



Adam Tas Corridor Energy

Mali Single-Fiber Bidirectional 10G





Overview

Our 10G BiDi SFP+ 80km transceiver provides ultra-long single-fiber reach using Tx1490nm/Rx1550nm wavelength technology. Delivering robust 23 dB link budget over 80km single-mode fiber, this 10G BiDi module enables carrier-grade long-haul applications. By using bidirectional (BiDi) wavelength division, these modules send and receive. The 10G BiDi SFP+ module will give you the ability to do just that, allowing you to have high-speed, bi-directional (sending and receiving) communication over a single strand of fiber sized for 10G. This article delves into the technical details, real-world applications, and selection criteria for BiDi SFP+ transceivers, guiding.



Mali Single-Fiber Bidirectional 10G

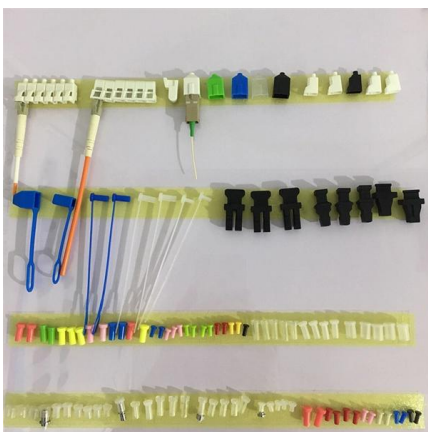


Everything You Need to Know About 10G Duplex XFP Optical

In the fast-paced world of networking, 10G Duplex XFP (10-Gigabit Small Form-factor Pluggable Extended) optical transceivers are critical components for enabling high-speed, long

SFP-10G-BXD1 (Single-Fiber-Bidirectional Module)

Single-fiber bidirectional (BiDi) optical modules must be used in pairs. For example, SFP-10G-BXD1 must be used with SFP-10G-BXU1. Translation Favorite Download Update Date:2019-05-16



SFP+ BiDi 10G Guide: Single Fiber 10G Optical Transceivers

Learn what SFP+ BiDi 10G is, how single-fiber 10G transceivers work, key specs, use cases, and how to choose the right BiDi module.

How Single Fiber Transceivers with BiDi SFP+ Save Fiber in Modern

Explore how single fiber transceivers like BiDi SFP+ save fiber infrastructure with bidirectional



optics in data centers and enterprise networks.



SFP-1100-WB SFP+ 10G BiDirectional Optical Module

The SFP-1100-WB is a BiDirectional single fiber strand 10G SFP+ optical module using Tx:1550nm and Rx:1490nm wavelengths and supporting links up to 100Km

The Ultimate Guide to SFP Modules (2026): Types,

Confused by SFP vs SFP+? Read the definitive 2026 guide on SFP modules. We explain Single Mode vs Multimode, DDM diagnostics, and how to choose the right



The Complete Guide to BiDi Transceiver

BiDi variants are also available in the XFP form factor for 10G. The 25G BiDi transceiver provides 25GBase-BX throughput up to 40km over single



SFP+ BiDi 10G Guide: Single Fiber 10G Optical Transceivers

SFP+ BiDi 10G is a proven and efficient solution for delivering 10-gigabit connectivity over a single strand of single-mode fiber. By using bidirectional wavelength transmission, it helps organizations



10G BiDi SFP+ Modules: A Guide to Single-Fiber 10G

This guide takes a deep dive into how the 10G BiDi SFP+ supports fiber savings, lessens complexity in deployment, and reduces costs to you and your customers.

SFP+ 10G BIDI Tx1330/Rx1270nm 60KM

This module utilizes bidirectional (BiDi) technology, allowing simultaneous transmission and reception of data on a single fiber, effectively doubling the capacity of existing fiber infrastructure.



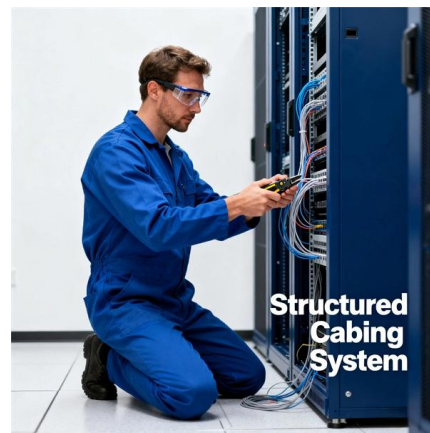
10G BiDi SFP+ 80km , Tx1490/Rx1550 , Single Fiber

Delivering robust 23 dB link budget over 80km single-mode fiber,



Ubiquiti 10Gbps Bidirectional Single-Mode Optical

The 10 Gbps Bidirectional Single-Mode Optical Module, model UACC-OM-SM-10G-S-2, manufactured by Ubiquiti, is an advanced optical transceiver designed for



Guide to 10G BiDi SFP+ Optical Transceivers Modules(2025)

Our 10G BiDi SFP+ Optical Transceivers Modules deliver full 10 Gb/s over a single strand of single-mode fiber, halving fiber count and simplifying cable management.



10G Bidirectional Single-Mode Optical Module

SFP+ transceiver that supports 10G connections up to 10 km using single-mode fiber with a simplex LC UPC connector.





SFP-10G-BXU1

Supports the single-fiber bidirectional function. Single-fiber bidirectional (BIDI) optical modules must be used in pairs. For example, SFP-10G-BXU1 must be used with SFP-10G-BXD1.

10G BiDi XFP 10km Side A , Single Fiber , EDGEOPTIC

10G BiDi XFP Side A: 1270/1330nm, 10km single fiber, 8dB budget. Cost-effective WDM solution, multi-rate 1.24-11.32 Gbps. Pair with Side B.



Integrated Aluminum Alloy Die Casting



Durable and Secure Metal Screws



Learn About 10G BiDi SFP+ Optical Transceivers , Carritech Optics

10G BiDi SFP+ optical transceivers are compact, hot-pluggable modules that enable bidirectional 10Gbps communication over a single strand of fiber. They achieve this by using two

What is 10G BIDI SFP+ Single-fiber Bidirectional ?

10G BIDI SFP+ optical module is packaged in SFP+, with a transmission rate of 10G, LC simplex interface, and a transmission distance of up to 80 kilometers when used with single-mode



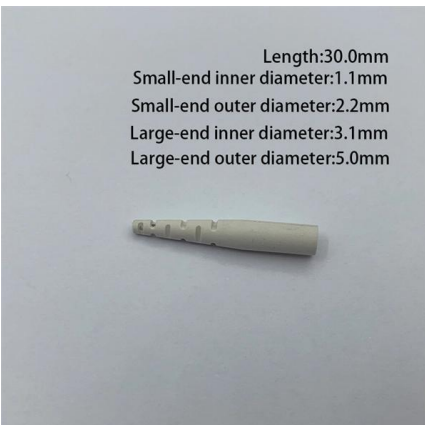
10G Bidirectional SFP+ Optical Transceiver

10G Bidirectional SFP+ Optical Transceiver Short Description: Product description Maximize your network efficiency with our high-performance 10G bidirectional



FS SFP-10G-BX: High-Performance Long-Distance

Boost your network with FS SFP-10G-BX: a reliable, low-power 10G BiDi SFP+ module supporting 10km single-fiber links and broad compatibility.



Comprehensive Guide to FS 10G BiDi SFP Modules

10G BiDi SFP+ modules utilize a unique optical mechanism that enables full-duplex data transmission over a single strand of single-mode fiber (SMF). This is achieved using two different



Custom 10G BiDi SFP+ MODULE, Tailored Simplex

esto postavljana pitanja Q1: Why must 10G BiDi modules always be purchased and deployed in pairs?A: BiDirectional (BiDi) modules utilize WDM technology to transmit and receive over a single



10G BiDi SFP+ 10km , Tx1330/Rx1270 , Single Fiber Compatible

Compatible 10G BiDi SFP+ for 10km single fiber. Tx1330/Rx1270nm, 6.2dB budget, 50% fiber savings. Works with 80+ brands.

Learn About 10G BiDi SFP+ Optical Transceivers , Carritech Optics

As the demand for high-speed and efficient data transmission grows, 10G BiDi SFP+ (Bidirectional Small Form-factor Pluggable Plus) optical transceivers have emerged as an innovative



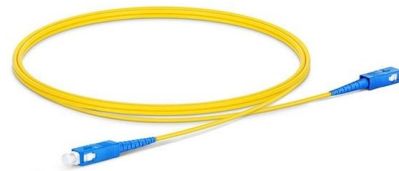
Custom 10G BiDi SFP+ MODULE, Tailored Simplex

?????? ??????? ?????????? Q1: Why must 10G BiDi modules always be purchased and deployed in pairs?A: BiDirectional (BiDi) modules utilize WDM technology to transmit and receive over a single



10G Bidi SFP+ Modules Selection Guide

Bidirectional (Bidi) optical modules are the ingenious solution, allowing data transmission and reception over a single fiber strand. This guide cuts



10G Bidi SFP+ Modules Selection Guide

Choose the right 10G Bidi SFP+ Modules by checking compatibility, distance, wavelength pairing, and reliability for optimal network performance.

10G Simplex Bidirectional SFP+ Module , Single Fiber WDM

The 10G SFP+ simplex bidirectional module delivers 12.5Gbps data rates over single mode SMF, reducing fiber infrastructure costs by 50% compared to duplex solutions.





Contact Us

For datasheets, pricing, or custom telecom energy solutions, please visit:
<https://www.koskolong.co.za>