



Adam Tas Corridor Energy

Mapping on the core switch





Mapping on the core switch

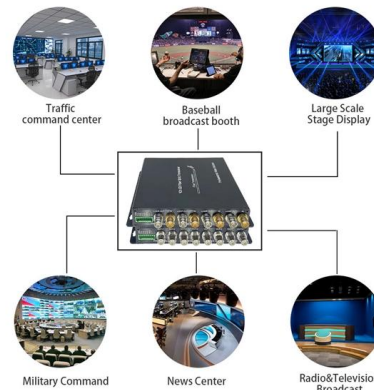


Patch Update 3.3.11

Naru (@Naruvt0). 401 likes 5 replies. Patch Update 3.3.11 - Fixed an issue in the fight with Reactor Husk where Resonator Hiyuki's Glacio Bite could not expose the enemy's Vulnerable Core. -

FS Community

Hier sollte eine Beschreibung angezeigt werden, diese Seite lässt dies jedoch nicht zu.



main.dvi

Abstract Future many-core processors are likely to concurrently execute a large number of diverse applications. How these applications are mapped to cores largely determines the interference

RPG Maker Forums

Hier sollte eine Beschreibung angezeigt werden, diese Seite lässt dies jedoch nicht zu.



Pre-Terminated Patch Panel

- Multi-application support
- Flexible configuration
- Modular design



Cable Gland Plug
28mm Cable Gland Plug



MPO LC up to 96 cores
MPO direct connection 48 ports



Mounting Bracket
Semi-open mounting holes

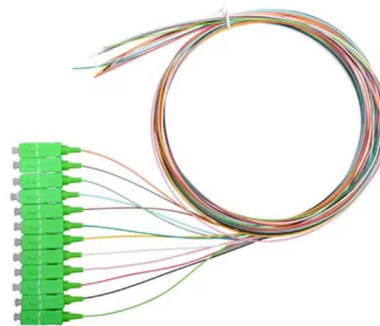


Understanding the Core Switch: Key Differences and Uses

Explore the core switch's role as the backbone of your network. Discover key differences, uses, and insights into layer 3 core switch technology.

Mapping techniques in multicore processors: current and

Multicore systems are in demand due to their high performance thus making application mapping an important research area in this field. Breaking an application into multiple parallel tasks



Many-to-many core-switch mapping in 2-D mesh NoC architectures

In this paper, we investigate the core-switch mapping (CSM) problem that optimally maps cores onto an NoC architecture such that either the energy consumption or the congestion is minimized.



A Power-Aware Mapping Approach to Map IP Cores

In this article, we investigate the Intellectual Property (IP) mapping problem that maps a given set of IP cores onto the tiles of a mesh-based Network



Most people think using Claude Code is about writing better prompts.

Most people think using Claude Code is about writing better prompts. It's not. The real unlock is structuring your repository so Claude can think like an engineer. If your repo is messy,

Many-to-Many Core-Switch Mapping in 2-D Mesh NoC Architectures

We propose a many-to-many core-switch mapping (mCSM) that allows a switch (core) to have multiple connections to its adjacent cores (switches). We also present decomposition methods



\$SILEX, the TSMC of the MEMS world, just IPO'd on Nasdaq

TSMC CoPoS enters small-volume trial production 2027, mass production 2028-2029. Samsung SEMCO glass core substrates targeting mass production 2027. Intel glass core substrates



An analytical model for thread-core mapping for tiled CMPs

We propose an MILP model to map application threads on available cores for optimising the power cost and latency. Our model supports near data processing (NDP) which is unique to our



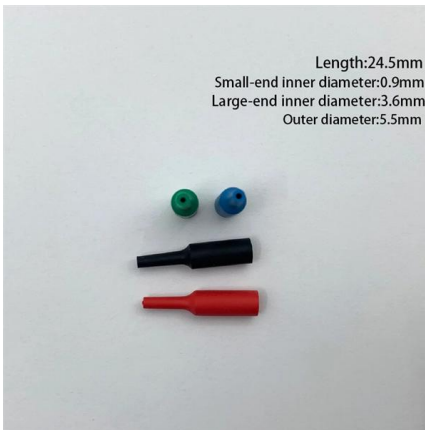
Configuring N Port Virtualization

Configure Persistent FC IDs on the core switch and use the Traffic Map feature to direct server interface traffic onto NP uplinks that all connect to the associated core switch.

Save 40% Off the Nintendo Switch 2 Compatible

The Nintendo Switch 2 Compatible Gamesir Super Nova Wireless Controller Is 40% Off Features Hall Effect joysticks and includes a charging dock.





KR100674933B1

A method of determining an optimized core-tile-switch mapping structure according to the present invention and a computer-readable recording medium recording the method may be used to

Understanding Core Switch: What It Is and How to

In the realm of system networking, three key types of switches are frequently mentioned: access switches, aggregation switches, and core switches.

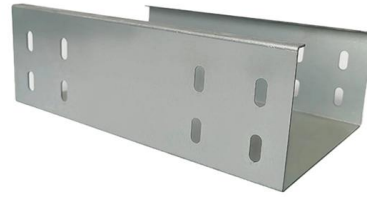


Mapping of Cores onto Network on Chip Architectures by

A new core mapping method is proposed in this paper, the method makes use of hierarchical genetic evolution strategy, which contains following two-level evolutions: high-level

Configure VLAN Mapping on a Switch

Article ID:5742 Configure VLAN Mapping on a Switch Introduction To establish Service Provider Virtual Local Area Networks (S-VLANs), you can configure VLAN mapping or VLAN ID



Sanity-check mappings for switch role · Issue #75 · w3c/core-aam

The switch role is mapped to toggle button in IA2 and ATK. This has apparently led to some problems. See [nvaccess/nvda#9187](#) (comment). Do we want to change the mappings?

Integrated core selection and mapping for mesh based Network-on

The cores present in a core library may perform more than one task and have non-uniform sizes. For this, a technique based on Particle Swarm Optimization (PSO) has been proposed to



Probability-based mapping approach for an application-aware

In this paper, we propose a unique mapping approach in which a probability-based core selection from the application benchmark into the center to eccentric way of placement of cores in



KR100674933B1

The optimization mapping method includes a calculation process of the first to third steps. A method of determining an optimized core-tile-switch mapping structure according to the present invention and a



Many-to-many core-switch mapping in 2-D mesh NoC architectures

Abstract In this paper, we investigate the core-switch mapping (CSM) problem that optimally maps cores onto an NoC architecture such that either the energy consumption or the



An Energy-Efficient Core Mapping Algorithm on Network on

An important phase in the NoC design with mesh based topologies requires core mapping for a given application. This paper proposes an energy efficient mapping algorithm (EMAP) that maps the cores



Retroarch controller mapping for individual cores

I changed it to H. Some cores, (Like Stella for Atari 2600) have lots of system buttons like difficulty switches which can only be mapped to player 1 in



Contact Us

For datasheets, pricing, or custom telecom energy solutions, please visit:
<https://www.koskolong.co.za>