



Adam Tas Corridor Energy

Maximum Spacing of Cable Trays





Maximum Spacing of Cable Trays

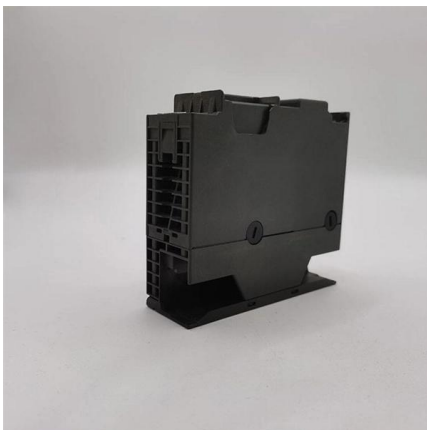
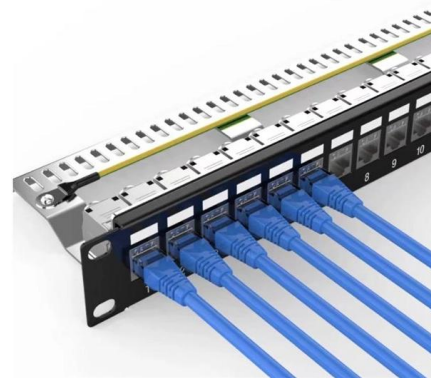


Cable Tray Support Spacing: Key Guidelines Explained

Explore the essential cable tray support spacing requirements for safe and efficient installations. Learn NEC guidelines for perforated, ladder, and wire

Cable Tray Width Selection for Installations with 600 Volt Single

Cable Tray Width Selection for Installations with 600 Volt Single Conductor Cables National Electrical Code (NEC) Section 318-11 Ampacities of Cables, Rated 2000 Volts or Less, in Cable Trays. (b)



Criteria for Sizing, Designing, Installing and Supporting of Cable-Tray

7.1 Cable tray system designs shall normally be aluminum ladder-type NEMA 20A tray with 225 mm (9 in) rung spacing with and outside flange. A 100mm (4 in) loading depth has been found to be a good

Cable Tray Width, Dimensions and Specifications as per

Learn about cable tray width dimensions and specifications as per NEC standards. Understand types, sizes, materials, and installation



Precautions for Cable Tray Installation

Cable Tray Installation Guide The correct installation of cable trays is crucial for establishing a reliable and efficient cable system. It ensures that cables are

910533-3_EN

Cable tray types, supports (types and spacing) and securing systems are selected and designed taking into consideration the weight of the cables including reserves, increased by a dynamic shock load of



Cable Tray Size Calculation for Project Engineers

Cable tray size calculation is important for ensuring safe cable installation, proper heat dissipation, and enough spare capacity for future



Cable Tray Dimensions and Specifications as per NEC

Many electrical systems employ cable trays. They route cables safely & efficiently. NEC defines minimum cable tray size & electrical installation



Cable Tray Sizing

Improved Scalability: Standard trays often have space for additional cables, allowing for future expansions without replacing the tray.
Interchangeability: Standardized sizes enable easy



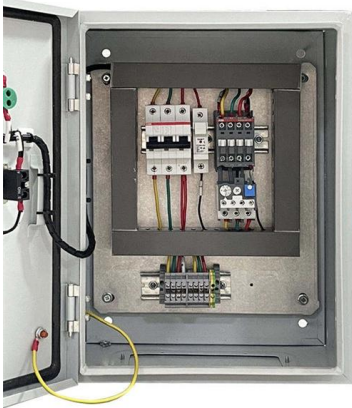
Cable Tray Spacing Standards for Installation and Safety

Discover the essential cable tray spacing requirements for safe and efficient installation. Learn key standards, horizontal and vertical spacing, and more.



Cable Tray Technical Guide A practical guide to product selection and

As per the NEC, the maximum allowable rung spacing is 9 inches (230 mm) when cable tray carries single-conductor cables of 1/0 to 4/0 AWG (American Wire Gauge) (Appendix I).



B-Line series Cable Tray Design Considerations

For ladder or ventilated trough trays, the total sum of the cross-sectional areas of all the cables to be installed in the cable tray must be equal to or less than the allowable cable area for the tray width, as



Pre-Terminated Patch Panel

- Multi-application support
- Flexible configuraton
- Modular design



Cable Gland Plug
28mm Cable Gland Plug



MPD-IC up to 96 cores
MPD direct connection 48 ports



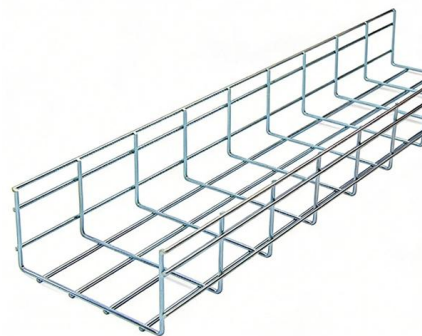
Mounting Bracket
Semi-open mounting holes

Cable Tray Size and Dimensions: How to Choose the

Learn how to calculate the perfect cable tray size and dimensions for your electrical project. This guide covers load capacity, fill ratios, and industry

Installation Of Cable In Cable Trays: NEC, Safety

Installation of Cable in Cable Trays ensures proper routing, cable management, NEC compliance, grounding, fire safety, and load capacity.





A Guide to Installing and Supporting Electrical Cable Trays

A professional guide to installing electrical cable tray systems per NEC Article 392. Covers support, securing cables, and fill calculations.

Cable Support Distances

This provides distances for cables based on their diameter and cable type. Prysmian was instrumental in providing this information and an extract is provided in this document.



Cable Tray

Of course, the exact specifications and definitions of DIN 4102 Part 12 of November 1998, such as rail height, tray widths, hole proportion, material thickness, max.

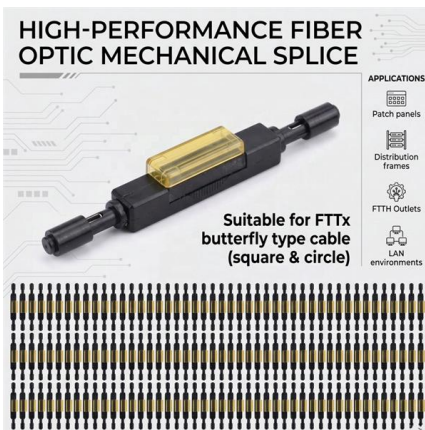
Guide to cable support systems

The mesh cable trays are suitable for the installation of power cables and cables in various areas of application. The grid spacings mean that cables can be inserted and run out in various directions.



Cable Tray SHIB NAL

All cable trays and their associated supports are rated for a specific maximum weight, based partly on the allowable fill area and the spacing of the cable tray supports.



Core Principles for Electrical and Instrumentation Cable

Spacing Standards: Electrical (power) and instrumentation (signal/control) cable trays should maintain a minimum vertical and horizontal distance. Industry



Cable Tray Systems: Requirements and Best Practices

Comprehensive guide to cable tray systems requirements: tray types, materials, loading, supports, bonding, routing, and best practices for safe electrical cable management.





Cable Tray Spacing Standards for Installation and Safety

Cable tray spacing is a critical aspect of electrical infrastructure, influencing both safety and efficiency. Whether you are working on power



CABLE TRAY

If the maximum ampere rating of the cable tray is not sufficient for the protective device to be used, the cable tray cannot be used as an EGC, and a separate EGC must be included in each cable or



Cable Tray Installation Rules (NEC 392) - Electrical Trader

Support spacing for cable trays must align with the manufacturer's instructions, as outlined in NEC 392.30 (A). Generally, standard trays require supports every 6 to 10 feet, while



Best Practice Guide to Cable Ladder and Cable Tray Systems

This guide covers cable ladder systems, cable tray systems, channel support systems and associated supports intended for the support and accommodation of cables and possibly other electrical



Cable Tray Type Selection

If cable trays are being installed where working space is a problem, hand access through the cable tray bottom may help to facilitate the installation of small diameter cables: control instrumentation, signal,

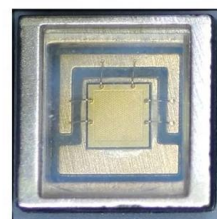


Cable Support Distances

Cable Support Distances Although BS 7671 touches on the subject of cable supports, it does not detail specifically what these support distances should be. Section 522.8 (Other Mechanical Stresses (A))

GUIDE CABLE TRAYS TECHNICAL

In accordance with its continuous improvement policy, Legrand reserves the right to change the specifications and illustrations without notice. All illustrations, descriptions and technical information





Contact Us

For datasheets, pricing, or custom telecom energy solutions, please visit:
<https://www.koskolong.co.za>