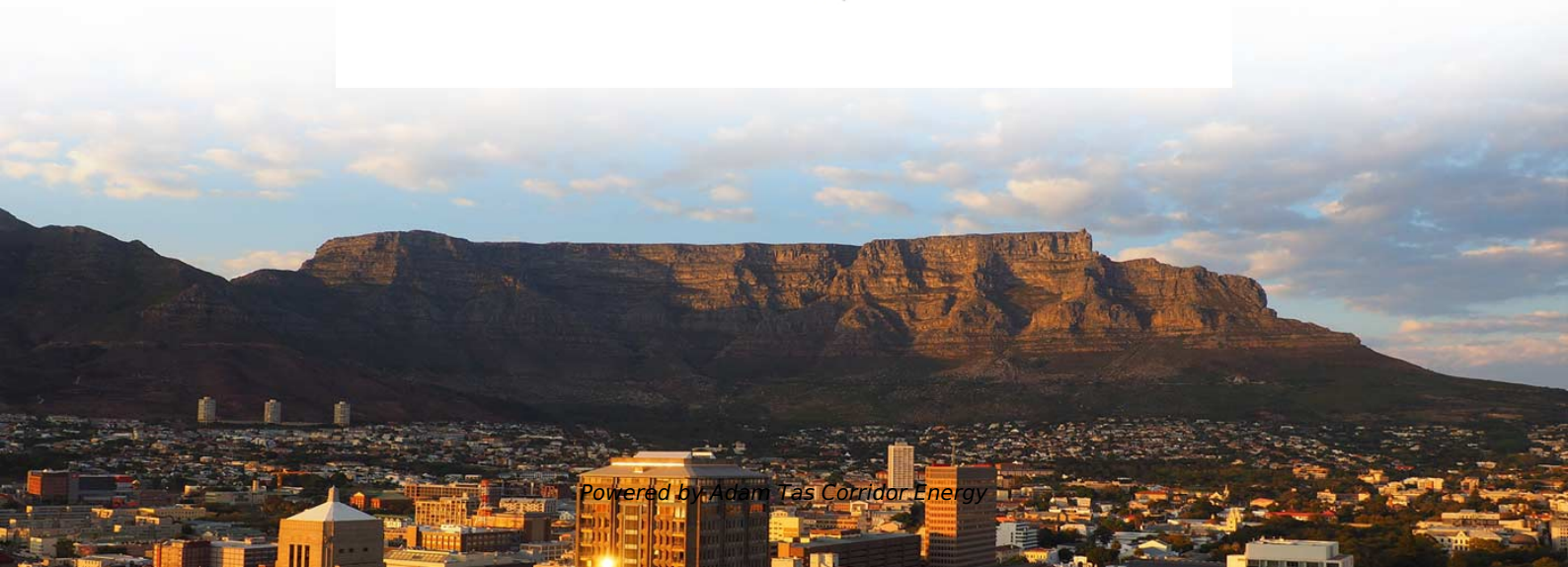
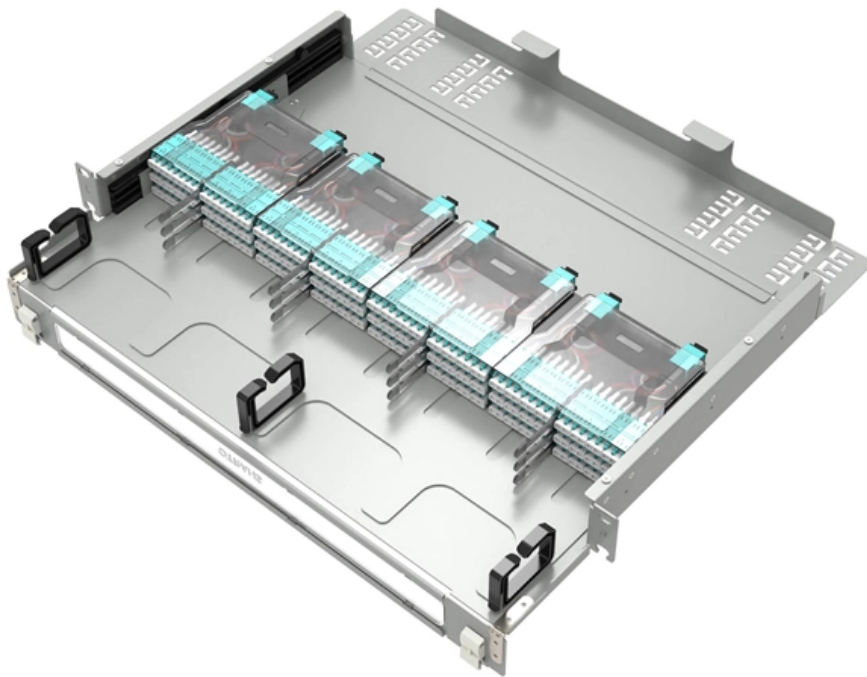




**Adam Tas Corridor Energy**

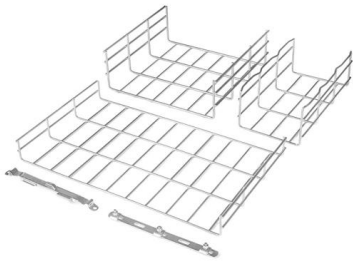
# **Measuring the current in a distribution box using a clamp meter**





## Measuring the current in a distribution box using a clamp meter

---



### How to Use a Clamp Meter for Electrical Measurements

Learn essential safety protocols and step-by-step techniques to precisely measure electrical current using a clamp meter.

### How to Properly Use a Clamp Meter on Live AC Circuits

Understanding Clamp Meters Clamp meters are invaluable tools for electricians and technicians dealing with live AC circuits. These devices allow you to measure current without having



### How To Measure Current With A Clamp Meter? Explained Simply

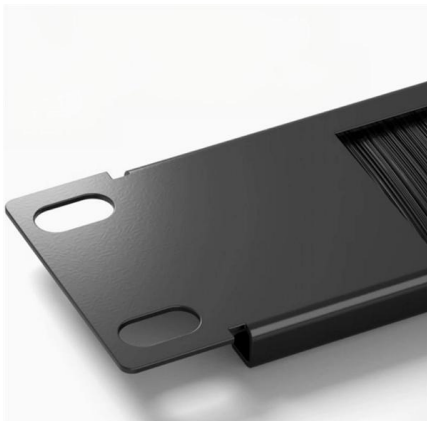
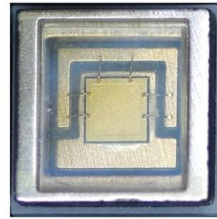
Solution: The clamp meter measures the net current, so clamping around multiple conductors will lead to inaccurate readings. Ensure you are only clamping around a single conductor.

### How To Use Clamp Meter To Measure Current?

HVAC System Performance: Technicians use clamp meters to measure compressor current,



fan motor current, and heating element current to diagnose system efficiency, identify faulty

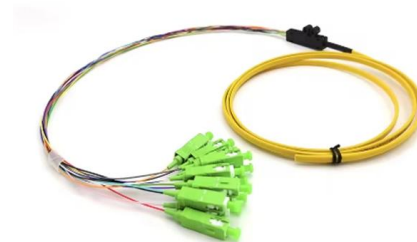


### **What is a clamp meter, and how does it measure current?**

This allows electricians to measure current safely and efficiently in high-power systems or crowded control panels. Principle of current measurement

### **Clamp Meter Working , How to Use a Clamp Meter to**

The article provides an overview of clamp meter usage, highlighting its function in measuring current through magnetic fields without circuit interruption.



### **Mastering The Clamp Meter: A Step-by-Step Guide**

The clamp meter is one of the most valuable tool for electricians, technicians, and DIYers alike when working with electrical systems. Their importance stems from



## Clamp meter functions and how to use them

Current measurement

- o Set the rotary switch as shown in "1".
- o Enable zero-adjustment as shown in "2".
- o Apply the clamp meter around the wire as shown in



## Clamp Meter FAQ: Everything You Need to Know , Fluke

Clamp meters are widely used in electrical maintenance, HVAC systems, industrial equipment monitoring, automotive diagnostics, and residential electrical work to

## How to Measure Current with a Clamp Meter

A clamp meter can measure a high value-current in a component without turning off the circuit power. The negative drawback of the tong tester meter is the



## How to Measure Current Using a Clamp Meter

Turn on the clamp meter and make sure it's set to measure current, denoted by the "A" (Amps) on the dial or display. Select AC or DC current based



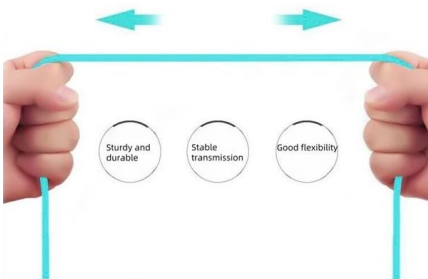
## Get the Job Done Right: A Quick Guide on How to Measure Current Using

What To Know This comprehensive guide will empower you with the knowledge and skills to use a clamp meter effectively, even if you're a beginner. " When you clamp the sensor



### More durable and robust

The outer layer is made of environmentally friendly PVC, which is soft and elastic. It can be stretched without damage, so you can use it with confidence.



## How to Measure Current , Using a Clamp Meter or

This video demonstrates how to measure current safely using a digital multimeter or a clamp meter.

## How to Measure Current with a Clamp Meter , Fluke

Steps for measuring ac or dc current using a clamp meter's jaws: Pre-measurement steps (to avoid electrical shock or personal injury): Disconnect test probes from the meter. Keep fingers behind





## How to Use a Clamp Meter: A Beginner's Guide

Learn how to use a clamp meter to measure current, voltage, and more. Step-by-step instructions for beginners, plus safety

## How to Measure Current , Using a Clamp Meter or Digital Multimeter

Accurate current measurement is essential for diagnosing electrical issues and verifying system performance. This video demonstrates how to measure current safely using a digital multimeter or a



## What Is a Clamp Meter And How To Use It?

Exploring clamp meter technology for measuring currents with confidence: Find out how a clamp meter works in our informative

## How To Use A Clamp Meter To Measure Current? A Simple Guide

Measuring current with a clamp meter is a straightforward process, but proper technique is essential for accurate and safe measurements. Step-by-Step Instructions Select the appropriate



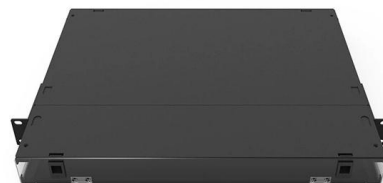
## Clamp Meter: Current Measurement Without Opening the Circuit

Learn how a clamp meter works in AC and DC systems, where it is used in practice, and what matters when selecting the right device for grid and industrial applications.



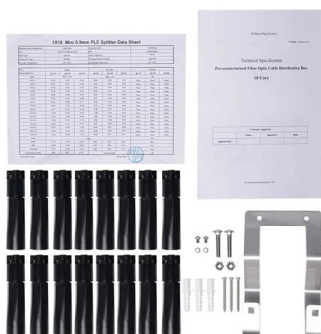
## How to Use Clamp Meters

Clamp meters are a convenient choice in such situations. This page offers a detailed explanation of how to use a clamp meter as well as related precautions. What is a



## How to Use a Clamp Meter: A Guide

A clamp meter is an essential tool for measuring electrical current safely and efficiently. Whether you're a professional electrician or a homeowner looking to





## How to Measure Current , Using a Clamp Meter or Digital Multimeter

This video demonstrates how to measure current safely using a digital multimeter or a clamp meter.



## How To Measure Current Using Clamp Meter?

Always use a clamp meter with a CAT rating equal to or higher than the category of the circuit you are measuring. For example, if you are working on a main distribution panel, a CAT III or

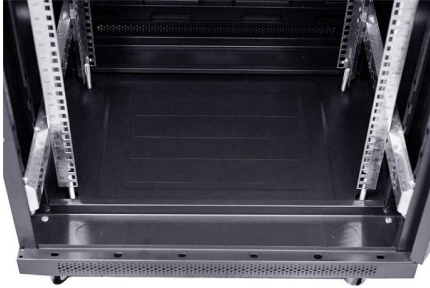
## How To Use a Clamp Meter

Explore how to use a clamp meter the right way. Learn to test AC and DC current safely and prepare for the field through hands-on electrical training.



## When You Must Use a Clamp Meter to Measure Current

This guide explains the scenarios that require a clamp meter, key safety precautions, and how to combine clamp meters with multimeters for professional diagnostics.



## How to Use Clamp Meters

First, if your clamp meter allows you to choose DC or AC current, choose the type of current that's appropriate for the circuit you wish to measure. Then set the



## How to Measure Current with a Clamp Accessory , Fluke

Follow the step-by-step guide on how to measure current with a multimeter and a clamp accessory, including a video with instructions on pairing the wireless Fluke



## How to Use a Clamp Meter

A clamp meter is a great tool to have when looking for a current value or amperage reading while working with electrical AC circuits. It's not magic, and





## Step-by-Step Guide to Using a Clamp Meter for Current Measurement

Learn the safe and effective way to measure AC current without breaking the circuit using a clamp meter. We cover the basics and best practices.

### When You Must Use a Clamp Meter to Measure Current

Learn when a clamp meter is essential for current measurement, why it's safer for live circuits, and what precautions professionals should take. Discover best



### Clamp meter diagram, working principle.

Clamp meter has a additional current measuring feature in comparison of other meters. A current transformer is installed as clamp type so it is called clamp meter.

## Contact Us

---

For datasheets, pricing, or custom telecom energy solutions, please visit:  
<https://www.koskolong.co.za>