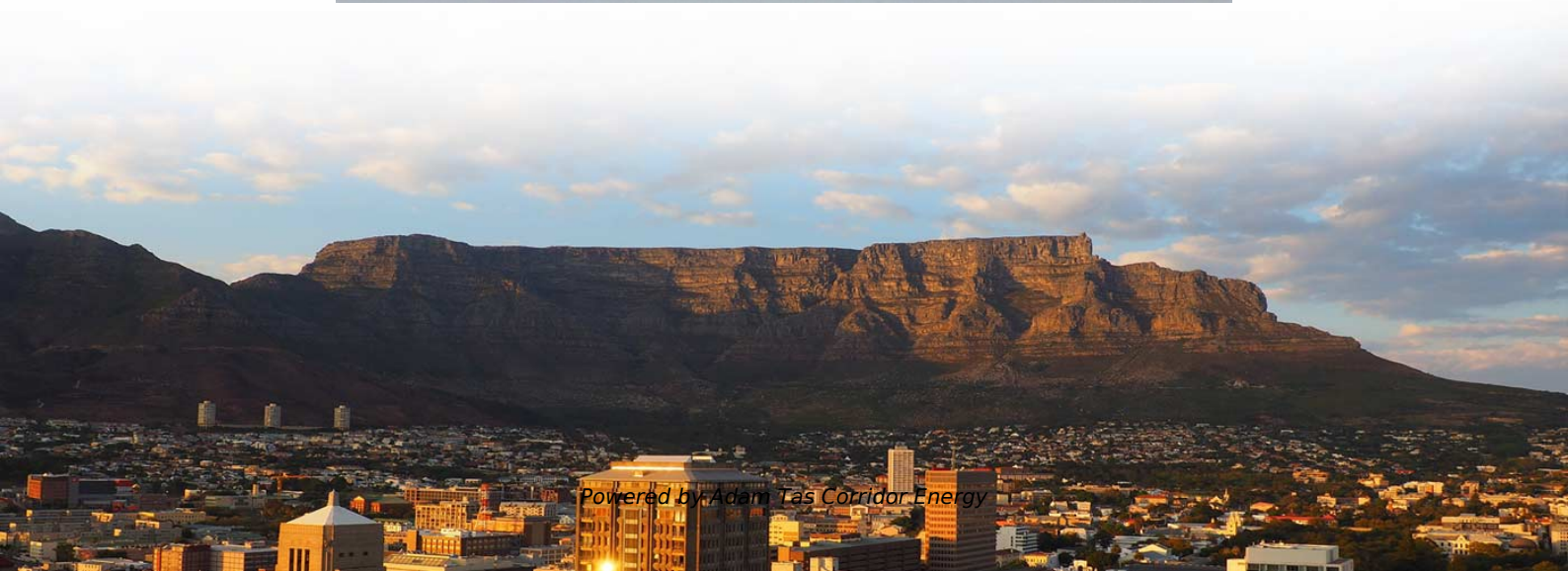




**Adam Tas Corridor Energy**

# **Method for replacing switches in a secondary distribution box**





## Overview

---

Radial operation is the most widespread and most economic design of both MV and LV networks. It provides a sufficiently high degree of reliability and service continuity for most customers.



## Method for replacing switches in a secondary distribution box

---

### How to Wire a Home Distribution Box



FDB (Final Distribution Board) directly connected through SDB (Sub Distribution Board) and the final switches are used to control the connected

### Secondary unit substations design guide

Secondary fault capability is increased by paralleled transformers and the feeder breakers must be selected accordingly. Primary switches are usually selector or duplex type so that



### How To Replace a Main Panel or Sub Panel

How To Replace a Main Panel or Sub Panel - Upgrading an Existing Electrical Service  
Benjamin Sahlstrom 478K subscribers Subscribed

### How to Change a Light Switch in 6 Easy Steps

The easiest way to replace an old light switch is to choose a new one of the same model. Before



purchasing a new switch, make sure it'll fit in the same



### **DIY Guide to Replacing Electrical Switches and Outlets**

It covers identifying different types of switches and outlets, basic electricity concepts, tools for replacing them and testing them after installation.

### **Electrical Panels: Replacement Signs, Maintenance,**

The electrical panel--also called a circuit breaker box or service panel--is the central distribution point that connects the primary outside wire to



### **Dual Power Switching Box Introduction: Principle**

This dual power switching box is composed of several elementary blocks that, when integrated, guarantee automatic power source switching. These



## Distribution Automation Handbook

Three different tapping switch implementation principles can be identified, namely plus-minus switching, linear switching and coarse-fine switching. Out of these three, the first one, plus-minus switching, is



Mesh door/glass door optional



Sp-601 glass door

Sp-602 mesh door

### How to Install a Subpanel Breaker Box in 3 Simple Steps

Also, they make switching the power off easier during an emergency in the detached locations without affecting the main panel. Installing a subpanel is

### Replacing Electrical Receptacles and Switches

An old switch can be replaced with the same type, or you can change a single-pole switch to a rheostat dimmer if it controls an approved light fixture. Older switches



### Primary and secondary power distribution systems

Primary distribution systems Primary distribution systems consist of feeders that deliver power from distribution substations to distribution



More products



## Ring Main Unit as an important part of Secondary

Ring Main Distribution Before getting into "What is RMU" question, let's say a word about the distribution system where RMU is often used. Distribution



## Electric Panel Installation Method Statement

METHOD STATEMENT FOR Electric panel and distribution box installation and termination - Free download as PDF File (.pdf), Text File (.txt) or

## How to Change a Light Switch in 6 Easy Steps

Selecting a Light Switch Replacement The easiest way to replace an old light switch is to choose a new one of the same model. Before purchasing a





## how to replace electrical switch box\_switchgear\_Switchboard\_circuit



- **\*\*Install the switch/socket\*\***: Align the wire terminals with the screw holes of the switch, tighten them to fix it, and ensure that the switch panel fits closely to the wall.

## Secondary unit substations design guide

Secondary unit substations requiring a primary disconnect are furnished with Eaton's Type MVS metal-enclosed load interrupter switchgear assemblies. Each assembly consists of one



## Distribution switchboards

Distribution switchboards, including the Main LV Switchboard (MLVS), are critical to the dependability of an electrical installation. They must comply with well-defined standards governing



## Three-Tier Power Distribution System in a Newly Constructed

Learn about the three-tier power distribution system (main secondary tertiary distribution boards) in a new residential area including their roles connections and safety measures for 0.4kV power supply.



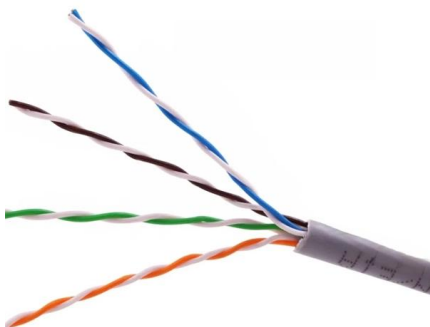
## A Guide to Wiring a Dual Switch Box

A double switch box, also known as a double gang box, is a device used in electrical wiring to house two separate switches in one unit. It provides a convenient way to



## Replacing an Electrical Power Distribution Panelboard?

Electrical Power Distribution Panelboards come in different sizes, and you'll hear "enclosure", "box" or "can" used interchangeably to describe the metal housing.



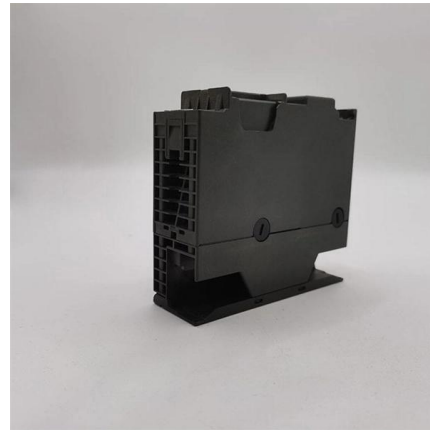
## electrical

I would like to move 8 x 20A circuits (room lights, ceiling fans, outlets in the bedrooms, and living room), and 1 x 50A (AC) circuit from left main panel to



## A Step-by-Step Guide to Wiring an Electrical Panel Box

Find out how to properly wire an electrical panel box with a comprehensive diagram and step-by-step instructions.



## How to Replace Electrical Receptacles and Switches

2008 NEC on No Ground Wire in Switch Box  
404.9 (B) Exception. " Where no means exists within the snap switch enclosure for connecting to the equipment

## Method Statement for Installation & Testing of Electrical

Install the empty Panel Box at its position and fix it with nuts and bolts at their place properly. Install switchgear panel with its accessories inside the box as per the



## System Arrangements

Typical equipment for this system arrangement is a single unit substation consisting of a fused primary switch, a transformer of sufficient size to supply the loads, and a low-voltage switchboard. This



## How to Add a Second Breaker Box (Subpanel)

By installing a subpanel, you prevent the need for excessive long runs of individual branch circuit wiring back to the main service location. Selecting the placement for the subpanel



## Contact Us

---

For datasheets, pricing, or custom telecom energy solutions, please visit:  
<https://www.koskolong.co.za>