



**Adam Tas Corridor Energy**

# **Method for welding the back support of cable trays**





## Method for welding the back support of cable trays

---

### Guide to cable support systems

Support systems for cable support structures are used to bridge large loads and support spacings and to create complex section routes. The systems allow large support spacings of wide span systems



### Best Practice Guide to Cable Ladder and Cable Tray Systems

Introduction This publication is intended as a practical guide for the proper and safe\* installation of cable ladder systems, cable tray systems, channel support systems and associated supports.



### CABLE TRAYS GENERAL INFORMATION AND

Cable tray systems are to be installed so they are accessible. If possible 300mm minimum should be left above or between installed systems to allow for cable

### Cable Tray Support Weld Design Analysis , PDF

The document discusses the weld design for connections of different sized cable trays. It



provides maximum and minimum force calculations for beams of various



### Technical Specification for Cable tray installation and cable laying work

1. Scope :- This specification covers the following major activities; - Fabrication and installation of Mild Steel (MS) support structure for Galvanized Iron (GI) Cable tray. - Installation of perforated GI Cable

### Installations of Cable Trays Method Statement - Your

Cable trays are easy to install, and since they come in different sizes, you can choose the right tray for your individual needs. But to install them properly on-site,



### Cable Tray Support Solutions: Safety, Compliance,

Cable trays are an integral part of modern industrial infrastructure and civil architecture. With the rapid development of electrification and informatization,





## Cable tray support and its welding method , Semantic Scholar

According to an embodiment of the present invention, a method to weld a cable tray support, which is capable of improving convenience of welding by forming a bonding surface on the lower part,

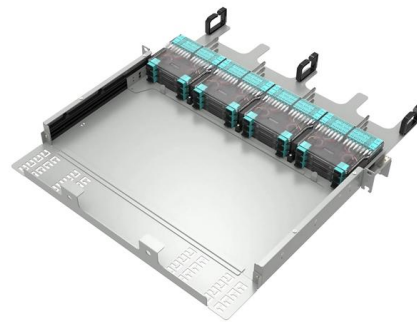


## A Guide to Installing and Supporting Electrical Cable Trays

A professional guide to installing electrical cable tray systems per NEC Article 392. Covers support, securing cables, and fill calculations.

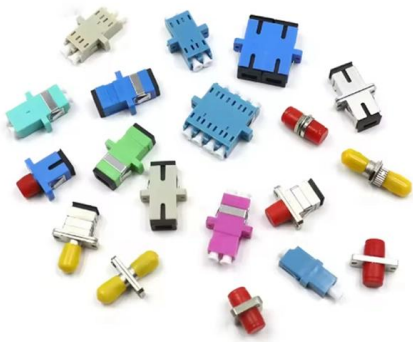
## CABLE TRAY AND ELECTRICAL EQUIPMENT

Self standing support for cable tray shall be made of steel channel vertically nstalled and supported with concrete foundation, anchor bolt grouting, etc. Welding of



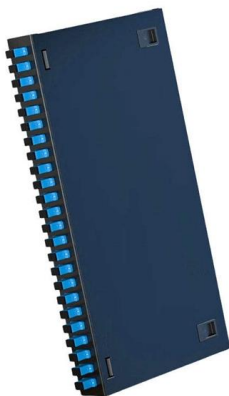
## Cable Tray Installation Method Statement

The document provides guidelines for installing cable trays and accessories. It outlines 15 steps for the installation process including preparing cable tray



### **Cable Tray Manual Lifting Method Statement , PDF**

This document provides a method statement for manual lifting and installation of cable trays for the GNPower Mariveles Energy Center Ltd. Co. project. It outlines



### **Cable Tray Technical Guide A practical guide to product selection and**

SOLID-BOTTOM CABLE TRAY Providing additional cable protection, solid-bottom cable tray is sometimes preferred to support and protect numerous small instrumentation and control cables.

### **Microsoft Word**

Cable tray should be stored away from well travelled corridors. Stack loosely on adequate support to prevent contact with moisture and the ground. For straight lengths; supports should be placed no





## Mastering Cable Tray Welding: Tips for Seamless Installations

Cable tray welding is essential for ensuring the structural stability of cable tray systems in industrial and commercial wiring setups. This process involves joining metal components to create a robust support

## Cable Tray Installation and Cable Handling Method

3. Cable Tray Support Locations Cable tray supports should be strategically positioned so that connectors between horizontal straight sections of the tray fall

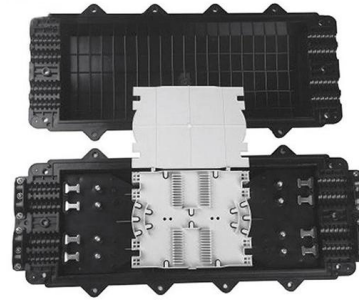


## Guide to cable support systems

The load capacity of the cable trays according to the support width can be read off in the diagram using load curves - here, shown as an example for a cable tray with the tray widths 100 to 600 mm.

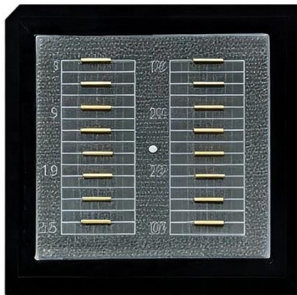
## GUIDE CABLE TRAYS TECHNICAL

When performing operations that involve access to the inside of the enclosure, be aware of the risk of burns before touching any products or metal parts. Before turning the power back on, make sure that



## Connecting Cable Trays: Your Guide to Secure and

Learn common methods for connecting cable trays safely and efficiently. Our guide covers splice plates, quick-connects, and key tips for secure



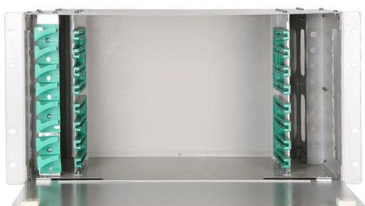
## Best Fixing and Mounting Options for Cable Trays , CMW

Regarding cable management, the fixing and mounting you choose for your cable trays can make or break your setup. Whether you're managing voice, data, or electrical cables, ensuring



## Cable Tray Fabrication Method Statement

The document outlines procedures for cable tray fabrication and installation for the HA MBD project. It includes sections on scope of work, reference documents,





## Cable Tray Technical Guide A practical guide to product selection and

The choice of method should be discussed with a local inspector. The best decision may be to extend only the cables, creating a discontinuity in the cable tray.



## Cable Tray Installation

Ladder trays offer airflow and easy cable entry, while perforated cable trays support lighter loads. Match the tray type to your cable installation method and environment.

## Decoding Cable Tray Support Structures: Tips and Insights

Discover efficient cable tray support structures for optimal cable management. Learn about hanger, wall-mounted, and Unistrut systems for safer



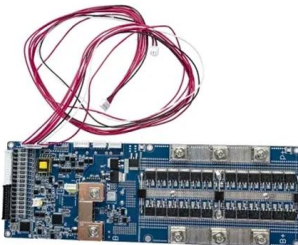
## Cable Tray Systems: Requirements and Best Practices

Comprehensive guide to cable tray systems requirements: tray types, materials, loading, supports, bonding, routing, and best practices for safe electrical cable management.



## Cable Tray Erection Method Statement , PDF , Welding

7.2 Procedure for Cable tray installation. 7.2.1 Ensure cable tray size, type, spacing between tiers and routing as per drawing during installation. 7.2.2 Cable tray



## Best Practice Guide to Cable Ladder and Cable Tray Systems

This guide covers cable ladder systems, cable tray systems, channel support systems and associated supports intended for the support and accommodation of cables and possibly other electrical

## Contact Us

---

For datasheets, pricing, or custom telecom energy solutions, please visit:  
<https://www.koskolong.co.za>