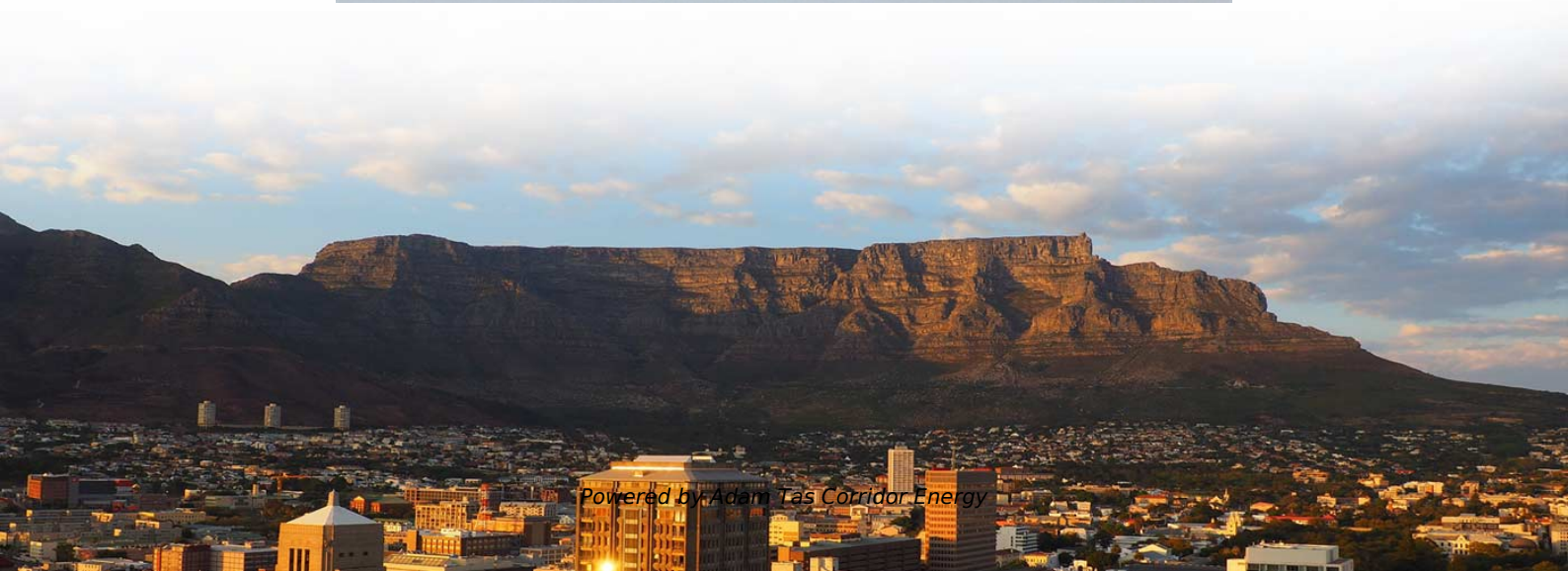




Adam Tas Corridor Energy

Micropores in the cold aisle of the computer room





Overview

The hot and cold aisles in the data center are part of an energy-efficient layout for server racks and other computing equipment.



Micropores in the cold aisle of the computer room



Hot and Cold Aisle Containment Systems: How They

Hot aisle containment (HAC) and cold aisle containment (CAC) are the most efficient ways of preventing your servers from overheating and these

Optimizing Data Center Cooling for Energy Efficiency

Disadvantages of Cold Aisle Containment Hotter Overall Room Temperature: The data center space outside the contained aisles becomes the



Cold Aisle Containment in Data Centers , Subzero

With cooling provided through a raised floor, this cold aisle containment project uses rigid wall panels in conjunction with the Polar Cap 2 roof system to provide

Data Centre Cooling: Hot Aisle and Cold Aisle Design

Data Centre Cooling: Hot Aisle and Cold Aisle Design Data centres have become an integral



part of today's technological landscape, used to store, process and



Data Center Curtains , Hot & Cold Aisle Containment

Data Centers and Equipment Rooms Anti-Static Data Center Containment Curtains, Doors, and Partitions - The Ideal Solution for Data Centers Data center managers



Data Center Aisle Containment

Traditional open aisle data centers use perimeter PAC (precision air conditioning) or CRAC (computer room air conditioning) units to channel cold air up through a



Cold and hot aisle construction in computer room

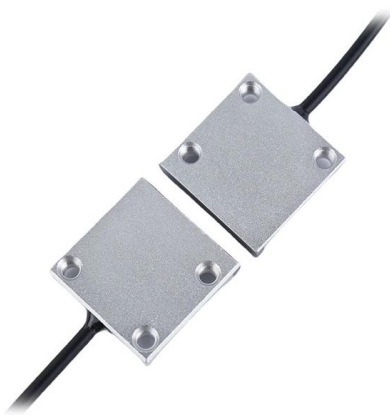
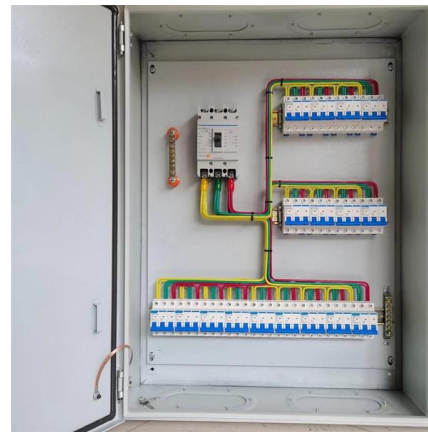
In this way, the upper and lower temperature gradients of the cold aisle can be reduced, and the air outlet temperature of the air conditioner can be appropriately





Data Center Containment 101

The cold aisle containment system separates the cold supply and hot exhaust air from each other, often with simple modifications to the room. The down side is that employees must work in the open warm



Data Center HVAC Systems

Learn how Data Center HVAC Systems work using cold and hot aisle strategies and air cooled versus liquid cooled IT equipment racks.

What is a Hot/Cold Aisle in CRAC?

Computer Room Air Conditioning: Chapter 2 Hot and Cold Aisles In this module, we will look into hot and cold aisles in computer room air



The Data Center Hot/Cold Aisle Containment Debate

Another issue is the fact that in cold aisle containment the server room will be kept at a high temperature, as opposed to just hot aisles with hot aisle containment, and will adversely affect



FOCUSED COOLING USING COLD AISLE CONTAINMENT

Cold aisle containment can be used with or without conventional raised floor cooling. It is easily retrofitted into existing raised floor data centers and works in tandem with the raised floor as well as



How to Keep Your Server Room Cool

Organization One solution is to arrange racks in a hot aisle/cold aisle configuration, involving positioning server racks in alternating rows, with cold air

Diagram of cold aisle containment in the computer room.

Download scientific diagram , Diagram of cold aisle containment in the computer room. from publication: Cooling Technologies for Internet Data Center in China:



Move to a Hot Aisle/Cold Aisle Layout

A Time-tested Technique The hot aisle /cold aisle data center layout was originated by IBM in 1992 and it is one of the oldest ways to save energy in the data center.



Numerical and experimental study of air containment systems in

In this study, both numerical and experimental studies were conducted to investigate the thermal performance of two systems. We found that there are operational differences that are



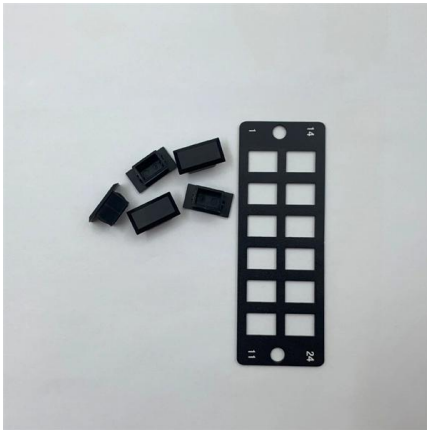
Data Center Containment: Types, Benefits & Challenges

Hot or cold aisle containment has grown in popularity. This article will elaborate on what data center containment is, common types of it, and their

FOCUSED COOLING USING COLD AISLE CONTAINMENT

While either hot aisle or cold aisle containment systems can be installed and are both capable of increasing efficiency and cooling today's high heat data centers, meaningful differences exist in how



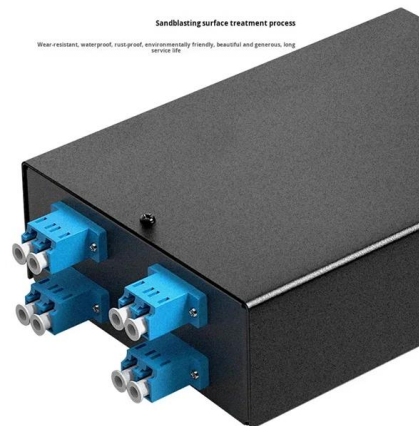


Data Center Containment: Types, Benefits & Challenges

Then observe the unique layout and architecture of each computer room to discover conditions that make hot aisle or cold aisle containment

General guidelines for data centers

Perforated tiles should be placed exclusively in the cold aisles, aligned with the intakes of the equipment. No perforated tiles should be placed in the hot aisles, no matter how uncomfortably hot.



Contact Us

For datasheets, pricing, or custom telecom energy solutions, please visit:
<https://www.koskolong.co.za>