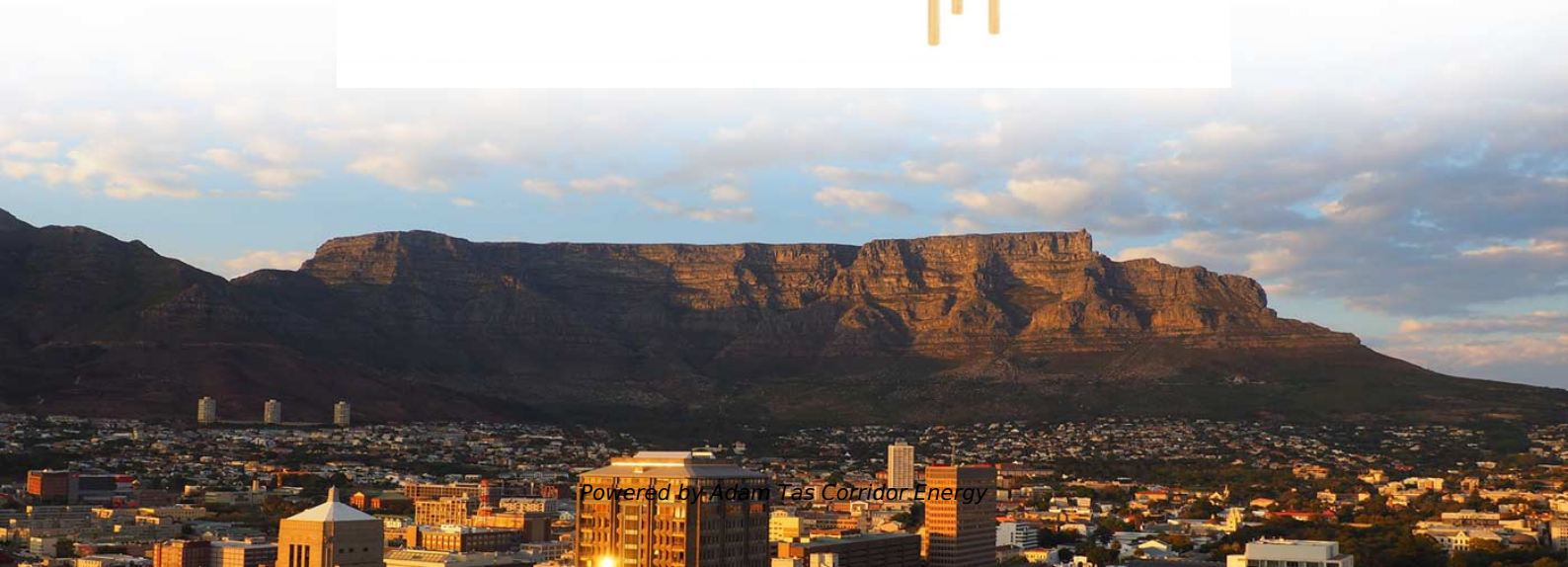
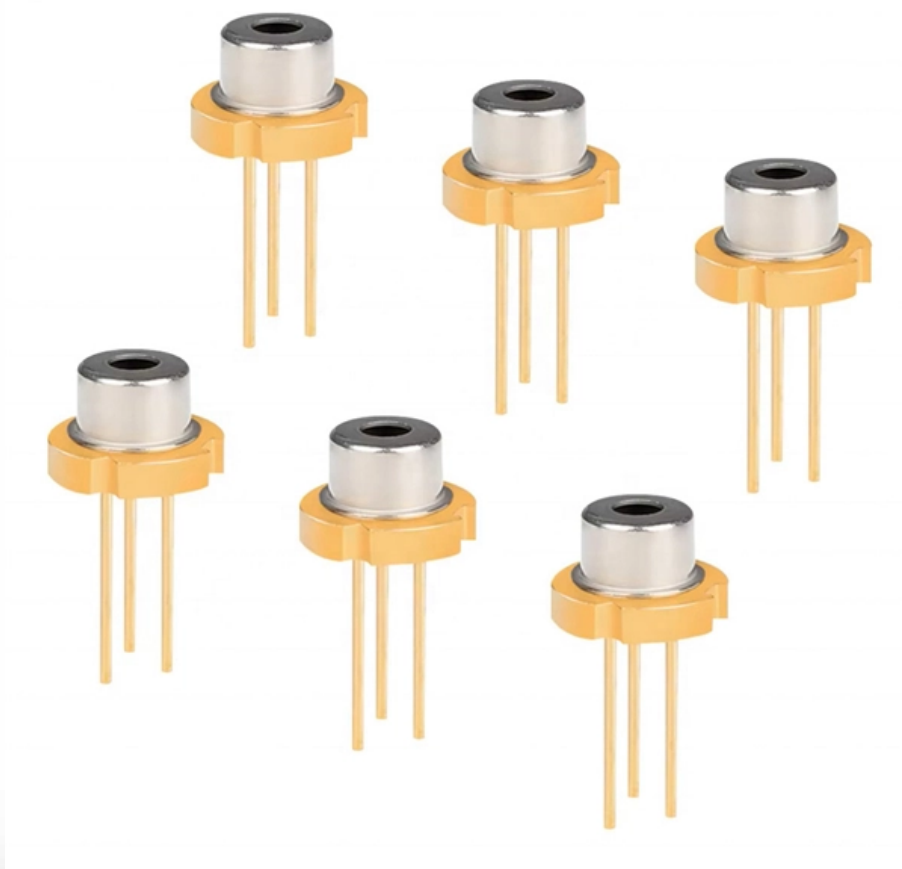




Adam Tas Corridor Energy

Model of the primary power distribution box on the construction site





Model of the primary power distribution box on the construction site



The Essential Guide to Understanding Electrical

Primary Power Source: The primary power source of an electrical distribution system is typically a utility grid, a generator, or a combination of both. It supplies the high

Construction of Transmission and Distribution Lines

Construction of overhead power lines, especially in wilderness areas, may have significant environmental effects. Environmental studies for such projects may consider the effect of brush



Basics of power system design

The function of the electric power distribution system in a building or an installation site is to receive power at one or more supply points and to deliver it to the lighting loads, motors and all other

ENERGYBOX Assemblies for Construction Sites (ACS)

ENERGYBOX is a complete range of Assemblies



for Construction Sites (ACS) pre-wired boards that can be wall-mounted or installed on a support. The panels are



Electric power distribution

Primary distribution lines carry this medium voltage power to distribution transformers located near the customer's premises. Distribution transformers again lower the

Primary and secondary power distribution systems

Primary distribution systems Primary distribution systems consist of feeders that deliver power from distribution substations to distribution



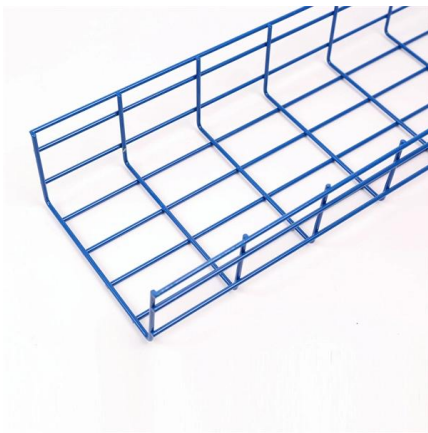
Stock Markets, Business News, Financials, Earnings

CNBC is the world leader in business news and real-time financial market coverage. Find fast, actionable information.



The Meaning and Function of Primary, Secondary, and Tertiary

This structure ensures effective power management, safety, and reliability in complex electrical systems, particularly on construction sites or large-scale projects.



Nagaland News, India News, Northeast News

The Morung Express brings the Latest News, Top Breaking headlines on Politics and Current Affairs in Nagaland India and around the World, Naglaand News, Naga

The primary model for power distribution system in box

Based on the field-bus technology and combined with the industrial control products, the intelligent power distribution system in box-type substation was investigated.



Ars Technica

News and reviews, covering IT, AI, science, space, health, gaming, cybersecurity, tech policy, computers, mobile devices, and operating systems.



Planning of Electric Power Distribution

To this end, we are launching a new series, whereby volume 2 will consist of several individual modules. This newly designed first volume, "Planning of Electric Power Distribution - Technical Principles",



What are the primary, secondary and tertiary distribution boxes?

Primary distribution box: three-phase power supply, ground wire and zero wire are introduced from the transformer. Secondary distribution box: from the power line of primary distribution box to temporary

Primary and secondary power distribution systems (layouts explained)

This demand of safety power supply (SPS) is divided between the emergency standby power system (ESPS) and the uninterruptible power supply (UPS). When the NPS fails, the UPS shall be supplied





Electric Power Distribution System Basics , Electrical A2Z

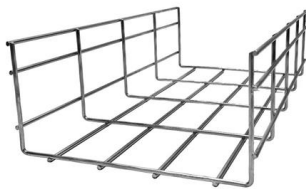
The article provides an overview of electric power distribution systems, focusing on one-line diagrams, busways, and grounding. It explains how

Primary and secondary power distribution systems (layouts explained)

PDF file

Planning of Electric Power Distribution - Siemens

This demand of safety power supply (SPS) is divided between the emergency standby power system (ESPS) and the uninterruptible power supply (UPS). When the NPS fails, the UPS shall be supplied



Power supply on the construction site

A site power distribution board is usually an electrical distribution box equipped with various sockets to provide power for different equipment and machinery. A construction power distribution box may also

Electric Power Distribution Systems

Summary This chapter provides an overview of electrical distribution network and systems. The primary substation is the load center taking



power from the transmission or subtransmission network and



Power Distribution Systems

This section delves into the major components of AC power distribution systems, including distribution lines, distribution transformers, circuit breakers and



Introduction to Power Distribution Systems

Overview of electricity infrastructure and role of electric power distribution At a distribution substation, a substation transformer takes the incoming transmission-level voltage (35 to 230 kV) and steps it



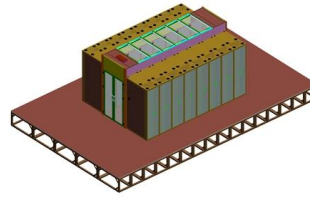
Power Distribution Equipment

Mini Power-Zone: Mini Power-Zone combines a transformer and circuit breaker distribution panel into a single wall mounted substation. The substation includes a primary main circuit breaker, sealed step



SECTION 9: ELECTRICAL POWER DISTRIBUTION

Voltage stepped down at bulk-power substations
Typically 69 kV, but also 115 kV and 138 kV
Large industrial customers may connect directly to the subtransmission network
Voltage stepped down at



Understanding Primary Electric in Construction: A Comprehensive Guide

Primary electric refers to the initial stage of electrical distribution in a construction project. It involves the high-voltage power delivered from the utility provider to the building's electrical system.

Primary and Secondary Distribution Systems

The document also describes the primary distribution system between the substation and distribution transformers, including primary feeders, laterals, and the factors



POWER DISTRIBUTION FUNDAMENTALS CHAPTER 1: DISTRIBUTION

Course Description This course is an introduction to the basic principles, major equipment, protection and control systems relating to high-voltage power distribution and transmission. In this course, you



The Meaning and Function of Primary, Secondary, and Tertiary

Secondary Distribution Box: Used in construction or other project sites, supplying power to specific zones such as buildings or floors. Part of a three-tier protection system, ensuring power safety at



Contact Us

For datasheets, pricing, or custom telecom energy solutions, please visit:
<https://www.koskolong.co.za>