



Adam Tas Corridor Energy

Mongolian 100g Single-Mode Optical Module



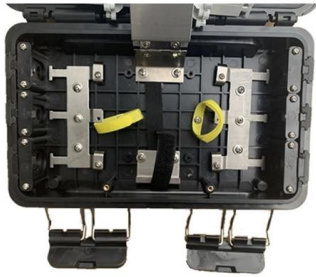


Overview

The QSFP-10002-FR1 is a single lambda short reach single-mode 100G QSFP28 optical module transceiver compatible with the 100GBase-FR1 specifications. The common 100G optical standards, such as 100G SR4, 100G LR4, 100G CWDM4, 100G PSM4, and 100G ER4 optical modules, utilize four 25G optical channels for either parallel transmission or WDM transmission. The module incorporate one channel optical signal and operates on 1304nm and 1309nm wavelength. Optical modules are optoelectronic devices that perform photoelectric and electro-optic conversions.



Mongolian 100g Single-Mode Optical Module



100G QSFP28 Single Wavelength

A QSFP28 100G single-wavelength module delivers 100 Gbps over one optical lambda using PAM4 modulation, instead of spreading traffic across 4 wavelengths like CWDM4/LR4. This

QSFP28 Optical Transceiver Modules for Sale (100G) , Cables on

QSFP28 Optical Transceiver Modules (100G-SR/LR) Buy 100G QSFP28 Optical Transceiver Modules by Amphenol XGIGA Factory-Direct at Cables on Demand in 100GBASE-SR4 (Short-Range)



Exploring 100G Single Mode QSFP28 Transceiver Types

Explore 100G single mode QSFP28 module types by distance, cost, and use case to select the best fit for data center, metro, or long-haul networks.

100G QSFP28 Single Fiber (BiDi) Modules: Technology, Benefits

Single fiber QSFP28 modules (commonly called BiDi transceivers) enable full-duplex 100G



communication over a single optical strand. They do this by using Wavelength Division



100G Optical Transceiver

Explore the details, specifications and video of our 100G Optical Transceiver, and order high-quality 100G Optical Transceiver from our factory directly at

100Gb/s QSFP28 IR4 Parallel Single Mode

This product is a QSFP28 parallel single mode optical transceiver with an MTP/MPO fiber ribbon connector. The transmitter module accepts electrical input signals compatible with Common Mode



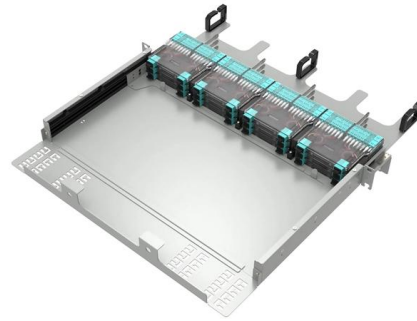
Single Lambda 100G QSFP28 Modules Overview

Explore the features and applications of Single Lambda 100G QSFP28 modules and learn how these modules enhance high-speed data transmission in various



QSFP28-100G-LR1 Optical Transceiver Single-Mode

Explore the QSFP-10010-LR1 a 100G LR1 single-mode transceiver for 10Km. Cisco compatible - buy now for high-speed networking!

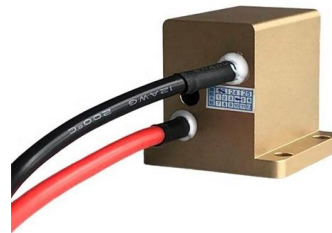


Optical Converter Module 100Gbps 100G-10KM-OLT

The 100G-10KM-OLT-QSFP28 Converter Module is designed to operate in high-performance networks, supporting transfer rates of 100 Gbps using a single-mode

1G SFP Modules: A Deep Dive into Specs & Types

Learn how to choose and optimize 1G SFP modules. Compare specs, fiber vs copper types, troubleshooting tips, and best practices for reliable networks.



100G QSFP28 Single Fiber (BiDi) Modules: Technology, Benefits

Understand 100G QSFP28 single fiber (BiDi) modules--how they work, benefits vs. duplex 100G, deployment considerations, and recommended LINK-PP solutions. Practical guide for



QSFP28-100G-LR4: QSFP+ 100G LR4 Optical

Explore the QSFP-10010-LR4 a 100G LR4 single-mode transceiver with CWDM for 10Km extension. Cisco compatible with aggregate channels - shop now for high

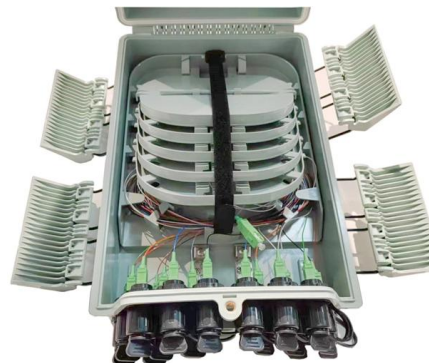


Complete Guide to Choosing the Right 100M Optical

Selecting the wrong module can lead to network failures, unnecessary costs, and hours of troubleshooting. This guide will demystify the key selection

100G Single-Fiber Optical Module: New Choice for High-Bandwidth

100G single-fiber optical modules, with their core advantage of enabling bidirectional transmission over a single fiber, are becoming a key device for conserving fiber resources and





UniFi 100G LR4 Single-Mode Optical Module

QSFP28 transceiver that supports 100G connections up to 10 km using single-mode fiber with a duplex LC UPC connector.

The Knowledge 100G Optical Transceivers You Should

How should the correct 100G optical transceiver module be selected? This blog will introduce 100G optical transceiver related knowledge, hope to help



A Deep Dive into the QSFP28-100G-ZR4 Optical

QSFP28-100G-ZR4 transceiver enables 100G data transmission up to 80km using single-mode fiber, ideal for long-distance, high-speed network

What Is A 100G Single Lambda Optical Transceiver?

This article will introduce the 100G single lambda optical module, which can provide an excellent cost-effective solution for Ethernet and a





Understanding 100G Single Fiber QSFP28 Module for

100G single fiber QSFP28 modules enable fast, cost-effective network upgrades using one fiber strand, ideal for scalable modern data centers.



1pc 100Gb QSFP28 Singlemode Module 100GBASE-LR4 1310nm

1pc 100Gb QSFP28 Singlemode Module 100GBASE-LR4 1310nm 10km DOM Duplex LC SMF Optical Transceiver Compatible with Arista/Brocade/Dell SFP-100G-LR4 ect.

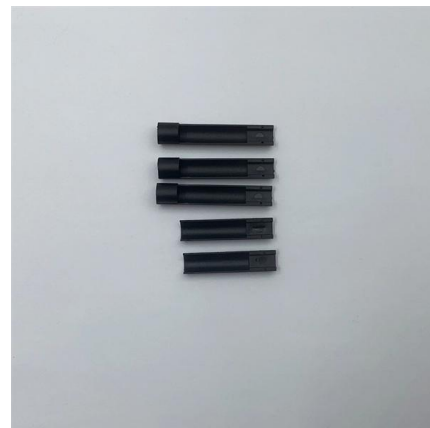


100G LR4 Single-Mode Optical Module

QSFP28 transceiver that supports 100G connections up to 10 km using single-mode fiber with a duplex LC UPC connector.

QSFP28-100G-FR1 100G Single Lambda Transceiver 2Km

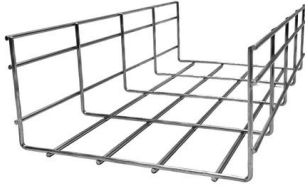
The QSFP-10002-FR1 is a single lambda short reach single-mode 100G QSFP28 optical module transceiver compatible with the 100GBase-FR1 specifications. It





QSFP28-100G-DR1 Optical Transceiver Single-Mode

Explore the QSFP-10000-DR1 a 100G DR1 single-mode transceiver for 500m. Cisco compatible - buy now for high-speed networking!



10 Types of 100G QSFP28 Single Lambda Modules

The 100G single lambda optical module can be used as an alternative or supplement to 100G long-distance transmission, which is more cost

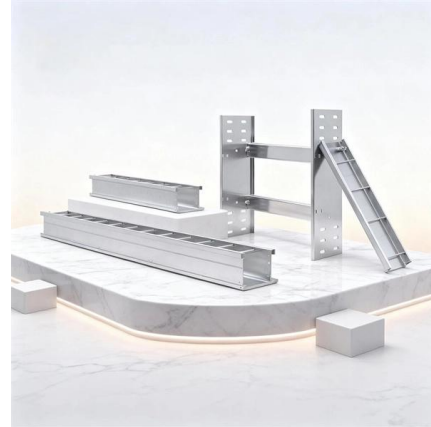


Huawei QSFP28-100G-LR4 Optical Module Datasheet

The transmitting end of an optical module converts electrical signals into optical signals, while the receiving end converts optical signals back into electrical signals. Optical modules are classified by

QSFP28 100G BIDI ER1 Single Lambda 40km Module

Ascent Optics' QSP-100B194-40CL BIDI QSFP28 ER 100G single fiber optical transceiver module (Tx1309nm / Rx1304nm) are designed for use in 100 Gigabit



Contact Us

For datasheets, pricing, or custom telecom energy solutions, please visit:
<https://www.koskolong.co.za>