



Adam Tas Corridor Energy

Monitoring Access Core Switch





Monitoring Access Core Switch

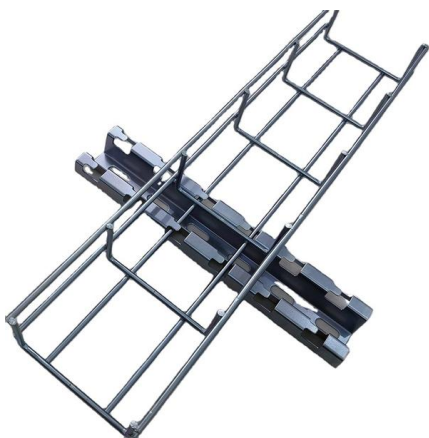
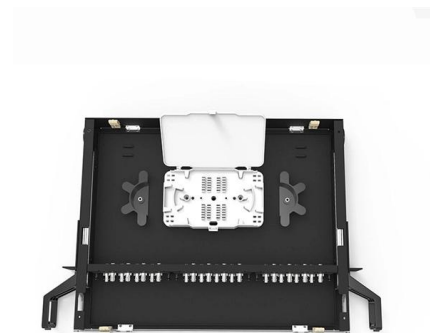


5 Best Switch Monitoring Software for 2025 (Paid)

Switches connect network cables to form "hops". Monitoring their performance is essential to keeping your network running smoothly.

Understanding the Core Switch: Key Differences and Uses

Explore the core switch's role as the backbone of your network. Discover key differences, uses, and insights into layer 3 core switch technology.



Cisco Switch Traffic Monitoring

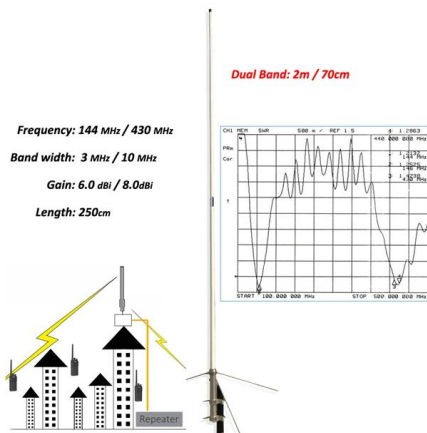
NetFlow Analyzer offers real-time traffic insights for the access switches and core switches in your network. You can monitor how well the network connection is established by viewing the traffic of

Access VS Distribution VS Core Switch

? Key Differences Access vs Edge: Access = connects internal end devices. Edge = connects



the internal network to the external WAN/Internet.

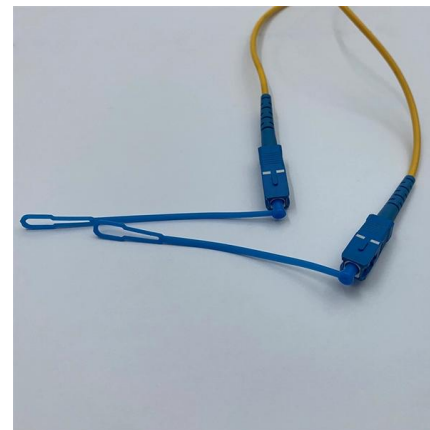


Core Switch

Core switches are defined as high-capacity switches located at the top of a cloud data center network, connecting aggregation switches and providing interfaces to wide area networks (WANs).

Core und Access Switch

Direkt auf den Access-Switchen, damit die Pakete schon da verworfen werden oder auf dem Core-Stack oder überall? Wenn auf dem Core-Stack, wäre dann nicht eine Gefahr vorhanden,



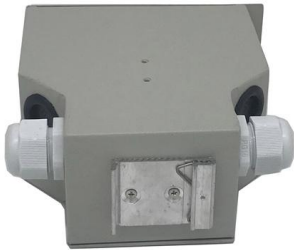
SMB Network Design: Core vs. Distribution vs. Access Switches

Don't overspend on network hardware. Our expert guide explains core, distribution, and access switches so you can design the right network for your SMB.



Core, Distribution, and Access Layer Explained with

Monitoring blindness occurs when teams lack visibility into core performance. The solution is implementing dedicated monitoring for core devices



Core Switch vs Access Switch , Definitions and Key Differences

Core Switch vs Access Switch. The core switch is used in the center of your network, while an access switch is placed on its edge. The main difference between these two kinds of

Core, Aggregation, or Access Switches? Choose the

Discover the crucial differences between core, aggregation, and access switches. Find out which type can best transform your network's



What Is a Core Switch in Networking?

What Is a Core Switch in Networking?
Understanding the Backbone of Your Network A core switch in networking serves as the high-capacity



Access vs. Distribution vs. Core Switch Comparison Guide

Compare Access, Distribution, and Core switches: understand their roles, features, and differences in enterprise network hierarchy. Make informed network design decisions.



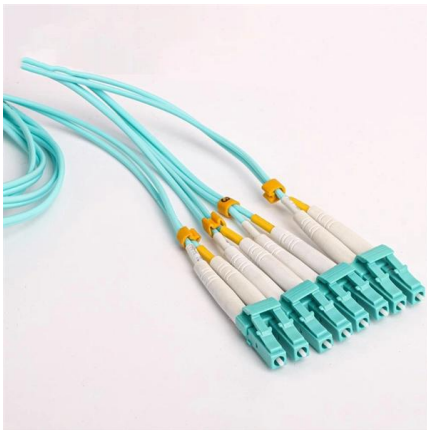
Core Switch vs Access Switch , Definitions and Key Differences

This article focuses on the hierarchical internetworking and core switch vs access switch differences. We also discussed the core switches type and built a basic understanding of how a



Switch Management

In this video, you will learn how to use various tools to manage and monitor Edgecore network switches, such as CLI, SNMP, and Syslog. In addition,

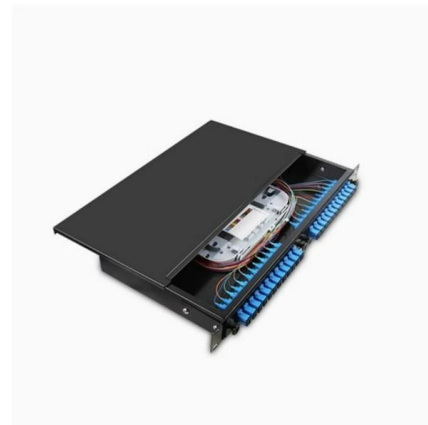


Access Switch vs. Core Switch

Access switches provide connectivity to end-user devices within a LAN, while core switches route data between different networks. Understanding the differences and similarities between access switches

Core Switch vs Access Switch , Definitions and Key Differences

The core switch is a high-end device that is used to connect all the access switches. It connects these access switches together and provides high performance for the entire network.



What is Switch Monitoring? Metrics, Tools & Best

Learn what switch monitoring is, why it matters, and which metrics prevent outages. Explore port-level visibility, AI-driven insights, real-world use cases, and best practices for modern



Understanding Access Switches: Key Components of

Access switches are at the core of this infrastructure, representing the first interaction of end-user equipment with corporate networking features. This



Core, Distribution, and Access Layer Explained with

Core, Distribution, and Access Layer Explained with Examples Ever tried explaining core, distribution, and access network layers to someone who

Core Switch Explained: Key Functions and Benefits

Discover what a Core Switch is, its pivotal role in network architecture, and how it boosts performance and reliability in your data infrastructure.



Checking your network's backbone with switch monitoring

Monitoring switch ports is essential for effective network management, as it involves continuously tracking port status and detecting unusual activity through



Cisco Core vs Access Switches: Key Differences

Compare Cisco core switches and access switches. Learn key differences for network design and performance.



50KW modular power converter



- Flexible Configuration**
 - Modular Design, Expanding as Required
 - Small/light, Well Mounted
 - Installed in Parallel for Expansion
- Powerful Function**
 - Support PV+ESS
 - Grid Support, Equipped with SVG Technology
 - On-Grid and Off-Grid Operation
- Reliable Protection**
 - Outdoor IP65 Design
 - Sufficient Protection Functions Equipped

Network Switch Monitoring with SNMP: How To Guide

Learn how to monitor network switches using SNMP and NPM. Keep network switch performance sharp, spot issues early, and keep your data moving

Modern hardware monitor with remote monitoring.

Cores is a hardware monitor background service with remote connection support and a modern UI. With Cores, you can monitor temperature sensors, fan speeds,





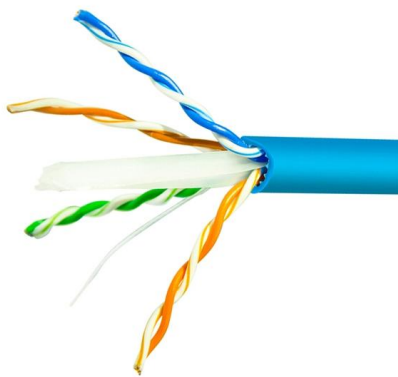
Core Switch vs Access Switch

Core switch vs access switch comparison. Learn the differences in network design, performance, scalability, and which switch is best for your setup.



What is Core Switch and How to Choose-QSFPTEK

Discover what a core switch is and learn how to choose the right one for your network. Explore key features in selecting a core layer switch. Make



What is a Core Switch?

What is a Core Switch? A Deep Dive A core switch is the backbone of a network, providing high-speed switching for data packets between different network segments; essentially, it's

Contact Us

For datasheets, pricing, or custom telecom energy solutions, please visit:
<https://www.koskolong.co.za>