



Adam Tas Corridor Energy

Monitoring cabinet failed to connect to the network





Overview

Use UI Device > User Identification > User Mapping and check the Status column in the Server Monitoring window. Check the service route from the firewall to the monitored server: Device > Setup > Services > Service Route Configuration > UID Agent. Do the modems make proper connect noises?

You should see the Tx light on the Computer modem and the Rx on the meter modem flash. The most common failure of metering systems is a loss of communications between the meter and the logging software running on a central server or computer. If your device is affected, new business rules will disrupt your mailing operation. The following tools can help you with troubleshooting: The Windows Event Viewer is a Microsoft tool that is part of the Windows operating system.



Monitoring cabinet failed to connect to the network



Systematic Monitoring At a Glance of Control Cabinets

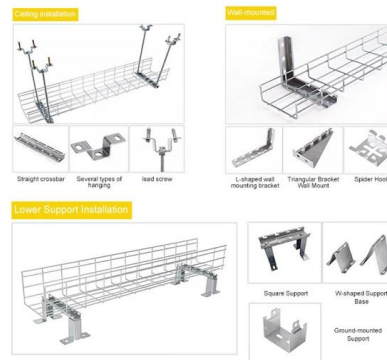
The DGs enable systematic monitoring of the control cabinet, filling a major gap in functionality. Function blocks enable closed-loop control of heating systems, ventilation systems, and air conditioning units

Power Monitoring Expert cannot launch because there is a problem

ION_Network - stores device information, such as device name, device type, and connection address (for example, IP address and TCP/IP port or device/Modbus ID. ION_SystemLog - holds system



INSTALLATION METHOD



Troubleshooting Offline Devices , Schneider Electric USA

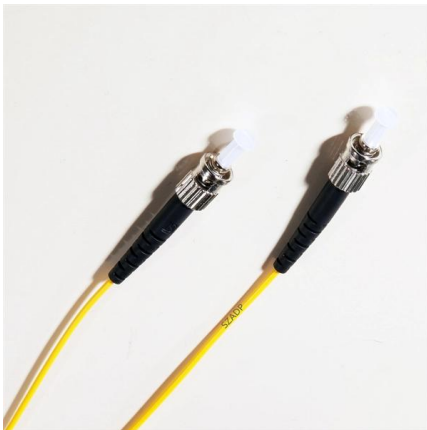
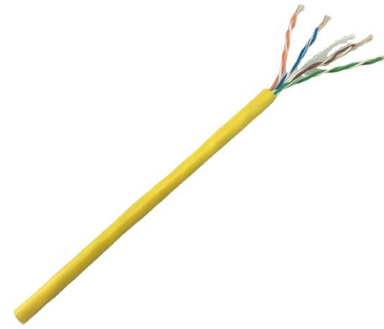
Right click on the network router, and select 'Restart'. A prompt will appear to confirm that continuing will restart several other services that are

Troubleshoot

Troubleshoot This section provides information on how to troubleshoot Power Monitoring Expert (PME) and how to resolve problems and issues.



To troubleshoot issues with PME follow these steps:



How to troubleshoot connection failure to the monitored server

If the monitored server status is showing as Connection timeout then check the network connection to the server. Check if the firewall is able to reach the server this can be checked by

cabinet monitoring system

A continuous monitoring of cabinets can prevent these fire events and hence increase safety and reliability of electrical energy supply. The solution is a RFID temperature monitoring system



Monitoring in the Control Cabinet Avoids Problems

Control cabinets have a central role in most applications. If the power supply from the mains is the cause of problems, troubleshooting can be difficult.





Remote Server Rack Cabinet Monitoring Over LAN and

In the Perseus Monitoring 155 the LTE modem allows monitoring via a mobile network and alerts via email and SMS. The LTE modem also provided a



Monitoring Failed · Issue #5695 · mysteriumnetwork/node

I tried again to connect to your exit node to check the location, but DNS server is not working. Because of it monitoring agent fails to check location via

Troubleshooting/diagnostics

In the event of connection problems the PING command can be used to ascertain whether the external controller can be reached via the network connection. If this



Tools for troubleshooting

Use a Modbus test utility to monitor and troubleshoot communications between devices and the software. For example, a Modbus test utility can help you identify if device communication issues



Cabinet Monitoring

Cabinet Monitoring TELSEC Controllers provide reliability to your "Always On" network by ensuring your Cabinet is operating properly!
TELSEC Remote



Fix Hik-Connect Errors , Network Issues , Device offline , Connection

Connection failed message and problems related to the network. To fix the problem you can check if the Hik-connect is enabled, check the network configuration, router rules and restart the router.



AshwinD24's gists · GitHub

GitHub Gist: star and fork AshwinD24's gists by creating an account on GitHub.





How can you set up the online connection again

The table below describes some measures and remedies that can be applied when communication or an online connection is not possible between the programming

Troubleshooting Meter Communications Issues - apt4power

In our latest guide, we share essential troubleshooting tips, from checking local meter power to ensuring your IP address settings are correct. Discover how to effectively ping your meters, connect locally,



Troubleshooting PC Meter Connect connection issues

Either the meter cannot communicate with PC Meter Connect, or PC Meter Connect cannot connect to the Pitney Bowes Data Center. Try your troubleshooting solutions in this order:

Configured server monitoring using WinRM over HTTP with Kerbero

Ping to the Kerberos server is successful. Navigate to Device > User identification > Palo Alto Networks User-ID Agent Setup > Server Monitor Account. Configuring IP address in Domain's



How to Set Up Remote Monitoring for Telecom Cabinets with ESTEL

Set up remote monitoring for telecom cabinet systems with ESTEL to boost security, cut downtime, and receive real-time alerts for critical conditions.

Fresh installed node doesn't connect "Monitoring failed"

Describe the bug I set up a mysterium node without copying my previous node settings and started it. It shows monitoring failed and poor quality Expected behavior It should just work right?



Cerbo GX: no comms

There is also a setting inside the GX to automatically restart when it loses its connection to the internet (this is more commonly needed when using



Secure Connect Gateway SAE-020219 Monitoring Failed to connect

Secure Connect Gateway SAE-020219 Monitoring Failed to connect Monitoring failed on 3x R740xd Storage Spaces Direct servers operating Windows Server 2019. Configure SNMP task



Troubleshooting communications to meters , Schneider Electric USA

Telnet into meter and check the ETH statistics to see network related probs. Check diagnostics viewer from Management Console to see total errors and what type of errors.

Electrical cabinet monitoring , Sensis by Fandis

Sensis is the Industrial Internet of Things tool for monitoring electrical cabinet, data collection and the developing of predictive diagnostic strategies.



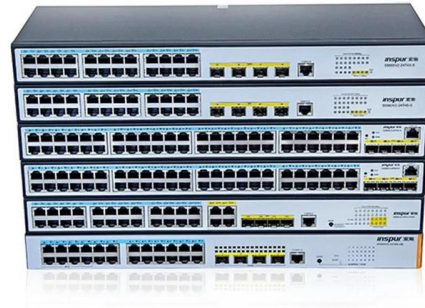
Scenario guide: Troubleshoot WMI connectivity and

Covers how to review the Windows Management Instrumentation (WMI) configuration, diagnose and troubleshoot WMI connectivity or access issues.



Routers do not show up on RMS even when the router has an internet

If a router is shown as offline in RMS even though it has an active Internet connection, it could mean a few different things: Remote monitoring on that router might not be enabled.



Contact Us

For datasheets, pricing, or custom telecom energy solutions, please visit:
<https://www.koskolong.co.za>