



**Adam Tas Corridor Energy**

# **NSK Fiber Optic Single Module**





## Overview

---

The module incorporates one channel optical signal, on 1310nm center wavelength, operating at a 50Gbaud data rate. Single fiber QSFP28 modules (commonly called BiDi transceivers) enable full-duplex 100G communication over a single optical strand. As bandwidth demands explode, 100G QSFP28 modules have become the backbone of modern data centers and 5G networks. But traditional dual-fiber solutions require twice the fiber cabling, escalating costs and complexity. Optical Transceivers SFPs 800G OSFP/QSFP-DD800, 400G QSFP112/QSFP-DD, 200G QSFP56, 100G QSFP28/CFPx, 40G QSFP+, 25G SFP28, 25G SFP28 Tunable DWDM, 10G SFP+/XFP/X2, 10G Tunable DWDM, 1G SFP, 155M SFP, DAC, and AOC. It is an optical module based on the QSFP28 (Quad Small Form-factor Pluggable 28) package, mainly used to achieve a high-speed photoelectric conversion function, which designed to meet the growing demand for high-bandwidth network communication.



## NSK Fiber Optic Single Module

---



### Single Mode Fiber

Single-mode optical fiber has a small core diameter through which only one mode will propagate. Single mode fiber provides higher transmission speeds and longer distances compared to multimode fiber,

### SFP Modules: Types, Selection Guide & Applications

These modules use light signals to transmit data over fiber optic cables, offering high bandwidth and long reach. They are further divided into: Single-Mode SFP (SMF SFP): Core



### Single-mode optical fiber

In fiber-optic communication, a single-mode optical fiber, also known as fundamental- or mono-mode, is an optical fiber designed to carry only a single mode of light

### Understanding 100G Single Fiber QSFP28 Module for

A 100G single fiber QSFP28 module sends 100-gigabit Ethernet data using one optical fiber. This device helps networks get faster without



## Single Mode (SM) Fibers , Coherent

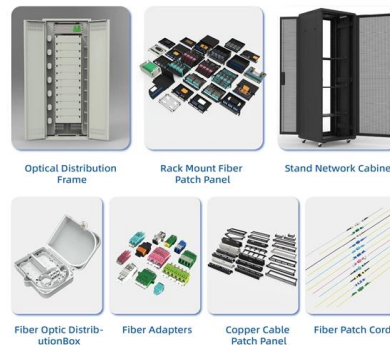
Coherent Single Mode Fibers maintain beam quality, and minimize attenuation and dispersion, and are offered from the visible through the infrared.



## Exploring 100G Single Mode QSFP28 Transceiver Types

Explore 100G single mode QSFP28 module types by distance, cost, and use case to select the best fit for data center, metro, or long-haul networks.

### An Extensive Library of Self-Developed Products



## The Key Differences Between 1-core, 2-core, Single

In optical modules, "core" refers to the light-transmitting channel in the fiber. A 1-core module uses a single fiber core for data transmission, while a 2





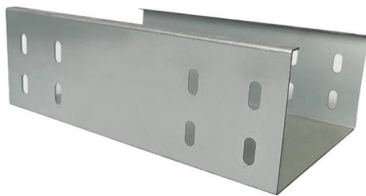
## The Key Differences Between 1-core, 2-core, Single

Single Mode fibers have a smaller core, allowing light to travel in a single, straight path, ideal for long distances with less signal loss. Multi-mode



## Optic Modules Datasheet

4 Optic Modules Data Sheet SFP (form factor) = small form-factor pluggable transceiver SMF (media) = single-mode fiber-optic MMF (media) = multimode fiber-optic XFP (form factor) = 10-gigabit small



## 100G QSFP28 Single Fiber (BiDi) Modules: Technology, Benefits

100G QSFP28 single fiber (BiDi) modules are a practical, proven method to increase the effective capacity of existing fiber plants, reduce cabling complexity, and optimize total cost of



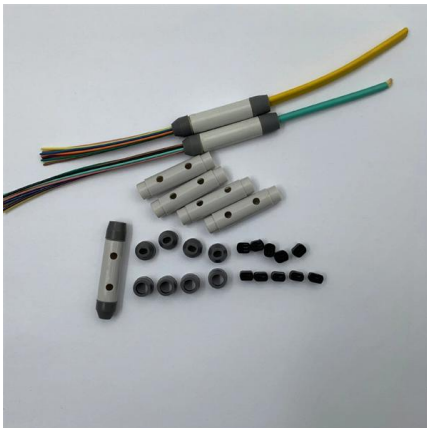
## Industrial GbE Fiber SFP Optical Transceiver Module

Industrial Gigabit Fiber SFP Optical Transceiver Module, Single-Mode 10 km 1000Base-LX (LC) Single-Mode Port, 10 km (6.2 mi.), MSA-compliant for



## What Is A Single-Fiber BiDi Transceiver?--ETU-LINK

When planning a fiber optic network, one key decision is choosing between single-fiber (BiDi) and dual-fiber optical transceivers. This guide from ETU-Link explains



## F-SV Optical Fiber

The F-SV Single-Mode Fiber from is all-glass and supports single-mode light propagation for a 633 - 780 nm operating wavelength range. This low attenuation, step-index fiber has a uniform core refractive

## 10G SFP+ module SM 20KM 40KM 80KM TX/RX

10G XFP module 10G XFP modules with fiber optics allow customers to utilize an XFP 10 Gigabit port on an existing piece of hardware to send either multi-mode





## Fiber Modules

SFP modules support very low EMI and excellent ESD protection. Featuring low power consumption, these fiber modules are ideal for enterprise LAN networks and other optical links.

### Silent Knight SK-FSL Fiber Card, Single Mode

The Honeywell SK-FML (Fiber-Optic Multi-Mode) and SK-FSL (Fiber-Optic Single-Mode) are plug-in fiber loop modules. These work as one channel to transmit or

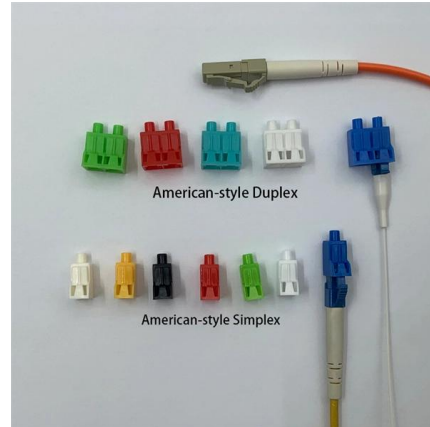


### 1G SFP Modules: A Deep Dive into Specs & Types

Learn how to choose and optimize 1G SFP modules. Compare specs, fiber vs copper types, troubleshooting tips, and best practices for reliable networks.

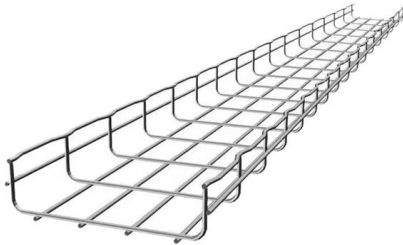
### Silent Knight® Multi-Mode/Single-Mode Fiber-Optic Module

Multi-mode and single-mode fiber-optic modules are plug-in fiber loop modules that work as a single channel to transmit or receive communications with Silent Knight® network interface cards.



### SFP Gigabit Fiber Module

Get the most out of your network performance with our 1000Base-EX LC singlemode 1310nm SFP Gigabit Fiber Modules.



### Wholesale Optical Transceivers Module , 100G

Shop high-speed optical transceivers from Unitekfiber. We offer 100% compatible 40G, 100G, and 400G QSFP-DD modules for data centers. Expert technical



### NSK Style Dental Implant 20:1 Handpiece Fiber Optic LED/Non LED

Find many great new & used options and get the best deals for NSK Style Dental Implant 20:1 Handpiece Fiber Optic LED/Non LED Contra Angle SA at the best online prices at eBay! Free





## Fiber Optic Single Mode, Honeywell Building Automation

The Fiber Optic Single Mode is a plug-in fiber loop modules. This work as one channel to transmit or receive communications with the Honeywell Silent Knight SK-NIC (Network Interface Card) ARCNET



## Single Mode vs Multimode SFP Modules: Which One to

Single Mode vs Multimode SFP Modules: Compare fiber types, wavelengths, cost, and transmission distance to select the right optical

## QSFP28 100G FR1 optical transceiver, single-mode,

The QSFP-10002-FR1 is a single lambda short reach single-mode 100G QSFP28 optical module transceiver compatible with the 100GBase-FR1 specifications. It



## Single Mode Fiber: Technological Innovations and

Explore the development trends of single-mode fiber and its promising future. Gain insights into the advancements shaping OS2 optical fiber technology,



### Single Mode SFP Fiber Module

Single Mode SFP Fiber Module is a cost effective way to connect a single network device to a wide variety of fiber cable distances and types. The primary goal of



### 100G QSFP28 Optical Transceiver

T1-QSFP28-100G-FR1 is designed for 2km optical communication applications. The module incorporates one channel optical signal, on 1310nm center wavelength, operating at a 50Gbaud data

### 100G Optical Module Selection Guide: Advantages and Types of

Explore the QSFP28 100G optical module, a vital component for high-speed network connections. Discover its unique features, advantages, and various types to meet diverse





## **ComBricks PROFIBUS Fiber Optic Ring Module -**

ComBricks module for singlemode optical PROFIBUS signal transmission via ring, point-to-point, line, star or hub topology. Signal transmission up to 30 km via

## **2km,100G QSFP28 PSM4 1310nm Optical Transceiver Module**

The Compatible QSFP28 Optical Transceiver Module is designed for 100GBASE Ethernet connectivity up to 2km over single mode fiber (SMF) using a wavelength of 1310nm via a MTP/MPO-12 connector.



## **Contact Us**

---

For datasheets, pricing, or custom telecom energy solutions, please visit:  
<https://www.koskolong.co.za>