



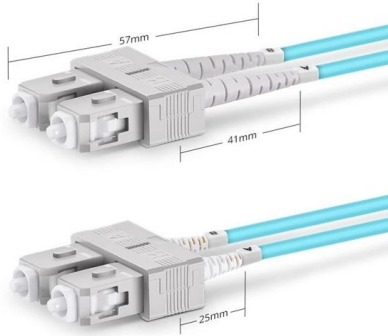
Adam Tas Corridor Energy

Net height of lighting cable trays





Net height of lighting cable trays



Duplex SC UPC

Cable Tray Sizing Calculator , IEC 61537 & NEC 392 Guide

Use this cable tray sizing calculator to check fill %, select tray size, and comply with IEC 61537 & NEC 392 with formulas, example and checklist.

Cable Tray Dimensions and Specifications as per NEC

The entire amount of the cross-sectional areas for all of the single conductor cables that are going to be positioned in the cable tray needs to be



Cable Tray Dimensions Guide: Standard Sizes, Tray

Explore standard sizes by tray type, understand width and depth limits, and see how to calculate and choose compliant cable tray sizes for real projects.

Cable Tray Width Selection for Installations with 600 Volt Single

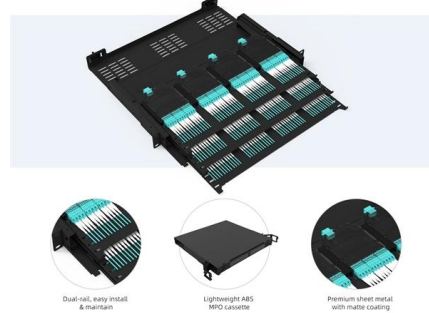
Cable Tray Width Selection for Installations with 600 Volt Single Conductor Cables National



Electrical Code (NEC) Section 318-11 Ampacities of Cables, Rated 2000 Volts or Less, in Cable Trays. (b)

Pre-Terminated Patch Panel

- Standard 19" width
- Max 144 fibers in 1U
- Ultra-High Density Ready



Cable Tray Size and Dimensions: How to Choose the

Learn how to calculate the perfect cable tray size and dimensions for your electrical project. This guide covers load capacity, fill ratios, and industry

B-Line series Cable Tray Design Considerations

As an industry leader in cable tray, Eaton offers one of the widest ranges of cable management solutions available in the market today with its B-Line series portfolio. With unmatched quality and service, we



Cable Tray Questions , Cable Tray Institute

NEC section 318-5 (e) indicates that multiconductor cables rated 600 volts or less are permitted in the same cable tray, however, separation of power and control cables is necessary as indicated in other



Free Cable Tray Sizing Calculator -- IEC, AS/NZS, NEC, BS

The cable tray calculator determines the required tray width and type based on the number and size of cables to be installed, ensuring adequate fill levels and derating compliance.

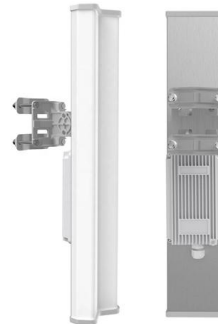


Proper Cable Tray Sizing for Efficient Installations

Proper cable tray sizing is critical for the efficient and safe management of electrical wiring in industrial, commercial, and residential

Complete cable tray manual for electrical engineers and

Complete cable tray manual for electrical engineers and designers (on photo: power cable management ladder tray systems assembled aluminum cable tray ladder



TECHNICAL AND SIZING DATA

Unitray manufacturers five loading depths: aluminum 66 mm, 90 mm, 128 mm, 137, and 175 mm in accordance with CSA standard C22.2 No. 126 M-91 and UL. Are used for changing directions on



Unlocking the Secret: Exact Electrical Cable Tray Dimensions for

Discover essential electrical cable tray dimensions, including standard sizes, materials, and proper installation guidelines. Learn how to select the right cable tray for your project with this



Cable tray manual

Nearly every aspect of cable tray design and installation has been explored for the use of the reader. If a topic has not been covered sufficiently to answer a specific question or if additional information is

Cable Tray Sizing

Learn cable tray sizing with accurate width and dimension calculations. Avoid common mistakes for efficient cable management. Read our expert guide now!



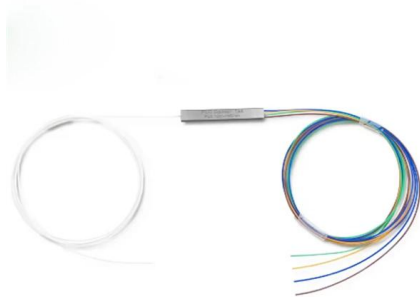


Cable Tray Technical Guide A practical guide to product selection and

In designing supports for a cable tray system, consideration should be given to the loads associated with future cable additions and any additional loading that may be applied to the cable tray system (e.g.,

Cable Tray Load Calculation and Sizing: Your Easy Guide

Worried about cable tray capacity? Learn simple cable tray load calculation steps. This guide helps you pick the right tray every time, keeping



GUIDE CABLE TRAYS TECHNICAL

In accordance with its continuous improvement policy, Legrand reserves the right to change the specifications and illustrations without notice. All illustrations, descriptions and technical information

Ultimate Guide to NEMA Cable Ladder Size (NEMA 1

The Ultimate Guide to NEMA cable ladder sizes (NEMA 1, 2, 3, 4). Compare essential specifications, including side rail heights, load ratings,



Cable Tray Systems: Requirements and Best Practices

Comprehensive guide to cable tray systems requirements: tray types, materials, loading, supports, bonding, routing, and best practices for safe electrical cable management.



Cable Tray Design and Sizing Guide

The document discusses key factors to consider when designing a cable tray system, including:
1) Determining the appropriate width and height of the tray



GUIDE CABLE TRAYS TECHNICAL

NEMA VE 1-2017 Specifies requirements for metal cable trays and associated fittings designed for use in accordance with the rules of Canadian Electrical Code, Part I and the National Electrical Code®





Understanding Cable Trays Specifications: Length, Width, Height, and

Introduction to Cable Trays Cable trays are essential components in electrical systems, providing a secure and organized pathway for electrical wiring. When selecting a cable tray for a project, several



Cable Ladder Cable Tray Weight Calculation Guide

Learn how to perform a Cable Tray Weight Calculation for accurate estimations. Discover the formulas and step-by-step methods for calculating the

FactSheet

FactSheet Electrical Safety Hazards of Overloading Cable Trays According to the 2005 National Electrical Code® (NEC), a cable tray system is " unit or assembly of units or sections and



A Guide to Installing and Supporting Electrical Cable Trays

A professional guide to installing electrical cable tray systems per NEC Article 392. Covers support, securing cables, and fill calculations.



Cable Tray Technical Guide A practical guide to product selection and

Cable Tray Technical Guide A practical guide to product selection and installation This guide for engineers and installers has been developed by ABB as a practical reference regarding cable tray



Contact Us

For datasheets, pricing, or custom telecom energy solutions, please visit:
<https://www.koskolong.co.za>