



**Adam Tas Corridor Energy**

# **Network Intelligent PDU Communication Failure**





## Overview

---

Failure to update the firmware can cause the PDU to malfunction and potentially cause damage to equipment. Unlike traditional PDUs, intelligent PDUs have built-in network connectivity and sensors, which allow them to monitor power usage, temperature, humidity, and other. A PDU reset is a common troubleshooting practice to recover the PDU if the PDU cannot be reached via the PDU web UI, not responding to pings, not showing stats on the LED screen, not lighting up, or showing a red status light. Geist's Upgradeable (GU) PDU daisy chain application provides redundancy by offering a fault-tolerant daisy chained solution utilizing Rapid Spanning Tree Protocol (RSTP) which allows users to connect multiple PDUs to the network while only using two network switch ports. I'm assuming that I've got a corrupted firmware load, and need a re-load, but I can't find a upgrade/reload for the OM-5104.



## Network Intelligent PDU Communication Failure

---



### G5 Intelligent PDU User Manual v4

Connecting the PDU to a LAN provides communication through an Internet or Intranet connection enabling monitoring and control over the intelligent power distribution unit.

### Providing Network Connectivity to Intelligent PDUs Without Requiring

RSTP prevents the network loop from causing major communication failures that would otherwise occur. With loops and RSTP, there is no longer a single point of failure; instead there is a redundant



### What is an Intelligent PDU and What Can it Do for Your

By Marc Cram, Legrand An Intelligent Power Distribution Unit (PDU) is a networked power distribution unit that increases the efficiencies of data

### Troubleshooting

Check the wiring continuity between the PDU input and the input source. Specific output circuit (s) have no power. Associated branch circuit



breaker (s) is OFF. Turn the branch circuit breaker (s) ON. The

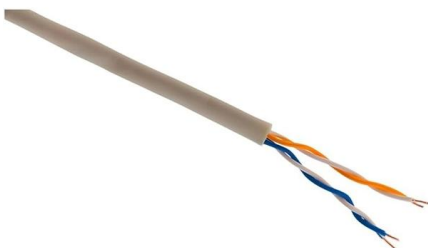


### **ES2P Intelligent PDU User Manual V1.0**

Press and hold the Reset Button for 8 seconds to recover from an Intelligent Network Controller communication failure. This will cause a reset of the iNC controller, all configuration(s) will be retained.

### **Intelligent Rack PDU Installer/User Guide**

Sensors use a serial communication protocol and are subject to network signaling constraints dependent on shielding, environmental noise and length of wire. Typical installations allow runs of up to 600 feet



### **CONSIDERATIONS FOR A HIGHLY AVAILABLE INTELLIGENT**

As the last link in the power chain delivering critical power to IT loads, intelligent rack PDUs are a strategic asset for achieving high availability through elevated levels of responsiveness to change in



## What are The Common Problems with Intelligent PDU's

Find out what problems are associated with an intelligent PDU and get tips on how to identify and address these issues.



## Best Practices Guide for Managing PDUs in Data Centers & Remote

Many PDUs lack native support for APIs, scripting interfaces, or integration with infrastructure-as-code platforms. This means IT teams are forced to manage PDUs manually and configure each unit

## How to Troubleshoot an Intelligent PDU , Intelligent PDU

Get tips on how to troubleshoot your intelligent PDU. Learn what common issues may arise and the best practices for maintaining and optimising your intelligent PDU performance.



## G5 PDU User Manual

Press and hold the Reset Button for 8 seconds to recover from an Intelligent Network Controller communication failure. The PDU is defaulted to DHCP. If you are connected to a network



## prod.vertiv.cn

Hier sollte eine Beschreibung angezeigt werden, diese Seite lässt dies jedoch nicht zu.

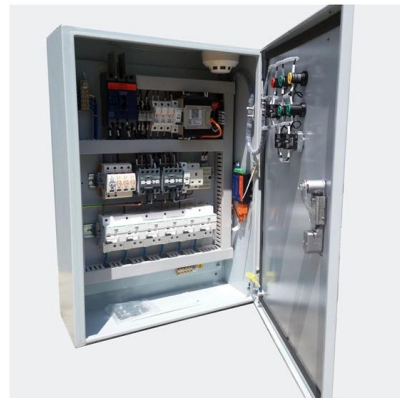


## Solved: 60kW PDU Internal Comm Failure and Data version of the PDU

I've got a Sub-feed PDU that I'm getting a "PDU Internal Communication Failure" and a "The data version of the PDU controller is incompatible with the data version of the Network"

## Panduit: How to Reset a Panduit PDU , Dell US

Soft Reset: Press and hold the Reset Button for 8 seconds to recover from an Intelligent Network Controller communication failure. This causes a reset of the iNC controller, all configurations





## **VERTIV VP8841 POWER DISTRIBUTION UNIT**

View and Download Vertiv VP8841 manual online. INTELLIGENT RACK PDU. VP8841 power distribution unit pdf manual download. Also for: Vp8867, Vp8865,

### **News**

Tools like PRTG Network Monitor provide real-time visualization, customizable alerts, and detailed reporting for each connected PDU. Smart PDUs also integrate with centralized management

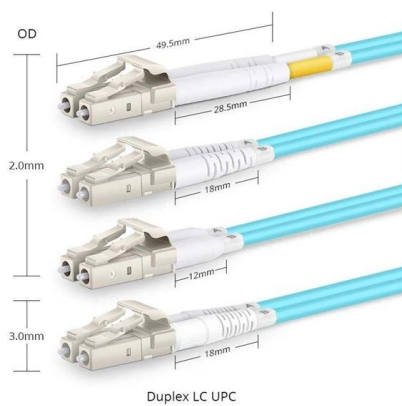


### **Intelligent PDU User Manual v1**

o Each PDU is separately connected to the expansion and main unit's private communications network. o The two PDUs relate to a data communications bus to allow PDUs to share user- defined information.

### **Solved: Switched Rack PDU:Communications lost.**

Switched Rack PDU:Communications lost. Hi we use your Switched Rack PDU's for our server room and have been getting notifications regarding this. What is the best course of action to



## Providing Network Connectivity to Intelligent rPDUs Without Requiring

Implementing both new network switches and new intelligent rPDUs would be cost prohibitive. Three possible applications are to use a network port for each rPDU, daisy chain the rPDUs or daisy chain

## Eaton ePDU G3 troubleshooting guide

I Communication issue I Internal failure 1 - Make sure that IP settings and communication parameters (PC and ePDU) are set according to the Eaton ePDU G3 Operations Manual and normal protocols. 2



## Solved: Remote RPDUs communication lost

I deploy AP8841 (and AP8858NA3) typically in tandem -- two per rack. I chain them together using the In/Out ports. For several of these, the GUI reports: Rack PDU 1: Remote RPDUs 2



## Video: Why is my AP8XX Rack PDU reporting communications lost

They indicate that the on-board Network Management Card has lost communication with the Rack PDU monitoring hardware. Less commonly, this could be due to a timeout within the Rack



## Solved: PDU lost component communication

APC UPS Data Center & Enterprise Solutions Forum Schneider Electric Community APC UPS, Critical Power, Cooling and Racks APC UPS Data Center & Enterprise Solutions Forum PDU

## Packet Tracer

When I tried to send a PDU from one network to a remote network, it fails. Attached is the Packet Tracer file I am configuring along with the IP addressing scheme applied in this network.



## AP7951 Switched Rack PDU: Communications lost.

Hi My AP7951 web interface was not responding so we pushed the reset button in, This then allowed us to load/login to the web interface however it now says "\*Switched Rack PDU:



### **Solved: AP7930 Switched Rack PDU "Communications lost" "Communications"**

This is usually an indication of an internal communications failure that likely will require replacement of the unit. The network management card is having trouble maintaining communication



### **APC Switched Rack Power Distribution Unit-PDU User**

Product Description Features of the PDU The APC® Switched Rack Power Distribution Unit (PDU) is a stand-alone, network-manageable device that allows

### **Solved: PDU lost component communication**

if this was the case, the update only applies to the principal and, since it does not have the same version, it gives a communication error and must update the PDUs individually.



## **Contact Us**

---

For datasheets, pricing, or custom telecom energy solutions, please visit:  
<https://www.koskolong.co.za>