



**Adam Tas Corridor Energy**

# **Network Patch Panel Installation Rules**





## Overview

---

Learn the step-by-step network patch panel and keystone jack wiring methods, including essential tools, T568A/B wiring sequences, and tool-free installation tips. This guide covers everything you need for efficient network setups, from cable preparation to final. Both work on the same principle, using the module's built-in clips to press the network cable directly into the module's wire clamps, eliminating the need for punching down steps. This installation guide focuses on what a patch panel does, patch panel installation basics, and how to connect patch panel to switch while keeping cabling. They come in a range of sizes, and are typically mountable, whether that's on a wall, or on a rack to make for easier. Whether you are a seasoned network administrator or a beginner, this comprehensive guide will equip you with the knowledge and skills.



## Network Patch Panel Installation Rules

---



### Complete Guide to Patch Panels: Types, Benefits, and

Discover everything you need to know about patch panels, including different types, their benefits, and installation tips. Enhance your network

### Selecting and Installing a Patch Panel

By the time you're done watching this video, you will be able to size, select, and install a network patch panel.



### How To Set Up A Network Switch And Patch Panel

Learn how to set up a network switch and patch panel with our comprehensive guide. Get expert tips for optimizing your network performance.

### A Complete Guide to Installing and Managing Patch Panels

By investing in quality patch panels and following best practices for installation and upkeep, you



set the stage for an organized, efficient networking environment that meets both current

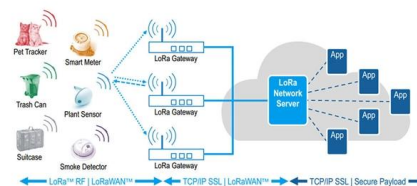


### How to Wire a Patch Panel

To achieve this kind of wiring, consider the following guide on how to wire a fiber optics patch panel: Buy a patch panel When buying the home network patch

### Patch Panels: A Complete Guide

It's also important to check that whatever patch panel you are looking to buy is compliant with all important safety standards, is RoHS and C E



### Patch Panels for LAN Installation: Flexibility is Crucial

In smart buildings, patch panels are especially important for maintaining flexibility. When nearly everything in a smart building is connected to



## Cable Plant Basics: Master Network Management

Mastering Network Management: The Essential Guide to Patch Panels Cable Plant Basics: Master Network Management - ITU Online Learn



## Patch Panel Installation: A Comprehensive Guide

Proper patch panel installation is essential for creating a reliable, manageable, and scalable network infrastructure. By following the steps and best practices outlined in this guide, you can ensure a

## A Complete Guide to Installing and Managing Patch Panels

Are you looking to streamline your network organization? If so, patch panels might be the solution you've been searching for. These handy devices can significantly improve cable



## trueCABLE's Shielded Wall-Mounted Patch Panel

Discover trueCABLE's 12-port shielded wall-mounted patch panel. Features, compatibility, and step-by-step install guide for small business and



## How to Wire a Cat5e Patch Panel?

Wired networks can still deliver stable, high-performance connectivity--and a Cat5e patch panel helps centralize and manage incoming



## What is a Patch Panel and Why You Need It?

A patch panel is a piece of hardware with multiple wire ports that are used to connect various IT devices together. They are found in IT and telecom

## Complete Guide to Patch Panels: Types, Benefits, and Installation Tips

Discover everything you need to know about patch panels, including different types, their benefits, and installation tips. Enhance your network efficiency with our comprehensive guide.







## Comprehensive Guide to Network Patch Panel & Keystone Jack

Learn the step-by-step network patch panel and keystone jack wiring methods, including essential tools, T568A/B wiring sequences, and tool-free installation tips.



## How To: Dressing Ethernet Cables into Patch Panels

This blog post provides a step-by-step guide on how to dress Ethernet cables into patch panels. The post covers the following topics: preparing the



## SUPPORTS DIN RAIL INSTALLATION



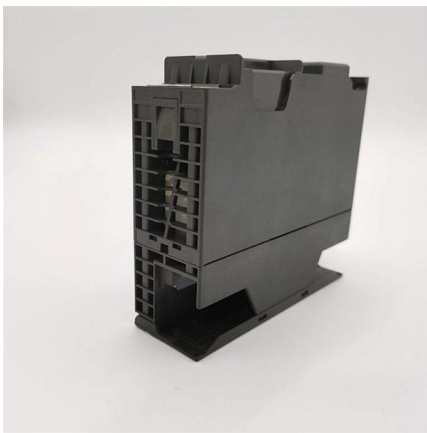
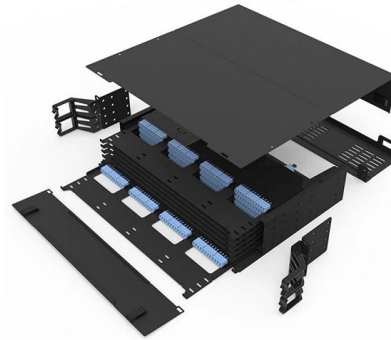
## How to Install Patch Panel and Switch?

This installation guide focuses on what a patch panel does, patch panel installation basics, and how to connect patch panel to switch while keeping



## A Complete Guide on RJ45 Patch Panel Installation and

RJ45 patch panels are vital for efficient network cabling. Discover installation steps and troubleshooting tips to maintain a stable and organized



## Structured Cabling Patch Panel Setup Guide for Your

A step-by-step guide to structured cabling patch panel setup. Learn best practices to organize network cables in your data center for peak performance.

## The Ultimate Guide to Patch Panels for Network Administrators

Learn how patch panels can simplify network management, improve performance, and reduce downtime. This comprehensive guide covers the benefits, installation, and maintenance of patch panels.



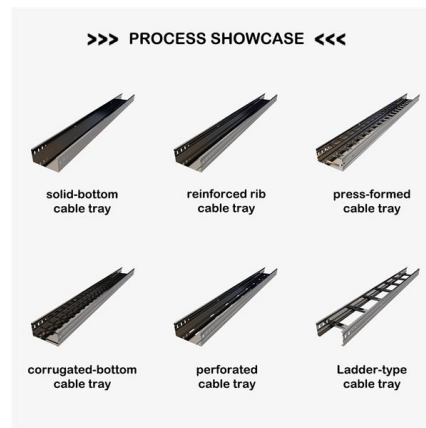
## Installation Steps And Notes of Network Patch Panel

1. Definition and working principle of network patch panel  
The network patch panel is a network component that connects input and output LAN lines or other



## The Ultimate Guide to Patch Panels for Network Administrators

In this comprehensive guide, we'll cover the benefits, installation, and maintenance of patch panels, providing you with the knowledge to optimize your network infrastructure.



## Contact Us

---

For datasheets, pricing, or custom telecom energy solutions, please visit:  
<https://www.koskolong.co.za>