



Adam Tas Corridor Energy

Network cabling patch panel numbering rules





Overview

ANSI/TIA-606-B also contains improved identifiers for patch panels and ports. TIA-606-C is the latest update to the voluntary standard for administering telecommunications cabling infrastructure, released by the Telecommunications Industry Association (TIA) in July 2017. A practical guide to accurate patch panel labeling that follows ANSI/TIA-606-D, matches real OEM panel geometry, and uses Fox-in-a-Box®, Labacus Innovator®, and the Prolab® Patch Panel module to produce consistent labels for patch panels, cables, and test results in seconds. The identifier shall have a format of FS-AN, where: N is two to four numeric characters designating the port on the patch panel, or the section of an IDC connector on which a four-pair horizontal cable is terminated in the TS. All ports on patch panels and all positions on termination blocks shall be labelled with the corresponding port number or position number and. The site is structured as follows: 90% of the structured cabling comprises of: Cable terminated at patch panel in comms cab at one end and RJ45 plugged into a desk mount switch in an office.



Network cabling patch panel numbering rules

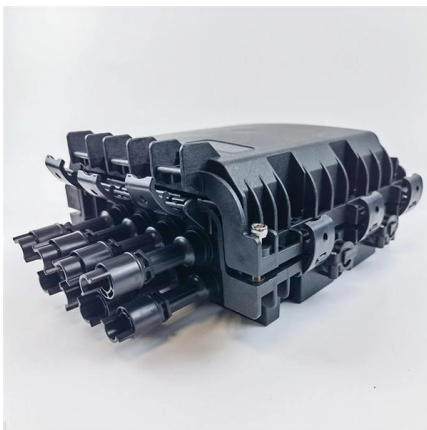


What is a Patch Panel?

A patch panel uses a patch cord, a sort of jumper cable, to create each interconnection between the terminated patch panel and the network

How To Label a Patch Panel

Get the patch panel labels right and the rest of your network cable labeling falls into place. Clear, durable labels on patch panels and cable labels



Labelling for network equipment & infrastructure

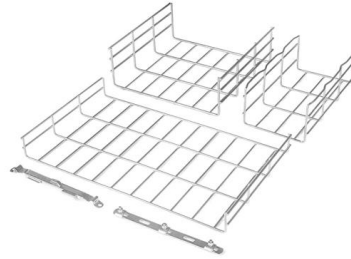
All ports on patch panels and all positions on termination blocks shall be labelled with the corresponding port number or position number and optionally with additional identifier fields as practicable. Use the

What is a Patch Panel, and What is It Used For?

Patch panels simplify cable management, enhance troubleshooting, and provide



documentation and traceability for all connected workstations. A



Labelling Network Cables and Wall Jacks

I posted previously about some networking issues that we have been facing, and my main job for the moment is now to document the network. I am

Order Matters: Why Proper Labeling Schemes Are

When most people think about network cabling, they usually imagine wires, connectors, and equipment. However, one of the most important parts of



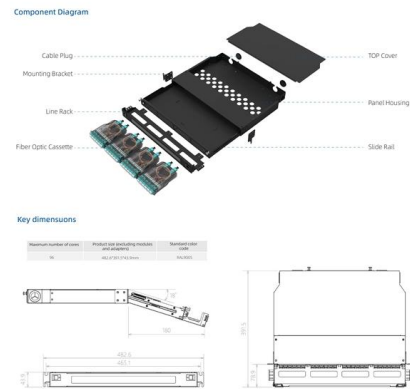
Proper Cable Labeling Guidelines

Cable labeling is an essential work. Every cable you installed should be labeled. Because labeling can not only save you lots of time on



What's your port/patch panel labeling method?

From a room numbering perspective, get a copy of the buildings blue prints and assign each area your own code. Eg for the plantroom; PLNTRM-001



Network cable labeling , Patch cable labeling , Texit

In this article, we show you how to implement permanent and structured network cable labeling in just a few steps and provide practical

A Guide to Patch Panels

What is the purpose of a Patch Panel? Patch Panels create a centralized point of access in a racking unit, providing organisation and



Connecting the Dots: Understanding Patch Panel

The patch panel typically consists of multiple ports or jacks, where each port corresponds to a specific network cable. These ports are labeled or numbered to



Order Matters: Why Proper Labeling Schemes Are

We recommend numbering jacks in a logical sequence that follows a pattern, such as moving clockwise from a fixed point in the office, like the main

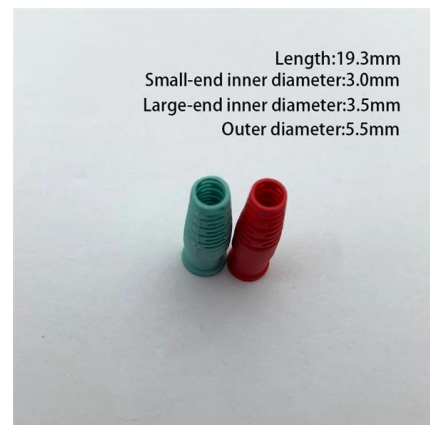


Cable Labeling Standards: ANSI / TIA-606-C

TIA-606-C is the latest update to the voluntary standard for administering

Boiling down the 606-A labeling standard , Cabling

Within this article is a simplified explanation of these new requirements for labeling, and a set of "how-to" solutions that comply with the requirements that





Quora

Hier sollte eine Beschreibung angezeigt werden, diese Seite lässt dies jedoch nicht zu.

How To Label A Fiber Patch Panel

Labeling the fiber patch panel is crucial for easy identification of each fiber and for efficient troubleshooting and maintenance. Here are some tips on



Patch Panels: A Complete Guide

Patch Panel Size However, if you are looking to connect a large number of devices, there are plenty of options for expansive patch panel designs.

Patch panel documentation

I have been struggling to keep my documentation about all sorts of patching panels up2date how do you keep documentation about patching of all sorts of cabling, divided over several

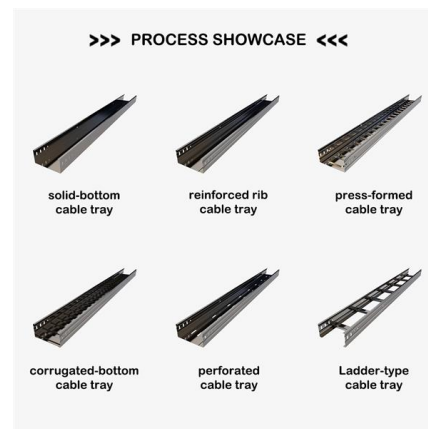


Understanding an Ethernet Patch Panel Diagram

Ethernet patch panel diagram is a visual representation of the connections between Ethernet cables and network devices, such as switches and routers. It provides a

Proper Labeling of Data Center Infrastructure Components

ANSI/TIA-606-B also contains improved identifiers for patch panels and ports. Patch panel identifiers can now use one or two characters to designate the patch panel location starting at the top of the



How to Label Patch Panels Properly? - MakeID

In today's cabling systems, properly labeling patch panels can significantly bolster the efficiency of network management. A



How To Label a Patch Panel

Measure the real label areas, port spacing, groups, and rows on your panel before you start printing. Use a structured naming scheme aligned with



Mastering Patch Panel Cable Management for Optimal

Simplify network performance with expert cable management tips. Explore ascentoptics for advanced patch panel solutions today!

Cable Plant Basics: Master Network Management

Without a patch panel, you'd face a spaghetti mess--impossible to troubleshoot or reconfigure efficiently. Patch panels simplify this by providing





How to Wire Ethernet Patch Panels Properly



How to Wire Ethernet Patch Panels When you're building a network, it's often ideal to use a patch panel to direct cables and organize long Ethernet runs -- especially if

Cable Labelling 101: A Beginner's Guide

Establishing a minimum level of information that should be included on cable labels, defining a labelling standard that maps a cable precisely to the floor,



The Ultimate Port/Patch Panel Labeling Method

How can Cenetik help you manage label patch panel ports? Cenetik makes it easy to track and manage your patch panel inside the documentation

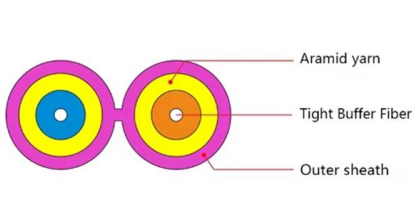
A Guide to Patch Panel Cable Management - VCELINK

Using patch panels is essential for efficient cable management in small or large-scale network installation. Use the right patch panel for your network need.



Patch panel labels and default numbers : r/networking

I am redesigning our network closets/IDFs and would like to take advantage of the 1ft patch cable and up/down patch panel and switch strategy. The main benefit for me is keeping a small stock of pre



Contact Us

For datasheets, pricing, or custom telecom energy solutions, please visit:
<https://www.koskolong.co.za>