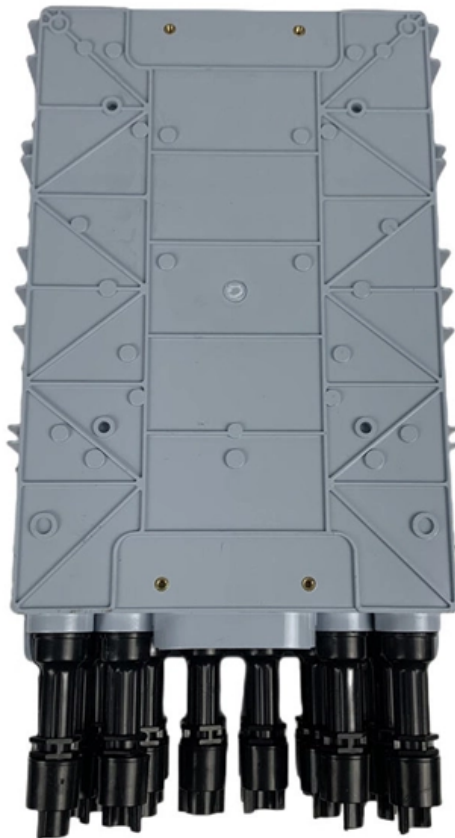




Adam Tas Corridor Energy

New Zealand Imported Distribution Box Brand Agent





New Zealand Imported Distribution Box Brand Agent



IMPORT DISTRIBUTION LIMITED NZBN:9429046154521

Import Distribution Limited was incorporated on 29 May 2017 (Monday) and as of 31 May 2017 (Wednesday) is a Registered NZ Limited Company.

DISTRIBUTION BOX LIMITED :: New Zealand :: OpenCorporates

Free and open company data on New Zealand company DISTRIBUTION BOX LIMITED (company number 5697911), DFK Oswin Griffiths Carlton Limited, Level 4, 52 Symonds Street, Auckland, 1010



Import, Wholesale and Distribution Business for Sale NZ

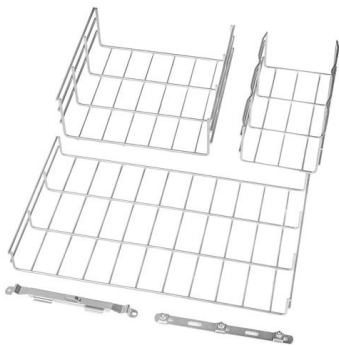
Search the 47 Wholesale Distribution Businesses for Sale NZ on our NZ Biz Buy Sell site. View New Zealand Import, Food Distribution, Distribution and Wholesale

New Zealand

New Zealand - Distribution & Sales Channels Discusses the distribution network within the country from how products enter to final



destination, including reliability and condition of distribution mechanisms,

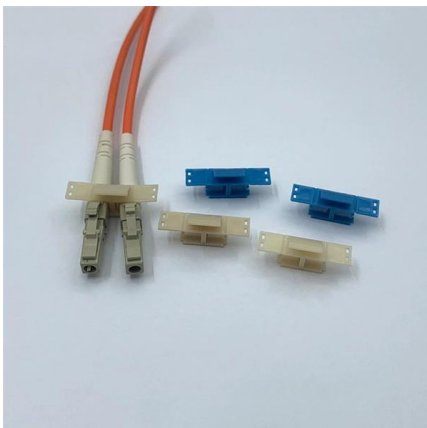


Brand Representation , New Zealand , Zebra International

Working with Zebra International not only gives you a chance to grow your business, but also allows you to introduce your brand to the New Zealand market, tapping

Brand Distribution & Marketing NZ

If you're an international brand looking for New Zealand representation and/or distribution, Brand Protocole can help. We have experience representing local



Importing laws

Learn about your obligations with Customs and MPI when importing commercial goods into New Zealand.



New Zealand

Most company head offices are based in Auckland, New Zealand's largest city. The Port of Tauranga is the country's largest commercial port by total cargo volume and container throughput, handling over



Step By Step Guide To Importing Goods Into New Zealand

Importing goods into New Zealand involves more than logistics - you'll need to manage customs, taxes, product compliance, and consumer-facing legal



Register as a commercial importer

If you're importing goods worth more than NZ\$1,000, you need to register as a commercial importer and obtain a client code and a supplier code.



Importing to New Zealand: A Guide

Importing goods into NZ? From customs regulations and import duties to documentation, here's what you need to know for smooth clearance into New



AshwinD24's gists - GitHub

GitHub Gist: star and fork AshwinD24's gists by creating an account on GitHub.



Focus creates quality products



HRB Jacobi

We apply our knowledge and skills in support of all major New Zealand department stores, retail chains and independent traders. We also ship internationally for large companies requiring offshore retail

New Zealand

Using An Agent Or Distributor Establishing An Office Franchising Direct Marketing Joint Ventures/Licensing Express Delivery Due Diligence Importer-distributors are a more common channel for products requiring technical knowledge, service, repairs, or spare parts. The size of the New Zealand market typically allows one distributor per unique product/manufacturer. Many distributors handle more than one

4-port 8-core LC wall-mounted fiber terminal box (empty frame)





manufacturer's products. A stocking importer or distributor is important where conti See more on trade.govboxdistribution .nz

Box Distribution ,, National distributor

Box Distribution is a national distributor in FMCG industry catering to New Zealand market.



Importing

Importing goods from overseas can have advantages for your business, but you'll need to do some research before putting in an order. Plan well, know your responsibilities and build strong

How to find, assess and work with Indian distributors

Most New Zealand exporters use an experienced distributor who is accustomed to working with international clients and has established



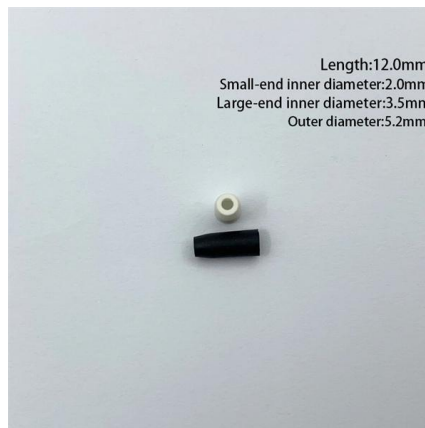
Multi-channel Brand & Product Distribution NZ

At Brand Protocole, we leverage our experience and contacts to identify, target and secure multiple sales channels for your brand or product range. We offer a total



Sales

We provide optimal coverage that ensures brand availability and visibility. Our smart coverage is achieved by various routes to market such as pre-sale and van sale channels, sub-distributors and



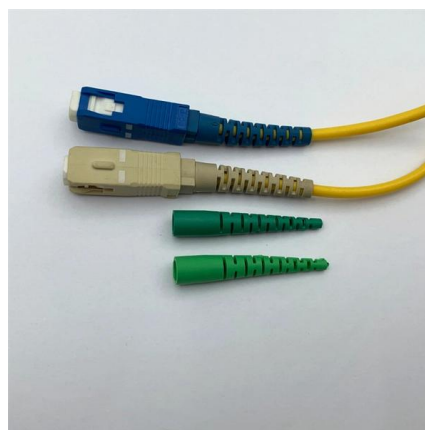
Wilson Consumer Products , NZ FMCG Importer

We are your sales team in store across all of New Zealand. With a full nationwide team with 60+ full time people, supported by 300+ contract merchandisers we



About Us , Redwood Pacific Ltd

Redwood Pacific is a New Zealand-owned importer, marketer, and distributor of Foods & Confectionery. We create imaginative products and brands that are



Top Distribution Companies in New Zealand

Discover New Zealand distribution companies. Compare logistics firms for warehousing, fulfillment and transport -- hire the right partner.





Importing to NZ , Imports & Exports , Best Broker,

Importing is Cost-Effective, Efficient and Safe with Sneddens We devise smart shipping strategies by leveraging world-leading technology and considerable



Importing Goods into New Zealand

Learn how to import goods into NZ. Our guide covers 2026 updates to import GST, duties, and levies to ensure your international delivery is seamless.

NZ Brand Licensing Agent

We offer a total brand development, distribution and marketing solution coupled with a strong network of relationships with 700+ Kiwi retailers. As a brand licensing agent, our objective is to help you to



Style Fallow

Style Fallow is a family-owned fashion distribution business, dedicated to premium brands. We offer sales, warehouse distribution, and international agency representation, ensuring strong support for



Brand Distribution & Marketing NZ

Looking for New Zealand agent to represent your brand? If you're an international brand looking for New Zealand representation and/or distribution, Brand



Home

Our Brands Digital imports are privileged to be the New Zealand distributors for the following brands Triax, Wolsey, Helix, Ezi-Fix, RV Tech and TechniSat, Telestar We are uniquely provisioned with a

New Zealand

New Zealand's modern distribution infrastructure supports diverse supply chain and inventory strategies. Many well-established companies with nationwide networks provide trading, transportation,





Contact Us

For datasheets, pricing, or custom telecom energy solutions, please visit:
<https://www.koskolong.co.za>