



Adam Tas Corridor Energy

North Macedonia QSFP28 Optical Module NRZ





North Macedonia QSFP28 Optical Module NRZ

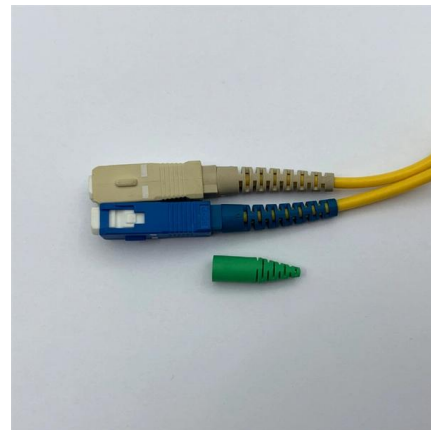


100G-QSFP28-AI and Data Center Networking

These products feature four channels of 25G NRZ electrical signals and four channels of 25G NRZ optical signals, a duplex LC connector, a distance of up to

QSFP28 vs SFP56: Key Differences, Specifications and

Explore the key differences between QSFP28 and SFP56 optical modules. Understand their roles in data centers and how they compare in



Small Form-factor Pluggable

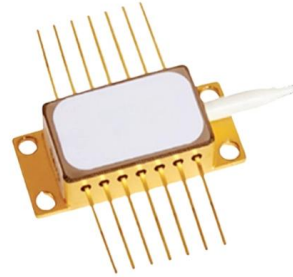
Small Form-factor Pluggable Small Form-factor Pluggable connected to a pair of fiber-optic cables Small Form-factor Pluggable (SFP) is a compact, hot-pluggable

100GBASE-LR4 QSFP28 4 x 25G NRZ 1310nm 10km DOM Duplex

100GBASE-LR4 QSFP28 Optical Transceiver Module (SMF, 1310nm, 10km, LC, DOM) The



QSFP28 module provides 100GBase-LR4 throughput up to 10km over a standard pair of single mode fibre



100Gb/s QSFP28 SR4 Optical Transceiver Module

Low Power Mode (LPMode) pin is used to set the maximum power consumption for the module in order to protect hosts that are not capable of cooling higher power modules, should such modules be

100GBASE-BX80-U QSFP28 BiDi 4 x 25G NRZ 1270nm-TX/1310nm

It operates on 1270 nm (TX) / 1310 nm (RX) wavelengths and uses a standard LC connector. The module integrates cooled 4 x 25 Gb/s LAN-WDM NRZ EML lasers, ensuring stable and reliable



FS Community

Hier sollte eine Beschreibung angezeigt werden, diese Seite lässt dies jedoch nicht zu.



100GBASE-4WDM-40 QSFP28 4 x 25G NRZ 1310nm

100GBASE-4WDM-40 QSFP28 Optical Transceiver Module (Industrial, SMF, 1310nm, 40km, LC, DOM) The 100GBASE-4WDM-40 QSFP28 transceiver



SR4 vs LR4 vs ER4 vs ZR4: Which 100G QSFP28

Confused between SR4, LR4, ER4, and ZR4? We break down 100G QSFP28 modules by performance, cost, and compatibility. Stop guessing --

100G QSFP28 Transceivers: LR, ER, ZR Complete

Explore 100G QSFP28 transceivers: SR4, LR4, ER4, ZR4 variants. Compare double fiber, single lambda PAM4, and BIDI options for optimal network

STAINLESS STEEL WIRE MESH

- Long-lasting and durable
- Comprehensive specifications
- Customized non-standard products



50G Optical Transceiver Modules , Broadex Technologies

These reliable and robust QSFP28 modules support high speed bit rates up to 50Gb/s over link distances up to 40km and can be offered with a choice of 1-lane



A Deep Dive into the QSFP28-100G-ZR4 Optical

Cost-Effectiveness: Provides a compelling data center interconnect solution that is more affordable than proprietary OEM modules, without



QSFP28-50G-LR Optical Transceiver Module

TARLUZ 50GBase-LR QSFP28 transceiver module is designed for 50 Gigabit Ethernet, it transmits over single mode fiber up to 10km. This 50G QSFP28

Cisco Compatible 100GBASE-ZR4 QSFP28 4 x 25G

Cisco Compatible 100GBASE-ZR4 QSFP28 Optical Transceiver Module (SMF, 1310nm, 100km, LC, DOM) The Cisco compatible QSFP28 optical transceiver





100G QSFP28 Transceivers: Types, Specs and How to Choose

A 100G QSFP28 transceiver splits 100G data into four 25 Gbps lanes, converts electrical signals into optical signals for fiber transmission, and reconverts received light into electrical data using NRZ

100GBASE-SL4 QSFP28 4 x 25G NRZ 850nm 30m

100GBASE-SL4 QSFP28 Optical Transceiver Module (MMF, 850nm, 30m, MTP/MPO, DOM) The QSFP28 Optical Transceiver Module is designed for use



Intel® Ethernet QSFP28 Optic

The QSFP28 SR4 transceiver is a high-performing module for SR optical links over OM4 MMF, and is ideal for short-range, multi-lane data communication, and interconnects applications.

100GBASE-ZR4 QSFP28 1310nm 80km (FEC) SMF

NADDOD 100G optical module is suitable for 100G Ethernet, 112G OTN OTU4, telecom, access networks, data center interconnects, service provider



QSFP28 Transceiver: Complete 100G Connectivity Guide (2026)

QSFP28 transceiver guide covering module types, pricing, compatibility, and deployment. Learn how to choose, deploy, and troubleshoot 100G QSFP28 optics.



100GBASE-ZR4 QSFP28 4 x 25G NRZ 1310nm 80km

The QSFP28 optical transceiver module is designed for use in 100GBASE Ethernet, providing throughput up to 80 km over single-mode fibre (SMF) using a



QSFP28 100G: Interoperability with 40G, 25G, & 10G

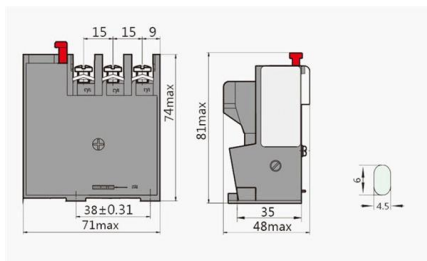
Overview of QSFP28 Optic Types Last Updated: November 2, 2022 A 100G QSFP28 optic fiber module is a hot-pluggable transceiver module with a





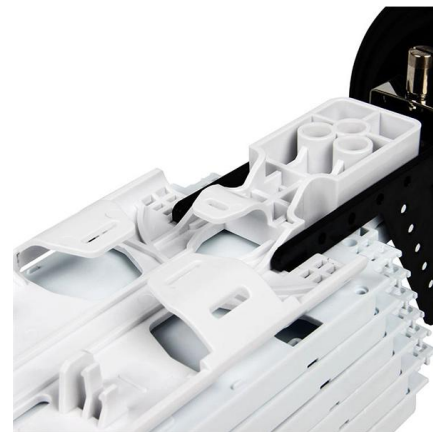
Customized 100GBASE-4WDM-40 QSFP28 4 x 25G NRZ 1310nm

Search now 100GBASE-4WDM-40 QSFP28 Optical Transceiver Module (Industrial, SMF, 1310nm, 40km, LC, DOM) The 100GBASE-4WDM-40 QSFP28 transceiver supports up to 40km link lengths



QSFP28 Transceiver: The Ultimate 100G Optical

Discover ascentoptics about QSFP28 transceiver solutions. Master 100G optical modules with in-depth insights and trusted guidance.



HPE Aruba JL309A Compatible 100GBASE-SR4 QSFP28 4 x 25G NRZ

The HPE Aruba JL309A Compatible QSFP28 Optical Transceiver Module is designed for use in 100GBASE Ethernet throughput up to 70m over OM3 and 100m over OM4 multimode fibre (MMF)



100G QSFP28 Transceiver Modules , Optical

FS offers a growing portfolio of 100G QSFP28 modules. The 100G QSFP28 module solution provides high-performance 100GbE connectivity for data centres,



What is QSFP28 optical module and how it works

The full name of QSFP28 optical module is 100G optical module, which is one of the popular and mainstream 100G optical modules on the market. Due to its low power consumption and

40/100GBASE-SM4 SWDM4 QSFP28 Dual Rate 4 x

40/100GBASE-SM4 SWDM4 QSFP28 Dual Rate Optical Transceiver Module (Dual Rate, MMF, 850/880/910/940nm, 100m, LC, DOM) The 40/100GBASE-SM4





100G-QSFP28-Mobile Networking

These products feature four channels of 25G NRZ electrical signals and four channels of 25G NRZ optical signals, a duplex LC connector, a distance of up to

Contact Us

For datasheets, pricing, or custom telecom energy solutions, please visit:
<https://www.koskolong.co.za>