



Adam Tas Corridor Energy

Norway Long Distance Optical Cable G 652D





Overview

652D fiber, which provides low attenuation and excellent transmission characteristics, making it suitable for long-distance applications. The 48FO BRUclean® 300+w Corrugated Armoured Cable is designed for high-performance fiber optic communication in demanding environments. 652 fibre was originally optimized for use in the 1310 nm wavelength region, but can also be used in. ARTIC ensures a stable quality control system for our cable products through several programs including ISO 9001, ISO 14001 and ROHS.



Norway Long Distance Optical Cable G 652D



G.652D Optical Fiber: Specifications, Price Factors

In the backbone of global communication networks lies a critical component: G.652D optical fiber. As the most widely deployed single mode fiber

Ficha_AR-1-FADPE-ADSS-60M-xxF-G652D

This Specification covers the design requirements and performance standard for the supply of optical fibre cable in the industry. ARTIC ensures a stable quality control system for our cable products



ITU-T Rec. G.652 (11/2009) Characteristics of a single-mode optical

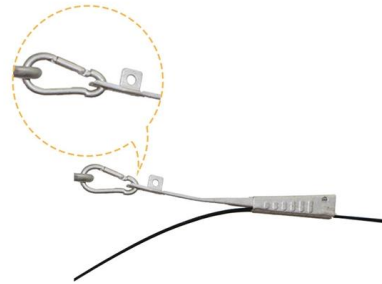
Recommendation ITU-T G.652 describes the geometrical, mechanical and transmission attributes of a single-mode optical fibre and cable which has zero-dispersion wavelength around 1310 nm.

Norway OPGW DUAL TUBE 96 G.652D-13.9mm 26042018

The document provides specifications for an OPGW cable including the cable type, cross



section, structure, fiber specifications, color coding system, and technical



Selection of different ITU-T G.652 cabled -fibers in optical fiber networks

Abstract The selection of right fiber or cable in network deployment is very critical due to high deployment costs. In this paper, various operational factors affecting 100G transmission over

G.652 vs G.655 Single Mode Fiber Comparison

Choose G.652D for standard access or FTTH networks needing cost efficiency and wide interoperability; choose G.655 for long-distance,



G652D vs G657 Fibers: Key Differences in Bend

G652D remains the workhorse for long-haul networks, while G657 variants excel in tight-space applications. Contact Us: For custom fiber optic





Optical Fiber Single-Mode Fiber G652.D (008)

"Leviton is dedicated to designing, developing and manufacturing sustainable high performance structured cabling and specialty cabling solutions." The information contained in this document is



What Is G.652 Fiber? G.652 vs G.652.D, G.652 vs

ITU-T G.652 optical fiber is the most widely used single mode fiber among all the 19 SMF types, which is also called standard SMF. G.652 vs G.657.

G.652D Optical Fiber: Specifications, Price Factors

G.652D Optical Fiber: Specifications, Price Factors & Reliable Manufacturer Guide In the backbone of global communication networks lies a



AR-1FD-FIG8-PE-xxF-G652D

1.3 Life Time Optical fibre cables supplied in compliance with this specifications is capable to withstand the typical service condition for a period of twenty-five (25) years without detriment to the operation



Differences Between G.652, G.655, and G.657 Fiber Types

G.652, G.655, and G.657 are ITU-T standardized singlemode fiber types used across long-haul, metro, ODN, and FTTH networks. Each fiber type is



48FO BRUclean® 300+w corrugated, armoured cable

Featuring 48 optical fibers, this cable utilizes G.652D fiber, which provides low attenuation and excellent transmission characteristics, making it suitable for long

G652D vs G657A1, G657A2, G657B2/B3 - Single-mode

These fiber optic cable types are used to bridge longer distances in LAN cabling and in FTTH systems. G652D VS G657A1 A major difference





Microsoft Word

No point discontinuity greater than 0.05 dB at 1310 nm and 1550 nm.



A Comparison of Single Mode Fiber: G.652 vs. G.655

Single mode fiber optic cables are widely used for long-distance communication due to their ability to transmit data over greater distances with



UnitekFiber Spec for Optical Fiber Cable SM G652D Duct and Direct

This Specification covers the design requirements and performance standard for the supply of optical fibre cable in the industry. UnitekFiber ensures a stable quality control system for our cable products

ITU-T Rec. G.652 (11/2009) Characteristics of a single-mode optical

Characteristics of a single-mode optical fibre and cable Summary Recommendation ITU-T G.652 describes the geometrical, mechanical and transmission attributes of a single-mode optical fibre and



OPTICAL CABLE OPTIC-LAN-AR 12F SM G-652D NR

Optical cable constituted by a single central tube with up to 12 optical fibers of maximum capacity. An inner jacket is applied over the loose tube and dielectric yarns.



6 Core Optical Fiber cable

Buy 6F Fiber Metallic Armored OFC cable at best price (Optical Fiber Cable) for high-speed, long-distance communication with extra protection. Perfect for



TRIPLE JACKET GALVANIZED STEEL WIRE ARMoured

This single mode type fibre optic cable is constructed for underground application. The fibre cores shall be identical and capable of transmitting either data or voice signals.





24 Core Outdoor Armored Double Jacket Fiber Optic Cable

24 Core Fiber Optic Cable GYTY53 Outdoor Armored Double Jacket Waterproof Gel Filled loose tube direct burial GYTY53 fiber optic cable is the type of fiber optic



Characteristics of G.652 Optical Fiber

When revising the G.652 optical fiber standard, it is hoped that the characteristics of the G.652 optical fiber will be comprehensively improved. At least 10Gbit/s long-distance applications

What Is G.652 Fiber? G.652 vs G.652.D, G.652 vs

G.652 fiber is designed to have a zero-dispersion wavelength near 1310 nm, therefore it is optimized for operation in the 1310nm band and can also



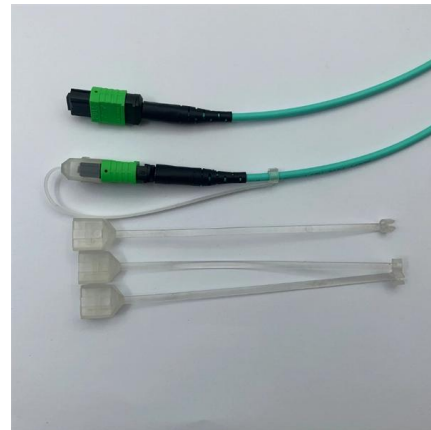
G.652

G.652 was originally developed in 1984 by ITU-T Study Group XV. Subsequently, revisions were published in 1988, 1993, 1997, 2000, 2003, 2005, 2009, 2016, and 2024 (from 1997 as Study Group 15).



What is G652D Fiber Optic?

In summary, for long transmission distances exceeding 100 km (like LAN and MAN) and with cable curvature radii greater than 25 mm, the G652D



G652D vs. G657A2

The SFP28 LR transceiver for 25 Gbps Ethernet transmits data over single-mode fiber optic cables over long distances of up to 10 kilometers, such as in data centers, telecommunications

FS Community

Hier sollte eine Beschreibung angezeigt werden, diese Seite lässt dies jedoch nicht zu.





Contact Us

For datasheets, pricing, or custom telecom energy solutions, please visit:
<https://www.koskolong.co.za>