



**Adam Tas Corridor Energy**

# **On which floor is it reasonable to place the electrical distribution box**





## Overview

---

Choose the right box based on environment (indoor/outdoor), load capacity, and durability.



## On which floor is it reasonable to place the electrical distribution board

---



### Your expert guide to floor box installation

This guide focuses on providing electricians and contractors with best practices and tips for floor box installation, ensuring compliance with British standards.

### Electrical Panel Mounting Requirements (Dictated by the

Looking to transfer your electrical panel to a new place? Perhaps you want to put it somewhere inconspicuous - in a closet or in the bathroom.



### Distribution Boards

Distribution boards, often referred to as electrical panels or breaker boxes, serve as the nerve center of any electrical system. Here we explore the crucial parts of a distribution board and gain insights into

### Are There Restrictions On Where To Mount A

The rules and restrictions on the placement of circuit breaker boxes are meant to make the



installation safe, and that includes common-sense



## Understanding Distribution Boxes: A Comprehensive Guide

A distribution box, also known as a power distribution box or electrical distribution box, is used to distribute electrical power safely to multiple



### How to confirm whether the installation location of the

Ensuring that the installation location of the box is reasonable is the basis for ensuring the safe and efficient operation of the system. The following are



### Wall-Mounted vs Floor-Mounted Distribution Boxes

Do distribution boxes that are placed on the floor need a special base or leveling? Yes, they do need floors that are flat and strong enough to hold heavy loads.





## Electrical System in Buildings

A basic discussion of the electrical system in buildings including distribution in small and large buildings.



## How to Install a Cable Distribution Box Safely and

Box installation: Place the cable distribution box on the installation surface, align with the expansion bolt position, and tighten the screw firmly.



## Designing and Building an Electrical Panel Part 2:

For bottom entry, the floor can incorporate a trench or false floor, which is often simpler since it provides easier access to the bottom. Additionally,

Focus creates quality products



## Distribution Boxes Types - The Complete Guide

The power distribution boxes deliver electricity from the main electrical main to other circuits. Several distribution boxes are designed for specific use in



## Electrical Panel Location Rules , Angi

Your electrical panel needs at least 3 feet of clearance in front with room for the door to open 90 degrees, keeping your access safe and



## Where is the best place to put a Electrical distribution box?

The box should be located in an area where it can accommodate the necessary wiring and circuit breakers to handle the electrical load of the system. Essentially, the location should be

## Wall-Mounted vs. Floor-Mounted Distribution Boxes:

Compare wall-mounted vs. floor-mounted distribution boxes. Learn their key differences, uses, pros & cons to choose the right one for your space





## Floor Electrical Box Layout Wrong? 5 Placement Fixes

In general, floor electrical boxes should be placed in locations that are practical for users and do not obstruct movement. Common locations for these boxes include areas near furniture,

## The Complete Guide to Distribution Box: Installation, Types & More

Blog The Complete Guide to Distribution Box: Installation, Types & More By Admin Aug 2, 2025  
No Comments # distribution box Introduction  
Electrical systems power our homes, offices, and



## Everything About Distribution Boards

Many electrical codes deem that they must not be placed at an inconvenient height of 2200 mm above the floor. It is preferable to install it in an

## Requirements And Specifications For Installation Of

The bottom edge of the distribution box is usually between 1.5 meters and 1.8 meters above the ground, which is convenient for operation and



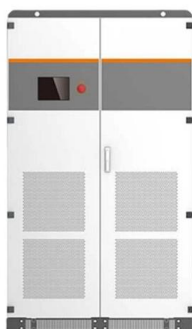
### **Where is the best place to put a Electrical distribution box?**

Additionally, if the box is located in an area with high humidity or moisture, it is important to take steps to mitigate these effects - consider using cooling fans and dehumidifiers to ensure your



### **Specifying and installing floor boxes**

A floor box that is perfectly suited to a carpeted office space may not perform adequately in a workshop or retail environment, so understanding the



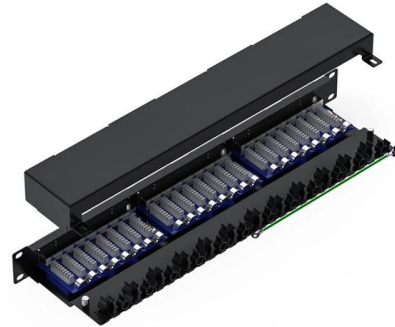
### **What should the distance be between the floor and the**

What should the distance be between the floor and the distribution board or main switch? Find out from our team of experts on Your Questions Answered by



## Distribution of Electricity in Multi-Storey Building

This has been illustrated in figure 5.6. Figure 5.6 - Distribution of electricity in a 4-story building When a supply company (WAPDA etc.) provides



## How to Choose the Right Location for Your Electrical

Electrical panels cannot be placed anywhere near the material that ignites easily for instance clothes closets. The Best Electrical Panel Locations

## Installation points of household distribution box

The distribution box of household distribution box should not be installed too high. Generally, the installation elevation is 1.8m to facilitate operation; the electric pipe



## What is the Ideal Installation Height for a Distribution Box

Install a distribution box at 4.5 to 5.5 feet high for safety, accessibility, and compliance. This height ensures easy use and protection from hazards.



## Contact Us

---

For datasheets, pricing, or custom telecom energy solutions, please visit:  
<https://www.koskolong.co.za>