



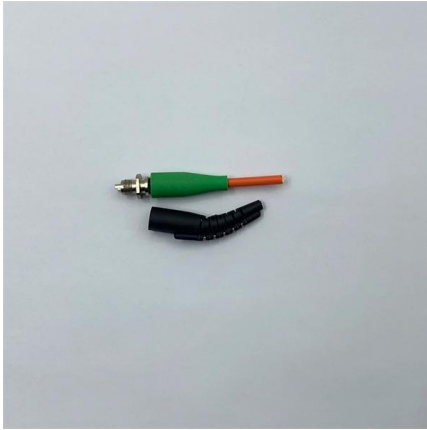
Adam Tas Corridor Energy

Optical Distribution Box Pigtail





Optical Distribution Box Pigtail



Optical Distribution Box ODB54

The Telegärtner ODB 54 wall distributor enables you to solve various installation demands with one product. Whether it will be used as splice storage or as distributor housing, there is enough space in

OPTIVIEL DISTRIBUTION BOX

16 Pigtails G652D 1m & 16 SC/APC Adapters (OPVL-DP-1204) Rp. Spesifikasi product: Distribution Point FttH Box (DP) is designed for use in residential and



Optical Distribution Box ODB24 MCM max 24 pigtail

It has been designed to serve as a building entry point for FTTH applications but is also a perfect choice for all types of FTTH applications. The 12-24 fiber box



HAILE 8 Optical Fiber Termination Box P1-8-FC 8-Core FC Full

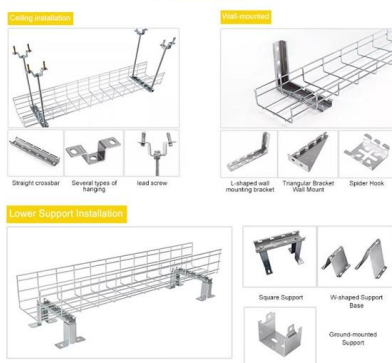
The box includes dedicated splice trays for cable pigtail splicing, providing an organized and



protected environment for fiber optic connections. With its compact and rugged design, it can be mounted in



INSTALLATION METHOD



Fiber Optic Distribution Boxes (FDB) & ODF Supplier

OTRANS is a leading fiber optic distribution box manufacturer. We offer a wide range of 1-24 core FDB boxes and ODF cabinets for indoor/outdoor FTTX deployment.

HJ FTTH Fiber Distribution Box 24 Core IP65 Wall Mount Optical

Protection level IP55 Adapter/pigtail 12-core fiber optic adapter can be installed Optical splitter meets box-type optical splitter 1:4, 1:8 Enclosure Material



FC UPC Fiber Optic Pigtail

Fiber optic pigtail provides a fast way to link communication devices, mostly used to terminate fiber optic cable by fusion or mechanical splicing. And the pigtails are



2 core fiber optic distribution box (termination box Suitable for SC

General Description FBR-11604 2 core fiber optic distribution box (termination box Suitable for SC and LC duplex adaptor and pigtail)



Fiber optic Distribution box, 4 SC/APC adapters and

Indoor wall-mount FTTH Fiber Distribution Box for termination of fiber optic cables, with pre-assembled single mode 4 SC/APC adapters and pigtails.

Fiber Optic Cables, Patch Panels & Networking Products

Shop high-quality fiber optic cables, patch panels, adapters & networking solutions. Fast US shipping, bulk pricing, and reliable performance.



optical fiber Wall-mounted Terminal distribution Box with

The Fibercloud wall-mounted terminal boxes are used for fiber/cable termination and distribution. They are suitable for connecting all kinds of cables and pigtails, and



PNGKNYOCN 8 Port Fibre Optical Terminal Junction Box, Compact

Adapters in the wiring box lead out optical signals using optical jumpers to achieve optical wiring functions. Suitable for the protective connection of fiber optic cables and cable pigtails as well as for



24 Fibers Sliding Rack Mounted Fiber Optic Terminal

24 Fibers Rack Mounted Fiber Optic Terminal Box
The Fiber Optic Terminal Box is a kind of fiber optic management product, used to distribute and protect the optical

BISMON 48 Core ODF Fiber Optic Patch Panel Indoor

BISMON 48 Core ODF Fiber Optic Patch Panel Indoor Wall Mount Enclosure Box Optical Distribution Frame (Full Set with SC/UPC Pigtail, Adapter, Splice Tray,





ODF Optical Distribution Frame 12 Core LC/UPC

ODF Optical Distribution Frame 12 Core LC/UPC Coupler With Pigtail Optical Fiber Splicing Tray,ODF,Distribution Box,ODF

ST UPC Fiber Pigtail

ST upc fiber pigtail cable is available,we offer single mode and multimode fiber optic pigtails with sc/LC/FC/ST/E2000 connector, Free sample in stock!

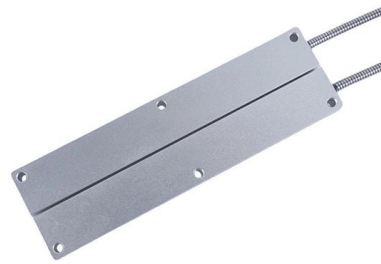


What is a Fiber Optic Pigtail, and What Is It Used For?

Fiber optic pigtails are commonly encountered in fiber optic management equipment such as an ODF (optical distribution frame), a fiber

Optical Distribution Box

It is used between the trunk cable optical distribution cabinet and the fiber distribution box to solve the problem of insufficient number of cables in the trunk transfer box and extends the trunk cable to the



Dinrail Distribution And Enclosure Box, Din Rail Junction

The DIN rail terminal box is mainly used for connection and storage between optical fiber and cable and equipment pigtail, which can meet the customer's use in the



Cable structure

12 Port Fiber Patch Panel SC FC LC Pigtail ODF 1U

12 Port Fiber Patch Panel SC FC LC Pigtail ODF 1U Optical Fiber Terminal Box Optical Fiber Distribution Frame Warranty : This is a consumable without



ODF-E-72 4U optical distribution frame 72 Cores -AOA

72 Cores Optical Distribution Frame Overview Fiber Management Tray also called ODF Distribution Box, Integrated Splicing and Distribution ODF. It is mainly used



Fiber optic DIN rail splice box for LC or SC couplers

DIN rail termination and distribution box Empty box, for installation of pigtails and couplers Including splice cassette and fibre tray With 4 replaceable shrink splice



FTTH Fiber Distribution Box , 4 Port Splitter Box with 4 SC

About this item Suitable for the distribution frame of optical cable and optical communication equipment. Through the adapter in the distribution box, the optical signal is led out by the optical jumper to

12 Port Fiber Patch Panel SC FC LC Pigtail ODF 1U Optical Fiber

12 Port Fiber Patch Panel SC FC LC Pigtail ODF 1U Optical Fiber Terminal Box Optical Fiber Distribution Frame \$39.00 \$37.00 Sale



Contact Us

For datasheets, pricing, or custom telecom energy solutions, please visit:
<https://www.koskolong.co.za>