



Adam Tas Corridor Energy

Optical Module Fault





Overview

If the fault is caused by the configuration or environment, advise the customer to optimize the configuration or environment. An optical module is a critical component in modern optical communication systems, directly affecting transmission stability, network reliability, and operational efficiency. If it is not a Huawei-certified optical module, replace it with a Huawei-certified optical module. This article will help you understand various warning signs for common faults, suggest practical troubleshooting steps, and share preventive inspections and maintenance, so you can do your due diligence in keeping your network safe with high availability.



Optical Module Fault



Summary of common problems in the use of optical modules

First, what are the common problems in the use of optical modules? 1, the causes of compatibility problems: A. Errors in the process of compatibility code import; B, the software update

Optical Module Application: Common Problems & Troubleshooting

Based on typical issues encountered with optical modules in daily switch applications, this document summarizes basic troubleshooting steps for resolving common faults:



Analyzing Abnormal Situations During Installation and Use of Optical Module

As core components of optical communication systems, the proper installation and use of optical modules directly impacts network stability. This article systematically identifies common

Demystifying Optical Transceiver Failures: Common

Understanding the most common failure modes of optical transceivers is crucial for network



engineers and IT professionals to maintain optimal network



Optical Module Common Problem and Maintenance Method

The module includes TOSA, ROSA and PCBA, in which only TOSA is metal and is connected to the shell. To replace the TOSA; then to observe whether it is short circuit.



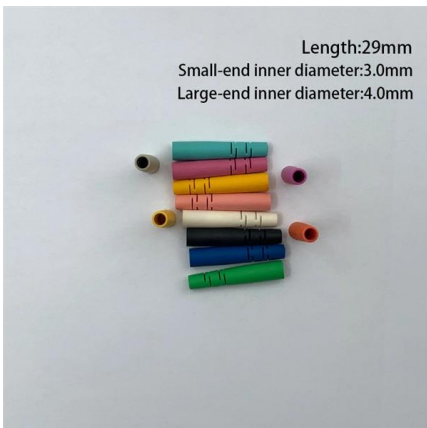
The Common Issues of Optical Transceivers and How to Diagnose

Learn the most common optical transceivers issues and practical diagnosis methods to easily troubleshoot optical link faults.



port is disconnected due to optical module faulty

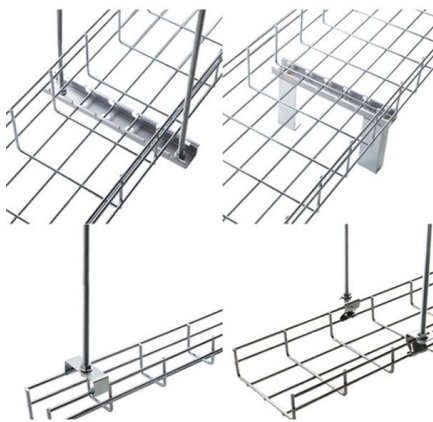
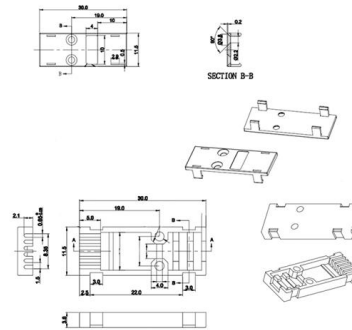
Use the idle optical module on the storage device to exchange with PO and check whether the fault is rectified. If the fault persists, it indicates that the optical module is not faulty.





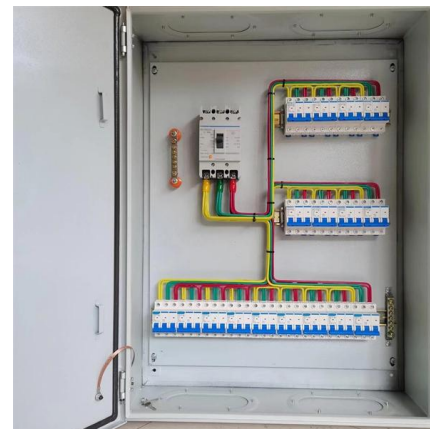
optical module Troubleshooting and Common Problems

Conclusion: Reducing Optical Module Failures Through Knowledge and Quality By thoroughly understanding common optical module problems and



Main Causes and Solutions for Optical Transceiver Module Malfunction

Missing conductive metal on the gold fingers of the optical fiber transceiver module: Missing gold fingers can cause the optical fiber transceiver module to malfunction. The conductive metal on substandard



How to judge the failure of the optical module

The use of optical modules can be said to be extremely familiar to hardware engineers, but we often encounter some small problems when using optical modules, such as the failure of optical



Typical Troubleshooting Cases of Optical Module

Take corresponding troubleshooting measures based on the fault causes. If the optical module is not a Huawei-certified one, replace it with a Huawei-certified optical module. If the optical module is faulty,

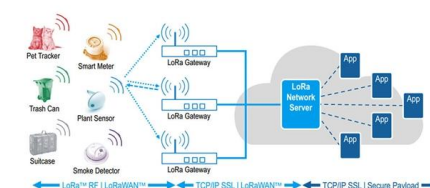


Optical Module Failure Diagnosis and Prevention:

A comprehensive guide on Optical Module Failure diagnosis and prevention to maintain network stability through effective troubleshooting,

Optical module common faults and solutions

In this article, we will focus on teaching you how to troubleshoot and solve the common three categories of optical module failure. First, the transmission class of the optical module fault



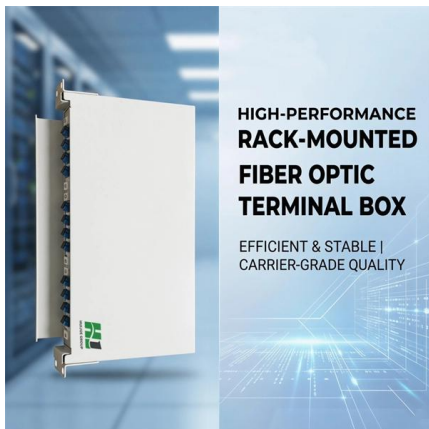


How to solve when the optical module fails?-fiberwdm

During the use of the optical transceiver module, various problems will inevitably occur. The following summarizes the main reasons and solutions in the event of failure. Matters n

Optical Module Common Failure Of Optical Power

The article Digital Diagnostic Function (DDM) For Optical Modules describes that DDM function can be used for real-time monitoring and fault location of the



The reason of optical module fault and the method to

Other colors are single-mode optical modules 2. Self-loop inspection The light emitted by the general multi-mode optical module is visible light, which can be

optical module Troubleshooting and Common Problems

optical module troubleshooting guide covering common faults, compatibility issues, optical link failures, ESD risks, and practical solutions.



Common problems and solutions of optical module

The method of judging the fault of optical module
1. Look at the appearance by visual inspection
The appearance of the light module is observed



Analyzing Abnormal Situations During Installation and Use of Optical

As core components of optical communication systems, the proper installation and use of optical modules directly impacts network stability. This article systematically identifies common



Main causes of optical module failure and protective measures

Optical modules in the application must have standardized operating methods, any irregular action may cause hidden damage or permanent failure. The main reason for the failure of



16 Tips to Troubleshoot Your Optical Transceiver Issues

Optical transceivers are delicate devices and need to be handled with care. Following the tips above can avoid many common problems and ensure



Huawei Unveils StarryLink Optical Modules That Deliver

To address these challenges, Huawei's StarryLink optical modules deliver a high-quality network experience with three key capabilities:
Spanning:

Fault Analysis and Handling of Optical Modules

The daily use of optical modules may encounter various problems, and I do not know how to solve them. The following will introduce the causes of various problems and how to deal with them.



Troubleshooting and Repairing Optical Transceiver Failures in

SFP or SFP+ optical transceiver failure can happen in multiple recognizable ways. The most notable fault is the "module not detected" error, which describes a situation in which a switch



Demystifying Optical Transceiver Failures: Common

explores frequent optical transceiver issues and offers practical solutions, and highlight how LINK-PP optical module can mitigate risks.



Contact Us

For datasheets, pricing, or custom telecom energy solutions, please visit:
<https://www.koskolong.co.za>