



**Adam Tas Corridor Energy**

# **Optical aggregation switch SC16 port**





## Overview

---

The SONiC-based 16 port 25G aggregation switch with 4x100Gb QSFP28 uplinks, the low latency switch with Marvell Aldrin 2 chip, ROCEv2 & EVPN Multi-homing supported, Enterprise SONiC NOS Installed. LANCOM aggregation switches enable high-performance and hierarchical switch infrastructures to be set up and serve as the distribution basis for networking subordinate access switches. Equipped with future-proof fiber-optic and multi-Gigabit Ethernet (mGbE) ports as well as high-throughput uplink. DiCon's Optical Switching System (OSS) is an all-optical non-blocking cross-connect switch. This rack-mount device is designed with DiCon's proprietary 3D MEMS mirror technology and delivers industry-leading optical performance. The EX3024F Intelligent Ethernet Fiber Aggregation Switch offers zero-touch deployments, policy-based automation, auto device profiling and segmentation, and a non-blocking. Multi-gigabit optical aggregation series is my company based independent software research and development from a fiber aggregation switches, which have 16 \* 1000M optical ports and 2/4 \* 10/100 / 1000M adaptive Ethernet electrical interface.



## Optical aggregation switch SC16 port

---



### Switch Aggregation

An 8-port, Layer 2 switch made for 10G SFP+ connections.

### PASSIVE OPTICAL SPLITTER RG-SPL2016-SC 16

The RG-SPL2016-SC Passive Optical Splitter enables the distribution of optical signals from the OLT core-switches to end devices such as access points or ONU



### MEMS 16X16 OPTICAL SWITCHING SYSTEM

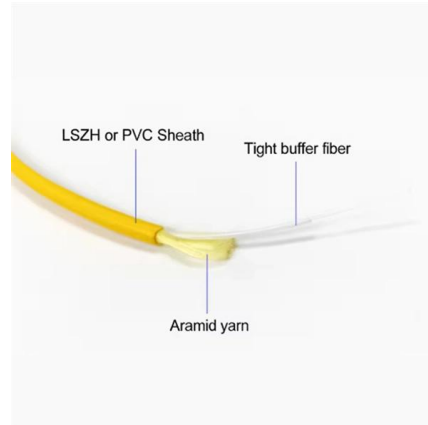
This rack-mount device is designed with DiCon's proprietary 3D MEMS mirror technology and delivers industry-leading optical performance. The unit works without any position sensor or feedback loop,

### MEMS 16X16 OPTICAL SWITCHING SYSTEM

OSS Model, Single Mode Fiber, Quantum Grade  
DiCon's Optical Switching System (OSS) is an all-



optical non-blocking cross-connect switch. This rack-mount device is designed with DiCon's



### **PEN Passive Aggregation Module**

This section describes the hardware of the PEN passive aggregation module. The PEN passive aggregation module, also known as passive optical splitter or passive multiplexer, splits and

### **cnMatrix EX3024F Fiber Aggregation Switch**

The EX3024F is a fiber aggregation switch that has all 10 Gbps SFP+ fiber ports. It also has dual internal power supplies for additional robustness and redundancy.



### **1x16 Mechanical Fiberoptic Switch**

1x16 Mechanical Fiberoptic Switch ACP's MS Series switch connects optical channels by redirecting an incoming optical fiber. This is achieved using a patent pending opto-mechanical proprietary



## SPECTRA AGGREGATION SWITCH

The Aggregation Switch supports all Ethernet-based protocols in use for security, building automation, and IoT, and is easily set up for redundancy with its auto-switching Active/Protect feature.



## Hanutech 1x16 SC/UPC Cassette Card Inserting PLC

Hanutech 1x16 SC/UPC Cassette Card Inserting PLC Splitter Module 1:16 Ports Fiber Optical PLC Splitter for Home Wiring, Engineering Projects, Fiber Optic

## PEN Passive Aggregation Module

When PEN remote optical modules are connected to ports on a passive aggregation module, they do not need to be paired based on wavelengths. That is, PEN remote optical modules (numbered from 1



## Dahua 8GE Combo + 16\*SFP ports + 4\*10G SFP+ L2

CCTV / Network Switches / DAHUA Network Switches / Access & Aggregation Switches Dahua 8GE Combo + 16\*SFP ports + 4\*10G SFP+ L2+ Managed



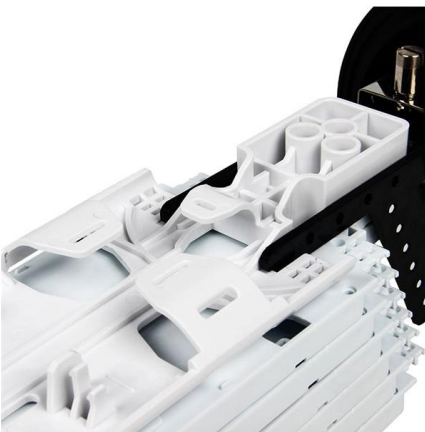
### 16 Fiber Port & 2GE Fiber & 2/4 UTP lan port Fiber optic Ethernet switch

Multi-gigabit optical convergence convergent series fiber optic switch is a photoelectric signal switch Gigabit Ethernet (Gigabit Fiber Switch) of electrical and optical signals multiplexed centralized



### 16 Port Fiber Optic Switch

Find 16 Port Fiber Optic Switch related suppliers, manufacturers, products and specifications on GlobalSpec - a trusted source of 16 Port Fiber Optic Switch information.



### 16-Port Fiber Patch Panel, 1U SC-SC, Multimode or

This 16-port 1U rack-mount SC/SC Fiber Optic Patch Panel provides efficient and easy management of fiber optic cables in the rack or cabinet. Pre-loaded, feed



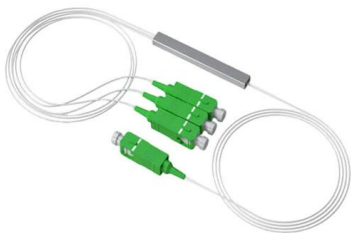


## SPECTRA AGGREGATION SWITCH

The Aggregation Switch (ONS-S8) works with the Network Controller (ONS-NC600) to quickly configure the network from Optigo OneView™. Configuring each switch for management, assigning ports the

## Aggregation Switches: LANCOM Systems GmbH

Equipped with future-proof fiber-optic and multi-Gigabit Ethernet (mGbE) ports as well as high-throughput uplink and stacking ports, they form the basis for efficient



## 1x16 MEMS Optical Switch

1x16 MEMS Optical Switch OPNETI 1x16 MEMS switch is based on MEMS technology . The component makes an optical connection between an optical port and either one of 16 input or output line. The

## 16-ports Full Gigabit L2 Unmanaged Fiber Switch OPT

OPT-6016 L2 Fiber Ethernet Switch provide 16-port 1000M SFP fiber ports, the SFP type is flexible according to user needing, such as 1000Base-T, 1000Base-SX,



### **16 Port 25G Aggregation Switch Enterprise SONiC NOS**

The SONiC-based 16 port 25G aggregation switch with 4x100Gb QSFP28 uplinks, the low latency switch with Marvell Aldrin 2 chip, ROCEv2 & EVPN Multi-homing



### **1x16 MEMS Optical Switch**

The component makes an optical connection between an optical port and either one of 16 input or output line. The highly reliable switching mechanism use integrated micromirrors and feautre below 1ms



### **MEMS 16X16 OPTICAL MATRIX SWITCH MODULE**

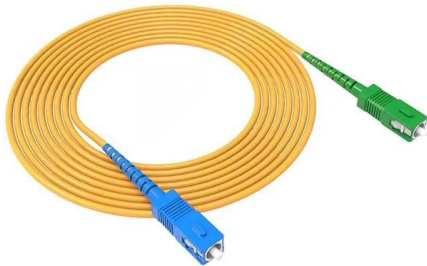
MEMS Optical Matrix Switch Module is built with DiCon's proprietary MEMS technology. Each module contains 2 sets of MEMS mirrors for making 1-to-1 connections between input and output ports.





## Switch, Fiber Optic, SC, 16-Port, 100Base-Fx, Rack Mount, Danpex

Cables4Computer - Switch, Fiber Optic, SC, 16-Port, 100Base-Fx, Rack Mount, Danpex Use this Fiber Optic Switch from Danpex to network computers. This 16 Port Fast Ethernet fiber optics switch



## AXIS D8308 Fiber Aggregation Switch

Developed for long distance fiber installations. Equipped with eight SFP+ ports, two additional SFP28 ports and one RJ45 console port for configuration. With AXIS

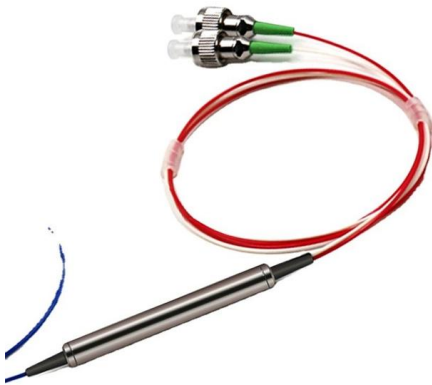
## Campus Switches RG-SF2920-16GT2SFP-P 16-Port GE All-Optical PoE Switch

RG-SF2920-16GT2SFP-P 16-Port GE All-Optical PoE Switch, 2 x Gigabit Uplink Optical Ports Various port combinations, rate increase, installation in a concealed telecommunication box, recommended



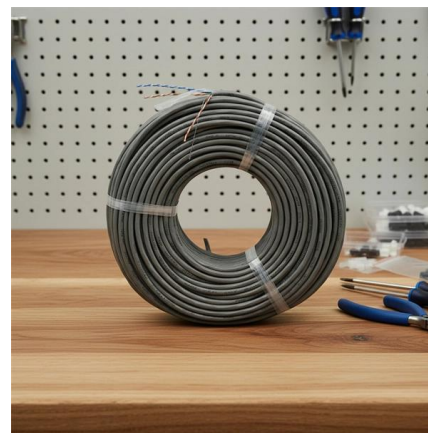
## 16 Ports Optical Terminal CTO/NAP Splitter BOX

16 Ports Optical Terminal CTO/NAP Splitter BOX Distribution Box Product Model SP-1604-16L Product Description Spring SP-1604-16M fiber distribution NAP box is



### **Dahua 8GE Combo + 16\*SFP ports L2+ Managed**

Code : NS-DH-AAS010 350Gbps switching capacity 35.7Mpps packet forwarding rate, suitable for <100 IPC Supports port aggregation, loop protection, VLAN,



### **Ruijie-Reyee RG-SPL2016-SC e- Lighten 16-Port SC PON Uniform Optical**

It provides PON ports that can be connected to e-Lighten access switches and e-Lighten access points (APs) to achieve data interconnection. e-Lighten access switch (ONU): As an access device, the e

### **Splitter Distribution Box 16 Ports with 8 SC/APC SM**

Equipped with 16 ports, including 2 inlet, 16 outlet, this fiber optic distribution box facilitates seamless connectivity for your fiber optic infrastructure. Pre-installed





## Contact Us

---

For datasheets, pricing, or custom telecom energy solutions, please visit:  
<https://www.koskolong.co.za>