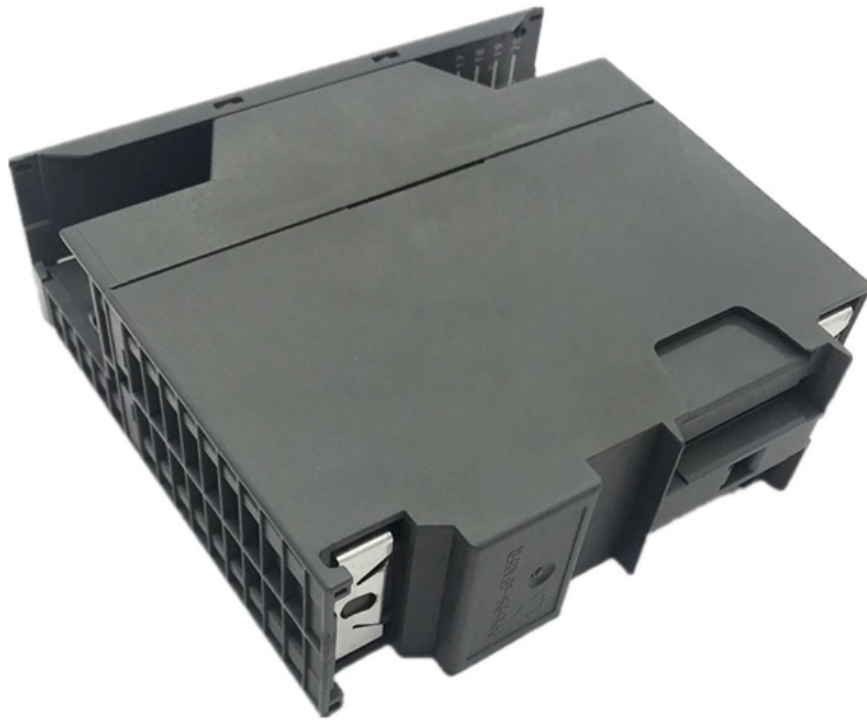




Adam Tas Corridor Energy

Optocoupler module 6mm





Optocoupler module 6mm



Optokoppler und Zubehör günstig kaufen , reichelt elektronik

Optokoppler Kategorien Fotodioden etc. (140)
Lasertechnik (220) LCD-Anzeigen / -Module (491)
LEDs (1630) Lämpchen (433) Sortieren nach:

Arduino Tutorial: HY-M154 / 817 / PC817

Tutorial on how to use HY-M154 / 817 optocoupler modules with Arduino. Includes wiring diagram and programming



Murr Elektronik MIRO 6.2 optocoupler module IN: 30 VDC

The MIRO 6.2 optocoupler module from Murr Elektronik is a highly advanced relay designed for reliable signal transmission in various applications. With an input voltage of 30 VDC and a maximum output

Optocoupler module 6mm, ultra slim rail mounting, 24VDC input, 5

Optocoupler module 6mm, ultra slim rail mounting, 24VDC input, 5-48V output,

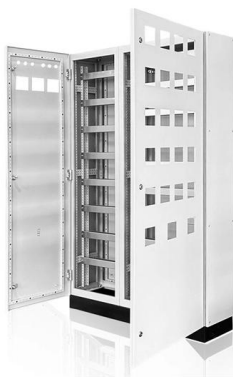


replacement, Wei, Demy, DKO series



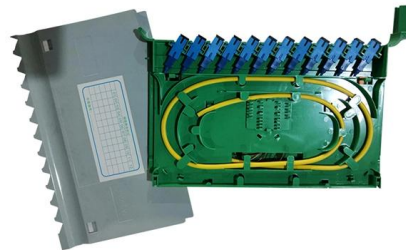
MIRO 6.2 pluggable Plug-in module Optocoupler IN: 24 VDC

Product-PDF for Article 3000-32522-2100040
MIRO 6.2 pluggable Plug-in module Optocoupler
IN: 24 VDC - OUT: 24 VDC / 6 A Transistor 6 A 24
V DC



Optocoupler module (859-744) , WAGO

Optocoupler module; Nominal input voltage: 12
48 VDC; Output voltage range 3 53VDC; Limiting
continuous current: 4 A; 2-wire connection;
Module width: 6 mm; gray (4055143605458) ,
WAGO



Optocoupler module (859-791) , WAGO

Optocoupler module; Nominal input voltage: 24
VDC; Output voltage range: 3 60 VDC; Limiting
continuous current: 0.1 A; 2-wire connection;
Railway; Red status





default dd

Optocoupler module; Nominal input voltage: 24 VDC; Output voltage range: 9 60

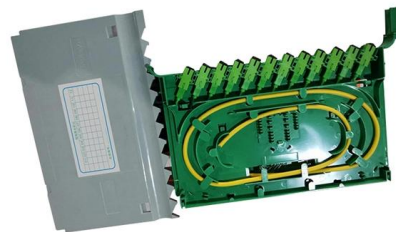


Weidmuller Optocouplers

Relay and optocoupler module Plug-in relay and optocoupler modules allow individual adjustment to function of the base module. Relay and optocouplers, are available with different power outputs, with

Optocouplers and accessories at a favourable price , reichelt elektronik

Product#: 4N 35 Optocoupler, phototransistor output, 5 KV, CTR 100%, DIP-6 Type Optocoupler Design Photo transistor Model 1-fold Current Transfer Ratio (CTR) 100 % CTR 100 % Mounting form DIP-6



Optocoupler module; Nominal input voltage: 12 48 VDC; Output

Optocoupler module; Nominal input voltage: 12 48 VDC; Output voltage range 3 53VDC; Limiting continuous current: 4 A; 2-wire connection; Module width: 6 mm; gray



Optocouplers Optokoppler / Photokoppler - Mouser Deutschland

Smart Filter Wenn Sie mindestens einen parametrischen Filter auswählen, deaktiviert Smart Filtering alle nicht ausgewählten Werte, die verursachen, dass keine Ergebnisse gefunden werden.



Optocouplers/Photocouplers - Mouser Europe

Mouser offers inventory, pricing, & datasheets for Optocouplers/Photocouplers.



Optocoupler & Optocoupler-Solid State Relay

Available with 6 to 16 pins Configured as surface mount or thru hole devices Optical and on-chip galvanic isolation Solid state relay-optocoupler modules allow





859-730 , WAGO , Series Terminals , Bürklin Elektronik

Optocoupler module, Nominal input voltage: 24 VDC, Output voltage range: 3 - 30 VDC, Limiting continuous current: 3 A, 2-wire connection, Module width: 6 mm, gray.

Optocouplers / Photocouplers - Mouser

Optocouplers / Photocouplers Optocouplers (also called Photocouplers, Optoisolators, and Optical Isolators) are available at Mouser Electronics from industry leading manufacturers. Mouser is an



Murr Elektronik MIRO 6.2 optocoupler module IN: 30 VDC

The MIRO 6.2 optocoupler module from Murr Elektronik is a highly advanced switching relay designed for reliable signal transmission in various applications. With an input voltage of 30 VDC and a

Optocoupler module; Nominal input voltage: 24 VDC; Output voltage

Optocoupler module; Nominal input voltage: 24 VDC; Output voltage range: 3 30 VDC; Limiting continuous current: 5 A; 2-wire connection; Module width: 6 mm; gray



- IP65/IP55 OUTDOOR CABINET
- WATERPROOF OUTDOOR CABINET
- 42U/27U
- OUTDOOR BATTERY CABINET

859-752_EN

VDC; Limiting continuous current: 0.5 A;
Frequency: 10 kHz; Module width: 6 mm;



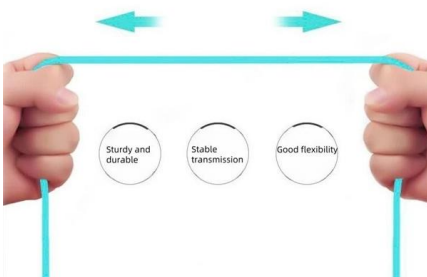
Isolating Circuits From Your Arduino With Optocouplers

Isolating Circuits From Your Arduino With Optocouplers: A Optocoupler also called a photocoupler, optical isolator or opto-isolator is a small chip that transfers signals



More durable and robust

The outer layer is made of environmentally friendly PVC, which is soft and elastic. It can be stretched without damage, so you can use it with confidence.



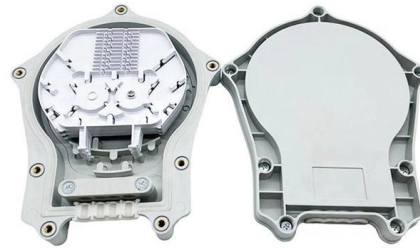
859-734 , WAGO Optocoupler Module 24VDC 1a 0,5A

859-734 WAGO - Optocoupler Module 24VDC 1a 0,5A 230VAC, ZC, W=6mm,



Data sheet , Item number: 859-795 Optocoupler module; Nominal

Data sheet , Item number: 859-795 Optocoupler module; Nominal input voltage: 5 VDC; Output voltage range: 3 30 VDC; Limiting continuous current: 0.1 A; 2-wire connection; Frequency: 10 kHz;



859-758_EN

VDC; Limiting continuous current: 0.5 A;
Frequency: 10 kHz; Module width: 6 mm;

Optokoppler , Optokoppler kaufen , Optocoupler , RS

Unsere Optokoppler sind mit verschiedenen Ausgangsschaltungen erhältlich, darunter Phototransistor, Phototriac, Triac und Transistor. Diese Varianten ermöglichen eine flexible Anpassung an



Contact Us

For datasheets, pricing, or custom telecom energy solutions, please visit:
<https://www.koskolong.co.za>