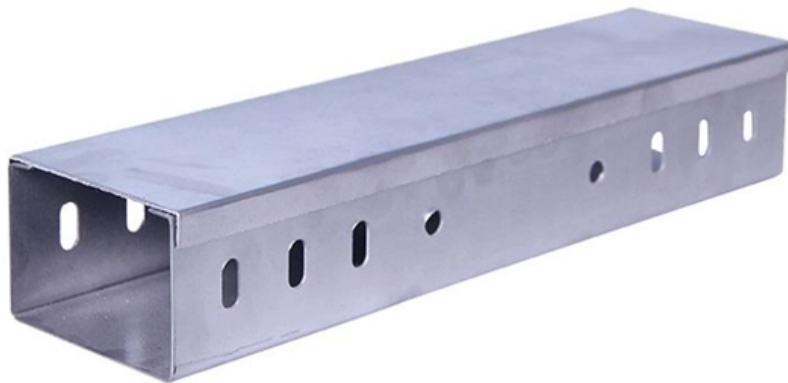




Adam Tas Corridor Energy

Outdoor optical cables do not require optical terminal boxes





Outdoor optical cables do not require optical terminal boxes

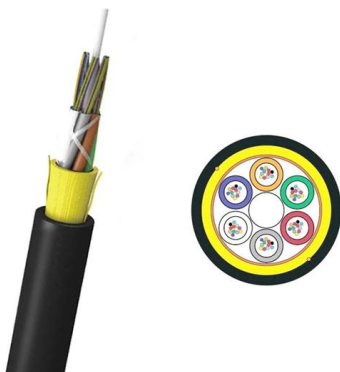


Optical Boxes

Optical Boxes FOLAN optical boxes allow the connection of cables for distribution to other cables or active equipment. They do not require the use of a rack and can

Indoor or Outdoor ONTs?

Cons for Outdoor ONTs If not installed properly the ONTs can allow in water or dust and invite corrosion. But if installed properly this should not be an



How to Install Outdoor Fiber Optic Cable: Tips and Best

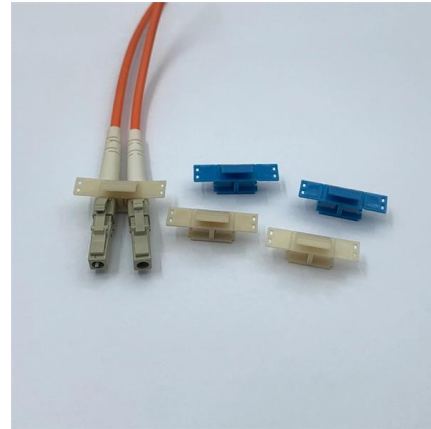
This article details outdoor fiber optic cable types, selection criteria, and professional installation guidelines. It focuses on how to choose durable cables for different

Fiber Terminal Box vs Junction Box: Key Differences

The fiber optic terminal box includes the outer shell, internal components (support frame, fixed

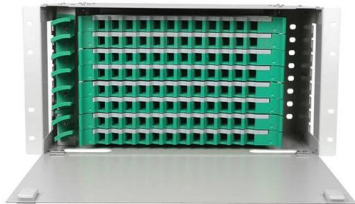


fiber tray, clamp), and fiber optic connector



Termination Box For Fiber Optic Cable

Outdoor fiber optic cables connect to a termination box where their fibers are fused with pigtails, which are then led out via patch cords. Patch cords connect to an



The FOA Reference For Fiber Optics

The fiber optic contractor should be able to work with the customer in each installation project through six stages: design, installation, testing,



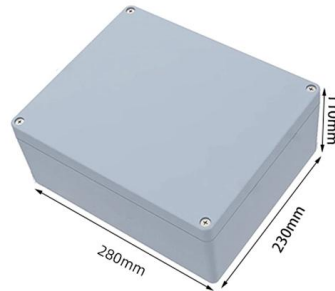
Outdoor Fiber Optic Cable: Installation & Selection Guide

Outdoor fiber optic cable guide: loose tube vs tight buffer, direct burial vs aerial, UV-resistant jacket, temperature ratings. IEC 60794 standards and selection criteria for OSP deployments.



The Future of Fiber Optic Outdoor Terminal Distribution

FTTx networks heavily rely on fiber optic outdoor terminal distribution boxes to efficiently deploy fiber-optic cables and ensure seamless fiber



All You Need To Know About Fiber Termination Boxes:

In network cabling, outdoor connections generally use fiber optic cables. When these optical fibers are installed or laid out, a Fiber Termination

Fiber Termination Boxes: A Beginner's Guide to

Outdoor FTBs: Built to withstand harsh weather conditions, these boxes are weatherproof and designed for outdoor installations, ensuring the



What You Need to Install Fiber-Optic Internet

Safety tip If your optical network terminal has loose fiber connectors, do not look into the end of the connector as this can cause eye damage. Refer to



Standard for Installing and Testing Fiber Optics

Although most fiber optic cables are not conductive, any metallic hardware used in fiber optic cabling systems (such as wall-mounted termination boxes, racks, and patch panels) must be grounded.



The FOA Reference For Fiber Optics -Outside Plant

Typically, optical fiber cables do not carry electrical power, but the metallic components of a conductive cable are capable of transmitting current. When the

FOA Standard For Installing Fiber Optic Cable Plants

Although most fiber optic cables are not conductive, any metallic hardware used in fiber optic cabling systems (such as splice closures, pedestals, messenger wire, wall-mounted termination boxes,





Indoor & Outdoor Fiber/Ethernet Cabling Regulations

Learn the critical regulations for indoor/outdoor fiber and Ethernet cabling installations. This guide covers NEC compliance, cable ratings, proper



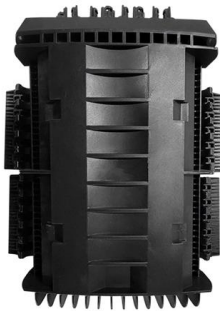
Understanding Outdoor, Indoor, and Indoor/Outdoor

Indoor/outdoor optical fiber cable, also known as universal indoor/outdoor cable, is a type of cable designed to be used both outdoors and



What is Fiber Termination Box

A Fiber Termination Box (FTB), also known as an Optical Terminal Box (OTB), is a crucial component in Fiber to the Home (FTTH) applications. Its



Indoor vs. outdoor ONT: Where to does an optical

Learn the key differences between indoor and outdoor ONT installations. Discover expert tips to choose the right placement for reliable,



Fiber Terminal Boxes: What They Are and Why You

A fiber terminal box, is a device used in fiber-optic communication networks to terminate, splice, and distribute optical fibers. It is a small enclosure



Customer-Owned Outside Plant Design Manual Telecommunications

Where the cable route crosses railroad right-of-way, the cable shall be placed at a minimum depth of 60" below the railroad surface or 36" below the parallel drainage ditch, whichever is greater, unless the



The FOA Reference For Fiber Optics

Outside Plant Fiber Optic Cable Jump To: Fiber Optic Cable Construction Fiber Optic Cable Types Cable Design Criteria Choosing Cables Cable Types: (L>R):





Common laying methods and requirements of outdoor

There are three common laying methods for outdoor optical cables, namely: underground pipeline laying (that is, laying optical cables in underground



Outdoor Fiber Installation Practices Explained for 2025

By following these steps and precautions, you ensure your outdoor fiber optic cable installation will withstand extreme weather, soil corrosion, and

A Practical Guide to Choosing Outdoor Fiber Optic Cables

Discover the best outdoor fiber optic cables for your network needs. Learn about different cable types, including loose tube, aerial, and armored



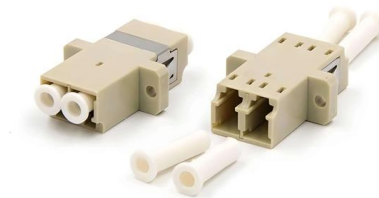
101 Guidelines for Fiber Termination Box

Fiber termination box (FTB), also known as optical terminal box (OTB), generally refers to a distribution box specially designed for fiber cable



Indoor and Outdoor Fiber Optic Cable Installation: Key

This guide explores different types of fiber optic cable, including indoor fiber optic cable and outdoor fiber optic cable, and outlines best practices



Fibre Optic Cables for Indoors vs. Outdoors: What You

Outdoor fiber optic cables with enhanced UV resistance and moisture-proof coatings are increasingly sought after to meet the high durability



Fiber Optic Terminal Box Guide: Choosing the Right

Discover how to select the best fiber optic terminal box for data centers, campus fiber backbones, outdoor FTTH networks, and enterprise fiber





Contact Us

For datasheets, pricing, or custom telecom energy solutions, please visit:
<https://www.koskolong.co.za>