



Adam Tas Corridor Energy

Outgoing wires from air distribution box





Outgoing wires from air distribution box



Air Distribution Basics and Duct Design

Right-sizing of a heating, ventilation, and air-conditioning (HVAC) system is the selection of equipment and the design of the air distribution system to meet the accurate predicted heating and cooling loads

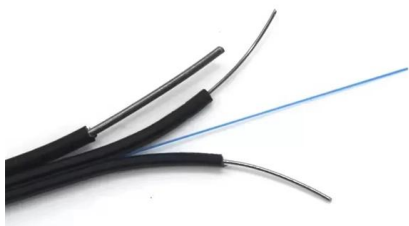
Designing for Supply and Return Air System Interaction in

Distributed ducted returns and systems with sufficient return air pathways eliminated airflow balance sensitivity regardless of supply system. Using a central return strategy can lead to significant cost



How to wire a DB - Distribution Board Wiring -

How to wire a DB - Distribution Board Wiring
Distribution Board or DB is an electricity supply system or a common enclosure that distributes the



How Do I Install The Disconnect Box For An Air

Cut enough conduit to reach from the disconnect box to the wiring panel on the air conditioning



condensing unit. Pull the wire through the conduit

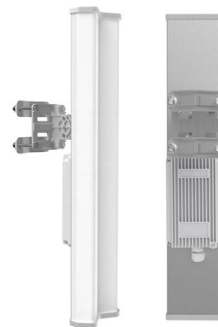


AC POWER DISTRIBUTION SWITCH BOARD

This also includes design, supply, laying and termination of PVC insulated armoured power and control cables required for distribution of AC auxiliary power at different points of switchyard, control room

TECHNICAL SPECIFICATIONS FOR A.C. DISTRIBUTION BOARD

SCOPE: This specification covers the design, manufacturing, testing at works and supply of Indoor type A.C. Distribution Boards for power supply to yard lighting, Battery charger, 33 kV substation



SCOPE

1.1

1.2

1.3

1.4

1.5

1.6

1.7

1.8

1.9

1.10

1.11

1.12

1.13

1.14

1.15

1.16

1.17

1.18

1.19



The functions of coiling the outgoing wires under the air switch of the

The main functions of coiling the outgoing wires under the air switch of the distribution box are as follows: Convenient Wiring and Subsequent Operations: In the quality and acceptance specifications



Air Conditioning Distribution Box: Essential Guide to Function, Types

The air conditioning distribution box consolidates power distribution and protection for HVAC systems, offering organized wiring, accessible controls, and enhanced safety.



The installation requirements for the distribution box

Learn how to install a distribution box safely and correctly. Covers wiring, placement, standards, and expert tips for a compliant setup.

Air Distribution System in HVAC

This chapter discusses the position and arrangement of air handling apparatus on a basic air conditioning system, from the outdoor air intake through



How to Wire a Home Distribution Box

The above mentioned electrical wiring accessories and protective devices are used to control and distribute electric supply (safely to connected



Precautions for incoming and outgoing lines of meter

Therefore, when installing the meter box (small power distribution board), the size of relevant wires must be checked and can be installed only after meeting the



Wiring requirements and specifications for air switches in distribution

Singi Electrica is China manufacturer & supplier who mainly produces miniature circuit breaker, mccb, distribution box, SPD, junction box with 25 years of experience.

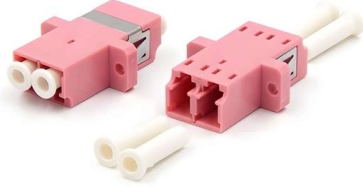
Distribution Boxes: Types and Functions

Learn what an electrical distribution box (DB/distribution board) is, its main components (MCB/RCCB/RCBO, SPD, busbar) and common types.





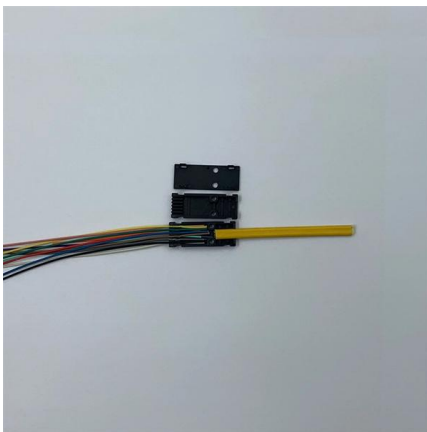
How to Wire an AC Disconnect: Step-by-Step Instructions



All components, from the disconnect box to the wire gauge and insulation type, must comply with the National Electrical Code (NEC) and any local building codes. These codes mandate that the

How To Connect A Distribution Box

After connecting the main power and circuit breakers, wire the outgoing circuits according to the intended electrical load. Make sure each wire is correctly marked for safety. After installation, use a



Air Distribution Basics and Duct Design

As air from the supply outlet moves across the ceiling surface, a certain amount of friction occurs between the supply air and the ceiling surface. This resistance to the flow of the supply air pulls the

Design Options for HVAC Distribution Systems

The dual-duct system employs two air ducts; one cold air duct and one warm air duct from the air-handler to the conditioned spaces. Figure below shows the schematic of a dual duct, constant



Wiring Requirements and Specifications for Air Switches in Low

(4) The wiring between the main air switch and each branch air switch inside the box usually goes on the left side, while the wiring for power distribution system outgoing lines usually goes on the right side.

9.2: How Does an Air Distribution System Work?

An air distribution system works like a loop, constantly moving air through the building to maintain a comfortable environment. This process involves five key



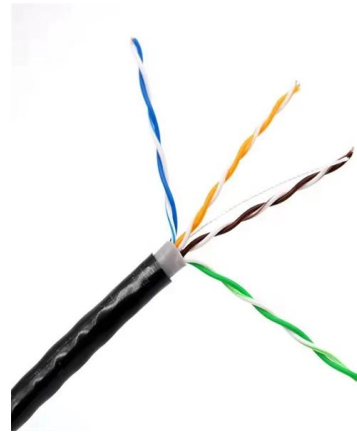
How to Wire an AC Disconnect Box

Master the safe installation of an AC disconnect box. Detailed steps cover required preparation, component types, and precise line/load wiring.



How to determine the size, installation method and

(1) Wiring method of distribution box 1)
Generally, the incoming line of power distribution box adopts five wire system, that is, a, B and C three-way phase line



Ducted Air-conditioning Supply Box Installation

Welcome to our channel! In this video, we'll show you how to install a ducted air-conditioning supply box. Follow our detailed, step-by-step guide to achieve

on video How to Wire a Home Distribution Box

How to Wire a Home Distribution Box - Step-by-Step , Distribution DB box wiring diagram
Welcome to our channel! In this video, we'll walk you through the

190X95X25mm



Supply Ducts: The Complete Guide to Your HVAC

Your HVAC system's supply ducts are the unsung heroes of home comfort, quietly delivering conditioned air to every room in your house. These essential



Basics Of Air Distribution

Outside air is brought into the building through louvers and dampers that lead into the air handler. Though we may think of this air as "fresh," since it comes from outside, that's not always the case



Air Excellent distribution box DB824 125-200 24

Detailed information The Air Excellent distribution box DB824 is a versatile and efficient solution, complete with a stepped adaptor, 24 internal air restrictor rings,

Distribution (Manifold) Box

TLDR Distribution boxes or manifold are important junctions in your system, well designed units allow simple options and adjustment. The Distribution box or manifold is the distribution centre to





Ductwork Guide to Air Distribution Systems , Flow

Ductwork is the backbone of any HVAC system, responsible for delivering conditioned air throughout your home or building. Whether you're a

Air Distribution System Design

An air distribution system acts as the pathway for conditioned air to move from your HVAC equipment to the spaces inside your building. Typically, they consist of a



Contact Us

For datasheets, pricing, or custom telecom energy solutions, please visit:
<https://www.koskolong.co.za>