

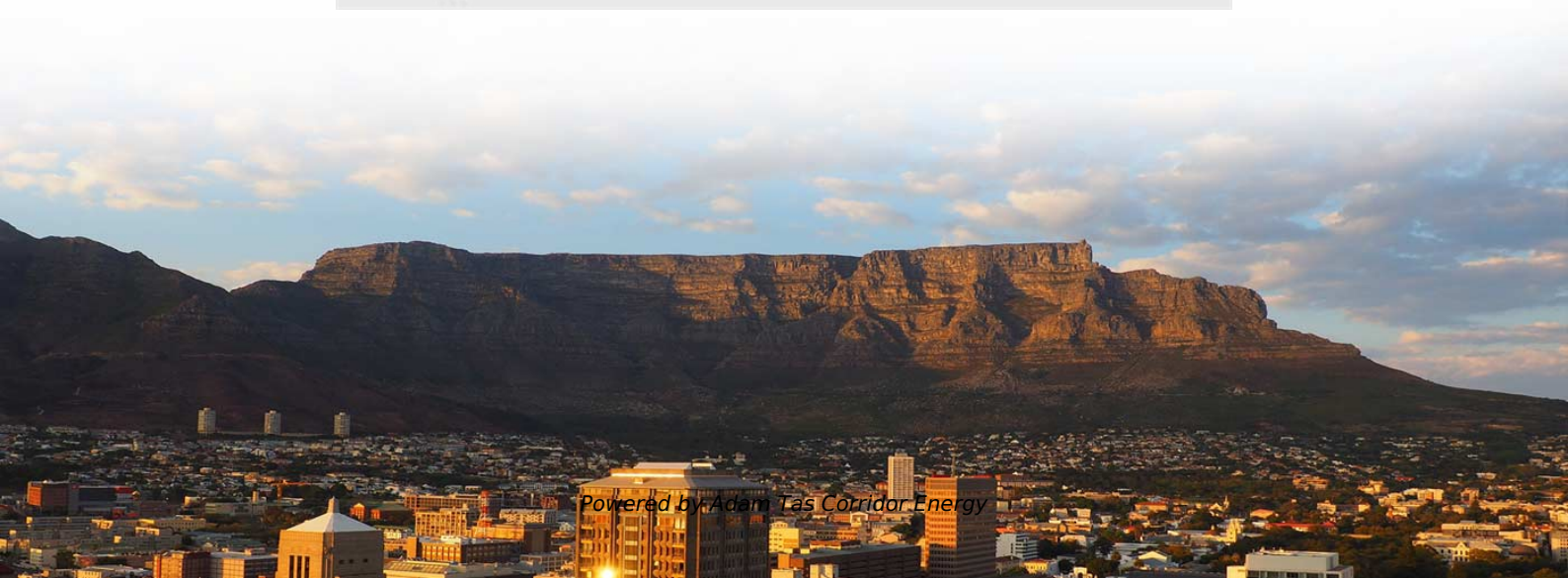


Adam Tas Corridor Energy

Panama Cold Aisle Flame Retardant

1×2 ~ 2×64 Cassette Type Optical Splitter

Uniform splitting ratio, excellent directivity and low insertion loss





Overview

Panama is a fabric washable in cold water (below 30°), ironable at low temperature, it requires professional fine dry clean only, ideal for heavy use, flame retardant, Greenguard Gold-certified, Oeko-Tex-tested (delivering low emissions), IMO-compliant. Made up of a special flame-retardant polyester fibre, Panama has an elaborate texture which imitates perfectly the irregularity of the weave of vegetal fibres and a very strong structure. Acme Plastics supplies high-performance data center containment plastics—including twinwall polycarbonate, solid polycarbonate, and acrylic sheets—engineered to support hot aisle and cold aisle containment. Our lightweight, impact-resistant, and flame-rated materials help operators optimize. These environments require lightweight materials, thermal management, static protection, and compliance with fire safety standards—while reducing energy consumption and providing panels that could also withstand frequent impact. High performance containment systems help maintain a stable environment in mission critical server rooms by preventing hot and cold air.



Panama Cold Aisle Flame Retardant

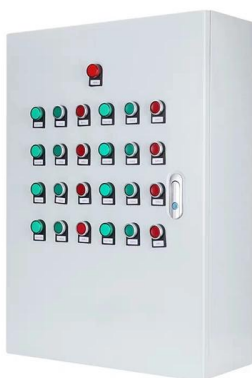
Fr1020 Weatherall 10 Mil Flame Retardant Clear Poly Plastic Sheeting



Shop Fr1020 Weatherall 10 Mil Flame Retardant Clear Poly Plastic Sheeting at best prices at Desertcart Panama. FREE Delivery Across Panama. EASY Returns & Exchange.

Plastics for Data Centers and Aisle Containment

Plastics are used in a variety of data center applications including hot and cold aisle containment panels, airflow baffles, server rack enclosures, cable management, viewing windows and



Panama. Plain colour jacquard, flame retardant. Rubelli

Panama is a fabric washable in cold water (below 30°), ironable at low temperature, it requires professional fine dry clean only, ideal for heavy use, flame retardant,

Hot & Cold Aisle Containment Systems , AMCO Enclosures

Designed for cold-aisle environments and compatible with fire-suppression requirements.



Lightweight, heat-responsive inserts drop at 130° and are FM Approved and UL Listed for use beneath



Aisle Containment

Ceilings span the gap across the top of cabinets in cold aisle containment. They keep cold and hot air from mixing and are available in several styles to best suit your application.

Panama supermarket cold room project

Cold storage plays an important role in supermarkets as it provides an ideal environment for storing and displaying a wide range of perishable goods



Panama Textile Flame Retardants Market (2025-2031) , Opportunities

6Wresearch actively monitors the Panama Textile Flame Retardants Market and publishes its comprehensive annual report, highlighting emerging trends, growth drivers, revenue analysis, and



FM Approvals

Hier sollte eine Beschreibung angezeigt werden, diese Seite lässt dies jedoch nicht zu.

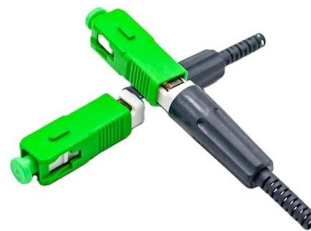


Data Center Aisle Containment , Polycarbonate & PVC

Our materials meet stringent flame and smoke resistance standards, critical for protecting assets in the event of an emergency. Ideal for cold aisle roofs or wall

TRAX PDF

The Seal-Tech Advantage This clean anodized aluminum mounting system provides for rapid and non-disruptive installation in new or retrofit applications. TRAX Hot Aisle/Cold Aisle Containment systems



Fire-retardant panama weave Amaretto , Dedar Milano

The panama weave, a textile classic, is fire-retardant: it combines beauty with functionality to make its confident debut in all residential and public interiors.



Containment Strategies in High Density Data Centers

Last week we continued our article series on the challenges of keeping IT equipment cool in high density environments. This week, we outline some



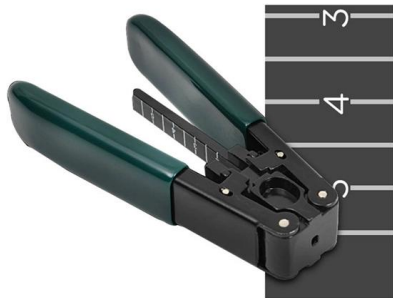
Data Center Containment

Explore cut-to-size twinwall polycarbonate sheets for hot and cold aisle containment in data centers. Lightweight, impact-resistant, and flame-rated materials that

Cold Aisle Containment

Modular designed frame made of cold roll steel, with thickness $\geq 1.2\text{mm}$ to ensure the firmness and security. Each modular unit has proper space for cable





Panama. Plain colour jacquard, flame retardant. Rubelli

Why LEXANTM THERMOCLEAR™ Multiwall Polycarbonate? · Fire Performance. Good fire behavior characteristics, meeting NFPA 75 guidelines for flame spread and smoke development. · Light

Aisle Containment - R K Industrial Solutions

Our aisle containment solutions address these critical needs with a range of cutting-edge features, each of which is geared towards sustainable and reliable



Aisle Containment - R K Industrial Solutions

Using fire-retardant PVC strip curtains, soft containment provides an adaptable barrier that separates hot and cold aisles without the need for permanent

Fire Retardant Trouser Manufacturers in Panama, Port Flame Trouser

Looking for Premium Quality Fire Retardant Trouser Manufacturers in Panama? Retter Workwear - Leading Suppliers and Exporters of Port Flame Trouser Since 2015, Supplying at Factory Price. Call



Thermal Drop Away Ceiling Panels

Thermal Drop Away Ceiling Panels Lightweight, thermally activated aisle containment ceiling panels fall out of way before fire suppression release.



Panama Flame Retardant Fabric Market (2025-2031) , Segmentation

6Wresearch actively monitors the Panama Flame Retardant Fabric Market and publishes its comprehensive annual report, highlighting emerging trends, growth drivers, revenue analysis, and



Panama Flame Retardant Chemicals Market (2025-2031)

The demand for flame retardant chemicals is rising as the government regulations become stricter regarding fire safety standards. Key players in the market are focusing on developing innovative and



Explore hot and cold aisle containment for your data center

Hot and cold aisle containment can help you maintain the best air flow, temperature and humidity in the data center to keep servers running efficiently.



Data Center Aisle Containment , Calsak Plastics

Engineer-grade plastics and in-house fabrication for hot/cold aisle containment--optimized for enterprise data centers and MSP/server rooms. Cut-to-size panels, formed doors, frames, and CNC accuracy

Tate Cold Aisle Containment System

A Cold Aisle Containment (CAC) system encloses the cold supply air within the aisle, preventing it from mixing with hot exhaust air. This ensures servers receive a



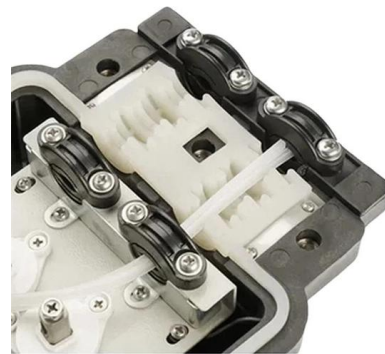
Cold Aisle Containment Manufacturer

Cold aisle containment (CAC) above all promotes energy efficiency in the data center. It is most important to first identify hot spots in server rows.



Data Center Containment Curtains

TRAX hot aisle / cold aisle data center curtains are the industry leading low cost containment solutions. Increase cooling efficiency while measurably lowering



Fire Retardant Coverall Manufacturers in Panama, Fire Retardant

Looking for Premium Quality Fire Retardant Coverall Manufacturers in Panama? Retter Workwear - Leading Suppliers and Exporters of Fire Retardant Coverall Suit Since 2015, Supplying at Factory



Panama Flame Retardant Clothing Market (2025-2031) , Trends,

Panama Flame Retardant Clothing Market is expected to grow during 2025-2031





Contact Us

For datasheets, pricing, or custom telecom energy solutions, please visit:
<https://www.koskolong.co.za>