



Adam Tas Corridor Energy

Performance of New Zealand Direct-Buried Optical Cables





Performance of New Zealand Direct-Buried Optical Cables

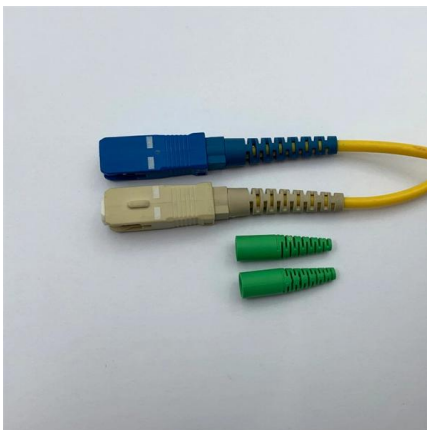


Direct fibre burial.

Through utilising our retractable fibre cable RetractaNetXSTM, this solution can save on both installation and material costs. Combine that with our quality drop cables and connectivity options, and you'll

PERFORMANCE OF BURIED HIGH VOLTAGE POWER CABLES

INTRODUCTION The recent sequence of earthquakes in Christchurch New Zealand resulted in functional damage to more than 200 buried high voltage power cables due to liquefaction. A similar



Direct Buried Cable Installation PDF , PDF , Cable

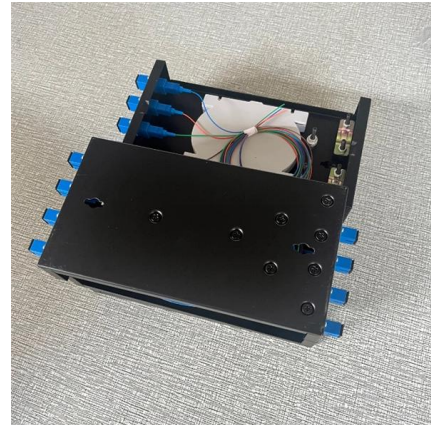
1.1 This installation procedure is intended as a basic guideline for the installation of direct buried fiber optic cable. It is intended for personnel with prior experience in

Buried Cable Installation

Individual company practices for placing fiber optic cable should supersede any conflicting instructions in this document when they do not



exceed the cable's optical and mechanical performance



The FOA Reference For Fiber Optics -Outside Plant

In general, plowing-in the direct burial cable is the most desirable and economical method of cable placement in open or rural areas where there likely to be fewer

Direct Buried Optical Fiber Cable

Cross Section of Direct Buried Optical Fiber Cables Key Specifications for Direct Buried Cable For Detailed Specifications, consult Technical Advisor of Premier



Instal 04 Buried Cable Installation Practices Iss3

Individual company practices for placing fiber optic cable should supersede any conflicting instructions in this document when they do not exceed the cable's optical and mechanical performance





Microsoft Word

Direct Burial Cable Features The unique second coating and stranding technology provide the fibres with enough space and bending endurance, which ensure good optical property of the fibres in the



GENERAL INFORMATION

All direct burial cable should contain a corrugated steel armor tape for protection against rough terrain and rodents. Before digging, all existing underground utilities such as buried cables, pipes, and other

Direct Buried Cable

1. General 1.1 This installation procedure is intended as a basic guideline for the installation of direct buried fiber optic cable. It is intended for personnel with prior experience in the planning, engineering,



Depth Requirements for Buried Cables NZ

This document provides guidelines for minimum separation distances between buried power and telecommunication cables in New Zealand. It outlines the

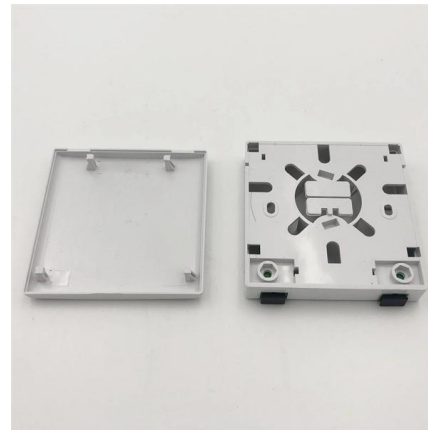


LoRawan outdoor base station



How Deep to Bury Fiber Optic Cable: A Best Practice

Installing a robust and reliable fiber optic network requires carefully determining the optimal burial depth. Proper cable placement protects your



Microsoft Word

The mechanical and environmental performances of the cable are in accordance with the following table. Unless otherwise specified, all attenuation measurements required in this section shall be performed

Direct-Buried Installation of Fiber Optic Cable

2.3. Direct-buried installations are often combined with duct installations to go under obstacles like roads, driveways, etc. At the transition point between the direct-buried section and the conduit, the





Direct Buried Fiber Optic Cable Price And Installation

Direct buried fiber optic cable is a kind of optical cable which is armored with steel tape or steel wire outside. With performance of resisting external mechanical damage and soil erosion, it can be

Direct Buried Fiber Optic Cables , Optical Communications , Corning

The most commonly deployed outdoor cable design, with fiber counts from 12 to 432 fibers. Armored construction provides crush and rodent protection in direct-buried installations.



Recommendation ITU-T L.101 (08/2024)

Recommended technical requirements are detailed by reference to IEC 60794-3-11 on outdoor optical fibre cables for duct, directly buried, and lashed aerial applications. Changes and

Direct fibre burial.

2-12F Terrestrial Roddable/Direct Bury Slotted GRP Optical Cable G657.A2. Designed for external underground installation in ducts, by pulling or by direct burial in shallow open-cut trenches.



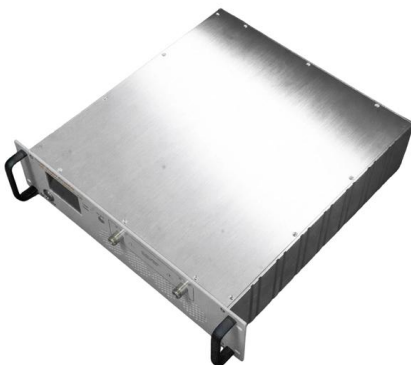
Optical Cables

Products This Loose tube dielectric optical cable is designed for external underground installations in ducts by pulling, jetting or floating techniques or by



Chorus Fibre Install: Cable Depth

We direct the duct to be buried at 450mm so it won't crack. Because if it does, they usually end up filled with dirt that obstructs us from hauling the cables through.



Direct Buried Fiber Optic Cables , Optical

In the absence of duct infrastructure, cables can be buried directly into the ground in a trench or using a vibratory plow.



Underground Fiber Optic Cable Installation:

Explore the process and benefits of underground fiber optic cable installation. Learn how this infrastructure investment can elevate your internet

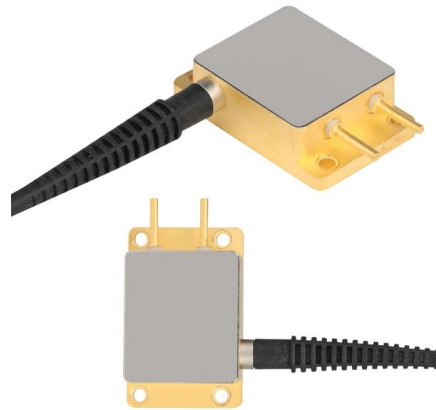


Optical Cables

Our new rodent proof, all dielectric fibre optic cable NoR@T is designed to withstand aggressive NZ rodents. With a protective layer of Glass Reinforced Plastic (GRP)

Fibre Cable , atg Technology Group , Innovative optical

We have a large stock of cable, so delivery times are normally quick, and you are backed by our reputation, having successfully supplied optical fibre products to



What is special about direct burial fiber? : r/HomeNetworking

What would be the long-term consequences of burying a fiber not intended to be buried? The only thing I could ascertain is that perhaps water could ingress and dissolve through the plastic and result in



Direct Buried Fiber Optic Cable Price And Installation

Direct buried fiber optic cable is a kind of optical cable which is armored with steel tape or steel wire outside. With performance of resisting external mechanical



How Deep is Fiber Optic Cable Buried: A Technical Guide

A critical aspect of deploying these cables is determining their burial depth, which ensures protection from environmental

Contact Us

For datasheets, pricing, or custom telecom energy solutions, please visit:
<https://www.koskolong.co.za>