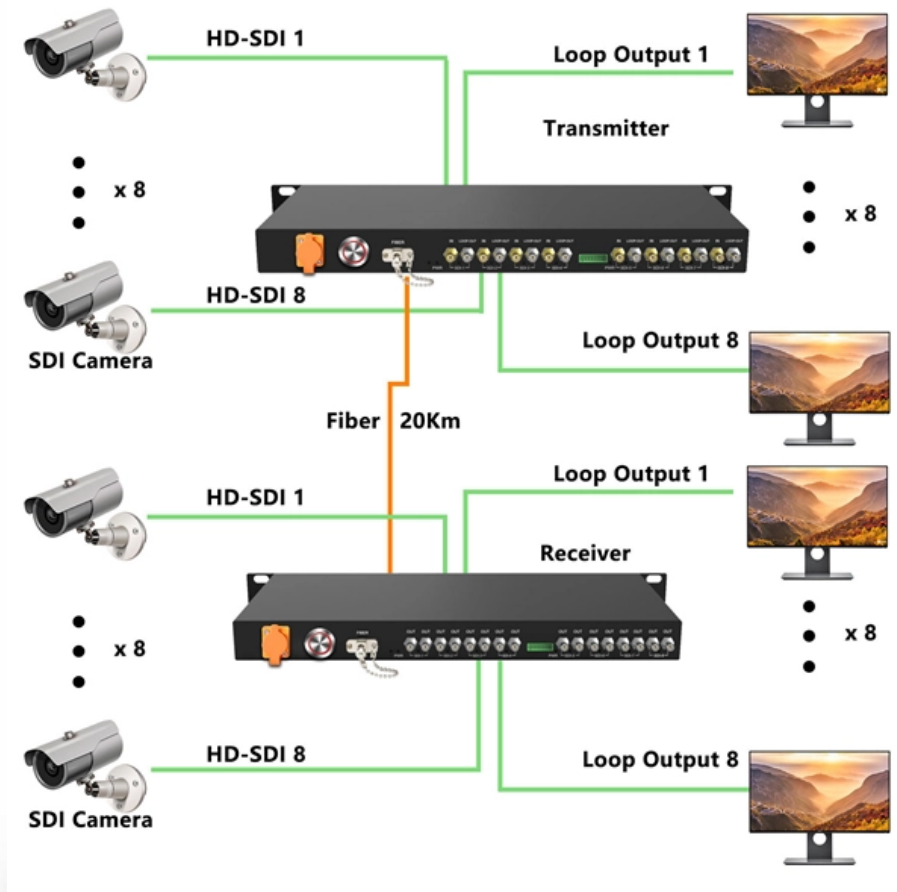




Pole and wire maintenance painting and finishing of junction boxes





Pole and wire maintenance painting and finishing of junction boxes

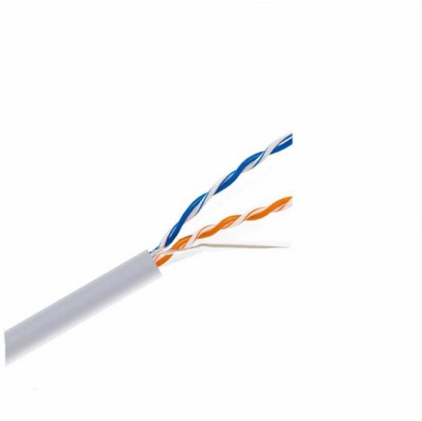


Guide to Junction Boxes

This is further reinforced in Appendix 15 of the Wiring Regulations which states "Junction boxes with screw terminals must be accessible for inspection, testing & maintenance or, alternatively, use

Lighting Circuits using junction boxes

Lighting Circuits Lighting circuits using junction boxes. Junction Boxes An alternative method, this uses the same wiring principles as the looped ceiling roses, but here



Demystifying Junction Box Wiring: Everything You Need

Learn about junction box electrical wiring, including how to install and troubleshoot wiring connections in junction boxes for electrical circuits.

What Is a Junction Box?

Learn about a junction box as it pertains to a residential home and its electrical wiring, plus DIY tips to install an electrical junction box.

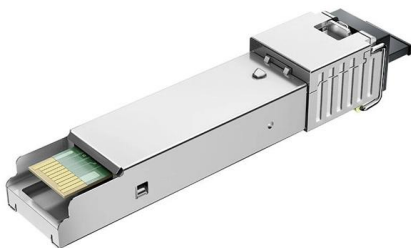


Get Flawless Results Painting a Ceiling Junction Box: 5 Tips

So, let's begin by addressing the most critical step before you even think about opening a can of paint. Achieving that pristine finish around your ceiling junction box isn't just about

Can you paint over a junction box?

Consulting with a licensed electrician or a professional painter can provide you with expert advice and ensure that your decision to paint over a junction box is not



How to Install a Junction Box: Step-by-Step Tutorial

A simple guide to setting up an electrical junction box Junction boxes protect electrical wires from damage, prevent shocks, and stop sparks from igniting flammable material nearby. To install one, you'll need to strip the ends off all the



Junction Boxes , Electrical Cable Connection Boxes

Our junction boxes provide a safe, secure and tidy way to join and extend electrical cables in domestic, commercial and industrial installations. Designed to house wire connections and terminals, they help



Best Ways to Maintain and Inspect Electrical Junctions

Proper maintenance and inspection of these junctions are essential to ensure safety, prevent electrical failures, and extend the lifespan of electrical installations.

Correctly Wiring Junction Boxes

Proper wiring of junction boxes: Choose the right box, prepare the cables, connect them, and check the connections.



IF 861

MAINTENANCE Frequent inspection should be made. A schedule for maintenance check should be determined by the environment and frequency of use. It is recommended that it should be at least



FRP Pole-Mounted Junction Boxes , Durable

Discover the benefits of FRP pole-mounted junction boxes for safe, long-lasting electrical and telecom use. Lightweight, corrosion-free, and easy to



How to Maintain and Inspect Your Junction Boxes?

Regular maintenance and inspections of junction boxes are essential for ensuring the safety, performance, and longevity of your electrical system. By

17th Edition Junction Box, Maintenance Free Junction

The Hager J804 junction box 17th edition is recommended to be used in residential and commercial buildings, refurbishments and re-wires, power and lighting





The Complete Guide to Electrical Junction Box

Junction boxes may be small, but the risks they manage are significant. Prioritizing junction box maintenance isn't just about preventing breakdowns--it's about

Electrical Boxes , Metal Junction Boxes , Wire Connector Boxes

Temporary Installations: Junction boxes are also used in temporary installations, such as construction sites, to provide safe and accessible connections during the project. Junction boxes are essential



Can You Paint Electrical Boxes? Rules And Safety Tips Revealed

Discover the rules and safety tips for painting electrical boxes. Learn how to safely enhance your home's aesthetics without compromising safety.

Can you paint over a junction box?

Junction boxes are an essential component of electrical systems, providing a safe way to connect and contain electrical wires. Whether you have a functional or



Safe Painting Around Junction Boxes: Preparation And Technique

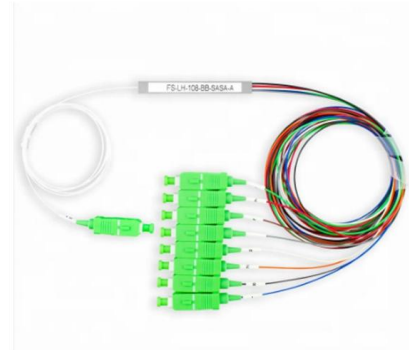
Painting around junction boxes requires safety measures like turning off power and wearing protective gear. Prepare the surface by cleaning and priming. Gather tools and materials,



Cable structure

Junction Box

Junction boxes may be used to connect cables subject to the current regulations. All electrical connections must have durable electrical continuity, adequate



Understanding Junction Boxes: Essential Components

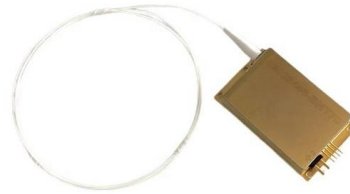
VIOX Junction Box B. Importance in electrical systems Junction boxes are essential for preserving the safety and effectiveness of electrical





The Essential Guide to Junction Boxes: Types, Uses,

Learn about junction boxes: their types, uses & installation processes. This essential guide covers everything you need to know for safe & efficient



Safe Painting Around Junction Boxes: Preparation And Technique

Today, we're putting on our painting gloves to tackle a common yet often overlooked task: painting electrical junction boxes. Don't let the word "electrical" scare you off; with our comprehensive

The Essential Guide to Junction Boxes: Types, Uses,

The Essential Guide to Junction Boxes: Types, Uses, and Installation Learn about the importance of junction boxes in electrical systems, how they



NEC Electrical Codes for Junction Boxes [May 2026]

Stay NEC-compliant! Learn key electrical code requirements for junction boxes, including sizing, grounding, materials, and clearance to ensure safety and efficiency.



Electrical Junction Boxes for Safe Connections

Junction boxes are one of the most integral components of any electrical system, it is a protective enclosure used to house electrical connections and keep them safe whilst also organised. Junction



What is a Junction Box (or jbox)? , Electrical Knowledge

A junction box - also known as an ' electrical box ', ' jbox ', 'or ' terminal box ' - is a protective box where wires are interconnected. Junction



What Is a Junction Box? Uses, Types & Safety

A junction box is a protected enclosure that holds wire connections, improves safety, and helps keep electrical systems organized and code-compliant.



The Importance Of Proper Installation And Maintenance Of Electrical

In conclusion, electrical boxes play a critical role in the safety and functionality of electrical systems. Proper installation and maintenance of electrical boxes are essential to protect wires,



Contact Us

For datasheets, pricing, or custom telecom energy solutions, please visit:
<https://www.koskolong.co.za>