



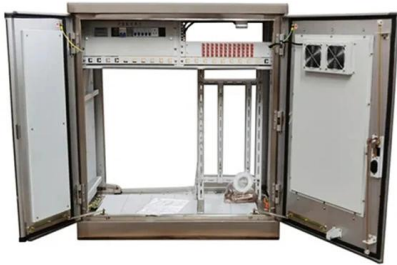
Adam Tas Corridor Energy

Power Consumption of Single-Mode Fiber Optic Transceivers





Power Consumption of Single-Mode Fiber Optic Transceivers

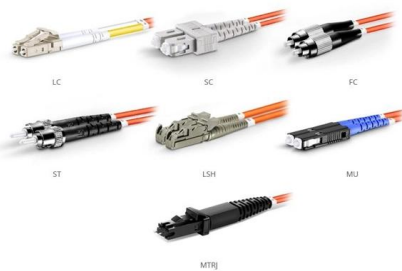


Cisco 40GBASE QSFP Modules Data Sheet

Cisco QSFP-40G-SR-BD (40G BiDi) The Cisco QSFP 40-Gbps BiDirectional (BiDi) transceiver (Figure 1) is a pluggable optical transceiver with a duplex LC connector interface for short

Optical Transceiver Market Size, Share, and Trends Analysis 2032

The global Optical Transceiver market size was estimated at USD 13.08 Billion in 2024 and is estimated to grow at a CAGR of 15.41% from 2025 to 2032.



OM1 Fiber Patch Cable Family

Single Mode vs Multimode SFP: 2026 Strategic ROI Guide

On a datasheet, 400G-SR8 looks cheaper, but when you factor in the 15-30% higher power consumption of SMF modules versus the cooling and cable density requirements of MMF, the

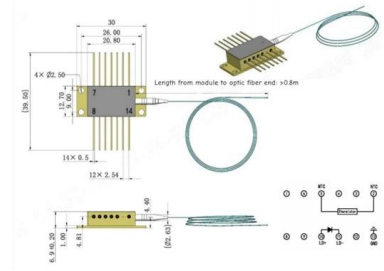
1G SFP LX 1310nm 20km Single mode Transceiver

Generic SFP-1G-LX Compatible 1000BASE-LX/LH SFP 1310nm 10km-20km Transceiver supports



1G gigabit Ethernet throughput over singlemode fiber (SMF)

Outline drawings
mm



100G Optical Transceiver, Optical Transceiver Module

The 100G QSFP28 ER1 optical transceiver modules are designed to support 100G Ethernet, suitable for data center links up to 40km over single-mode fiber. The

Low Power DSP-based Transceivers for Data Center Optical Fiber

Low Power DSP-based Transceivers for Data Center Optical Fiber Communications (Invited Tutorial) Radhakrishnan Nagarajan, Fellow, IEEE, Fellow, OSA, Ilya Lyubomirsky, and Oscar Agazzi, Life



1.25G 20km Single Mode SFP Transceiver (LX, 1310nm, LC)

Featuring low power consumption, the NS.SF-0001-ST is ideal for a wide range of Gigabit communication applications, including Internet Service Provider networks, enterprise LANs, data



Aspects of Power Consumption in Coherent Fiber-Optical

This thesis is organized as follows: Chapter 2 provides an overview over coherent fiber-optical communication systems and their power consumption, discussing how the basic building blocks and



1.6T OSFP 2xDR4/DR8, 1310nm, 500m, DDM, CDR,

The MJ-OSFP1.6TB-DR8 is a cost-effective, high-performance OSFP module tailored for AI datacenter applications, delivering an aggregate throughput of 1.6

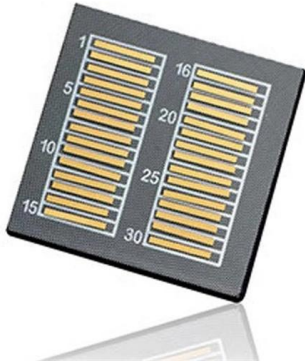
Optical Transceiver Market Size, Share, Analysis 2030

Single-mode fibers can be optimized for 1310 nm wavelengths, resulting in lower fiber optic attenuation. These optical transceivers support high-speed data



Optical Transceiver vs. Fiber Optic Module: What's the Difference

If a product is called an "optical module" and adheres to an MSA, it's functionally a pluggable transceiver in practice. (Practical note: always match form factor + MSA + optical specification -- e.g., SFP+ 10G



1600G OSFP1600 2xDR4 500M 1.6T Optical Transceiver

1600G OSFP1600 2xDR4 500M 1.6T Optical Transceiver RO-1T6-2DR4 The 1600G OSFP1600 2xDR4 Transceiver is designed to transmit and receive serial optical



Intel® Ethernet QSFP28 Optic

The QSFP28 SR4 transceiver is a high-performing module for SR optical links over OM4 MMF, and is ideal for short-range, multi-lane data communication, and interconnects applications. The QSFP28

Technology from 400G to 800G to 1.6T Transceivers

It has efficient power management, requiring only 33W of power to support a variety of optical solutions, including single-mode fiber, multi-mode





Single Mode Optical Modules Market 2026

Emergence of Coherent Optics for Long-Haul The market is seeing growing interest in coherent Single Mode Optical Modules for metro and long-haul applications, offering improved transmission



25G BiDi SFP28 80KM Optical Transceiver , FiberMania

Perfectly designed for 25g bidi sfp28 optical transceiver 1270/1330nm 80km single-mode fiber LC for switch, router, and server optical connections.



1.25G SFP Transceiver, SFP Optical Module, 1.25Gbps RX1550

1.25G SFP Transceiver, SFP Optical Module, 1.25Gbps RX1550 TX1310nm Single Mode Fiber SFP Optical Module with Zinc Alloy, Plug and Play, Low Power Consumption for Switch Router Ser Share:

SFP Transceiver Optical Fiber Single-Mode LC 1000Base-BX

Power supply Power supply required: 3.3 V Power consumption: 1.0 Watt (maximum)
Environmental Dimensions (W x D x H): 57 x 14 x 12 mm Weight: 20 g Operating temperature: 0 - 70°C Operating





Single -mode fiber transceiver

Single-mode optical fiber transceivers consume low power, which makes them energy-efficient and cost-effective. They are designed to operate at low power levels, which reduces the

A Faster Future with Linear Pluggable Optics

Linear Pluggable Optics are a low-power pluggable module interface that eliminates DSP chips, creating a linear signal path.



Optical Transceiver vs. Fiber Optic Module: What's the Difference

Introduction Engineers, purchasing managers and installers often see the terms I-Transceiver, optical module and fiber optic module used interchangeably -- and that causes confusion. This article

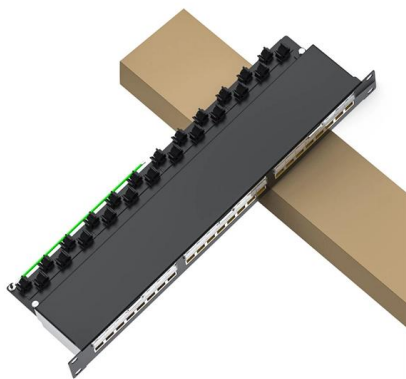
UniFi 25G Single-Mode Optical Module

SFP28 transceiver that supports 25G connections up to 10 km using single-mode fiber with a duplex LC UPC connector.



SEL-2830 Single-Mode Fiber-Optic Transceiver/Modem

Receives power from the host device via the connector; no separate power supply or power wiring is needed. Transmits continuous light pulses for simpler testing with an optical meter.



25G BiDi SFP28 Optical Transceiver 1270/1330nm 80KM

High-quality for 25g bidi SFP28 optical transceiver 1270/1330nm 80km single-mode fiber lc for switch, router, and server optical connections. Private OEM.



Single Mode SFP Transceiver: Complete Guide Explained

In this guide, you will learn what a single mode SFP transceiver is, how it works, the key specifications and types available, and where it is commonly used.





Next-Generation Connectivity: The Rise of 800G OSFP 2*FR4 Optical

The 800G OSFP 2*FR4 transceiver, specifically the TS-OP-318H-01C, supports a maximum reach of up to 2km over standard G.652 single-mode fiber (SMF). This makes it suitable for large



The Ultimate Guide to SFP Modules (2026): Types,

Confused by SFP vs SFP+? Read the definitive 2026 guide on SFP modules. We explain Single Mode vs Multimode, DDM diagnostics, and how to choose the right

QSFP-40G-UNIV Arista 1310nm SMF 40G Transceiver

Details of Arista 1310nm SMF 40G Transceiver
The Arista QSFP-40G-UNIV XVR-00071-01 is a high-performance optical transceiver designed for seamless data transmission. Operating at 1310nm



Contact Us

For datasheets, pricing, or custom telecom energy solutions, please visit:
<https://www.koskolong.co.za>