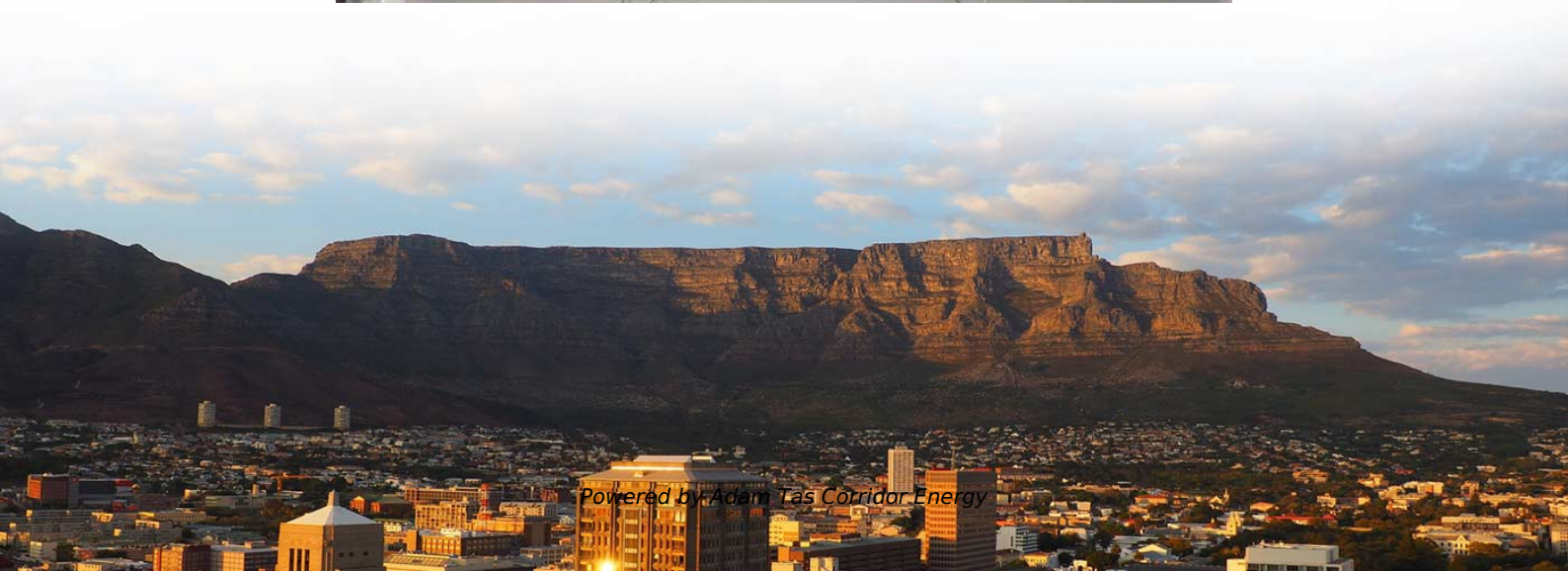
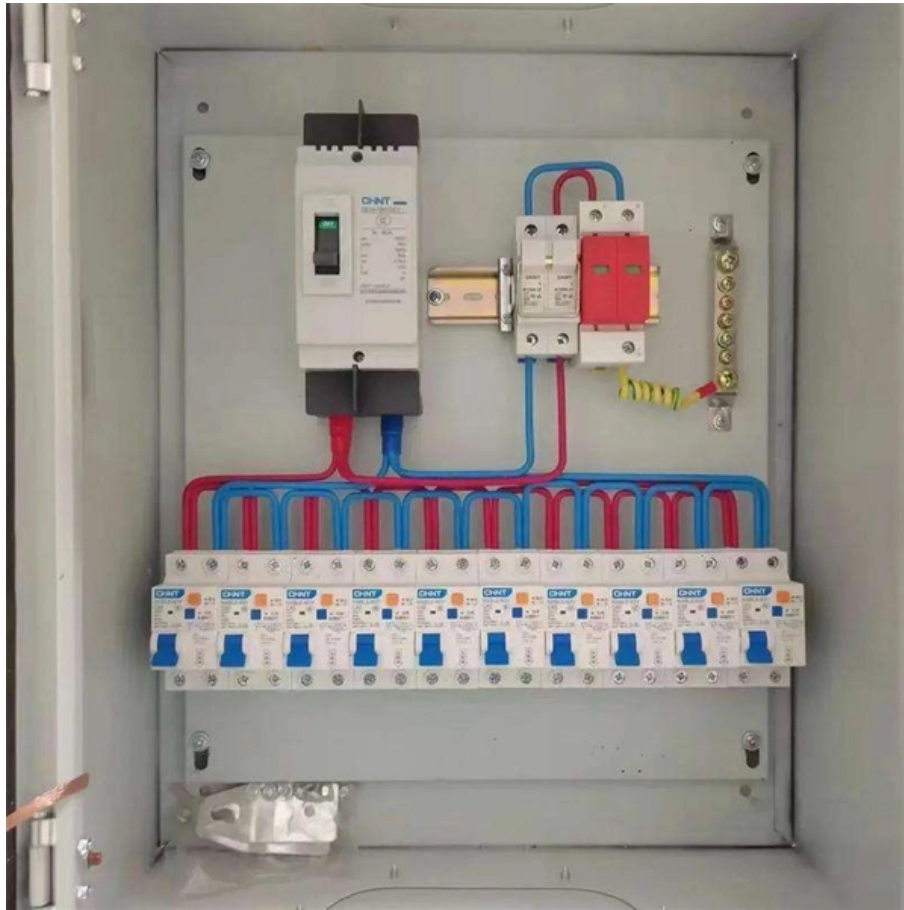




Adam Tas Corridor Energy

Pre-reserved holes for roof cable trays





Overview

New pre-punched holes allow secure attachment of cables to the inside of the channel without the need to drill holes, reducing labor and speeding up installation. When developing our cable support OBO can offer reliable solutions for systems, three attributes are at the routing and fastening cables securely core of what we do: efficiency, resilience and safety. As buildings contain more and more devices and systems requiring structured cabling, the need for sturdy cable tray supports is growing. A rung spacing of 6 to 9 inches (150 to 230 mm) is preferable when the cable tray is used for instrumentation and control applications that require.



Pre-reserved holes for roof cable trays

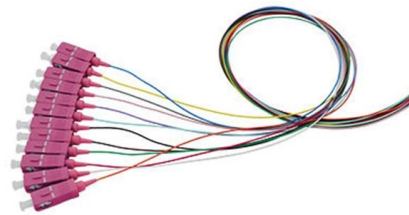


Rooftop Pyramid Tool-Free Cable Tray Support Kit, 12.52"

We're here to help. Use left and right arrow keys to resize the column. Hold Shift for larger steps. Press Home for minimum width and End for maximum width.

How to Install Cable Tray: A Comprehensive Guide to Different Cable

Welcome to our step-by-step guide on installing cable trays! In this video, we'll explore the different types of cable trays available and provide detailed instructions for their installation.



Cable and pipe seals

Whenever you need to add cables or pipes, the unused modules with roxtec Multidiameter™ are ready. this solution is based on removable layers and allows for a perfect fit to any dimension of cable or

Rooftop Cable Tray Support System

PHP's cable tray support system is engineered to sustain various sizes of cable runs on your rooftop. PHP is the leader in cable tray support



Cable tray

In the electrical wiring of buildings, a cable tray system is used to support insulated electrical cables used for power distribution, control, and communication. Cable

ROOFPORT®

The ROOFPORT® RP range of fittings provides a weatherproof entry/exit point for pipes and cables as they pass through the all important weathering membrane.



Cable Tray Installation

Learn everything about cable tray installation with our complete guide. Discover types, steps, and safety tips for efficient electrical cable management.



4 Best Practices For Rooftop Cable Trays

Cable trays are a must for any commercial or industrial rooftop. Make sure you are using best practices when installing them.



ROOFPORT®

ROOFPORT® Roof penetration fittings for small cables and pipes providing a safe routing solution to the internal environment. The ROOFPORT® system provides

What Is A Rooftop Cable Tray, Cable Tray Support

What is a rooftop cable tray? Cable tray support systems are structures designed to uphold electrical cable runs on flat or sloped roofs. Traditionally, facilities have



What is a cable tray?

Cable trays are often used on external walls and roofs, before cables enter the building through a roof penetration or vertical wall penetration - and



GUIDE CABLE TRAYS TECHNICAL

NEMA VE 1-2017 Specifies requirements for metal cable trays and associated fittings designed for use in accordance with the rules of Canadian Electrical Code, Part I and the National Electrical Code®



Cable Supports

Pre-fabricated, like all Roof-Pro supports, to save you time and improve efficiency on-site.

Rooftop Cable Tray Support Kits Systems

Rooftop cable tray supports various cable runs with self-splicing covers, eliminating splice needs for easy rooftop protection.



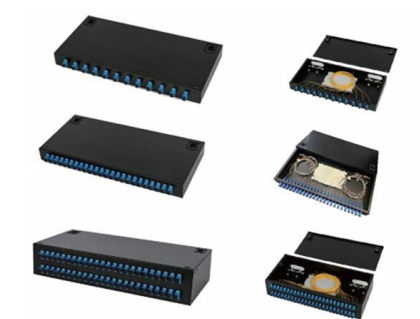


Cable Tray Installation Method Statement

GI Cable Tray Installation and Trunking in the Roof Area All the supports in the roof area shall be provided as per the approved roof coordinated MEP services

Selecting Cable Trays: A Complete Guide for Cable

Selecting cable trays can feel overwhelming, especially with so many options available. But don't worry--I've got you covered.



Roof Cable Tray Supports

Used for safely and securely mounting cable trays, our RTS Roof Cable Tray Supports (H-Stands) are available in a variety of configurations for numerous

Precast Concrete Cable Tray Solutions

cable tray.pdf - Free download as PDF File (.pdf), Text File (.txt) or read online for free. The document provides examples of applications for Halfen cast-in channels



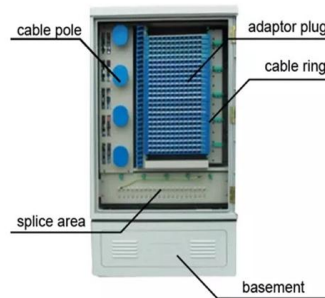
Mounting process of Unex insulating cable tray 66 on a flat roof

Learn how to mount Unex insulating cable tray 66 on a flat roof with this step-by-step video guide.



Cable Tray Supports for rooftops

As buildings contain more and more devices and systems requiring



Cable Tray Technical Guide A practical guide to product selection and

Cable tray installed in a hazardous location must contain only those cables that are appropriate for this type of environment as defined in Chapter 5 of the NEC.





Guide to cable support systems

Four different mesh cable tray types are available, depending on the requirements, area of application and cable quantity. The innovative Magic connection system of the GRM and G-GRM mesh cable



Cope

Channel cable tray secures cables easily using pre-punched holes. New pre-punched holes allow secure attachment of cables to the inside of the channel

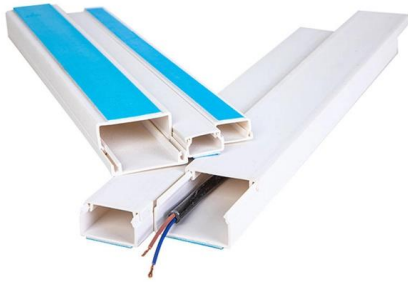
Effective weatherproofing for cable trays , Jones

The best method for weatherproofing cable trays will depend on whether the cables are entering the building through a vertical wall penetration or



Cable Tray Technical Guide A practical guide to product selection and

A practical guide to product selection and installation This guide for engineers and installers has been developed by ABB as a practical reference regarding cable tray characteristics, installation, and



Contact Us

For datasheets, pricing, or custom telecom energy solutions, please visit:
<https://www.koskolong.co.za>