



**Adam Tas Corridor Energy**

# **Price of adding a door panel to a distribution box**





## Overview

---

A typical home replacement for a 100–125A indoor panel runs about \$1,200–\$2,500 in parts and labor; a 200A outdoor upgrade with new meter socket can reach \$3,000–\$6,000. Assumptions: standard conduit routing, existing wiring reachable within 10–30 feet, and a single dwelling. Key cost drivers include panel amperage, indoor vs outdoor location, wiring length, and whether a full panel upgrade or rerouting is needed. Modern distribution boards feature potential life-saving technology in the form of a Residual Current Device (RCD), the purpose of which is to prevent anyone from getting an electric shock, should someone in the property accidentally come into contact with something live, such as a bare wire. Read on to find out what a distribution board is, its different types, why you need to upgrade it and how often, and the costs associated with upgrading an old distribution board with a new one: **WHAT IS A DISTRIBUTION BOARD?**

A distribution board, also called a distribution panel, breaker panel, or. Also known as an electric panel or panel board, a distribution board acts as the main supply system in your home or commercial space.



## Price of adding a door panel to a distribution box

---



### Cost Guide for Replacing Your Septic System Distribution Box

This can add to the overall cost, as fees for permits and inspections can range from \$50 to several hundred dollars. Additional Repairs: If the distribution box has failed, there may be other

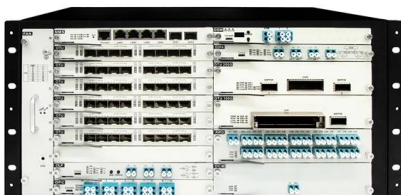
### Cost To Replace Electrical Panel , Upgrade Breaker Box

The cost to replace an electrical panel is \$850 to \$1,600 for 100 amps or \$1,475 on average. To upgrade to 200 amps, expect to spend \$1,300 to \$2,500.



### How Much Does It Cost to Upgrade Electrical Panel and

Wondering how much it costs to upgrade an electrical panel for your warehouse or building? Learn what affects the price and why it's worth the

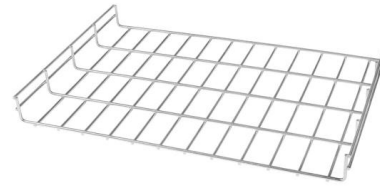


### Distribution Box Cost Guide 2024: Comprehensive Pricing, Features

Discover complete distribution box cost analysis including pricing factors, advanced features,



safety benefits, and smart technology innovations. Get expert insights on ROI, installation costs, and long



### Distribution Box Replacement Cost Guide 2026

Key cost drivers include panel amperage, indoor vs outdoor location, wiring length, and whether a full panel upgrade or rerouting is needed. The article outlines cost ranges, per-unit pricing,

### How to Replace an Electrical Breaker Panel

How long does it take to replace an electrical panel? If the job is fairly straightforward and standard, it takes between four to eight hours to replace an



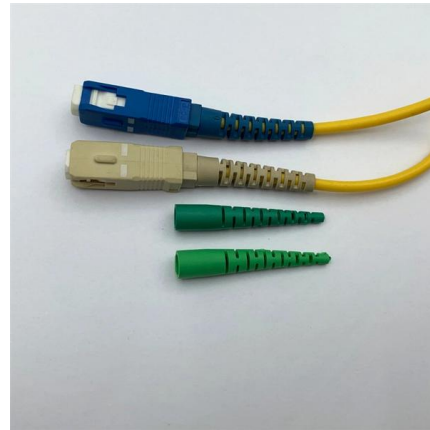
### Adding a Door Near a Distribution Panel

I have an owner that wants to add a door into a room that contains a Distribution Panel (See attached). The Only thing I can think of is that they need to add a cover to the Distribution Panel



## New Panel Box Cost Guide 2026 - LatestCost - Real-Time Price

The cost of a new panel box depends on the box size, meter/branch requirements, enclosure type, and labor for installation. This article breaks down typical price ranges and driving



## TPN Double-Door Distribution Boards

Payal range of TPN Double-Door Distribution Boards (DBs) is a great choice when you're looking for durability, quality, convenience and an elegant design. Also

## Cost To Replace Electrical Panel [2026 Data] , Angi

Electrical panel replacement costs range from \$518 to \$2,188, and your total reaches up to \$4,500. The amperage your home needs and the type of



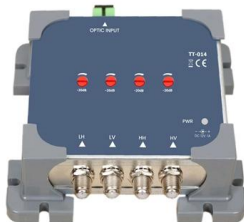
## Panelboards and Distribution Panels: What They Are

Introduction Navigating the world of electrical distribution can be confusing, with terms like panelboard, switchboard, and distribution box often



## How Much Does it Cost to Replace an Electrical Panel?

Replacing a panel at a large luxury property or during a major home expansion with substantial electrical service upgrades will fall at the top of this



## How Much Does It Cost to Replace Circuit Breaker Box?

In the USA, the average cost to replace an electrical panel box is around \$1350 or more and in the United Kingdom, the average electrical

## Distribution Box Replacement Cost Guide - One and Done Prep

Typical cost ranges for replacing a distribution box or service panel in the United States vary widely based on panel size, amperage, labor, and whether a full service upgrade is needed.





## Distribution Boards

Distribution boards, often referred to as electrical panels or breaker boxes, serve as the nerve center of any electrical system. Here we explore the crucial parts of a distribution board and gain insights into

## New Panel Box Cost Guide 2026 - LatestCost - Real-Time Price

New panel box pricing typically ranges from about \$150 to \$1,900 for parts and labor, with most residential projects landing between \$450 and \$1,500 depending on amp rating, gauge of



## Inside Your Home's Electrical Service Panel

Learn all about your home's power distribution center in this helpful guide on home electrical service panels.

## Cost To Replace Electrical Panel - Forbes Home

Replacing an electrical panel on average can cost anywhere from \$550 to \$3,000, but most homeowners pay around \$1,300.



### Distribution Box: Types and Functions , Axis-Electricals

A distribution box ensures that electrical supply is distributed in the building, also known as a distribution board, panel board, breaker panel, or electric panel. It is



### Distribution Boards , T Walsh Electrical Contracts

The average cost of installing a new distribution board is typically between £300 and £500. The final cost will depend on the particular setup and requirements of your



### Distribution Board vs Distribution Box: What are the

Definition board, which is also called a breaker panel or panel board is an electrical component which helps in dividing electrical power feeds into



**MPO-MPO** Low Smoke Halogen Free Sheath

Multimode 10 Gigabit 24 pole OM3

Insertion loss <0.35dB Return loss >50dB



## Distribution Board Upgrades - Cost, How Often?, Types

Read on to find out what a distribution board is, its different types, why you need to upgrade it and how often.



## Distribution Box Replacement Cost Guide - Design Transition Studio

This article outlines the cost factors, price ranges, and practical budgeting advice for a U.S. audience. The price depends on electrical code upgrades, permit needs, and whether upgrades require panel

## Essential Insights on Replacing Your Septic Tank Distribution Box

Discover costs, factors, and tips for replacing your septic tank distribution box to ensure a reliable wastewater system.



## Homewyse Calculator: Cost to Install Electrical Service Panel

See professionally prepared estimates for electrical service panel installation work. The Homewyse electrical service panel installation calculator uses industry-standard methods and up-to-date cost



## How Much Does Electrical Panel Installation Cost?

Fuse Box Replacement: \$1,500 to \$2,000  
Main Lug Panels/Secondary Panels: \$400 to \$1,750  
Subpanel: \$530 to \$1,940  
Circuit Breaker Switches: \$100 to \$200 each  
Electric Meter Box:



## Contact Us

---

For datasheets, pricing, or custom telecom energy solutions, please visit:  
<https://www.koskolong.co.za>