



Adam Tas Corridor Energy

Principle of Danish Dust Explosion-proof Distribution Box





Principle of Danish Dust Explosion-proof Distribution Box



Explosion Proof Distribution box-

Ex HVAC/R Explosion-Proof Distribution and Control Explosion-Proof CCTV System and Products Hazardous Area Intelligent IoT Terminals · All · Control Cabinet · Dust Cabinet · Positive Pressure ·

Explosion Proof Distribution Box & Electrical Enclosures

Durable Hexlon Explosion Proof Distribution Boxes and Electrical Enclosures, IECEx and ATEX certified for Zone 1 and Zone 2.



Explosion-proof Distribution Box

China Explosion-proof Distribution Box catalog of Exd Explosion Prevention Exe Aluminum Alloy Junction Box Explosion-Proof Threading Straight Box Ex Seal Wire Box, Explosion-Proof Type a

Essential Guide to Dust Explosion-Proof Connection Boxes

The argument for using dust explosion-proof connection boxes is strong and multifaceted.



Firstly, they are specifically engineered to contain potential explosions, which helps prevent fires from spreading



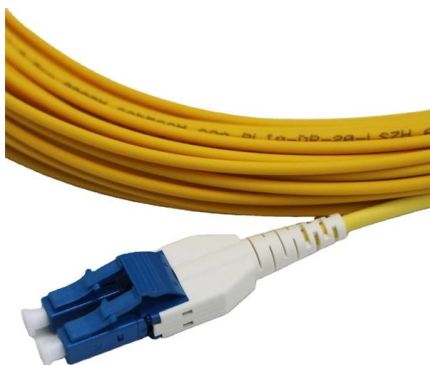
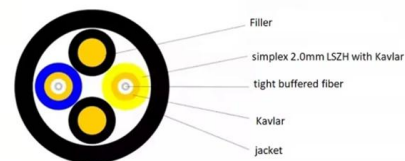
BM (D)X-Series Explosion Protected Distribution Box

BM (D)X-Series Explosion Protected Distribution Box Explosion protection -IECEX (IEC) -ATEX (CENELEC,EN) -China Ex (GB) Application in hazardous area



Basic concepts for explosion protection

Dust layers are liable to begin smouldering on hot surfaces, while a dust cloud which has been ignited locally or through contact with a hot surface can explode immediately.



Explosion proof distribution box standards and installation issues

Measures: In order to ensure safe use, lighting explosion-proof distribution boxes (boards) are required not to be made of flammable materials. Even in dry, dust-free places, wooden explosion-proof



Explosion Protection Methods , Ex p px py pz , Artidor Explosion

Learn about equipment safety in explosive environments. Discover ATEX protection types & explosion protection methods like Ex d, Ex e, Ex i, Ex p and Ex t.

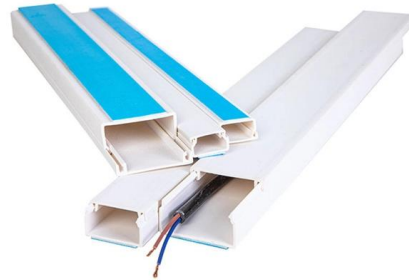


Explosion Proof Box & Cabinet

Product features: The explosion-proof control cabinet (box) can install various instruments inside. Low-voltage electrical appliances, frequency converters, PLCs, soft starters, and computer systems can

Energy Distribution

Choosing the right explosion-protection principle
Our experts have in-depth knowledge and extensive experience in a wide variety of explosion-protection



Overview of Explosion Protection Techniques

Basic concept: Ex n consists of several sub types of protection. In most cases being simplified versions of existing types of protection: Basic design is: safety by either limitation of radiation or protection of



Full Guide on Explosion-Proof Distribution Panel

Explosion-proof distribution panels are vital components in hazardous industrial environments, ensuring safety by preventing electrical equipment from igniting



ATEX GUIDE

Electrical or non-electrical equipment used in an area where there is a risk of presence of a flammable atmosphere (gas or dust) - are popularly called "Ex-equipment" or equipment for use in Hazardous



Denmark Explosion-proof Power Distribution Boxes Market: A

Over 150 biogas plants in Denmark, with projected CAPEX exceeding EUR500 million by 2027, will rely on explosion-proof boxes for reliability and operational safety.



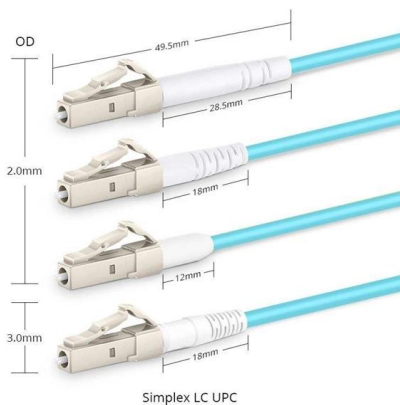
Principle and applicable area of explosion-proof distribution box

Explosion-proof distribution boxes aren't just metal containers; they're engineered life-savers designed to contain potential disasters before they start. When lives and million-dollar



Understanding Different Explosion-Proof Methods for Control Boxes

Explosion-proof control boxes are essential for ensuring safety in hazardous environments where explosive gases or dust may be present. Various explosion-proof methods are designed to



Explosion-Proof Corrosion-Resistant Distribution Box BXM (D)8030

BXM(D) 8030 Explosion-Proof Corrosion-Resistant Distribution Box, designed for hazard zones, ensures safe power control and prevents ignition risks.



Offshore Wind Substations: Explosion Proof Electrical Distribution

What specific certifications are required for explosion proof equipment on offshore wind platforms? How does salt spray and humidity affect the longevity of electrical distribution boxes in



5 Key Factors to Consider When Selecting Explosion Proof Distribution Boxes

Key Global Standards Explosion-proof distribution boxes must meet strict safety standards to protect people and property in hazardous environments. International standards help

Explosion Proof Enclosures

Ex-Proof & Flameproof Junction Boxes & Enclosures Supermec ATEX Junction Box & Enclosures are designed to satisfy most of our clients' requirements for CONTROL explosion-proof and flameproof



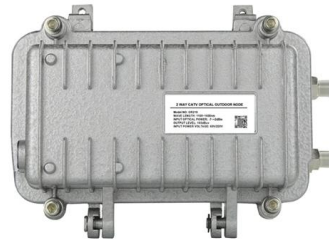
Helon BJX Terminal Box Explosion Proof

Terminal Box Explosion Proof Explosion Protection IECEx (IEC) ATEX (CENELEC, EN) China Ex (GB) Ex Marking Ex d IIB T6 Gb, Ex d IIC T6 Gb (Gas) Ex tD A21



Explosion Proof Power Distribution Boxes

Flameproof and explosion proof, these power overhaul distribution boxes are suitable for use in hazardous areas. Specs: Ex mark: Ex de IIC T4 Gb DIP A21 TA,T4



Top 3 Facts About Explosion Proof Distribution Box & Electrical

Explosion proof distribution boxes and electrical enclosures are critical components for ensuring safety in hazardous environments. They are designed to contain internal explosions and

Dust Explosion-Proof Power Distribution Panel vs. Standard

Standard power distribution panels do not have the same protective features as dust explosion-proof panels. They do not typically contain additional seals or coatings designed to minimize the risk of



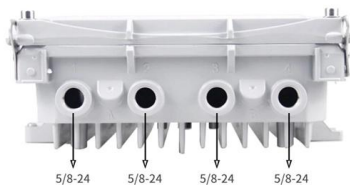


Power Distribution Box Essentials: Functions, Types

Explosion-Proof Distribution Box Meant for the most dangerous areas such as chemical plants, oil refineries, and mining sites. Ensures ready inerting of

Distribution Boxes HRMD96 Series Explosion-proof Distribution Panels

·Equipped with specialized hinge structure, which can prevent the flameproof joints from damage when opening and closing the box, and greatly prolong the service life of box. The boxes can be combined



Special requirements for cable laying and distribution box installation

Sealed with explosion-proof cable glands at every entry/exit point Minimum 0.15m clearance from floor levels Tray Systems : Only in Zone 2/22 areas Non-combustible materials with

Explosion-Proof Electrical Box: Principles, Selection, and Industrial

Explosion-proof electrical boxes are specialized enclosures or control boxes used in flammable and explosive environments. They prevent sparks, arcs, or high temperatures generated



Dust Explosion Mitigation & Prevention Guide

Anatomy of a Dust Explosion A combustible dust is defined as a finely divided combustible particulate solid that presents a flash fire or explosion hazard when suspended in air. Particle Size and Moisture

Contact Us

For datasheets, pricing, or custom telecom energy solutions, please visit:
<https://www.koskolong.co.za>