



Adam Tas Corridor Energy

Principle of Diode Laser Pointer Manufacturing

Pre-Terminated Patch Panel



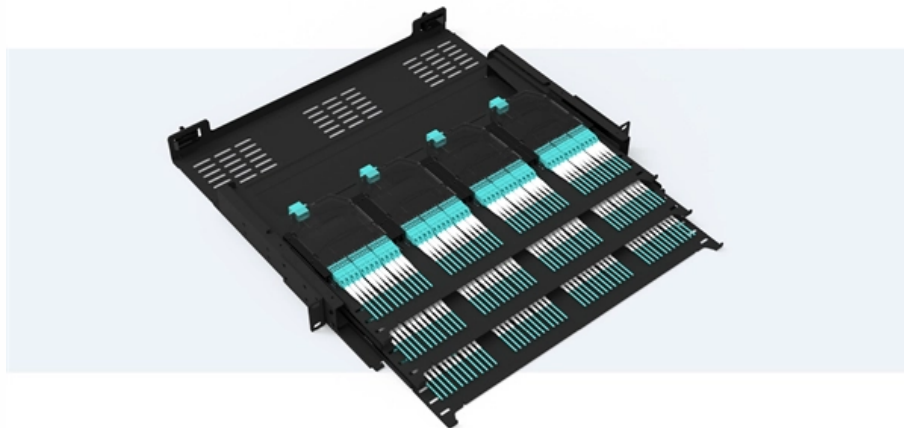
Standard 19" width



Max 144 fibers in 1U



Ultra-High Density Ready



Dual-rail, easy install & maintain



Lightweight ABS MPO cassette



Premium sheet metal with matte coating





Overview

Unlike a regular diode, the goal for a laser diode is to recombine all carriers in the I region, and produce light. OverviewA laser diode (LD, also injection laser diode or ILD or semiconductor laser or diode laser) is a device similar to a in which a diode pumped directly with electrical current can create.



Principle of Diode Laser Pointer Manufacturing



Laser Pointer Circuit and Working with Applications

Laser Pointer is a hand held device that consists of laser diode which emits a ray of laser beam. Know about steps to make a laser pointer with applications

Semiconductor Diode laser: Principle, Construction,

Semiconductor Diode laser: Definition: It is specifically fabricated p-n junction diode. This diode emits laser light when it is forward biased. Principle: When a p-n



Laser Diode: Working Principle, Diagram & Applications

A laser diode is a specialized semiconductor device that emits highly directional, coherent light through the process of stimulated emission. Unlike conventional light-emitting diodes (LEDs), which produce

Laser Diode

Laser diodes are broadly utilized in different applications, including media communications, laser pointers, optical capacity gadgets, clinical

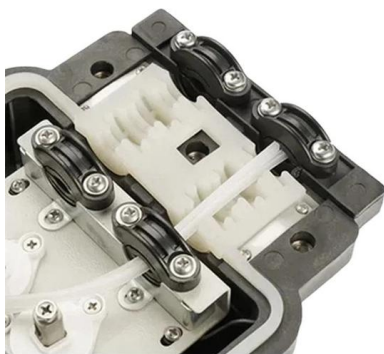


Laser Diode

A laser diode (LD) is defined as a forward-biased semiconductor diode that emits coherent light when an electrical current stimulates recombination of electrons and holes at the p-n junction. It consists of

Laser Pointers Selection Guide: Types, Features,

Laser pointers (sometimes known as laser pens) are compact, handheld laser devices. They are typically used to highlight an object or point of interest by



Chapter 1 Laser Diode Basics

Laser diodes also have large manufacturing tolerances compared with other types of lasers. Therefore laser diodes of the same type can behave a little differently, in terms of wavelength, power,



How Laser Diodes Work

In this The Learning Circuit lesson, Karen teaches about laser diodes. She begins by explaining how a standard PN diode works. However, laser diodes are PIN



Laser Diode Technology 101: What is it & How it Works

Laser Diode Technology 101: What is it & How it Works Learn about laser diode technology, including history, construction, & applications - everything you need

Chapter 1 Laser Diode Basics

Laser diodes are unique compared with other types of lasers. A little background knowledge of laser diodes will be helpful for the readers to understand the contents of this book. We will only briefly



Laser Diodes: Definition, Types, and Applications

A laser diode is a semiconductor device that emits coherent light via stimulated emission, which is more complex and responsive than a light-emitting



Diode Lasers: Definition, How They Work, Types,

A laser diode (or diode laser) is a semiconductor device that undergoes stimulating emission to emit coherent light. Laser diodes offer high

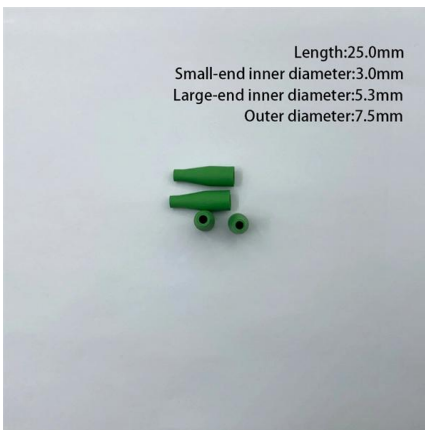
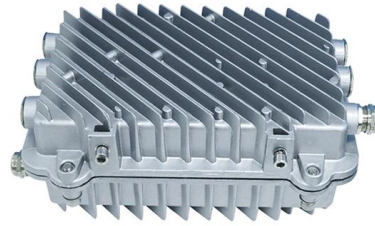


Semiconductor Laser: Construction, Working Principle,

Understand Semiconductor Laser (Laser Diode) with construction, working principle, energy band diagram, and applications. Easy exam notes with diagrams.

Laser Diode

Laser diode similar to LED is used for producing light but the light is coherent and focused at a small point. It was invented by American physicist Theodore H.



Laser Diode

Laser diode operates on the principle of stimulated emission, amplifying light within a resonant cavity. Laser diodes come in multiple types,

Mastering Laser Diodes: Principles, Structure, Driver

Whether implementing precision measurement systems, high-speed communications networks, or advanced manufacturing processes, the principles



Construction of a Laser: Understanding Laser Diodes,

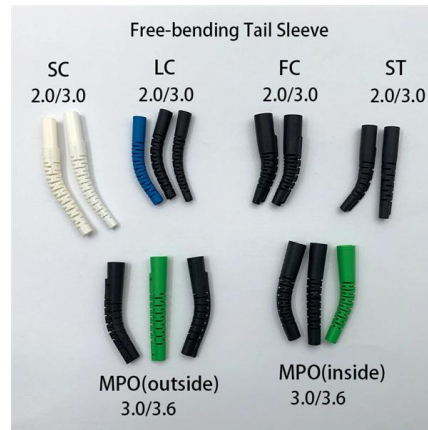
Explore laser construction: laser diodes, fiber lasers, and working principles. Understand the fundamentals of laser system operation.





Laser Diode Basics

A laser diode is a semiconductor device that emits light when an electric current is passed through it. The light emitted by it is very intense and

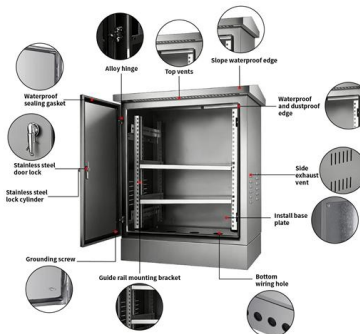


Laser Diodes: An In-Depth Examination of Their

Discover the fascinating world of laser diodes, also known as semiconductor lasers. Learn about their working principles, historical development, types, and their

Laser Diode: Working Principle, Construction, Types,

To operate, laser diodes must induce photon emission at a semiconductor junction. Emissions from a laser diode can be classified into three



Laser Diode Basics , Springer Nature Link

The basic optical, electrical, and mechanical characteristics and the working principles of laser diodes are summarized. Vendors and distributors for laser diodes, laser diode modules, and



How Does a Laser Pointer Work?

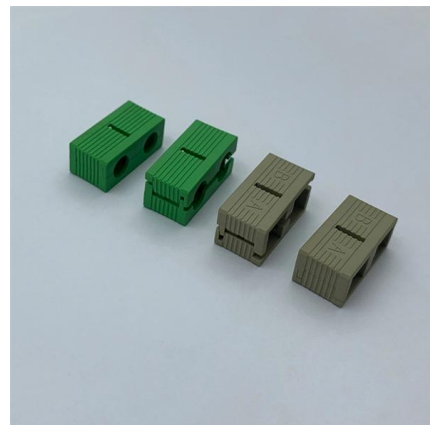
To transform this scattered light into the characteristic tight, parallel pencil of a laser pointer, a system of collimating optics is employed. This optical assembly typically consists of one or



Laser Diode Basics - Principle, Types & Uses

A laser diode is a semiconductor device that emits light when an electric current is passed through it. The light emitted by it is very intense and

Hier sollte eine Beschreibung angezeigt werden, diese Seite lässt dies jedoch nicht zu.





Laser Diodes: An Overview of Laser Diode Technology, Its Working

Explore the significance of laser diodes in modern technology, from their fundamental operation to their applications in consumer electronics. Learn about the types, manufacturing process, and working

Laser Diode

The Laser Diode operates on the same basic principle as a Light Emitting Diode (LED) -- the phenomenon of Electroluminescence, where a



What are Laser Diodes? , TechWeb

A laser diode (semiconductor laser) is an electronic component that generates laser light by converting electric current into light using a semiconductor p-n junction.

Laser diode , How it works, Application & Advantages

In this article, we will explore the basics of laser diodes, their working principle, and some of the most prominent applications that have emerged in



Mastering Laser Diodes: Principles, Structure, Driver

A complete engineering guide to laser diode fundamentals. Explore the working principle, heterostructure design, essential driver circuits, thermal

Contact Us

For datasheets, pricing, or custom telecom energy solutions, please visit:
<https://www.koskolong.co.za>