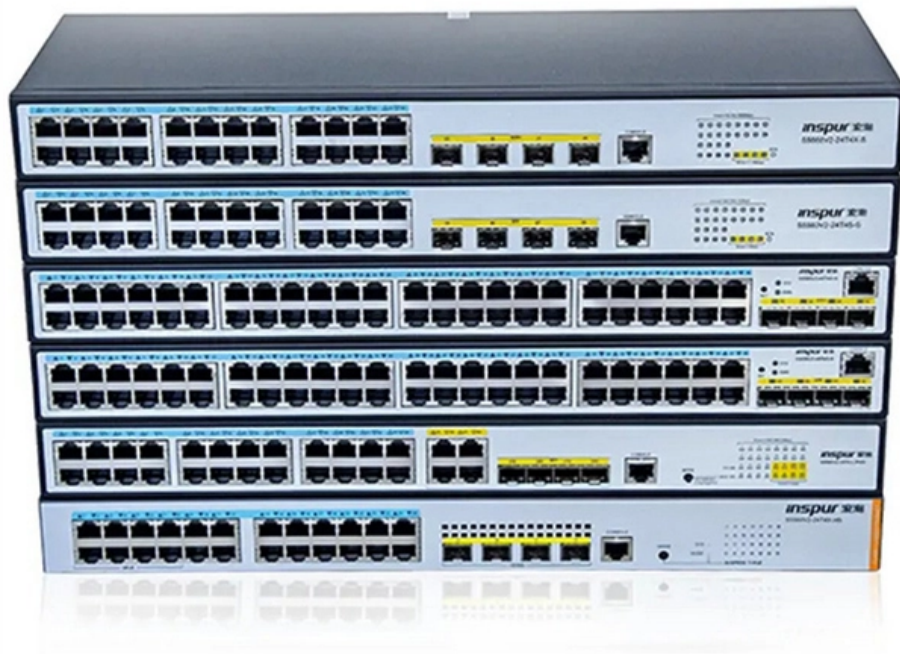




**Adam Tas Corridor Energy**

# **Principle of Fiber Optic Cable Sheath Monitoring**





## Overview

---

A new method for permanent sheath current monitoring is introduced, which uses fibre-optic distributed acoustic sensing (DAS). With the usage of insulated HVAC power cables, a comprehensive monitoring solution is becoming increasingly important - one that computes cable ratings based on thermal profiling (RTTR), detects and locates cable hot spot temperatures (Distributed Temperature Sensing - DTS) as well as cable faults.

Undergrounding power lines avoids exposure to strong winds, limits the cost of damage, provides a more aesthetically pleasing vista in areas where valued, and offers lower fault rates compared to overhead lines. On the other hand, undergrounding is expensive and introduces new hazards such as. Fiber Monitoring is a proven, pro-active, risk-reduction and asset protection approach of pinpointing fiber degradation and breaks that threaten strategic infrastructure providing service to thousands of customers. This document describes the guideline for locating the fault in optical fiber cable after installation or during maintenance of the cable.



## Principle of Fiber Optic Cable Sheath Monitoring

---



### Handbook Optical fibres, cables and systems

The simultaneous availability of compact sources and of low-loss optical fibres led to a worldwide effort for developing optical fibre communication systems. The real research phase of fibre-optic

### Fiber Optic Network Monitoring Systems: Technologies and Methods

Discover the intricacies of fiber optic networks and advanced monitoring systems in this comprehensive guide. Learn about key technologies like Optical Time-Domain Reflectometry



### Recent Progress of Fiber-Optic Sensors for the

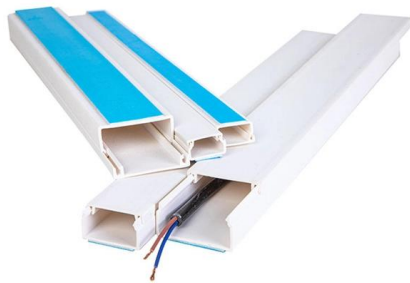
Classification and Principles of Fiber-Optic Sensor (FOS) The working process of the optical fiber sensor includes but not limited to the monitoring of

### What is Fiber Optical Monitoring?

A fiber monitoring system is a set of devices and software that are used to continuously monitor



the health of a fiber optic network. The system typically includes optical time domain reflectometer



### Cable Sheath Monitoring Systems : r/FiberOptics

Anyone want to relate stories of the effectiveness of cable sheath monitoring systems on their networks? In my own experience, they are a big fat dud. We use a

### The Importance of Fiber Monitoring

Also referred to as a Remote Test Unit (RTU), this rack mount OTDR is programmed to routinely monitor fibers for anomalies or degradation that can impair optical signals, with the help of an optical switch.



**EFFICIENT FIELD TERMINATION**

- 1. PREPARE** - Strip and clean the fiber
- 2. INSERT** - Fast and easy insertion
- 3. LOCK** - Secure connection achieved

**No Polishing | No Epoxy**

Eliminates cable excess length and pigtail splice storage. Designed for high-efficiency onsite installation.

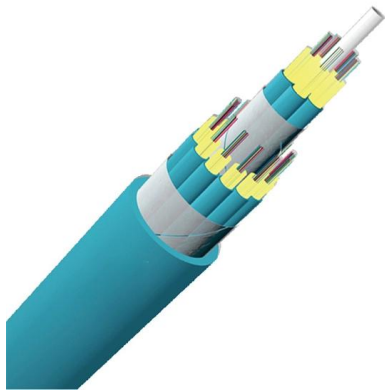
### (PDF) Selection and Characterization of Fiber Optic

Selection and characterization of fiber optic sensors for improved offshore structural health monitoring Muneesh Maheshwari, Lei Wu, Yuan Yao,



## The Benefits of Remotely Operated OTDRs for Submarine Cable

Added to classical submarine cable construction, very standard optical fibers added into the cable polyethylene outer sheath could serve as sensors, and work in conjunction with OTDR remote test



## Review Measurement of cable forces for automated monitoring of

Abstract Fiber optic sensors represent an innovative technology for automated measurement of cable forces which are critical in construction and operation of many civil

## Fiber Optic Sensors for Structural Health Monitoring

Conclusion and Future Developments Fiber optic sensors have become indispensable tools in structural health monitoring, offering distributed sensing



## 213\_Sheath Current Monitoring

A new method for permanent sheath current monitoring is introduced, which uses fibre-optic distributed acoustic sensing (DAS). Fully passive current sensors and signal transducers installed at



## Recent Progress of Fiber-Optic Sensors for the

The purpose of this review article is devoted to presenting a summary of the basic principles of various fiber-optic sensors, classification and principles of FOS,



## Fibre-optic sensor and deep learning-based structural health monitoring

Fibre optic-based monitoring systems have recently been developed and deployed with great success. OFS can be very durable and long-lasting in the most demanding environment when

## The Importance of Modern Fiber Optics Monitoring

VeEX fiber monitoring systems are totally scalable based on customer applications and budget. Solutions can range from a single, standalone RTU that monitors a



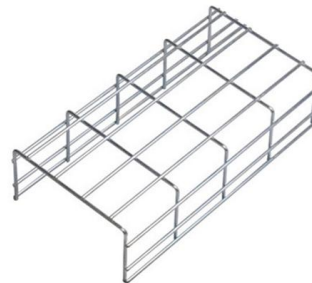


## The Benefits of Remotely Operated OTDRs for Submarine Cable

Most cables will nevertheless integrate an electrically conductive material, copper sheath or tape, to propagate high-voltage injection of tones in order to track the cable route from the vessel, and help

### US6657436B1

This invention relates to a technique for monitoring the metallic sheath of an optical cable fiber prior to service on the cable. a typical optical fiber cable for carrying communications traffic includes one or



## What are Fiber Optic Testing and Maintenance

Conclusion Fiber optic testing and maintenance protocols play a vital role in optimizing network performance and ensuring reliability. Regular testing and

## Fiber Optic Sensing Technology and Vision Sensing

In recent years, the development of fiber optic sensing technology and vision sensing technology has led to further advances in structural health



### **Advanced Cable Monitoring Techniques For Earlier Failure Warning**

Remote condition monitoring of a cable's structural integrity can be achieved through fibre optic-based distributed sensing technologies, and this has proved valuable based on global market adoption in



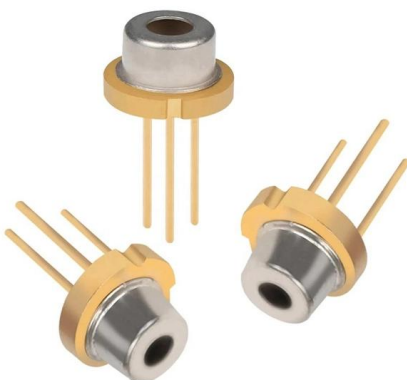
### **Case Study FbCM Sheath Current B rugg\_2023-06\_EN**

Since its installation in August 2022, AP Sensing's FbCM system has been continuously monitoring sheath currents of the 110 kV cable at two cross-link boxes. In this installation we also monitor



### **213\_Sheath Current Monitoring**

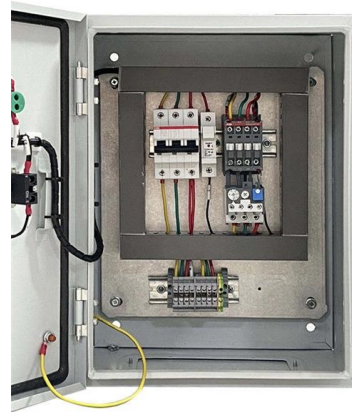
Distributed fibre-optic sensing (DFOS) systems like distributed temperature sensing (DTS) or DAS are meanwhile widely used in power cable monitoring [2, 3] as they can efficiently monitor the entire





## 213 Sheath Current Monitoring

A new method for permanent sheath current monitoring is introduced, which uses fibre-optic distributed acoustic sensing (DAS). Fully passive current sensors and signal transducers installed at



## Review Measurement of cable forces for automated monitoring of

Measurement of cable forces by using point and distributed fiber optic sensors is reviewed. Fiber optic sensors measure the cable force along cable length in construction and operation.

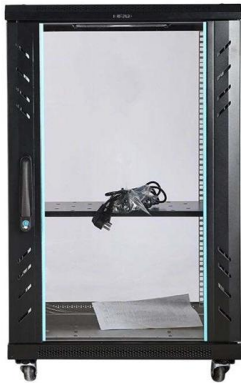
## Basic Components of a Fiber Optic Cable

This article examines the key components that make up a fiber optic cable including the core, cladding, coating, strengthening fibers and cable jacket.



## Optical Fiber-Based Structural Health Monitoring:

Structural health monitoring (SHM) plays a vital role in ensuring the safety, durability, and performance of civil infrastructure. This review delves into



### **(PDF) Design of an automatic system for monitoring the technical**

This paper suggests a monitoring principle based on recording additional optical losses arising from microbending of the optical fiber, followed by image processing on a high-resolution photo



### **Advanced Cable Monitoring Techniques For Earlier Failure Warning**

Condition monitoring limitations Remote condition monitoring of a cable's structural integrity can be achieved through fibre optic-based distributed sensing technologies, and this has proved valuable

### **A review of previous studies on the applications of fiber optic sensing**

In this paper, the working principle of different fiber optic sensing technologies, the development of fiber optic-based sensors, and the recent application status of these sensing





## Case Study\_FbCM\_Sheath\_Current\_Brugg\_2023-06\_EN

AP Sensing, together with Brugg Cables, performed study to measure sheath currents with the aim of electrical condition monitoring of the operator's asset. AP Sensing's sheath current monitoring

## Optical Fiber Cable-Fault Location Detection Procedure

This document helps in finding out the most accurate sheath distance where fault has occurred in the cable. The method is suitable for all types of optical fiber cables and is independent of index of



## Contact Us

---

For datasheets, pricing, or custom telecom energy solutions, please visit:  
<https://www.koskolong.co.za>