



**Adam Tas Corridor Energy**

# **Purpose of checking relay protection switchboard**





## Overview

---

These tests are done to show that protection relays are free from defects during manufacturing process. Substations and switchgear in an electrical system perform the functions of voltage transformation, system protection, power factor correction, metering, and circuit switching. They safeguard equipment, prevent outages, and ensure the stability of power systems by detecting faults and isolating affected sections. Long term cost reduction (TCO) for trainings and maintenance by reduce variety of relays A fast and selective arc fault mitigation for air-insulated LV & MV switchgear and Relion protection and control relays and sensor. It is not simply flicking switches or if a breaker will trip or not — it's checking that every component responds correctly in different situations, especially.



## Purpose of checking relay protection switchboard

---

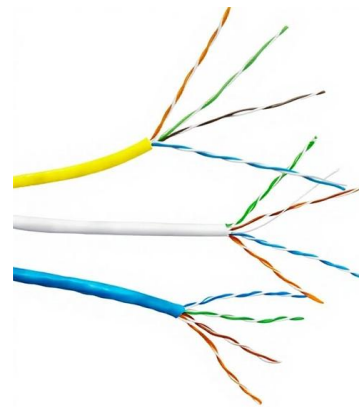


### Testing & Commissioning Protective Schemes

The purpose of the commissioning tests is to ensure that connections are correct, that the performance of current transformers and relays agrees with

### Relay Maintenance and Testing

With microprocessor relays, the built-in, self-testing features can be expected to reveal most faults, but this alone does not meet regulatory requirements or cover the other components involved in the



### Switchgear Inspection and Testing

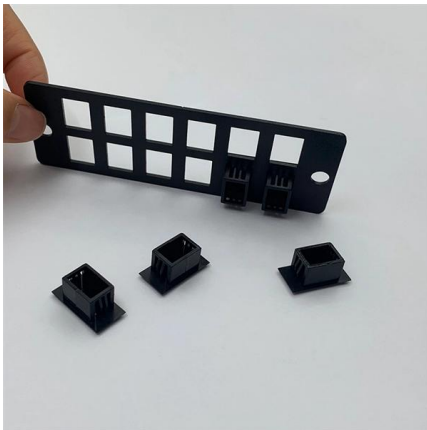
Definition and Purpose Electrical Switchgear refers to a centralized collection of circuit breakers, fuses, and switches (circuit protection devices) that function to

## INSPECTION, TESTING AND COMMISSIONING OF ELECTRICAL

The Program need to have a thorough understanding of switchboards, switchgear,



circuit breakers and associated protective relays. The overall focus of this workshop is on electrical inspection, testing and

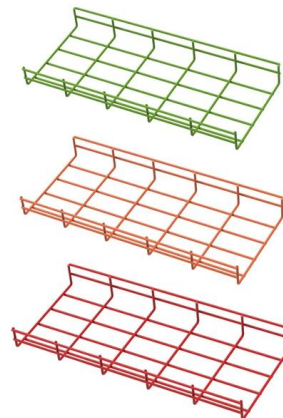


## How to Conduct Relay Protection Testing and Troubleshooting: A

Relay protection systems are the unsung heroes of electrical networks. They safeguard equipment, prevent outages, and ensure the stability of power systems by detecting faults and

## Protective Relay Basics

Traditionally, protective relays were electromechanical devices utilizing induction disk, coils, contacts, and solenoid elements to determine protective characteristics.



## Keeping electrical switchgear safe HSG230

75 Periodic testing of the protection relay scheme is a separate requirement to the maintenance of switchgear, and is needed to ensure the integrity of a system.

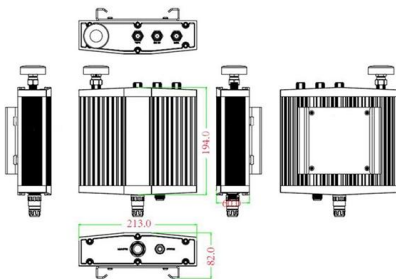


## How to Conduct Relay Protection Testing and Troubleshooting: A

However, like any critical component, relay protection systems require regular testing and troubleshooting to maintain their reliability. Whether you're an electrical engineer, a technician, or a



Mechanical drawing



## Marine Electrical Main Switchboard Essentials

Protection Against Electrical Faults The main switchboard provides protection against electrical faults and overloads through a combination of circuit breakers, protective relays, and other

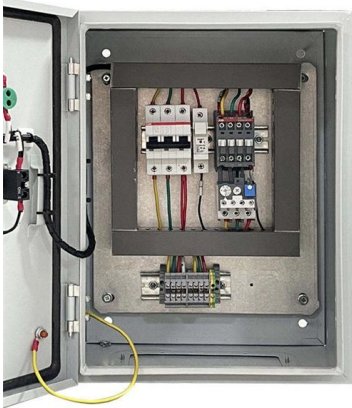
## Switch Board On Ships: The Best Electrical Guide Of 2024

Switch Board On Ships A ship switchboard is the central nervous system of a vessel's electrical distribution network, responsible for controlling and



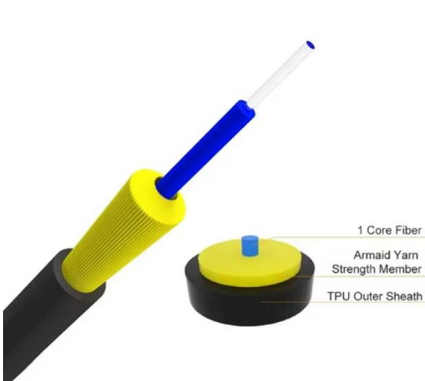
## Basic protection relay knowledge

Protection is needed to detect electrical faults and abnormal operating conditions. Protection is also needed for protecting people and property around the power network. The protected zone is the part



## Complete Guide to Switchboards: Types, Tech & Safety

Arc flash relays quickly detect and respond to dangerous electrical arcs, preventing potential fires or explosions. Benefits of Protection Relays The



## Function checks on protective relaying trip circuits

Often, each electrical component is tested individually, and only small outages are required to allow for this testing. During a shutdown or turnaround is a great time to test the

## Protection Relay Types and Testing Procedures

These devices safeguard assets and maintain power stability by swiftly detecting and isolating faults. This guide explores the different types of





## Power System Protective Relays: Principles & Practices

Protective relays and devices have been developed over 100 years ago to provide "lastline" of defense for the electrical systems. They are intended to quickly identify a fault and isolate it so the balance of

## Everything You Need to Know About Electrical

When dealing with a power setup, one small mistake in choosing the switchboard box can lead to expensive repairs, safety concerns, and



## Testing and Calibrating Protective Relays for Substation Technicians

Master testing and calibrating protective relays in electric power substations with data-driven insights from DataCalculus.

## Protection Relay Testing and Commissioning

Since type testing of a digital or numerical protection relay includes software and hardware testing, the type testing procedure is very complex and more challenging than a static or electromechanical relay.





## Testing & Commissioning Protective Schemes



Generally protective equipment testing may be divided into three stages: Factory tests. Commissioning tests. Periodic maintenance tests. Factory

## Switchgear and Switchboard Inspection and Testing Guide

The purpose of this test is to identify any insulation weaknesses, such as cracks, pinholes, or moisture ingress, which could compromise the integrity and safety of the control wiring.



## Protection Relay Testing and Commissioning

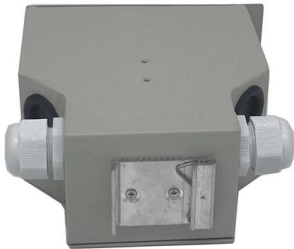
Type tests are needed to prove that a protection relay meets the claimed specification and follows all relevant standards. Since the basic function of a protection relay is to correctly function under

## Relay Testing Procedures , Delgado Relay Protection Reference

Functional Testing: The initial step in relay testing involves functional testing, which verifies the proper operation of the relay's basic functions. This includes checks on the on-off



**MORE CASES  
PRESENTATIONS**



**Relay Testing and Maintenance ,  
Delgado Relay Protection Reference**

In conclusion, relay testing and maintenance are vital for ensuring the reliable operation of protective relays in power systems. Through testing, we can assess their performance and

**Electrical Inspector's Guide to Relay  
Inspection**

The Importance of Electrical Relay Inspections  
Electrical relays serve as the switchboards of modern electrical equipment. They not only control the flow of power but also incorporate fail-safes that



**Functional Switchboard Testing -  
What do we check?**

It is not simply flicking switches or if a breaker will trip or not -- it's checking that every component responds correctly in different situations, especially when faults or emergencies arise.



## Operation, maintenance, and field test procedures for

Operation, maintenance, and field test procedures for protective relays and associated circuits (photo credit: Omicron) The protection circuits



## Contact Us

---

For datasheets, pricing, or custom telecom energy solutions, please visit:  
<https://www.koskolong.co.za>