



Adam Tas Corridor Energy

Quick Marking of Revit Cable Trays





Overview

From the Type Selector, select the cable tray type, with or without fittings. This lesson is a preview from our Revit Certification Course Online (includes software & exam). This lesson walks through how to start a project and properly set up for Electrical Cable Tray design in Revit 2025.



Quick Marking of Revit Cable Trays

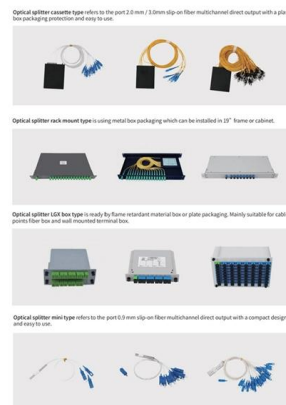


16 Revit Electrical , Cable Tray & Conduit System Design

In this tutorial, we will cover the Cable Tray & Conduit System Design in Revit Electrical. Learn how to efficiently model and route cable trays and conduits for an optimized electrical system

Cable Tray Tag In Revit MEP,,Annotation In Revit

Click Systems tab Electrical panel Cable Tray. From the Type Selector, select the cable tray type, with or without fittings. On the Options Bar, specify the width, height, offset, or bend



Learn REVIT Fast LRF-ELEC-01-03 - Cable Tray

Adding Cable Tray Demonstrates how to place straight cable tray runs in a floor plan view. Shows the properties palette where tray size, system type,



Cable Tray Settings

Cable Tray Size Separator - Specifies the symbol to be used in showing cable tray sizes. For example, when an x is used, a cable tray that is



12 inches high and 4 inches deep would be shown as 12" x 4".



Cable Tray and Conduit

Add Cable Tray Fittings As you draw cable tray, Revit automatically adds fittings. Use the following procedure to manually add cable tray fittings to an existing segment or run.

Modeling and Coordinating Cable Tray Systems in Revit

Understand how to model a cable tray using the systems tab in the electrical section for effective coordination, especially in the electrical room. Learn



Introduce cables not just wires

REVIT have skipped modeling feeders for a long time, since 2018 version being able to connect two panels and adjust the connection length is



Revit 2023 MEP cable tray routing

Smart Detailing in Revit Tutorial , Advanced Revit Course 15 See What a REAL Revit Electrical Project Looks Like!! How to use Filters in Cable tray,, Revit Tutorial ,, Electrical Revit,,



Ep-134 # How to create Cable Tray and Trunking Tag

Ep-9 # How to create Central file and local file in Revit Worksets , #Revit#AutoCAD#Navis Ep-40 # How to create Channel Support for Duct, Cable

Revit Review

Cable Trays are one of the systems where you really want other disciplines to know they are there. Route them in Revit so they are dimensionally accurate and allow the contractor to understand the



AutoCT , Revit , Autodesk App Store

Automatically calculate cable tray size, weight & fitting bending radius and update circuit routing in the Autodesk® Revit® model.



Autodesk

An error occurred while loading this content. Reload the page to try again. If you continue to have trouble viewing this content, contact Autodesk Support.



Mastering Electrical Cable Tray Riser Design In Revit!

Certainly! Creating an electrical cable tray riser in Revit is a crucial aspect of designing efficient and organized electrical systems within a building.

CABLE TRAY TAGGING SAMPLE

Can some one show a sample cable tray tagging for vertical trays (i.e to above, to below)



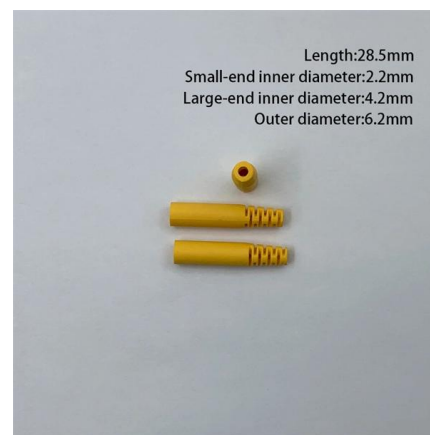


QUICK TRAY PRO(TM) and Ladder Rack Cable Pathway

The QUICK TRAY PRO(TM) cable tray routes cables through unused space while keeping them accessible for easy maintenance. Combine components to

Draw Cable Tray

On the ribbon, select placement options. In the drawing area, click to specify the start of the cable tray run, then move the cursor and click to specify points along the



Help , Video: Place Cable Tray , Autodesk

When you use Revit to design an electrical power system, you can model cable tray in your design. Currently in Revit, cable tray elements are not part of the electrical system and do not provide



CABLE TRAY TAGGING SAMPLE

Here is a tag that you can bring into your job that will work with comments. This is version 2021 by the way. It will work on revit 2021 or later.

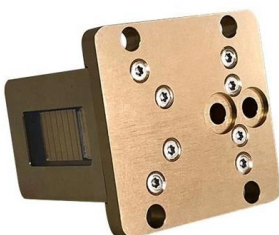


Revit Cable Tray Cable Tray Cable Calculations In Revit

Revit can perform these calculations based on the load classifications you assigned to the cable tray and the sizes of cables.

Electrical: Use cable trays

Cable tray in Revit went from non-existent to pretty awesome. What this video will illustrate is how to run a ladder cable tray. We will run the tray at different elevations, and will create T



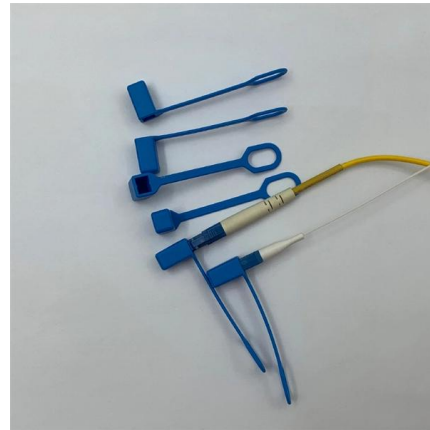
Metatray® Insulating Cable Tray System: Application

This application guide is intended to assist users in incorporating Pemsas insulating cable tray systems into their own projects. To do so, users



Cable Tray Settings

Cable Tray Size Suffix - Specifies the symbol appended to the cable tray size. Cable Tray Connector Separator - Specifies the symbol used to separate information between 2 different connectors.



Adding Cable Tray in Revit

The videos featured in this article demonstrate how to: Model cable tray vertically and horizontally along a wall. Modify cable tray fittings in tight spaces. Introduction to Adding Cable Tray in

Revit

Revit - How to Draw Cable Tray in Wall in Easy Way SL - Engineering Solutions 3.94K subscribers
Subscribe



Ep-132 # Cable tray & Trunking Modeling , Filter by

Ep-40 # How to create Channel Support for Duct, Cable Tray and Other services , in Revit Ep-43 # How to Tag Duct , Duct Tag Family for Annotation in Revit Part - 1



Learn REVIT Fast LRF-ELEC-01-03 - Cable Tray - Revit news

This lesson walks through how to start a project and properly set up for Electrical Cable Tray design in Revit 2025. It focuses on template selection, component availability, and basic setup steps.



Draw Cable Tray

On the ribbon, select placement options. In the drawing area, click to specify the start of the cable tray run, then move the cursor and click to specify points along the run. A bend is automatically added to

Setting Up Cable Tray in Revit MEP: A Step-by-Step Guide

Walk through placing cable tray in Revit MEP--loading fittings, setting routing preferences, drawing runs across floors, and resolving clashes with ducts and conduit.

02

High Quality Material



High hardness to resist external impact, Good Shaping Performance, Good Look and Anti-rust





Contact Us

For datasheets, pricing, or custom telecom energy solutions, please visit:
<https://www.koskolong.co.za>