



Adam Tas Corridor Energy

Reasons for large optical attenuation in beam splitters





Overview

Signal attenuation refers to the reduction in the intensity of a light beam as it passes through a medium or a device. In the context of beam splitters, attenuation can occur due to several factors, including absorption, reflection, and scattering. Beam splitters are optical devices that play a crucial role in various scientific and industrial applications.



Reasons for large optical attenuation in beam splitters



A study on the optimal incident angle of sub-wavelength grating

This work transforms the sub-wavelength etched grating into an optical-thin-film-structure model and applies the design method of polarization beam splitting of optical films to the grating.

Beam splitter , Description, Example & Application

A beam splitter is an optical device that splits a single beam of light into two or more beams. It is commonly used in scientific and industrial applications.



Common Splitter Failures: Optical and Structural Causes

Engineering analysis of common fiber splitter failures, explaining optical imbalance, packaging stress, and why degradation often appears in FTTH networks.

Beam Splitters

Conclusion Beam splitters are versatile optical components integral to modern technology. Understanding their types, properties, and



applications can significantly enhance the design and

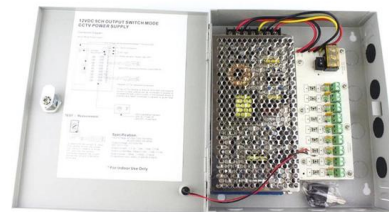


What are the causes for attenuation in optical fibers?

Discover the key causes of attenuation in optical fibers and learn how factors like absorption, scattering, and bending distort signal quality. Explore

Fundamental properties of beam-splitters in classical and quantum optics

A lossless beam-splitter has certain (complex-valued) probability amplitudes for sending an incoming photon into one of two possible directions. We use elementary laws of classical and quantum optics



Beam Splitting

4 Beam modulations 4.1 Beam splitters
Metasurfaces are a solution to the existing problems of conventional beam splitters composed of natural materials [14, 206-212] which impose a relatively



How beam splitters affect signal attenuation and polarization

In the context of beam splitters, attenuation can occur due to several factors, including absorption, reflection, and scattering. When a beam splitter divides the incoming light, some of the energy is



The Ultimate Guide to Optical Signal Attenuation

Introduction Optical signal attenuation is a fundamental limitation in optical communication systems, affecting the quality and reliability of data transmission. As the demand for

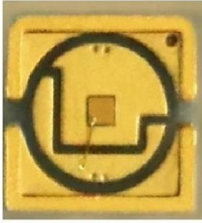
How to Select the Perfect Beam Splitter for Your Optical Setup

The amount of reflected and transmitted light depends on the beam splitter's design and coating. This allows you to control the light distribution in your optical setup. Types of Beam Splitters:



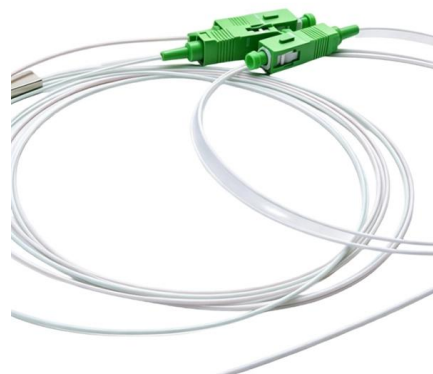
Fiber Attenuation

Fiber attenuation is defined as the reduction of optical power as it travels through a fiber, characterized by the power attenuation coefficient per unit length, α , which varies with wavelength due to factors



How Beamsplitters Work: Principles and Applications

Learn how beamsplitters divide light using partial reflection and transmission, and explore their essential roles in modern optical systems.



No Slide Title

Precision laser applications require fine power control. A variable beam splitter with large dynamic range and precision control is designed to fulfill this purpose. It is suitable for intensity splitting between two

What Are Optical Beam Splitters?

What Are Optical Beam Splitters? Key Takeaways
Beam splitters, essential for applications such as teleprompters and holograms, have different types that play





How does a beam splitter work? Common types and use cases

Understanding Beam Splitters Beam splitters are essential optical components used to divide a beam of light into two or more separate beams. They play a crucial role in various scientific,

Beam Splitters in Quantum Optics

Discover the role of beam splitters in quantum optics, their types, and applications in various quantum systems.



Quality Control of Beam Splitters

The design and manufacture of high quality multilayer optical coatings require accurate measurements of not only the final production component but also the optical constants of the materials in the thin

beam splitters

eam splitters. In this article, we analyze the most general two-port beam splitter which can be lossy, asymmetric and unbalanced, and find the non-trivial constraints on the matrix elements. We derive



Understanding Beamsplitters: A Comprehensive Guide

Beamsplitters play a critical role in a variety of optical applications, splitting or combining beams. They are used in microscopy, laser systems, and



Quantum optics of lossy beam splitters

Beam splitters play important roles in much of optical physics. They are key elements in interferometers, both the classical instruments whose fringes are controlled by first-order coherence and the



Beamsplitters: A Guide for Designers , Optics

Cube beamsplitters Cube beamsplitters have several advantages over plate beamsplitters and are widely used for a variety of reasons. These are rugged





Lecture9: The lossless beamsplitter Lec

probabilities add themselves up. In case of a symmetric beam splitter, we can visualise the possible paths that the two photons can take (see Fig. 14). The two photons, here labelled in green and red



Beam Splitters - optical power splitter, beamsplitter, thin-film

Generally, cube beam splitters cannot tolerate a high optical powers as plate beam splitters, although optically contacted cubes can also exhibit substantial power handling capabilities.

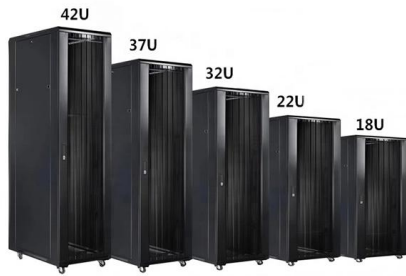
The Theory of the optical wedge beam splitter

This paper gives the basic theory for computing the ratio of the intensity of the incident beam to the intensity of any selected emerging beam and also for computing the direction of the emerging beam,



The Ultimate Guide to Attenuation in Optical Fibers

Discover the intricacies of attenuation in optical fibers, its impact on signal quality, and effective strategies for minimizing signal loss to ensure reliable data transmission.



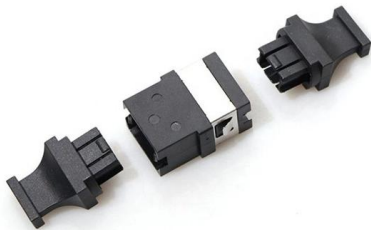
What are Beamsplitters?

Optical components that create two beams by splitting incident light are beamsplitters. Read more about the different types of beamsplitters at Edmund



How beam splitters affect signal attenuation and polarization

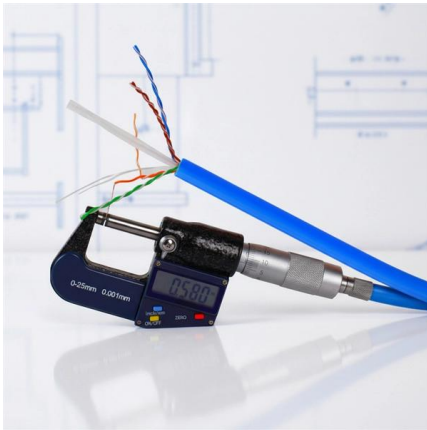
In the context of beam splitters, attenuation can occur due to several factors, including absorption, reflection, and scattering. When a beam splitter divides the incoming light, some of the



Fundamental properties of beam-splitters in classical

Chapter 5, section 1, describes the properties of beam-splitters and their application in quantum-optical experiments. Quantized radiation states and





Photonics 101

As the name suggests, a beam splitter refers to an optical device which is used to split or divide a beam of light into two. A beam splitter is usually the cornerstone of most interferometers.

The Buyer's Guide to Beam Splitters , Blue Ridge Optics

Beam splitters are the unsung heroes of the optics world. These optical components divide incident light into two distinct beams: one reflected and one transmitted. This precise ability to



Contact Us

For datasheets, pricing, or custom telecom energy solutions, please visit:
<https://www.koskolong.co.za>