



**Adam Tas Corridor Energy**

# **Recommended Bridge Structures in Mali**





## Overview

---

The Martyrs Bridge (Pont des martyrs) of, connects the older sections of the city to its suburbs on the south shore of the. One of three road bridges across the Niger at Bamako, it is also known as the "Old Bridge".



## Recommended Bridge Structures in Mali

---

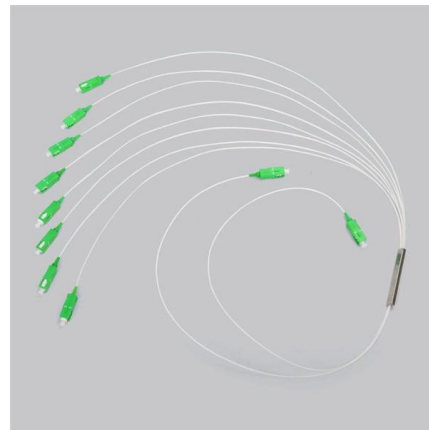


### Recommended Guide Specification for the Design of Externally

TRB's National Cooperative Highway Research Program (NCHRP) Report 655: Recommended Guide Specification for the Design of Externally Bonded FRP Systems for Repair and Strengthening of

### Rolling width Transverse slope

Rolling width : 7 m Sidewalk width : 2 x 1.50 m  
Transverse slope : 2.5 Variants having been the subject of the detailed preliminary design :  
Construction of a new structure with the 2 following variants :



### 260 Bridge Structures

General The design criteria presented in this chapter apply to bridge structures on arterials, collectors, and Limited Access Facilities. Criteria regarding lanes, medians, and shoulders

### List of Bridges in Mali

The King Fahd Bridge (Pont Roi Fahd) of Bamako, Mali connects the older sections of the Malian capital to its broad suburbs on the south shore of



### **Bridges & Flyovers Manufacturer, Supplier & Exporter in Mali**

Does ASEFS provide customized solutions for bridges and flyovers in Mali? Yes, ASEFS offers customized fabrication and structural solutions for bridges and flyovers in Mali, tailored to project



### **The World Bank Supports the Connectivity and Resilience of Road**

"The rehabilitation of the deteriorated sections will improve the resilience of the national road network, given the critical importance of the Bamako - Dakar Corridor for connectivity," said



### **World Bank Document**

The proposed Mali'oli'o bridge site is unoccupied on the riverbanks where the abutments lie, devoid of crops or other economically valuable trees or any other physical asset of value, or source(s) of





## Mali Connectivity and Road Resilience Project

Building on the World Bank's CCDR for the Sahel, GCA will quantify direct and indirect climate risks--particularly those affecting road reliability, rural

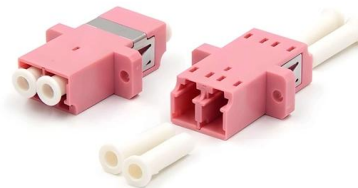


## Bridges & Structures

Under the Federal-Aid Highway Program, FHWA annually distributes funding of approximately \$7 billion to assist transportation agencies plan, design, build, repair, rehabilitate, and

## Introduction to Innovative bridge designs and aesthetic

Bridge: Bridges are critical infrastructure that enable the traversal of natural barriers such as rivers, valleys, and ravines. They're complex structures designed by civil engineers to support the weight of



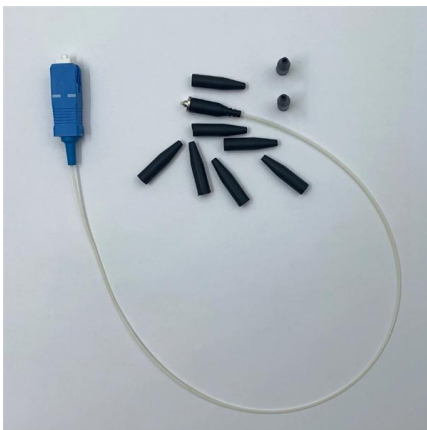
## Bridges: Structures and Materials, Ancient and Modern

PDF , On Jan 16, 2020, Arturo Gonzalez and others published Bridges: Structures and Materials, Ancient and Modern , Find, read and cite all the research you need



## Multinational

For States that have set up 2nd generation road funds (Benin, Côte d'Ivoire, Mali, Togo, Niger and Guinea Bissau), the mobilization and management of financial resources for road maintenance is the



## Bridges: Structures and Materials, Ancient and Modern

Bridges are widely used to cross rivers, valleys, and roads, providing a passage with other parts of the land since ancient times to modernity. Each

## GOVERNANCE STRUCTURES SUPPORT PROJECT (PASG)

1.1 Project Linkages with Country Strategy and Objectives 1.1.1. PASG is aligned with Focus Area 1 of Mali's Strategic Framework for Economic Recovery and Sustainable Development (CREDD), 2019



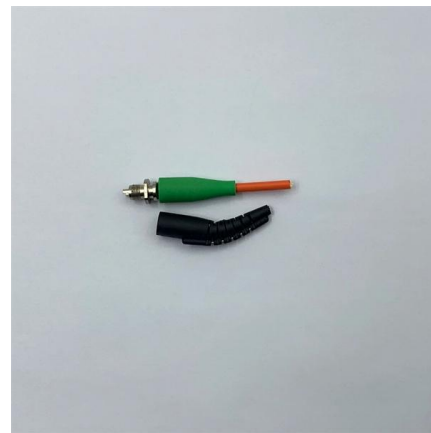


## Mali

The Woyowayanko Bridge - Point Y section, which will become a dual carriageway, is located in the Sébéninkoro neighbourhood, in Commune IV within the Bamako District. It starts from Woyowayanko

## Bridge , History, Design, Types, Parts, Examples,

A bridge is a structure that spans horizontally between supports, whose function is to carry vertical loads. Generally speaking, bridges can be divided into two



## Transport and Infrastructure

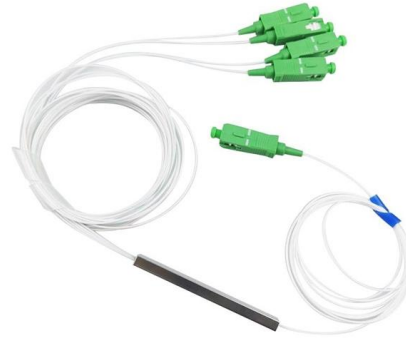
Revitalizing Journeys, Strengthening Foundations: Unveiling Mali's Transport and Infrastructure Landscape through Data Visualization. From road networks to vital structures, our service illuminates

## Martyrs Bridge (Bamako)

The Martyrs Bridge (Pont des martyrs) of Bamako, Mali connects the older sections of the city to its suburbs on the south shore of the Niger River. One of three road bridges across the Niger at Bamako, it is also known as the "Old Bridge". Opened in 1957 when Mali was under French colonial rule, it was renamed the Martyrs Bridge in 1991 following the deaths of protesters



against the rule of Moussa Traoré. Martyrs Bridge



### Category: Bridges in Mali

Wikimedia Commons has media related to Bridges in Mali.

### Literature review of bridge structure's optimization and

Structure's optimization four key steps, including modeling, optimization techniques, formulation of optimization concerns and computational tools, are also



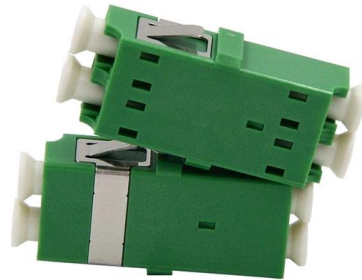
### Mali

The implementation of the Woyowayanko Bridge -Point Y Urban Road Project is in conformity with the objectives of Mali's Growth and Poverty Reduction Strategic Framework (GPRSF) for 2007-2011.



## Category:Transport buildings and structures in Mali

R Railway stations in Mali (1 P) Categories:  
Buildings and structures in Mali by type  
Transport infrastructure in Mali Transport  
buildings and structures in Africa by country  
Transport buildings and



## Kassaro Bridge and the Chinese Fix, Mali's Rail Revival

On August 30, 2024, torrential rains swept through southern Mali, leading to the catastrophic failure of the Kassaro Bridge. Over 100 meters of

## Bridge Engineering - Types of Bridges

Bridge Engineering -Types of Bridges Over the last several thousand years, bridges have played one of the most important roles in the development of



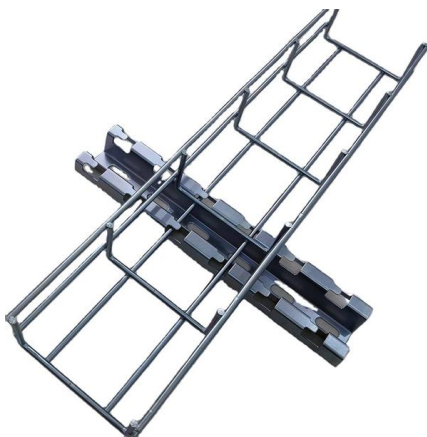
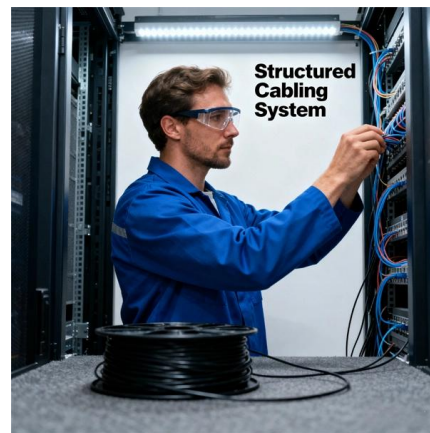
## Mali

As the government seeks to increase economic development in northern Mali, there will be opportunities to support infrastructure development, including buildings, roads, dams, bridges,



### Full article: Approach to Robust and Elegant Bridge Design

That is especially the case in robust design for structures based on the combined strategies recommended in this paper. Structural engineering design is

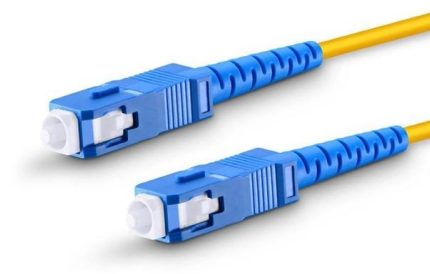


### 260 Bridge Structures

General The design criteria presented in this chapter apply to bridge structures on arterials, collectors, and Limited Access Facilities. Criteria regarding lanes, medians, and shoulders for bridges are

### Category: Bridges in Mali

The following 23 files are in this category, out of 23 total.





## DESIGN OF BRIDGES

In the present handbook, actions on bridges and load combinations according to Eurocode 1\_2 are illustrated, stressing the philosophy and methodological criteria that have brought to the definition of

### Review on Design of Bridge Structures

I. INTRODUCTION Bridges play a critical role in the infrastructure landscape, connecting regions and facilitating transportation. The design and analysis of bridge structures require meticulous



## Contact Us

---

For datasheets, pricing, or custom telecom energy solutions, please visit:  
<https://www.koskolong.co.za>