



Adam Tas Corridor Energy

Recommended Cable Tray Fixing Clips





Overview

Mounting Clamps: These are great for securing cable trays to walls or ceilings. 8 (Other Mechanical Stresses (AJ)) in that document provides requirements for cable support. The 18 th Edition of the IET Wiring Regulations (BS 7671) came into effect in January 2019. Q3 of 5 - What distances are required between fixings and how do you allow for horizontal and vertical distances?

The guidance issued within the On-Site Guide (OSG) published by the IET is helpful in deciding on the nature of cable support and the distances recommended between clips.



Recommended Cable Tray Fixing Clips



Selecting Cable Supports for Wiring Systems - Unicrimp

For example, cable ties would be suitable for fixing cables installed on basket tray or cable tray, whereas cable clips would be suitable for wooden

Cable Tray Clip (Pack of 100)

Cable Tray Clip (Pack of 100) - Trentside Fixings Ltd is a leading distributor of fixings, fasteners, hand tools and power tools to the construction industry and allied trades.



Best practice guide to cable ladder and cable tray

Cable ladder and cable tray systems The following recommendations are intended to be a practical guide to ensure the safe and proper installation of



Cable Tray Installation

Learn everything about cable tray installation with our complete guide. Discover types, steps, and safety tips for efficient electrical cable



Cable Support Distances

This provides distances for cables based on their diameter and cable type. Prysmian was instrumental in providing this information and an extract is provided in this document.

Best Practices for Installing Cables in Trays

Quick Installation Checklist (Key Steps) Cable tray cable installation generally follows these steps: Inspect cables before installation Prepare and



Cable Tray Technical Guide A practical guide to product selection and

Cable Tray Technical Guide A practical guide to product selection and installation This guide for engineers and installers has been developed by ABB as a practical reference regarding cable tray



Cable fixing and the 18th Edition IET Wiring Regulations

Discover the best fixing and mounting options for cable trays and wire mesh basket trays. CMW shares tips for efficient cable management.



Cable Tray Clips , McMaster-Carr

Choose from our selection of cable tray clips in a wide range of styles and sizes. Same and Next Day Delivery.



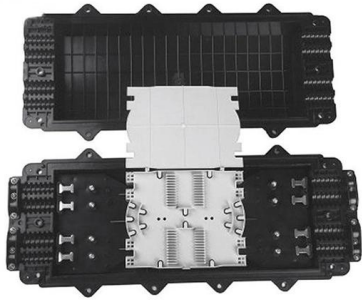
Guide to cable support systems

Widths of 8 and 15 millimetres enable flexible adjustment to different cable trays, cable ladders and cable volumes. With the help of the matching SBV tightening strap locks and 576 spring chuck, the



Cable Tray to Rod Clips , Cable Tray Spring Clips

Rod Clips for fixing small cable containment to threaded rod. Gives a 68mm arm for supporting cable tray, basket or trunking.



Clips for Medium Duty Cable Tray Lid - HDG

The medium duty cable tray lid clips (HDG) are designed to securely clamp lids onto 25mm height cable trays. Providing a reliable fixing for both internal and external



Fixings for electrical cables and other electrical

Solutions for fixing cables and other elements in electrical installations. We have references designed to cover all areas of an electrical installation, whatever the

Cable Tray Supports & Clamps

MP Husky cable tray clamps are the most reliable, highest quality, and cost effective cable tray clamps in the industry. Proper cable tray support is an integral part of any installation, and having the best



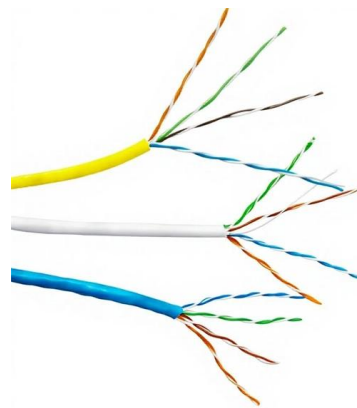


Channel fixing clips , Legrand United Kingdom

Swifts Heavy Duty Steel Cable Tray Channel Fixing Clip 50mm £3.85 / 1 piece Excluding VAT Compare

Supporting Wiring Systems: What You Need To Know

HellermannTyton does not recommend that plastic fixings are used as the only method of fixing and should only be used in addition to sufficient metal



How far apart should cable clips be?

How far apart should cable clips be? 20 February 2023 , Our latest guide looks at the IET Wiring Regulations in relation to the recommended distances between cable clips. What are IET

Cable fixing and the 18th Edition IET Wiring Regulations

When fixing cables to exposed horizontal surfaces, the spacing of metal fixings should be approximately every 300mm. For vertical running cables



GRP/FRP Mita Flex Installation Guidelines

Tips: Recommend to always place the flat surface without perforations of the cable tray on top of the cantilever arm for fixing, Recommended Torque 10 Nm Slide the channel nut through the cantilever



Cable Tray Accessories, Cable Tray Hangers & Support , RS

These fittings are used in conjunction with cable trays to support cables in ventilation holes, assist with directional change of piping systems, and aid cable channelling around obstacles. There are several



18th Edition: How Are Cable Supports Changing?

This will require metal fixings: plastic cable ties and cable trays are not considered appropriate, neither is aluminium because of its low melting point.





The New LINIAN Cable Tray Clip

Sustainability: Like all LINIAN products, the new Cable Tray Clip uses recyclable packaging and ethically sourced materials. Manufactured in Britain it



Best Practice Guide to Cable Ladder and Cable Tray

Cable ladder and cable tray systems The following recommendations are intended to be a practical guide to ensure the safe and proper installation of

Fixings for electrical cables and other electrical

Fixings for all types of electrical installations: profiles and brackets for tubes or cable trays, clamps of different materials, nylon cable ties, etc.



Cable Fixing Distances , Horizontal & Vertical Gaps

The guidance issued within the On-Site Guide (OSG) published by the IET is helpful in deciding on the nature of cable support and the distances



BS7671 - IET Wiring Regulations 18th Edition

HellermannTyton does not recommend that plastic fixings are used as the only method of fixing and should only be used in addition to sufficient metal



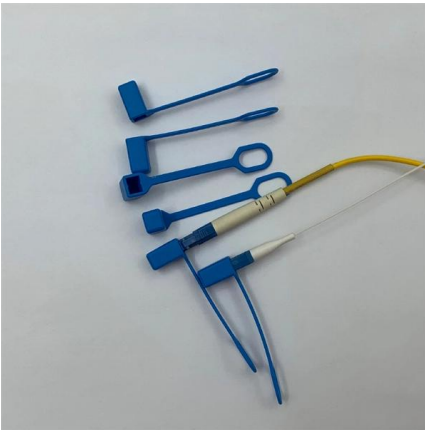
How to select 18th Edition Cable Fixings [A Clear Guide]

Plastic cable ties and clips and plastic cable supports must all be adequately supplemented with metal supports. Once you have selected the most

Best Practice Guide to Cable Ladder and Cable Tray Systems

This guide covers cable ladder systems, cable tray systems, channel support systems and associated supports intended for the support and accommodation of cables and possibly other electrical





The New LINIAN Cable Tray Clip

Wiring regulations compliance: The LINIAN Cable Tray Clip is fully compliant with the 18th Edition Wiring Regulations (BS 7671:2018), meaning it's

Contact Us

For datasheets, pricing, or custom telecom energy solutions, please visit:
<https://www.koskolong.co.za>