



Adam Tas Corridor Energy

Relay protection steel cable tray explosion-proof type





Relay protection steel cable tray explosion-proof type



Cable and pipe seals for hazardous locations

Roxtec Ex cable transit devices are certified according to the ATEX directive and the IECEx, International Certification Scheme, for use in potentially explosive

Fire Rated Cable Tray, Heavy-Duty Cable Tray Manufacturer

Fire Rated Cable Trays that are crafted from premium materials like stainless steel, galvanized steel, tempered glass, and fire-resistant polyester fiberglass. Each tray is coated with a specialized fire



Terminal and Junction Boxes (Ex e, Ex i, Ex op) , Explosion Protection

Each of these sturdy splice boxes can hold up to 8 splices with up to 12 fusion-type splices per tray. The splice trays are in accordance with DIN 47662 and other telecommunication standards and can be

Cable Trays in Specific Industries: Petrochem & Nuclear

Explore special Cable Trays in Specific Industries like Petrochemical & Nuclear Power. Learn how



they handle corrosion, fire, radiation, seismic risks,



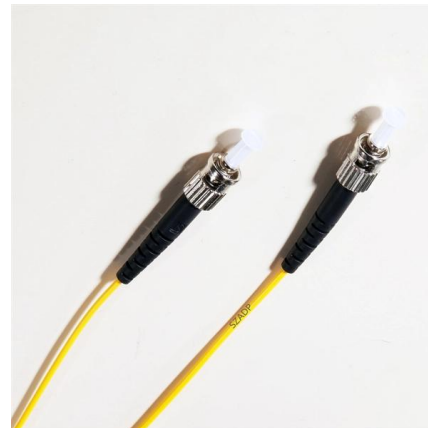
Electrical Cable Tray Fire Protection

One of the most significant fire protection requirements for processing facilities and offshore locations is the need to protect control cables and control



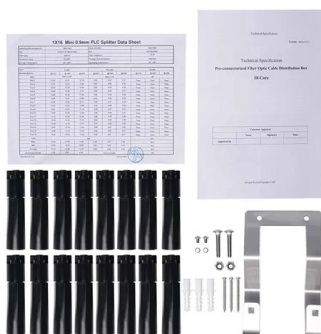
Cable Tray , EAE Electric , Medium & heavy duty cable

Explore EAE Electric's medium and heavy-duty cable tray systems designed for optimal cable management and durability in industrial and commercial applications.



Cable Trays In Hazardous (Classified) Locations , Cable Tray Institute

This cable can be installed in cable trays in Division 1 locations and can also provide fire protection. Cable tray systems must comply with article 318 with respect to ampacity, grounding, fill, spacing and





Reliable and safe relays for hazardous areas

They can be used as relays, impulse relays, relay modules or time relays. All relays have a corrosion-resistant enclosure and easily accessible connection terminals

Rear of the optical fiber distribution box

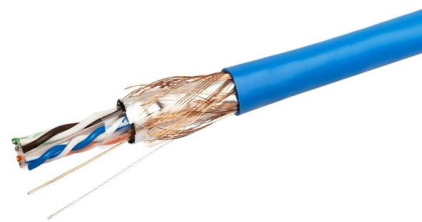


Explosion Proof Electrical Equipment, ATEX Lighting , Supermec

We are an industry leader and a manufacturer of the complete range of ATEX lighting & IECEx compliant explosion-proof electrical equipment for various applications.

Excellent Flame Retardant Explosion-Proof Cable Tray

Product Description Product Description PVC cable trays, as a new generation of cable tray products, have emerged in the field of modern building electrical



FIRE RESISTANT PROOF CABLE TRAY, DIN STANDARD E90

Cablofil Cable Basket - Fire Resistant Cable Tray for FP (Fire Proof) Cables Cablofil cable tray is the preferred choice for the cable containment of low and high voltage electric cables where fire



Cables and Lines for Hazardous Areas

The purpose of this brochure is to help them in the selection of suitable cables and cable entry components, as well as the combination of them which is very important because properties of



The 'Ex d' type of protection: electrical cable installation

The 'Ex d' type of protection: electrical cable installation In areas at risk of explosive atmospheres, systems with electrical cable installations are nowadays a valid

Anti-corrosive Cable Trays Selection: A Comprehensive

Learn how to choose the best anti-corrosive cable trays for your electrical system. Discover the ideal materials for mild, moderate, and severe





How Does Fire Protection for Cable Trays Contribute to

Learn how fire protection for cable trays enhances industrial safety by preventing fire hazards in critical areas and protecting infrastructure.

Hebei Yanwu Explosion-Proof Electrical Co., Ltd.-Explosion-proof

Hebei Yanwu Explosion-Proof Electrical Co., Ltd., Explosion-proof electrical appliances, Cable tray, Hebei Yanwu Explosion-proof Electrical Appliance Co., Ltd. covers an area of 120 acres. It is a professional



GUIDE CABLE TRAYS TECHNICAL

If it has excellent electrical continuity and is integrated in the installation's equipotential bonding system, a metal cable tray reduces the coupling's impact and thus contributes to good EMC of the electrical



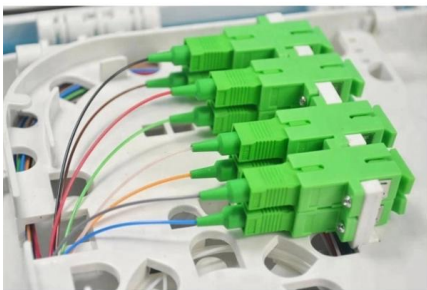
Explosion protective components & systems , Products , ABB

From its global facilities ABB manufactures a wide range of ATEX, IECEx, UL, CSA approved electrical products for hazardous area applications. These include cable glands and lighting ranges.



Reliable and safe relays for hazardous areas

R. STAHL's relays are installed in enclosures with Ex e type of protection and can be used for many different applications. They can be used as relays, impulse relays,



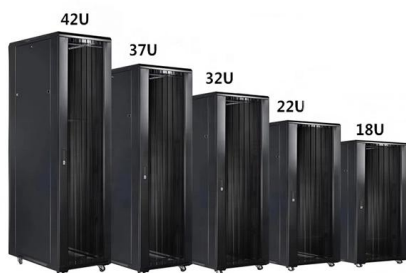
Prevent Fire and Electric Hazards When Cable Trays Used

If not designed and installed properly, wiring inside cable trays may pose hazards such as fire, electric shock, and arc-flash blast events.



Cable Tray SHIB NAL

Cable trays are not raceways, but they are treated as a structural component of a facility's electrical system. Cable trays are a part of a planned cable management system to support, route, protect and





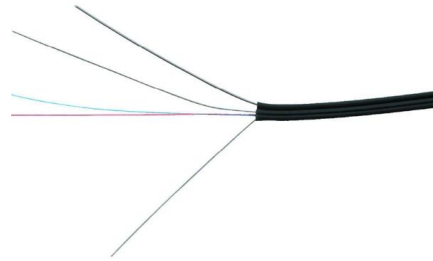
Safety relay modules for areas with risk of explosion

The new generation of safety relay modules of the SRB EXi series combines tried and trusted safety technology with the requirements of explosion protection. The SRB EXi modules were developed



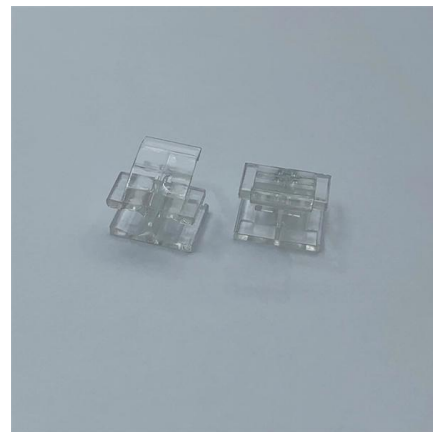
Relays for use in hazardous locations

In order to protect against explosion, all equipment that could be exposed to the flammable or combustible atmospheres in hazardous (classified) locations must be of a type suitable for



Benarx Epoxy Cable Tray for passive fire protection

Benarx Epoxy Cable Tray protects critical power and signal cables in case of fire, maintaining their integrity and functionality. The products is known for its



Explosion-Proof Stainless Steel Cable Tray for Hazardous Industrial

Manufactured from high-grade 304 or 316 stainless steel, these trays are designed to support and protect power, data, and telecommunication cables in the most demanding environments, ensuring



Cables and cable glands for hazardous locations

Cable glands (cable entry devices) used in hazardous locations are intended to provide the safe connection of suitable cables to enclosures, maintaining the explosion protection and ingress



GUIDE CABLE TRAYS TECHNICAL

In accordance with its continuous improvement policy, Legrand reserves the right to change the specifications and illustrations without notice. All illustrations, descriptions and technical information

Aluminum Trays Applications: Hazardous Industrial Areas

Buying Tips: Choose anodized aluminum trays--extra corrosion protection. Derate cable capacity by 15-30% for thermal management, as aluminum dissipates heat differently than steel.





Contact Us

For datasheets, pricing, or custom telecom energy solutions, please visit:
<https://www.koskolong.co.za>