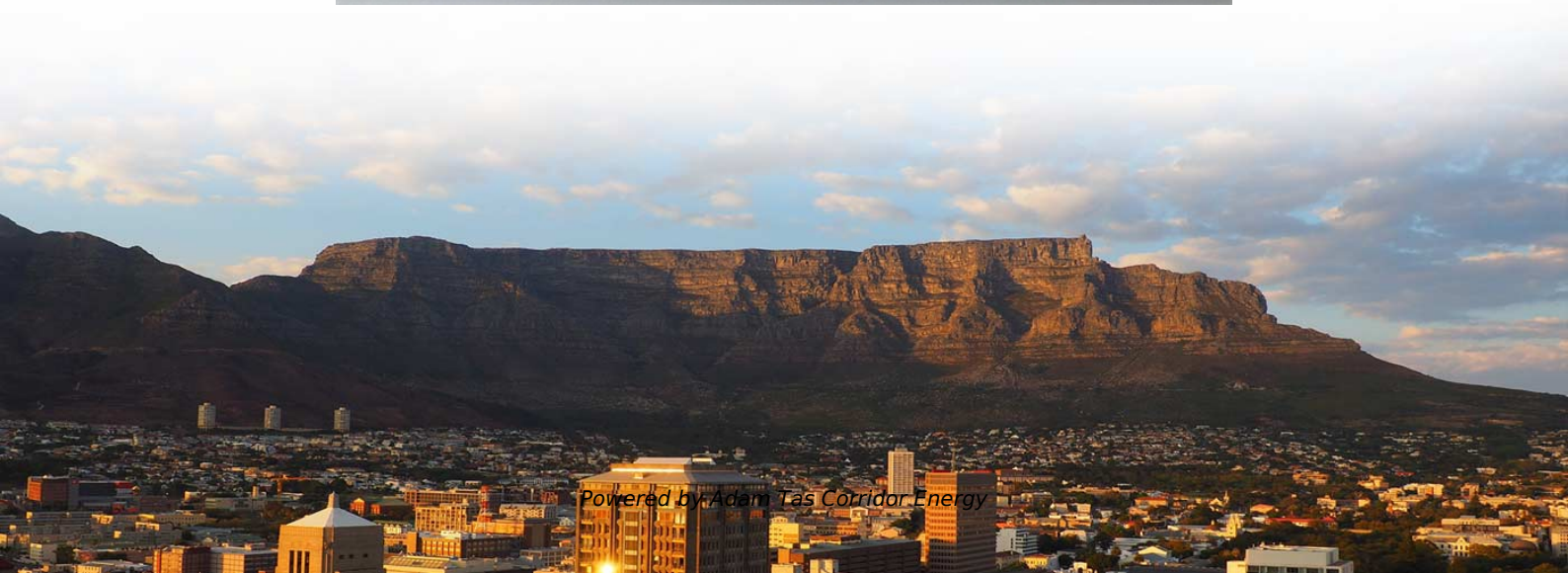




Adam Tas Corridor Energy

Remote power supply 220V for smart cities





Remote power supply 220V for smart cities



AC 220V DC 12V WIFI Relay Switch , ESP-12F Remote

Effortlessly control your smart home devices with the AC 220V DC 12V WIFI Relay Switch. Featuring ESP-12F technology, it offers convenient remote control

Smart Power Supplies

The devices provide direct access to a large range of highly informative data-sets that help to monitor, analyse and optimise the complete power supply concept of any machinery - from the quality of the



4 Smart Switches for Heavy Duty Loads

4 Smart Switches for Heavy Duty Loads Your average smart switch can only handle somewhere between 10 and 15 amps of electrical current. That's fine for



Smart PDU -- remote power control with short-circuit

Smart PDU remote power management -- the best way to protect connected equipment from



overload, power loss and unauthorized power consumption with



3x (DC 12V 15A 180W power supply transformer switch AC 110V / 220V

Top Rated Hampton Bay 70830 FBA_191 691 Fan Remote - White Lutron Electronics 259144 Wireless Smart Fan Speed Control - White 5 Leviton Phenolic Lampholder Light Sockets



Sustainable Energy Production in Smart Cities

This study investigates a variety of green energy-collecting techniques in relation to edge-based intelligent urban computing's smart



LoRawan outdoor base station



IoT intelligent power box-IoT Intelligent Box

The ONV-IoT9000-DY-DG intelligent power box is an intelligent power control system with high integration, strong functionality, and simple installation. It adopts



HIPKZ Wifi Smart Socket 220V Ac Smart Outlet Works with Alaxa

Buy HIPKZ Wifi Smart Socket 220V Ac Smart Outlet Works with Alaxa Google Home App Remote Control Power Monitor Timing Function at Walmart



Atorch AC 220V Smart WiFi Socket o Remote Energy

This intelligent WiFi socket combines a full-featured digital power

The rising, applications, challenges, and future prospects of energy in

By improving the economy, government, environment, living conditions, healthcare, energy, and mobility, smart city apps make people's lives easier and more comfortable. This paper reviews



Smart energy systems for sustainable smart cities: Current developments

Reliable, efficient and low carbon energy supply is one of the key requirements for next generation smart cities . The close proximity of multiple energy vectors like electric power, heat



AC 220V ESP8266 WiFi Relay Module , Smart Home

Upgrade your smart home with the AC 220V ESP8266 WiFi Relay Module. Enable seamless remote control through the Android phone app, offering



Insights , Siemens

Explore how we're bringing AI to the real world through digital twins, autonomous infrastructure and software-defined automation.

smart 220v power outlets , Newegg

Search Newegg for smart 220v power outlets. Get fast shipping and top-rated customer service.





Best 220V/240V Smart Switches and Plugs in 2026

The best smart switches and plugs for 220V/240V high-load devices in 2026. Control dryers, ACs, water heaters, and EV chargers with Shelly, Sonoff,

Power Supply Requirements for Smart City IoT

Power Supply Requirements for IoT Smart Cities Applications Smart cities rely on microcontrollers supported by sensors to provide a constant stream



Amazon : Wifi Switch 220v

30A High Power WiFi Wireless Smart Switch, DIY Module for Smart Home Automation, ewelink APP Remote Control, Timer, Compatible with Alexa & Google Home 50+ bought in past month Add to cart

Best 220V/240V Smart Switches and Plugs in 2026

What Is High-Load? Are There Any High-Load 240-Volt Smart Plugs available? Approaches to Smart Control High Power Appliances Option 1: High-Load Smart Switch Option 2: Heavy-Duty Contactors + Smart Relay Or Plug Should I Use A Wi-Fi, Zigbee Or Z-Wave Switch/Relay? Typical Load of High-Power Appliances in The



HomeTypes of USA Plug ConnectorsThese smart switches are essentially electrical contactors with smart relays in a protective enclosure, that features a manual override switch, LED indicator, and an antenna for radio signals to get in and out of the case. There are generally three types of switches, Wi-Fi, Zigbee, and Z-Wave. Below are some High-Load Smart Switches to consider aft See more on smarthomeperfected ABB Group

Remote Power Panels - Power distribution (Modular Edge Connected)

ABB's configurable Remote Power Panel (RPP) helps to meet the demands of power-intensive applications, delivering unsurpassed power monitoring and distribution with up to 256 poles in a safe,



Smart Power Socket

Supplier highlights: This supplier mainly exports to the Dominican Republic, Colombia, and Uruguay with high customer satisfaction and achieves an 87.3% positive review rate



Amazon : Wifi Smart Plug 220v

Amazon : wifi smart plug 220v GHome Smart 5G 15A WiFi Smart Plug Compatible with Alexa and Google Home, Outlet Timer Smart Home WiFi Outlet Timer with Remote Control, 5GHz and 2.4GHz

Amazon : 220v Smart Plug

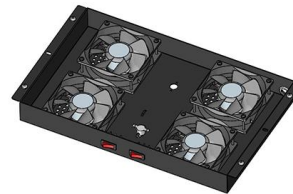


Discover WiFi smart plugs designed for 220V systems. Control appliances remotely via app or voice with Alexa and Google Home compatibility.



ELK-P212S Supervised Remote Power Supply

The ELK-P212S is a Supervised Remote Power Supply / Battery Charger. Most orders receive free shipping.

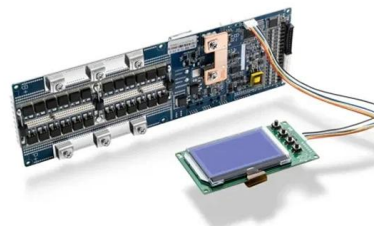


Power Supply Solutions: The Invisible Force That Keeps Smart Cities

MASL delivers engineered power solutions that keep smart cities alive -- no matter the grid, the weather, or the demand. Because in a connected city, real intelligence starts with power that

Intelligent energy grids for smart cities

Intelligent energy grids for smart cities A clever initiative in Japan is reforming the way power is distributed amid rapid growth in decentralized renewable energy





Power Supply Requirements for Smart City IoT Applications

We have specific product series designed for IoT applications, EV charging stations, photovoltaic power grids, and energy battery storage and management systems. Contact us to request a sample or

Best smart switch for 220v applications? : r/homeassistant

Best smart switch for 220v applications? Hope this is an okay question for this sub, seems like you guys know your stuff. So long story short I build remotes for high powered mist pumps (3/4hp motor) using



Amazon : Smart Outlet 220v

Discover smart outlets designed for 220V systems. Control appliances remotely via app or voice commands with Alexa and Google Home compatibility.

Amazon : Smart Plug 220v

Hombli Promotional Pack Smart Socket EU 220-250 V, WLAN Remote Control, Timer, Power Consumption Display, Compatible with Amazon Alexa and Google Home, Remote Control via the



Contact Us

For datasheets, pricing, or custom telecom energy solutions, please visit:
<https://www.koskolong.co.za>