



**Adam Tas Corridor Energy**

# **Repairing after laying cable trays**





## Overview

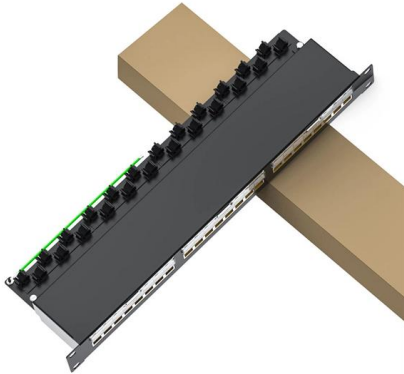
---

If any damage is identified during the inspection, it should be repaired or replaced immediately. Any repairs or replacements should be made using materials that are compatible with the original installation. Mechanical failures often arise when cable trays are not installed following manufacturer specifications or engineering standards. A wide range of issues including equipment failures, safety events, maintenance dreadful events and extended downtime can result from disorganized or inadequately supported cables.



## Repairing after laying cable trays

---

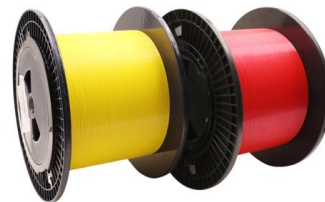


### Inspection and Evaluation of Cable Trays: Best Guidance

Cable trays play a critical role in modern electrical systems. They provide essential support for cables, ensuring safety, efficiency, and system

### How To Install Cables On a Tray

In this video i am going to show you how to install cables on a tray properly. i see many electricians lay cables on a wrong way. cables must lay side by side with a little bit space between (as



### Cable Tray Installation Method Statement

2.Method Statement for Installation of Cable Tray & Cable Laying - Free download as Word Doc (.doc / .docx), PDF File (.pdf), Text File (.txt) or read online for free.

### Cable Tray Failures: Types, Causes, and Prevention

However, like any other infrastructure, cable trays are prone to failures that can result in



serious safety hazards, financial losses, and downtime.



### Common Issues in Steel Cable Tray Installations

Learn how to avoid common mechanical, corrosion, and electrical issues in steel cable tray installations. Get expert troubleshooting tips for better

### Safely Installing, Maintaining and Inspecting Cable Trays

In making cable tray fill determinations, the best strategy is to review and follow the requirements of the NEC and the manufacturer's installation guides to determine the appropriate fill when installing cable



### Microsoft Word

Metallic cable trays shall be permitted to be used as equipment grounding conductors where continuous maintenance and supervision ensure that qualified persons service the installed cable tray system



## Inspection of Cable Trays, Installation Instructions Of Cable Tray

Cable trays can provide a safe structure for a wiring distribution system. If not designed or installed properly, wiring inside cable trays may pose hazards such as fire, electric shock and sudden blast



## Common Cable Tray Failures and How to Resolve Them

This guide discusses common cable tray problems, from loosening and corrosion to grounding issues and installation errors, along with strategies for

## 100+ Essential Questions Answered About Cable Trays:

Discover over 100 expert answers about cable trays, covering key topics like material selection, load capacity, installation methods, and maintenance.



## Cable Tray and Ladder Installation Method

This document provides a method statement for installing cable trays and cable ladders. It outlines responsibilities for the project construction manager,



### Cable Tray Installation Errors And Solutions

Learn how to identify, resolve, and prevent cable tray installation errors. This guide provides actionable tips and insights to ensure efficient

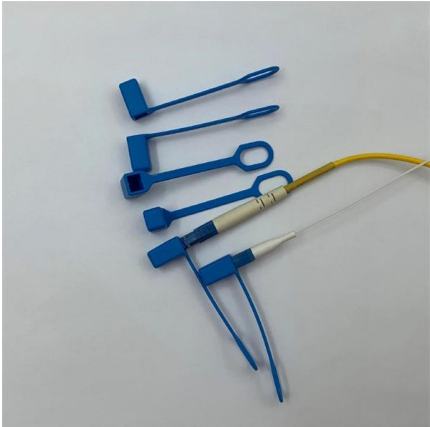


### Best Practices for Installing Cables in Trays

Quick Installation Checklist (Key Steps) Cable tray cable installation generally follows these steps: Inspect cables before

### Laying Cables and Wires: A Comprehensive Guide

Learn about the process of laying cables and wires for power and data transmission, including installation methods, cable types, and the importance of





## Avoiding Mistakes in Cable Tray Installation

While installing these trays in an industrial, commercial area or infrastructure project, it is necessary to avoid common mistakes for better

## Best practice guide to cable ladder and cable tray

Cable ladder and cable tray systems The following recommendations are intended to be a practical guide to ensure the safe and proper installation of



## Avoiding Mistakes in Cable Tray Installation

Avoid common cable tray installation mistakes to ensure safe, compliant, and efficient electrical infrastructure.



## Beama Best Practice Guide , Installation Of The System , Cable

The following recommendations are intended to be a practical guide to ensure the safe and proper installation of cable ladder and cable tray systems and channel support and other support systems.



## How to Safely Repair Industrial Cable Trays and Conduits

Proper maintenance and timely repairs are crucial to ensure safety and operational efficiency. This guide explains how to safely repair these systems, minimizing risks and preventing



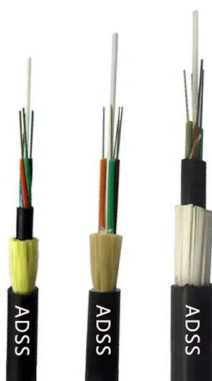
## Cable Tray Maintenance: Tips for Long-lasting Equipment

This comprehensive guide investigates the most frequent wire management challenges faced in real-world setups and demonstrates how the



## How to Avoid Damaging Cables During Cable Tray

Learn expert tips on how to avoid damaging cables during cable tray installation. Our guide covers planning, installation, and maintenance for cable





## Cable tray

In the electrical wiring of buildings, a cable tray system is used to support insulated electrical cables used for power distribution, control, and communication. Cable



## Safety Issues for Cable Tray: Your Guide to Secure

Learn about crucial safety issues for cable trays during installation, repair, and maintenance. Protect your team with essential precautions and best

## Master Cable Tray Installation: A Professional Step-by

Learn how to install cable trays for large-scale projects with our professional, step-by-step guide covering industry standards, safety protocols,



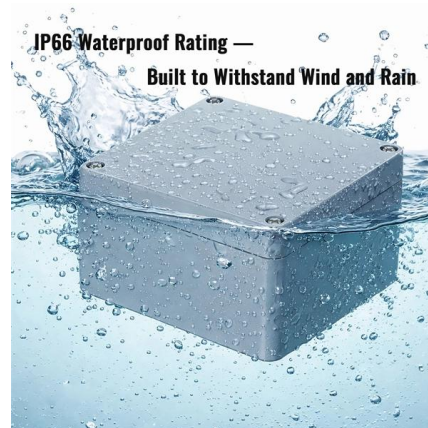
## Unlocking the Secrets to Light Duty Cable Tray Maintenance , CMW

Discover the expert tips and tricks for maintaining order in your electrical infrastructure with our comprehensive guide on light-duty cable tray maintenance. Ensure the longevity and



## Inspection of Cable Trays, Installation Instructions Of Cable Tray

If an existing cable tray, cable ladder or support gets damaged, it may be necessary to make some corrective maintenance. This damage may be represented by, for example, broken welds, bent



## Common Issues in Steel Cable Tray Installations

For engineers, contractors and facility managers, understanding common problems in steel cable tray installations - and knowing how to avoid

## Method Statement installation of Cable Trays and Ladders

This method statement covers the site installation of the cable tray & ladders and the requirements of checks to be carried out.



## Contact Us

For datasheets, pricing, or custom telecom energy solutions, please visit:  
<https://www.koskolong.co.za>