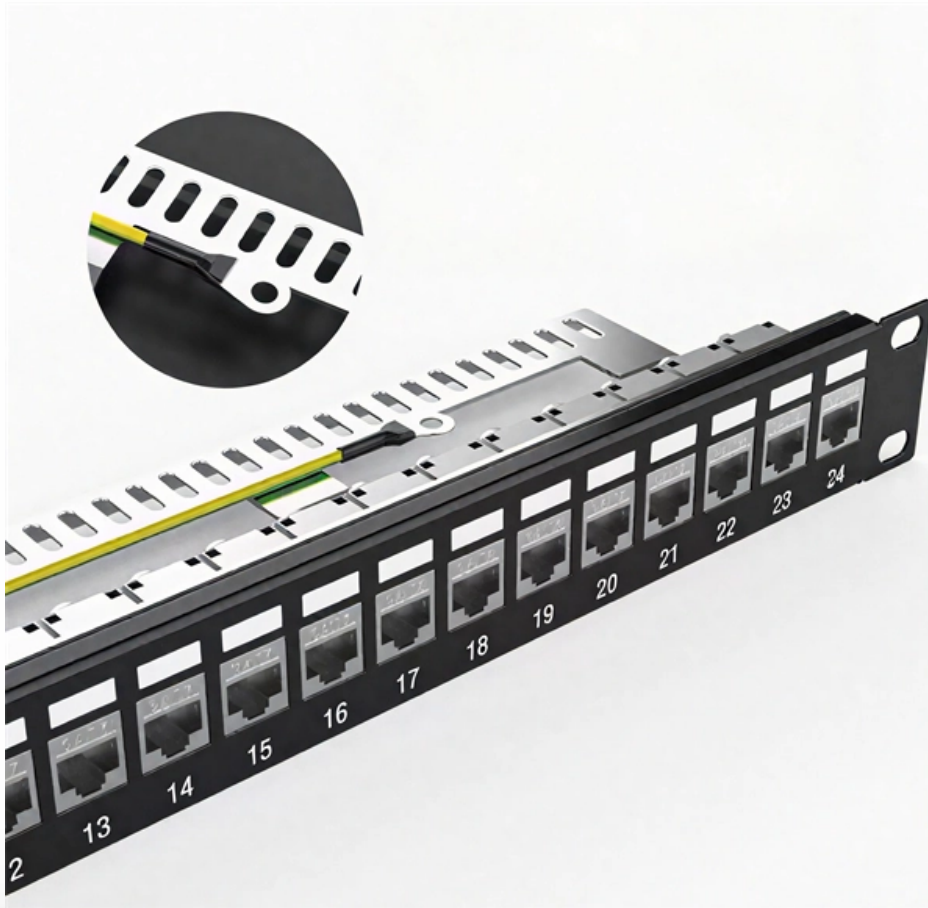




**Adam Tas Corridor Energy**

# **Requirements for Ambient Lighting Installation in Network Cabinets**





## Requirements for Ambient Lighting Installation in Network Cabinets

---

### Data Center Lighting Requirements - LedsUniverse



The design of such systems involves careful attention to various aspects including illumination intensity, uniform light distribution, power consumption, light hue,

### Guidelines To Residential Room Lighting

Guidelines to residential room lighting generally recommend illumination levels for family, dining, kitchen, bathroom, bedroom, laundry rooms



### TECHNICAL SPECIFICATIONS FOR CONTINUOUS AMBIENT AIR

1.1 Housing/Container for Continuous Ambient Air Quality Monitoring (CAAQM) Station including sampling system, internal fittings, instrument racks, electrical and gas line fittings, tools (electrical &

### EB-ThermalEdge-ThermalManagement-Revised-02.10.16

Telcordia specifications GR-487 and GR-3108:  
The telecom industry has a long history of



outdoor plant cabinets and has developed detailed specifications such as the Telcordia Requirements for



### **Network cabinet design considerations**

With installations in existing buildings, there may be building shortcomings (no raised floor, low ceiling, concrete pillars in the room, etc.) that can influence the

### **Data Center Lighting Design Considerations , DataSpan**

When considering data center lighting, you have to ensure the lighting design is bright, adaptable, energy-efficient and dependable. Learn more!



### **From Metro Platforms to Outdoor Bus Stops: How to Select the Right**

In environments with relatively stable ambient lighting such as metro platforms and station halls, excessively high brightness is not necessary. Compared to simply pursuing higher brightness,



## Installation layout and requirements of equipment inside the server cabinet

Installation layout and requirements of equipment inside the server cabinet, Gometal is China manufacturer & supplier who mainly produces network cabinet, network rack, Server cabinet,

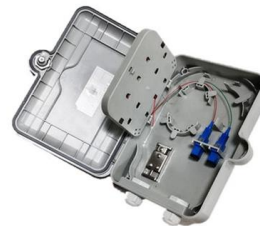


## Guide to ETC Network Requirements

This document expands on information described in the ETC Network Requirements document, which outlines minimum network requirements for ETC lighting control systems.

## Cabinet Lighting 101: Types, Installation, and Benefits

Cabinet lighting is an often-overlooked element that can dramatically enhance the functionality and ambiance of various spaces in your home. From



## Technical Requirements for Cabinets

Anstorm: Technical Requirements for Cabinets  
This comprehensive design ensures Anstorm cabinets meet rigorous industry and environmental



## Networked Lighting Control System Technical Requirements

32 for the purposes of these requirements as the combination of sensors, network interfaces, and controllers 33 that effect lighting changes in luminaires, retrofit kits or lamps. Luminaires, retrofit kits



## Hardware Installation Guide for Cisco NCS 5000 Series Routers

This appendix provides the requirements for cabinet and rack installation for the Cisco NCS 5000 router and includes the following sections: If you are selecting an enclosed cabinet, we

## Illuminating Efficiency: Understanding Data Centre

In this article, we will delve into the significance of data center lighting requirements, exploring their impact on operations, energy consumption, and





## Ambient Lighting Guide

This training guide aims to provide an overview of ambient lighting, considerations for its implementation, and specific examples of its application in different rooms.

## Network Cabinet: Complete Guide for the Best Choice

With these recommendations, you will be prepared to choose a network cabinet that meets your needs and ensures an efficient and safe

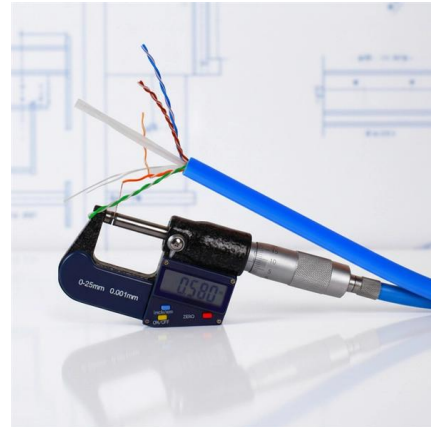


## Data Center Lighting Design Considerations , DataSpan

Your lights must line up with the aisles between the rows of equipment to prevent the cabinets and racks from casting shadows where IT

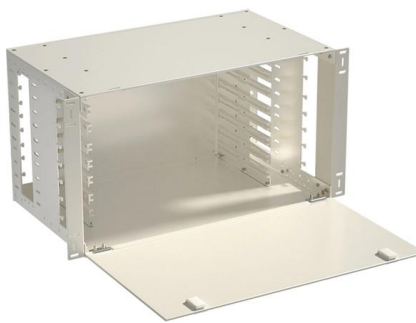
## Ambient Lighting: The Definitive Guide

This blog will give you a complete guide about ambient lighting, including its benefits, where and how to use it, and various aspects of ambient



## NX\_IECC\_Code\_Guide

enterprises of any size. NX Lighting Controls' product suite includes distributed and centralized, wired and wireless systems, luminaire integrated sensors, color tuning controls, panels, occupancy



## Ambient Lighting Guide

Plinth lighting: Installing lights at the bottom of base cabinets or kickboards can create an elegant floating effect and add a soft glow to the floor. Under worktop lighting: Placing lights under the kitchen



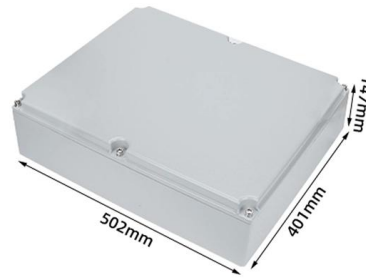
## Why Ambient Lighting Matters in Datacenter Work Environments

According to NFPA 101 standards, exit routes require an average of at least 1 foot-candle (roughly 10.8 lux) with a minimum of 0.1 foot-candle along paths. However, active maintenance areas demand



## Applying Article 645: The NEC and IT rooms

Section 90.3 explains in specific detail how the National Electrical Code should be applied to installations and systems. Let's explore an example of



## Lighting Control Protocols and Standards

Architecture for Control Networks (ACN) is a suite of network protocols designed primarily for theatrical lighting applications where lighting effects are synchronized with audio, video, automation, special

## Are there any specific electrical requirements for under cabinet

Types of Under Cabinet Lighting Before discussing the electrical requirements, it's important to understand the different types of under cabinet lighting available.



## SPECIFICATION 271100 COMMUNICATIONS CABINETS AND

All installation shall be done in conformance with TIA/EIA 569B and BICSI installation guidelines. Failure to follow the appropriate guidelines will require the Contractor to provide, in a



## The Significance of Proper Ventilation in Network Cabinets: A Guide

The Importance of Ventilation in Network Cabinets High-performance network equipment generates a lot of heat, and if it is not adequately ventilated, it can cause overheating, which can cause



## How to Properly Install and Set Up a Network Cabinet

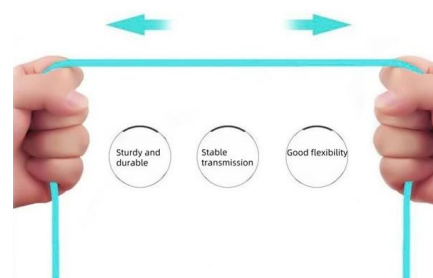
Installing and setting up a network cabinet system correctly is essential for maintaining an efficient and organized network infrastructure. In this

## Site preparation and installation requirements

Airflow requirements outlined in Environmental requirements must be met. The ambient air temperature does not exceed 40° C (104° F) while the switch is operating.

### More durable and robust

The outer layer is made of environmentally friendly PVC, which is soft and elastic. It can be stretched without damage, so you can use it with confidence.





## **Ambient Requirements in a Control Room**

Ambient Requirements in a Control Room  
Inadequate ambient conditions within a control room regarding lighting, air quality, and temperature

## **Contact Us**

---

For datasheets, pricing, or custom telecom energy solutions, please visit:  
<https://www.koskolong.co.za>