



**Adam Tas Corridor Energy**

# **Requirements for Indoor Electrical Distribution Boxes in Residential Buildings**





## Overview

---

The IEC (International Electrotechnical Commission) and BS 7671 (British Standard for Electrical Installations) both provide essential requirements for electrical installations, including those for fuse boards like garage unit, consumer unit and distribution board. Choose the right box based on environment (indoor/outdoor), load capacity, and durability. Ensure safe placement: install in dry, accessible areas with good ventilation and at appropriate height (typically ~1.8m). Different wiring and grounding conventions usually apply in other host nations; however, follow BS 7671:2008 (IET Wiring Regulations Seventeenth Edition), which was published in January and comes into effect on 1 July, will include a new regulation requiring consumer units and similar switchgear assemblies in domestic premises to have a non-combustible enclosure. For residential buildings, the standards DIN VDE 0100-410 (protection against electric shock), DIN VDE 0100-420 (protection against thermal effects) and DIN VDE 0100-530 (protection against fire) apply.



## Requirements for Indoor Electrical Distribution Boxes in Residential

---

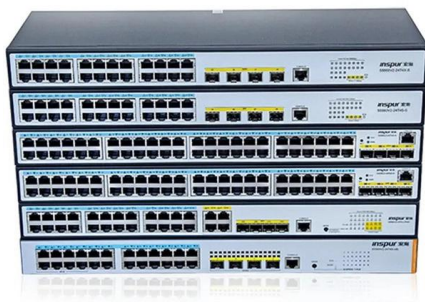


### The Complete Guide to Distribution Box: Installation, Types & More

Different applications require different types of distribution boxes. Selecting the right type ensures optimal performance and compliance with relevant standards. Home distribution boxes

### ELECTRICAL INSTALLATION OF RESIDENTIAL BUILDINGS

These methodological guidelines for practical works have been developed for students of the course "Electrical installation of residential buildings". It is a methodological material containing theoretical



### Design requirements and standards for low voltage

These rules help you meet legal requirements and keep your electrical systems safe and reliable. Each standard covers different aspects, from how you

### IEC / BS 7671 Codes for Consumer Unit and Distribution

The IEC (International Electrotechnical Commission) and BS 7671 (British Standard for



Electrical Installations) both provide essential requirements for electrical



### How to Choose a House Distribution Box , CHINT global

A well-chosen distribution box ensures the safety and efficiency of your household electrical system. This article guides you through selecting a

### Distribution box

A distribution box, also known as a fuse box or power distribution box, is the heart of the domestic electrical installation. It is used to distribute the electricity supplied by the energy supplier to the



### Guide to Residential Electrical Code Requirements

Electrical codes are the bedrock of a secure, reliable, and up-to-date electrical infrastructure in both residential and commercial buildings. Understanding what



## What is an Electrical Distribution Box? A

When it comes to electrical safety, every building -- whether it's a cozy home or a sprawling factory -- needs a secure system to manage and



## New non-combustible enclosure requirement for consumer units

Amendment No. 3 to BS 7671:2008 (IET Wiring Regulations Seventeenth Edition), which was published in January and comes into effect on 1 July, will include a new regulation requiring consumer units

## Understanding Distribution Boxes: Your Guide to Power

What are Distribution Boxes and Their Importance? What are Distribution Boxes and Their Importance? Distribution boxes, or electrical junction



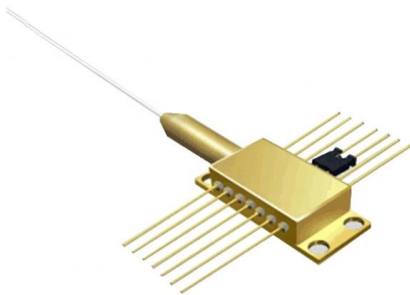
## Design guidelines for substation and power distribution

Design considerations Indoor Substations and Underground Cable power distribution Substation specifications in this guide are based on Indoor



## Understanding NEC Article 314

Understanding NEC Article 314: The Protocol In the world of electrical contracting, the integrity of a system is only as strong as its connection points. Outlet boxes, device boxes, and



## Practical guidelines to electrical installation design of

Power supply in buildings When designing electricity supply to a residential building, design power for both separate groups of the switchgear and

## Distribution Boards

Distribution boards, often referred to as electrical panels or breaker boxes, serve as the nerve center of any electrical system. Here we explore the crucial parts of a distribution board and gain insights into





## Residential electrical installation

Distribution boards (generally only one in residential premises) usually include the meter (s) and in some cases (notably where the supply utilities impose a TT earthing system and/or tariff

## Guidelines for electrical wiring in residential buildings

This document provides guidelines for electrical wiring in residential buildings. It covers topics such as the electricity supply specifications, planning wiring work,



From standard 1U to 8U sizes to fully customized Non-standard enclosures.



## Outdoor Electrical Distribution Box Specifications: NEC

Complete specification guide for outdoor electrical distribution boxes covering NEC Article 312 requirements, NEMA ratings, sizing calculations, and

## Residential Electrical Code Requirements: How Keep

Explore different aspects of residential electrical codes, including requirements, updates, and compliance considerations to keep your residence safe.



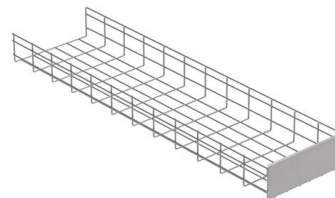
### **Customized Residential Power Distribution Boxes for Community**

Explore how E-abel residential power distribution boxes solve overcurrent risks, electrical leakage, and phase imbalance in modern communities. Learn how customizable low-voltage



### **Installation requirements for distribution boxes**

Distribution boxes shall be made of non-combustible materials; open distribution boards may be installed in production places and offices with low electric shock risk; enclosed cabinets shall



### **The Complete Guide to Distribution Box: Installation, Types & More**

Calculate the total electrical load and add 25% for future growth. Consider physical space requirements and accessibility needs when selecting enclosure size. What's the difference between



## The installation requirements for the distribution box

PDF file

## An Introduction to Interior Electrical Distribution Systems

Use panelboards for service entrance equipment and electrical distribution in residential facilities. Load center style panelboards, /1/ with plug-in breakers, can be used in housing units and residential rooms.



## Requirements And Specifications For Installation Of

The installation requirements and specifications of Distribution box involve many aspects, including site selection, fixing method, wiring specifications

## Distribution Box and Selection Guide

This guide provides information on how to select the appropriate Distribution Box for Electric project. If you have any questions about distribution



## Distribution Box Guide: Types, Components & Solutions

Understand distribution boxes (DB boxes) in 5 minutes. Learn about types, components, functions, and uses. Find the perfect DB box for



your needs.



## Contact Us

---

For datasheets, pricing, or custom telecom energy solutions, please visit:  
<https://www.koskolong.co.za>