



Adam Tas Corridor Energy

Requirements for Optical Cable Survey





Requirements for Optical Cable Survey

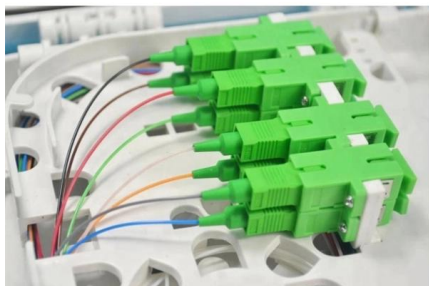


Buried Fibre Optic Cable Survey , 03300 579 730

Buried Fibre Optic Cable Survey With 25 years of experience, Subvision Surveys specializes in buried fibre optic cable surveys. We prioritize safety and provide fast, efficient, and tailored services. Our

Recommended Practices for Optical Fiber Construction

Executive Summary This recommended practices document is a comprehensive manual for optical fiber construction and testing. Sections are included for project



Handbook Optical fibres, cables and systems

The first ITU-T Handbook related to optical fibres, Optical Fibres for Telecommunications, was published in 1984, and several others have been produced over the years. It is an honour to present you with

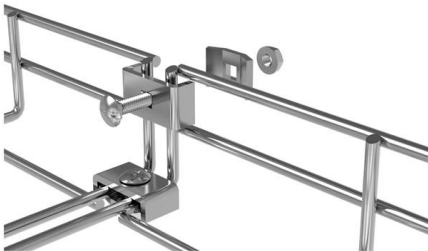
Cable Route Survey

A survey can verify a cable route's suitability, and gather additional details needed to undertake the final route engineering. Learn



ITU-T Rec. L.163 (11/2018) Criteria for optical fibre cable

This Recommendation also describes how to mitigate the considerable risks and/or issues to which the optical fibre cable may be exposed when infrastructures are minimal during installation, maintenance



Cabling Site Surveys

Cabling Site Surveys AmorServ Tech offers comprehensive cabling site surveys to help you assess and plan your installation needs accurately. Whether you're preparing for a new network installation, an



OSP Civil Works Guide-FOA

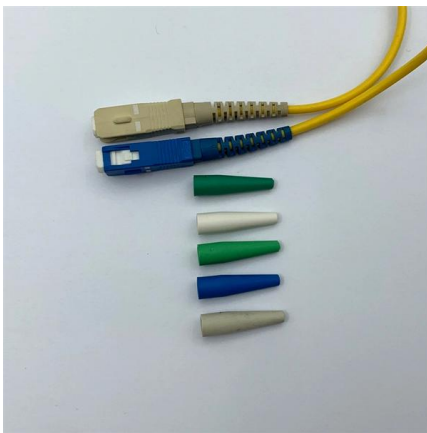
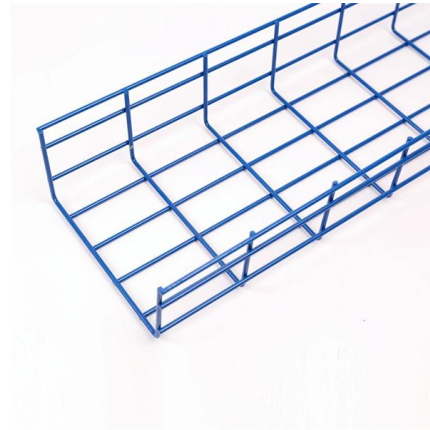
OSP Fiber Optics Civil Works Guide An updated version of this booklet is now available as a textbook on Amazon, is included in the FOA Reference Guide to Outside Plant Fiber Optics and as a section





FOA Standard For Installing Fiber Optic Cable Plants

Fiber optic cables may contain multimode optical fibers, singlemode fibers or a combination of the two, in which case it is generally referred to as a "hybrid" cable.



The FOA Reference For Fiber Optics

Topic: Project Paperwork Table of Contents: The FOA Reference Guide To Fiber Optics Fiber Optic and Premises Cabling Project Paperwork The key to any

Planning, Survey and Design

6. Transmission Equipment Selection: o Choose suitable equipment such as connectors, splicers, enclosures, termination boxes and electronic equipment



Cable & Pipeline Route Surveys

Design and planning are crucial elements in the effective implementation of new submarine cable systems. These rely on the provision of high quality bathymetric



Submarine Cable Surveys - Seaforth Geosurveys Inc

The data would allow decisions to be made concerning the marine installation procedures, the extent of cable armouring required, and burial along proposed



Submarine Cable Route Surveys

During inshore and offshore surveys, a variety of marine data such as hydrographic data, seafloor imaging, sub-bottom profiling and magnetic data are obtained and analyzed. Generally, within 24

Engineering Site Survey for Submarine Optical Cable

There is in-depth discussion of the different depth conditions of the routing section of the survey techniques and methods of application of specific programs. Proposed requirements of the cable





Engineering Site Survey for Submarine Optical Cable

Submarine cable engineering survey is one of the key links in the preliminary work of construction of a submarine optical cable project. At present, there are no agreed upon engineering survey standards

Standard for Installing and Testing Fiber Optics

Documentation of the fiber optic cable plant should follow TIA-606, Administration Standard for the Telecommunications Infrastructure of Commercial Buildings or specific customer requirements.



Master Your Fibre Optic Installation: Step-by-Step Best Practices

This comprehensive guide delves into the intricacies of fiber optic installation, exploring topics ranging from cable types and pre-installation considerations to execution, safety protocols,

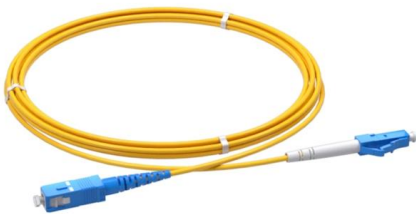
Subsea cable route surveying

Before the survey can start, a comprehensive desktop study is required to address the optimal route, the survey methodology and schedule of work. The primary study comprises the topography and type of



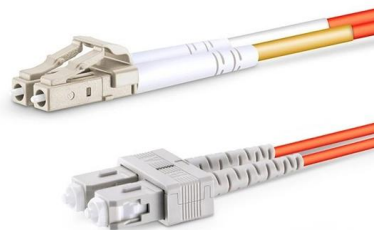
Fiber Optic Cable Install Site Survey Template

While a standard fiber optic cable install site survey template provides an excellent foundation, the true art lies in adapting it to the specific demands of



Submarine Cable Surveys - Seaforth Geosurveys Inc

Submarine Cable Surveys Seaforth has conducted numerous cable route surveys for telecommunications fibre-optic cables, power cables & pipelines, for a variety of



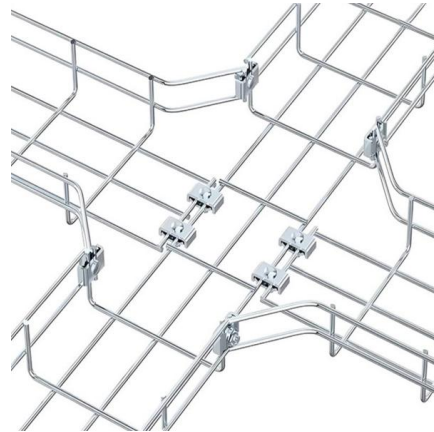
Marine Cable Routing: Subsea Fiber Optic & Power Cables

Incorporating such fishing pattern assessments into desktop studies are critical to identifying marine cable routes for projects. Such assessments also serve as an important factor to a project



23 Optical_Cable_Pre-Construction_Survey

Abstract Pre-construction site survey is one of the most important steps in the engineering and placement of a new optical cable. During this survey the placing supervisor will be able to observe



To define requirements for information gathering about installed

Develop a survey instrument targeting network managers and BICSI members that have detailed measured data about installed cabling, specifically: sites with OTDR certification data bases.

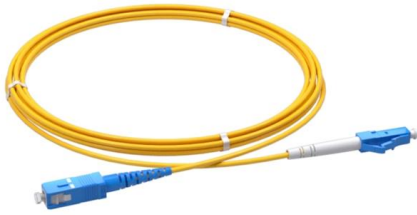
Planning and route survey , PDF

This document discusses planning and surveying for fiber optic network routes. It outlines the importance of performing a preliminary survey to identify the optimal



National Site Surveys , INC Installs

Site surveys isolate numerous variables that you may not be aware of and help minimize surprises during an actual installation. Accurate site surveys can help you determine the feasibility of an



Route Design/Cable Laying Technologies for Optical Submarine Cables

Route Design/Cable Laying Technologies for Optical Submarine Cables which displays the connectivity of the submersible system components such as submarine cables and repeaters. Base

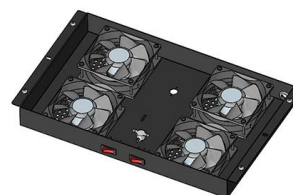


Cable route surveys from a surveyor's perspective

There are approximately 350,000 kilometers of fiber optic cable on the seafloor now and another 300,000 kilometers envisioned in the next few years. From an investors or owner's point of

Fibre Optic Cable Installation Checklist

Mandatory Tools Fibre Optic Cleaver and splicer for precision cutting and joining. Optical Power Meter and OTDR to measure signal strength and detect Fibre Connectors, patch panels, and termination





23 Optical Cable Pre-Construction Survey

One of the most important steps in the engineering and placement of a new optical cable is the pre-construction site survey. During this survey the placing supervisor will be able to observe any

Contact Us

For datasheets, pricing, or custom telecom energy solutions, please visit:
<https://www.koskolong.co.za>