



Adam Tas Corridor Energy

Restart SSH on the fiber optic switch





Restart SSH on the fiber optic switch



Quick start guide

Controlling the switch via RS422/485:
Fibersystem AB is an inventive Swedish company who since 1982 has been working with the application of fiber optic technology in the delivery of solutions fulfilling the

Issues with fiber connected 9300Ls following a reboot.

The issue is that if you power up the 9300L switches connected together and they start talking before their startup configs hit, it puts their



S5860-20SQ Switch Reset and Recovery System Configuration Guide

1.3.1 U-boot Save Configuration and Reset Password Log in to the CLI interface of the switch, connect the console port of the switch with a console cable, open the hyper terminal CRT, and set related

Solved: What would cause all fiber optic ports on a

Hi. On a big industrial plant we've replaced an old HP switch with a brand new couple of C2960x



switches in stack configuration and ever since then,



CISCO UCS - Rebooting Fabric Interconnect (s) - DavidRing.ie

Begin by connecting to the cluster IP over SSH and checking which FI is Primary/Subordinate: FI-A# show cluster state A: UP, PRIMARY B: UP, SUBORDINATE Note: show



Software Manual

This section describes the Web console interface for a series Industrial Management Switches. This is a user-friendly design with advanced management features that allows you to manage switches



6254-SSH LC Duplex 4-Channel A/B Fiber Optic Switch

6254-SSH is a 4 Channel LC Duplex A/B Fiber Optic Switch with SSH and HTTPS GUI Remote Control designed for secure remote and local control of fiber



Configuring Incoming SSH Authentication

Test the setup by logging in to the switch from a remote device. The permissions of the remote file will be reflected in Fabric OS.



Quick start guide Fibersystem Fiber Optical Switches Fibersystem AB

Step 2: Go to your web browser and go to: 192.168.1.1 Fibersystems Fiber Optical Switches has below settings as default: : 192.168.1.1
Netmask: 255.255.255.0 De The settings can be changed after login.



How to Reset a Router Remotely

Internet issues or problems connecting to your network may require you to reset your router remotely. There are several ways you can do this.





Fortswitch not working over fiber : r/fortinet

Folks are on target - In general check/clean the fiber, optics and connectors, and verify they have not been compromised in any way. Also use a proper cleaning tool when cleaning fiber ends and optics.

Troubleshooting Fibre Channel switch onboarding issues

Use the following guidelines and suggested steps to help resolve Fibre Channel switch onboarding issues.

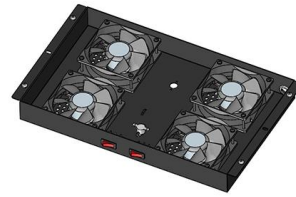


Fiber port of switch does NOT working

and Sonicwall NSA5600 Firewall and switch are connected by fiber optic cable multimode fiber SFP "GLC-SX-MMD" on both side. Sonicwall port coming up but cisco switch port

Configure SSH on Routers

This document describes how to configure and debug Secure Shell (SSH) on Cisco routers or switches that run Cisco IOS® Software.



S5800 Series Basic Configuration , FS

SSH supports the Data Encryption Standard (DES) encryption algorithm, the Triple DES (3DES) encryption algorithm, and password-based user authentication. The SSH feature has an SSH server



S5860-20SQ Switch Reset and Recovery System Configuration

During the password recovery process, you need to restart the device to complete the operation at the CTRL layer. During the password recovery process, pay attention to rename the file, do not choose



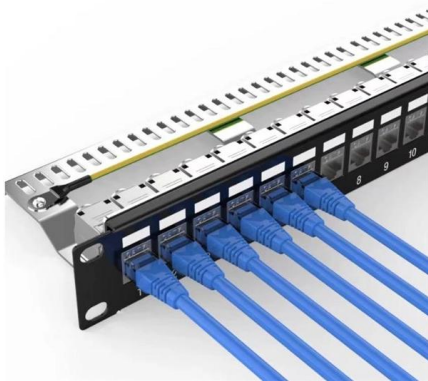
Fiberstore Switch Configuration Guide

Fiberstore Switch Configuration Guide The document provides instructions on configuring system management, user management, FTP, TFTP, Telnet, and



Issues with fiber optic link : r/networking

Issues with fiber optic link Recently, we had issues with power in our building which led to few of our switches losing power and restarting. Configurations were saved and they booted correctly, but a

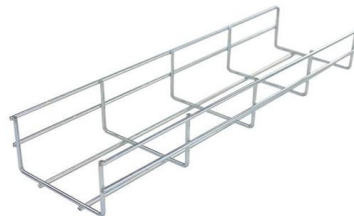


How to successfully restart a network without reboot over SSH?

Do you really want to restart networking or just restart an interface such as eth0? In any case, it will probably break the ssh connection.

How to check fiber cable in cisco switch?

Solution: Clean the connectors, replace the cable if damaged, and use an optical power meter to check signal levels. In conclusion, checking fiber optic cables in a



GitHub

Restart a switch via ssh. Contribute to bsteane/cisco-ssh-skill development by creating an account on GitHub.



Fortswitch not working over fiber : r/fortinet

Initial gut reaction is that it could be partial damage to the main fiber line (or excessive dirt/buildup on contact points from the strike) and not FortiSwitch related since the problem persists across multiple



GPON-ONU-34-20BI Configuration Guide

The central office OLT only needs to register the GPON MAC SFP ONU optical module in the way of configuring a common optical modem, and then complete the access switching of the equipment

Fiber Network Troubleshooting - Common Issues & Fixes

Fiber optic networks are celebrated for their speed and reliability, but even the best systems can encounter problems. When issues like signal loss,



Contact Us

For datasheets, pricing, or custom telecom energy solutions, please visit:
<https://www.koskolong.co.za>