



Adam Tas Corridor Energy

Risk of uncovered distribution boxes





Overview

Finding an uncovered junction box in your home is more than just an aesthetic issue; it's a significant safety concern that often indicates underlying problems with your electrical system. These exposed points can lead to serious hazards like electrical shock, fire, and damage to your. Junction boxes without covers are the most common places to find exposed and hazardous wires. Outdoor low-voltage power distribution boxes (hereinafter referred to as "distribution boxes") are low-voltage distribution equipment used in 380/220V power supply systems to receive and distribute electrical energy.



Risk of uncovered distribution boxes

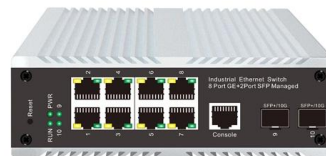


Key Material Requirements for Distribution Box

Learn the key material requirements for distribution box, Discover how the right materials ensure long-lasting performance and safety.

Watch for These Electrical Panel Hazards

Learn about the hazards of electrical panels and how to mitigate risks. Understand the dangers of overloaded circuits, faulty wiring, and other issues.



Uncovered Junction Boxes: Risks, Checks, & Pro Fixes

The risks associated with uncovered junction boxes are not theoretical; they are direct and immediate. These aren't minor code violations that can wait; they are active hazards in your home's

Understanding Distribution Boxes:A Comprehensive Guide

A distribution boxes is an essential device that manages the safe and efficient flow of electrical



power throughout different areas of a building or facility.



Electrical Safety Hazard Caused By Unused Openings

Unused & Uncovered Openings In Electrical Equipment Can Pose An Electrical Safety Hazard. This might happen when a particular piece of equipment



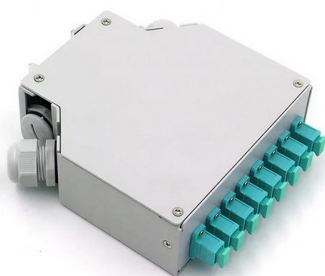
FAQs about An Electrical Junction Box

Uncovered junction boxes pose serious risks and are not in line with electrical safety standards. How Many Junction Boxes Do I Need? The number of



Exposed, Energized Wiring and Electrical Components

Electricians use junction boxes to connect new installations or extend existing installations. When energized junction boxes are uncovered, Figure 1: Potentially hazardous electrical junction box





What Is a Distribution Box?

What to Look for When Choosing a Distribution Box If you're going to buy a distribution box, there are several things you should look for. You should



Consequences of Uncovered Junction Boxes

Down there are possible consequences that can be faced with uncovered junction boxes. Uncovered junction boxes can outspread accidental

Understanding Distribution Boxes: A Comprehensive Guide

A distribution box, also known as a power distribution box or electrical distribution box, is used to distribute electrical power safely to multiple



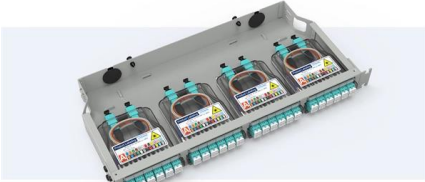
What Is an Electrical Distribution Box? A Complete Guide

What Is an Electrical Distribution Box? An electrical distribution box serves as a centralized unit for distributing electrical power within various structures,



Pre-Terminated Patch Panel

- Multi-application support
- Flexible configuration
- Modular design



Cable Gland Plug
28mm Cable Gland Plug



MPO-LC up to 96 cores
MPO direct connection 48 ports



Mounting Bracket
Semi-open mounting holes

Uncovered Junction Boxes: Risks, Checks, & Pro Fixes

Finding an uncovered junction box in your home is more than just an aesthetic issue; it's a significant safety concern that often indicates underlying problems with your electrical system.



1. An Ultimate Guide for Metal Distribution Boxes

1) Metal Distribution Boxes Constructed from steel, aluminum, or cast iron, metal distribution boxes are highly durable and resistant to mechanical damage. Ideal

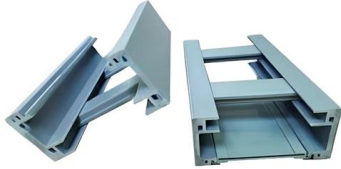
Cautions and Requirements for Installation of

Distribution box is a low-voltage distribution device which assembles switchgear, measuring instruments, protective appliances and auxiliary equipment in a closed





Exposed, Energized Wiring and Electrical Components



Junction Boxes with Missing Covers Junction boxes without covers are the most common places to find exposed and hazardous wires. Electricians use junction

How to Install a Cable Distribution Box Safely and

In modern electrical systems, cable distribution boxes (also known as electrical distribution boxes or distribution boxes) play a crucial role as the key



Problems and Precautions in the Operation of Distribution Boxes

However, for distribution boxes operating under the scorching summer sun, due to direct sunlight, heat reflection from cement ground, and heat generated by the equipment inside, the temperature inside

Common Issues Caused by Uncovered Junction Boxes

Uncovered junction boxes often lead to electrical shocks, posing a significant risk to safety. They can also cause short circuits, increasing the



The Complete Guide to Distribution Box: Installation, Types & More

What's the difference between a distribution box and a sub-panel? A distribution box typically refers to the main electrical panel that receives power from the utility service. A sub-panel is



Can you have exposed wires in an outlet box?

Having exposed wires within an outlet box poses significant safety risks, including electrical shocks, fires, and other hazards. It is crucial to promptly address any



Exposed, Energized Wiring and Electrical Components

Junction boxes without covers are the most common places to find exposed and hazardous wires. Electricians use junction boxes to connect new installations or extend existing installations. When





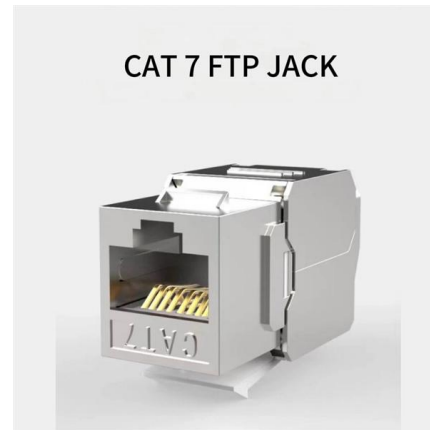
Electrical Installation Risk Assessment

This risk assessment document summarizes the hazards, existing controls, additional controls needed, and residual risk levels associated with the installation



Distribution Boxes Explained: Types, Functions, and

Learn about distribution boxes, their types, functions, and safety features to ensure efficient and secure electrical power distribution in any building.



The installation requirements for the distribution box

A distribution box is the heart of any electrical system. It takes the incoming power and safely distributes it to different circuits throughout your



The Importance of Distribution Boxes in Electrical Systems

Learn more about how distribution boxes play a critical role in the safe and efficient operation of electrical systems.



Problems and Precautions in the Operation of Distribution Boxes

Many distribution boxes are damaged by lightning strikes every year. It is recommended to install zinc oxide surge arresters on all incoming and outgoing line sides of the distribution box.



Safety requirements of distribution box

The distribution box has the characteristics of small size, simple installation, special technical performance, fixed location, unique configuration function, not limited by

Contact Us

For datasheets, pricing, or custom telecom energy solutions, please visit:
<https://www.koskolong.co.za>