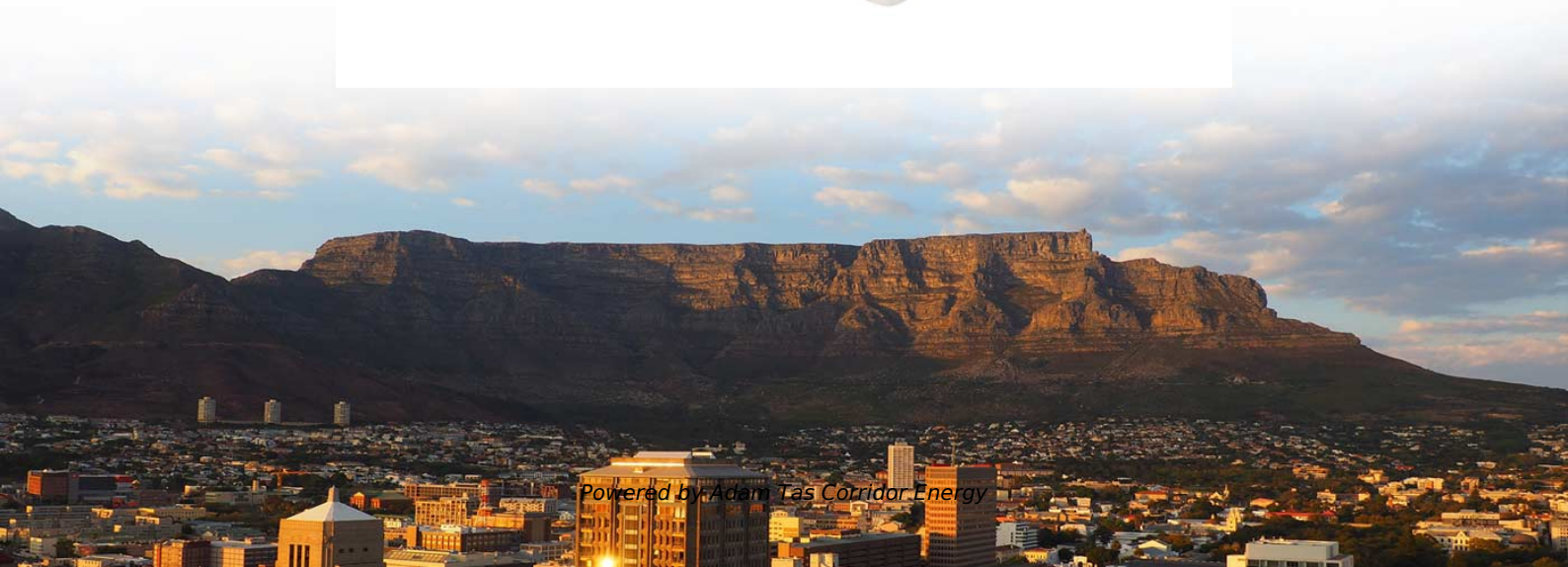




**Adam Tas Corridor Energy**

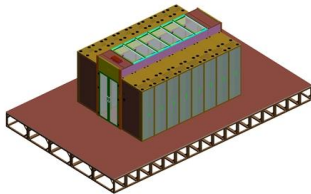
# **Russian dustproof and explosion-proof lighting distribution box**





## Russian dustproof and explosion-proof lighting distribution box

---



### explosion proof light box-Explosion Proof Electric

This series of products have good explosion-proof function, suitable for class II A, II B, temperature group T1-T4 explosive gas environment. It is mainly used in

### Explosion-proof illumination (power) distribution box

Adopting the patented technology of the combined explosion-proof distribution box independently developed by the company, the modularization optimization design and combination of the



### Explosion Proof Lighting Distribution Box

Description An essential electrical component for properly distributing electricity to lighting systems in dangerous areas with explosive gasses, vapors, or



### Explosion-proof illumination (power) distribution box

4. Adopting the patented technology of the combined explosion-proof distribution box



independently developed by the company, the modularization optimization design and combination of the



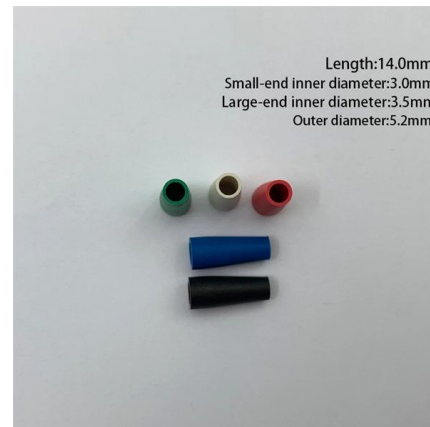
- IP65/IP55 OUTDOOR CABINET
- IP54/55
- OUTDOOR ENERGY STORAGE CABINET
- OUTDOOR BATTERY CABINET

## Explosion-proof power (lighting) distribution box

When sparks or explosions occur due to equipment malfunctions inside the box, the box can withstand the pressure and cool the flames, preventing energy leakage;

## Lighting Distribution Box

Lighting Distribution Box We manufacture high-quality lighting distribution boxes for residential and commercial applications. Our boxes feature a modular design with 4-24 positions, supporting 220V



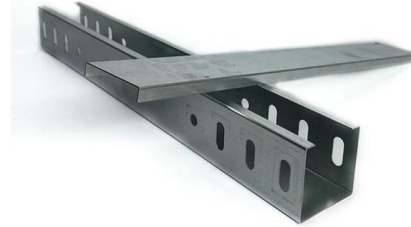
## Explosion-proof lighting fixtures, zone 1

Designed to illuminate the premises of industrial enterprises, open industrial sites, outdoor installations and other places where the presence of explosive atmospheres is possible with the classification of



## **BXM8050 Explosion proof and anticorrosive lighting**

This series of products have good explosion-proof function, suitable for IIA, IIB, IIC explosive gas environment and various flammable and explosive sites, mainly



## **Ex-Proof & Flameproof Enclosures & Junction Box , Supermec**

All explosion-proof enclosures, lighting or power distribution boxes are manufactured using the latest technologies, both mechanical and electrical, using materials able to resist in most highly corrosive

## **Explosion-proof lighting: Safety at R. STAHL**

R. STAHL has extensive expertise in lighting design, explosion-proof light fittings and LED technology for hazardous areas and harsh environments. This makes us a well-qualified, flexible partner for



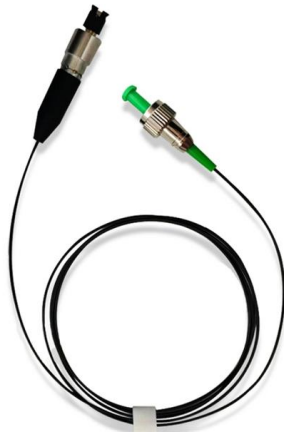
## **BXM (D, X)**

Switch box uses explosion-proof structure, wiring box and junction box use increased safety explosion-proof structure, reliable explosion-proof performance, easy installation and maintenance; Explosion



### **Explosion proof Power Distribution Panel Box**

Power Distribution panel box - Hazardous locations for explosive gas mixtures: Zone 1 and Zone 2. Explosive gas mixtures: Class IIA, IIB, and IIC.



### **Explosion proof Lighting Power Distribution Box**

Explosion proof Lighting Power Distribution Box, products shock-resistant and durable, energy-saving and environmentally friendly, models and styles are

### **Helex Llc , Nanotechnology Company , NPD**

The range of HELEX products can solve any problem in the field of safety of production processes of enterprises and includes explosion-proof terminal and junction boxes, control stations, starters and





## Lighting Distribution Box in Qatar , Light Distribution

Explosion Proof Lighting Distribution Box, designed to withstand the harsh conditions of Qatar. Ideal for hazardous environments.

## Explosion proof distribution box standards and installation issues

Explosion-proof distribution boxes are mainly used in coal mines, fire stations, petroleum, petrochemical installations and textile and other flammable and explosive places. These places are more prone to



## BXM (D)8050 Explosion proof Distribution Boxes

Warom Explosion proof Distribution Boxes. Modular GRP construction fitted with a variety of optional components..

## Explosion-Proof Lights, Explosion- Proof Junction Box, Explosion-Proof

Our expertise covers a wide array of items, including explosion-proof electrical appliances, lighting fixtures, fittings, fans, as well as products that are anti-corrosion, dust-proof, and waterproof.



### 30 Watt Explosion Proof Jelly Jar LED Light , 3900

LED explosion proof fixture used in hazardous location lighting and oil and gas facility lighting. Includes 30W delivering 3900 lumens at 5000K with 100-277V operation.



### HRMD91 Explosion proof Distribution Box (Ex d IIB+H2)

HRMD91 Explosion proof Distribution Box  
Explosion protection to - IEC - CENELEC - NEC  
Can be used in Zone 1 and Zone 2 Zone 21 and Zone 22 Class I, Zone 1



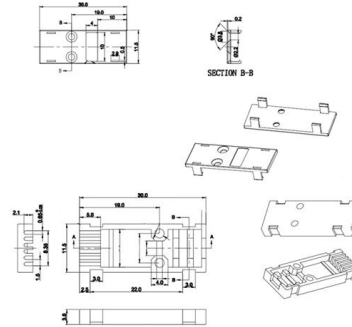
### explosion proof light box-Explosion Proof Electric

BXM (D) Explosion proof Lighting ( Power )  
Distribution Box This series of products have good explosion-proof function, suitable for class II A, II B, temperature group



## Songbei Explosion-proof Anti-Corrosion Lighting Power Distribution

Buy the Songbei Explosion-proof Anti-Corrosion Lighting Power Distribution Box BXM(D)8050-8K for reliable electrical power distribution in hazardous environments. Explosion-proof, weather-resistant,

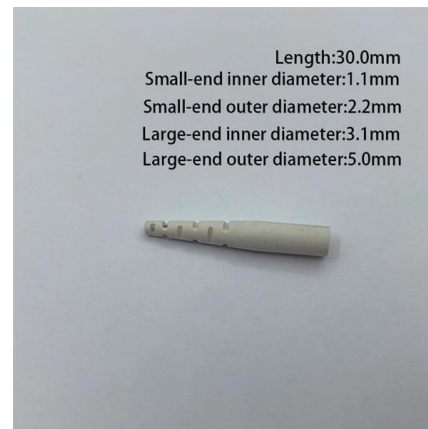


## Explosion-Proof Electrical Distribution Boxes: Applications in

An explosion-proof distribution box is a specialized enclosure designed to contain internal explosions and prevent the escape of flames, sparks, or hot gases. It is essential to note that these boxes are

## Understanding Explosion Proof Lighting Distribution Box: Standards

Specifically, explosion-proof light distribution boxes are engineered to prevent internal sparks or arcs from igniting flammable gases, vapors, or dust in volatile areas. These boxes are constructed with



## Explosion-Proof Distribution Boxes & Panels Manufacturer

The explosion-proof distribution box safely delivers power in hazardous zones (oil, gas, chemical plants) with rugged, spark-resistant casing--ATEX/IECEX, IP66 certified for reliable operation in explosive



## Power Distribution Systems , Explosion Protected , R. STAHL

Evolution in Power Distribution For decades, the only explosion protection technology available in North America was the cast metal enclosure systems designed for Class I, Division 1 environments, also

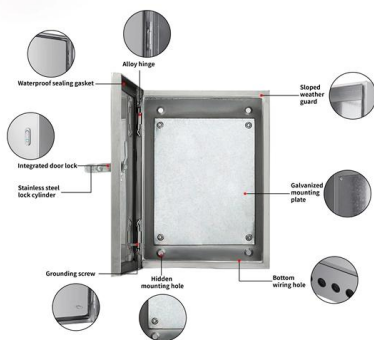


## Explosion-proof and anti-corrosion power (lighting) distribution box

Executive standards: GB 3836.1, GB 3836.2, GB 3836.3, GB12476.1, GB12476.5, IEC60079-0, IEC60079-1, IEC60079-7 Explosion-proof mark: Ex de IIC T4/T5/T6 Gb/Ex tD A21 IP66 T130°C

## Custom CZ1290 Explosion-proof distribution boxes

Products are widely used in engineering projects such as petrochemicals, medical machinery, food processing, precision electronics, military ships, aerospace and



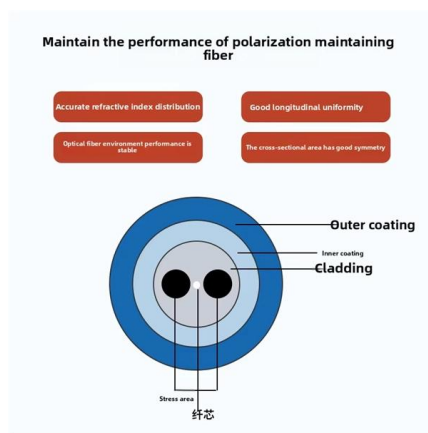
## Explosion Proof Distribution Box, Lighting Power

Wenzhou LichiElectric Co., Ltd, founded in 2007, the existing production area of 15,000square meters, specializing in the production of vacuum circuit breakers,



## Explosion-proof junction boxes

The box consists of a housing and a lid with an explosion-proof flange connection, tightened with captive screws. The lid is attached to the housing with hinges.



## Model and Specification of Explosion-Proof Distribution Box

Explosion-proof lighting distribution boxes and cabinets come in a variety of models. They vary in terms of materials, including metal and flame-retardant plastic; installation methods, such as

## Contact Us

---

For datasheets, pricing, or custom telecom energy solutions, please visit:  
<https://www.koskolong.co.za>