



Adam Tas Corridor Energy

SC-P on the optical attenuator





Overview

An optical attenuator, or fiber optic attenuator, is a device used to reduce the power level of an optical signal, either in free space or in an optical fiber. The basic types of optical attenuators are fixed, step-wise variable, and continuously variable. The power reduction is done by such means as absorption, reflection, diffusion, scattering, deflection, diffraction, and dispersion, etc.



SC-P on the optical attenuator



Fiber Optics Attenuators

Optical attenuator Return loss is the light energy incident on the optical attenuator and the attenuator light energy incident along the road reflecting ratio.

RS PRO SC APC Single Mode 5 dB Attenuator , RS

This RS PRO single-mode 5 dB attenuator reduces optical power launched onto a photodetector. Its precise construction is designed to give attenuation over a wide



Choosing the Right Fiber Optic Attenuator

Helpful buying guide for fiber optic attenuators. Compare fixed and variable options, understand key parameters to consider and learn application

Precision Light Control: Understanding the Essential SC Attenuator in

The SC attenuator may be a small component,

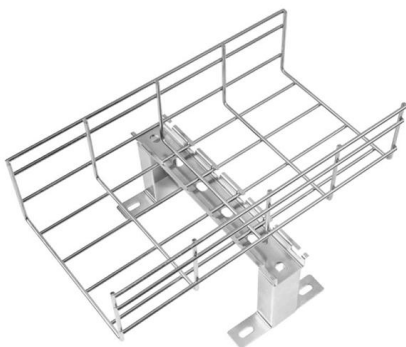


but its role in the health and performance of fiber optic networks is immense. By providing precise control over light signals, it safeguards



SC/APC Fixed Fiber Optic Attenuator

Sinocomms strongly recommends this optical component for Dense Wave Division Multiplexing (DWDM) and Erbium Doped Fiber Amplifier (EDFA) where the receiver cannot accept the signal generated



How to Choose the Correct Fiber Optic Attenuator?

Fiber Optic Connector: Next, you need to consider the type of fiber optic connector you're using. Fiber optic attenuators are available with various



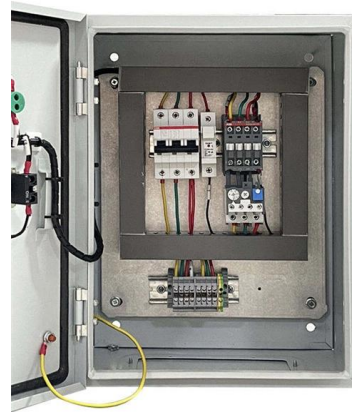
Fiber Optic Attenuators: Wiki, Types, When and How to Use

Learn what fiber optic attenuator is, how it reduces the power level of an optical signal, different types of optical attenuators, and when and how to use them.



SC Fiber Optic Attenuator: Types, Applications, and How to Choose

This article explains what an SC attenuator is, the different types available, where and when to use it, and how to choose the right SC attenuator for your application.



Fiber-optic Attenuators - fixed or variable attenuation, working

PDF file

SC/APC Male-Female Attenuator Datasheet , FS

SC/APC Male-Female Attenuator Datasheet IDEAL FOR DEBUGGING OPTICAL POWER PERFORMANCE & OPTICAL INSTRUMENT CALIBRATION CORRECTION & FIBER SIGNAL

Optic SC/APC Attenuators - Whyte Technologies

They help in troubleshooting optical power performance, and reduce optical signal strength as needed. This ensures that the optical power remains steady and at the desired level without altering the



The Ultimate Guide to Fibre Optic Attenuators

To reduce the power in fibre links, fibre optic attenuators are leveraged. This white paper will shed light on the types, working principles, and applications of fibre optic attenuators, which will



help you gain a



SC Variable Optical Attenuator

Sinocomms' optical fiber attenuators offer multiple options including SC, LC, ST, FC, and MU connector types and definable attenuation values from 1db to 30dB. SC Variable Optical Attenuators from



SC Fiber Optic Attenuator: Types, Applications, and How to Choose

In fiber optic communication systems, optical signal power must be carefully controlled to ensure stable transmission and reliable receiver performance. When signal levels are too

SC/APC Fixed Fiber Optic Attenuator

SC/APC Fixed Fiber Optic Attenuator from Sinocomms provides defined control of optical signals in both integrated and add-on products. Depending on the project or need, fixed fiber optic attenuators can





SC Attenuators

SC Attenuators are commonly used in telecommunications, data centers, and various fiber optic installations to balance optical power, improve signal-to-noise

Understanding Fiber Optical Attenuators: Functions And

Therefore, fiber optical attenuators play a crucial role in optical communication systems. So, what is an fiber optical attenuators? And what is its



SC/APC Plug-in Fixed Fiber Optic Attenuator

SC APC Single Mode Plug-In Fixed Fiber Optic Attenuator - Male to Female, 1-25 dB Our single-mode fixed fiber optic attenuators offer low reflection,

Fiber Optic Attenuator, Fixed

Our SC/APC 5dB fiber optic attenuators come machine polished ideal for performance and low return loss.



Fiber Optic Attenuators , SC, LC, FC & ST Types

HOLIGHT's fiber attenuators reduce optical signal power with precision. Available in SC, LC, FC, ST, fixed and variable types.



SC/APC Male-Female Attenuator Datasheet , FS

SC/APC Singlemode Fixed Fiber Optic Attenuator
As optical passive devices, FS attenuators are mainly used in fiber optic to debug optical power performance & optical instrument calibration correction &



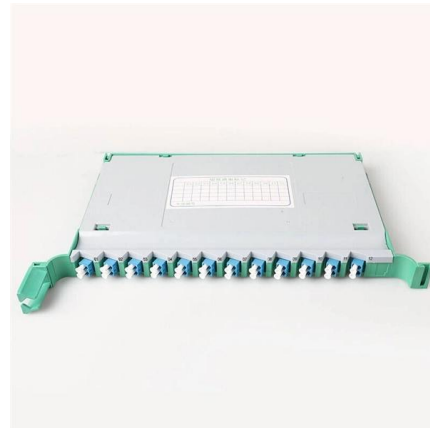
Optical Attenuators: Types, Principles & Calculations

Complete guide to optical attenuators: fixed, stepwise & continuous types. Learn gap-loss, absorptive & reflective principles plus attenuation



SC Fiber Optic Attenuator: Types, Applications, and How to Choose

It is widely used in telecommunications networks, data centers, FTTH systems, and optical testing environments. This article explains what an SC attenuator is, the different types available,



FiberXP 10dB Single Mode SC UPC Attenuator

The FiberXP(TM) premium grade optical fixed attenuator is a Zirconia ferrule, doped attenuation fiber type for single mode applications. This male-to-female SC/UPC



Exploring Optical Attenuator Types and Applications: A

optical attenuators are indispensable components in fiber optic communication systems, offering precise control over signal power levels and



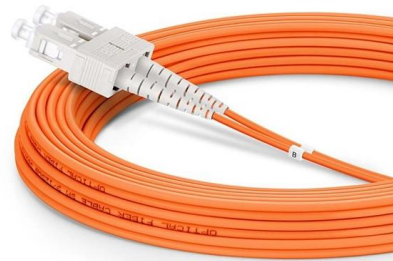
SC Fiber Optic Attenuator, SC Fiber Optic Attenuators

We supply single mode SC fiber optic attenuators, they are available by bulk headed type or plug female to male type. The SC fiber optic attenuators work in the 1250nm to 1625nm range, with attenuation



LC / SC / ST / FC Fixed Optical Attenuators

SC fixed optical attenuators: These are passive devices used to reduce the power level of an optical signal in a controlled manner. They feature an SC (Subscriber Connector or Standard Connector)



Contact Us

For datasheets, pricing, or custom telecom energy solutions, please visit:
<https://www.koskolong.co.za>